

# Anbruch

The Anbruch is a [Ge-Y1-1a - Henkei-class Starship](#) owned by [Tanja Dunst](#) and used by the crew of [The Wayward](#) plot.

## More about Anbruch



## Cabins

There are a total of 12 state rooms on the ship. The 6 on the upper deck are single occupancy and generally used for crew. The 6 on the lower deck are dual capacity and for passengers.

Cabin	Occupants
Cabin A-1	<a href="#">Tanja Dunst</a>
Cabin A-2	<a href="#">brigid_piper</a>
Cabin A-3	<a href="#">Adiel Avraham</a>
Cabin A-4	<a href="#">Analiese</a>
Cabin A-5	<a href="#">Saku Hana</a>
Cabin A-6	<a href="#">Ashtoreth "Ash" Demir</a>
Cabin B-1	-&-
Cabin B-2	-&-
Cabin B-3	-&-
Cabin B-4	-&-
Cabin B-5	-&-
Cabin B-6	-&-

# Statistical Data

## General

Class: *Henkei-class* Nomenclature: Ge-Y1-1a Type: Multi-role Designers: [Geshrinari Shipyards](#)  
Manufacturer: [Geshrinari Shipyards](#)

## Capacity limits

Maximum Capacity: There are accommodations for 18 personnel **Emergency Capacity:** 50 people can fit aboard in an emergency, but the ship would be extremely cramped.

## Dimensions

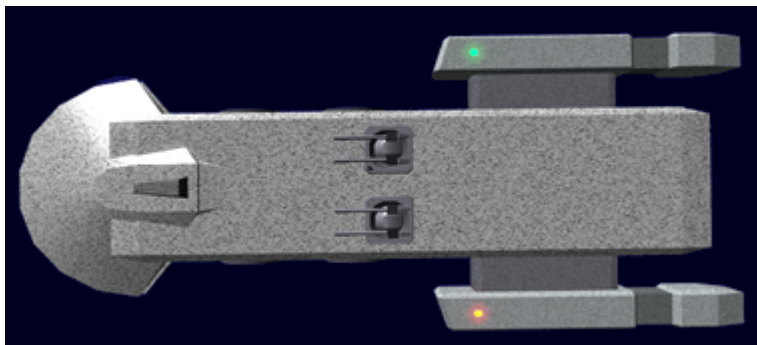
Length: 85 meters (269 feet) Width: 33 meters ( 108 feet) Height: 13 meters (42.64 feet) Decks: 2 (4 meters each)

## Propulsion and Range

### Speeds

- **Atmospheric:** Mach 5
- **Combined Field System/Continuum Distortion Drive:**
  - **Minimum:** Resting motionless
  - **Sublight:** .3c (~89,937 kilometers per second)(~55,884 miles per second)
  - **Maximum Speed:** 12,500c (~1.43 ly/h)
- **Hyperspace Drive:** 394,470c (0.75 ly/m)

## Ship Systems



## Ge-Y1-A3100 - Armored Hull

.5m overlapping [durandium plating](#), [Durandium Alloy](#) frame and [Transparent Durandium](#) windows.

## Shields

[Geshrinari Combined Field System](#)

## Computer and Sensor Systems

### Ge-Y1-E3100 Computer

The *Anbruch* uses a [Geshrinari Shipyards](#) designed computer based on the [Compact Integrated Electronics System \(CIES\)](#), it runs the Kessaku OS.

### Ge-Y1-E3101 Sensors

- Unidirectional Sensors - include variable wide-band imaging clusters, long-range gravimetric and magnetic resonance and distortion sensors and spectrometers. These sensors face the front of the ship and have a range up to five light-years.
- Ultra-Wide Band Radar - This radar system is designed to detect and track objects in close proximity to the ship. System has a range of 1 light second

### Ge-Y1-E3102 Communications

- Radio - Full spectrum, Dual-Modulation, no technical range, limited to light-speed, delays occur at long range.
- Subspace/Hyperspace - A standard means of faster-than-light communication.

### Psionic Signal Controller

[Geshrinari Psionic Signal Controller](#).

## Emergency Systems

- [Geshrinari Blast Shutters](#) - which seal major sections of the ship.
- [Ge-Y1-E3104 - Automatic Fire Suppression System](#).
- Chemical extinguishers - These are present for manual use on electrical and metal fires.
- Ge-XS-3000 Escape pods - the *Anbruch* carries four with capabilities similar to [Star Army Escape](#)

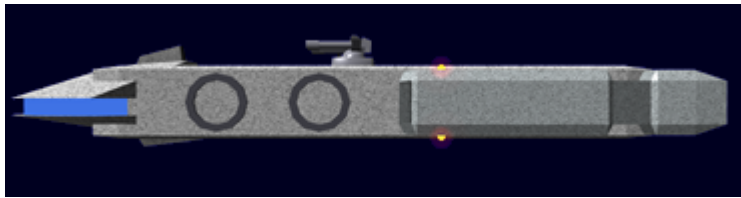
[Pod, Type 29](#). Two of them are on the upper deck on either side of the bridge. The other two are located on the lower deck on either side of the computer room.

## Intercom System

[Ge-Y1-E3103 - Intercom System](#).

## Connection Points

In order to allow proper connection with [modules](#), the *Anbruch* has 4 Ge-Y1-M3104 Module connection points, two on each side. They provide connectivity to of primary systems as well as acting as access points between the main structure and the module.



## Life Support System

[Ge-Y1-V3100 - Life Support System](#)

## Power Systems

### Aether Generator

The *Anbruch* runs on a high output Ge-Y1-G3100 [Aether](#) generator that provides power to primary systems.

### Fusion Reactor

Twin Ge-Y1-G3101 fusion reactors power the weapons systems and if the main generator fails it powers the main systems as well.

## Propulsion

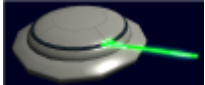
- [Geshrinari Combined Field System](#) for primary propulsion.
- [Geshrinari Hyperspace Fold Drive](#) used for long distance travel.
- two [Geshrinari Continuum Distortion Drives](#) mounted in parallel for STL and atmospheric travel

- [Geshrinari Maneuvering Thrusters](#) clusters are used for docking and delicate maneuvering

## Weapons



- two [Ge-Y1-W3100 - Anti-Ship Turrets SDR:2](#) mounted on the top of the ship



- six [Ge-V1-W3301 - Defensive LASER](#)
  - One [500mm Gauss Impelled Positron Cannon](#)
  - One [Geshrinari Graviton Beam Projector](#)

## Ship Logistics

- [Anbruch Ship Inventory](#)
- [Ship Finances](#)

## OOC Notes

This page was originally created on 2014/10/08 08:18 by [Syaoran](#).

From:

<https://wiki.starmy.com/> - **STAR ARMY**

Permanent link:

<https://wiki.starmy.com/doku.php?id=starships:anbruch>

Last update: **2023/12/20 18:22**

