



Visual Style Guide for the Star Army

This guide helps describe the overall look of the [Star Army of Yamatai](#).

Starships & Vehicles

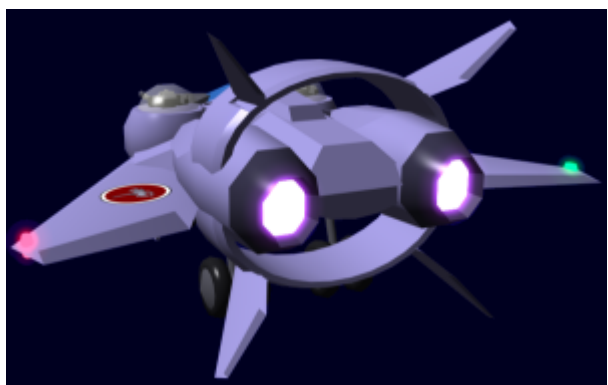
Yamataian military starships tend to be spearpoint shaped and have wings of some sort; their bows usually end in a sharp point or in a double-prong design that is essentially a point with a cutout. They are blue-gray ( [Periwinkle](#) or  [Ceil](#)) or two-toned blue-gray and dark gray in coloration and bear the Star Army of Yamatai's "hinomaru" rondel, a red circle with a white border and a stylized power armor profile in the red; this emblem is typically positioned somewhere near the top center. Many starships use a number of standardized turrets positioned around the hull on circular mounting platforms. Current Yamataian warships typically use glowing teal aether-based engines.

Engines

Typically Star Army ships have glowing teal engines.



Some older ships or craft may have glowing purple engines.

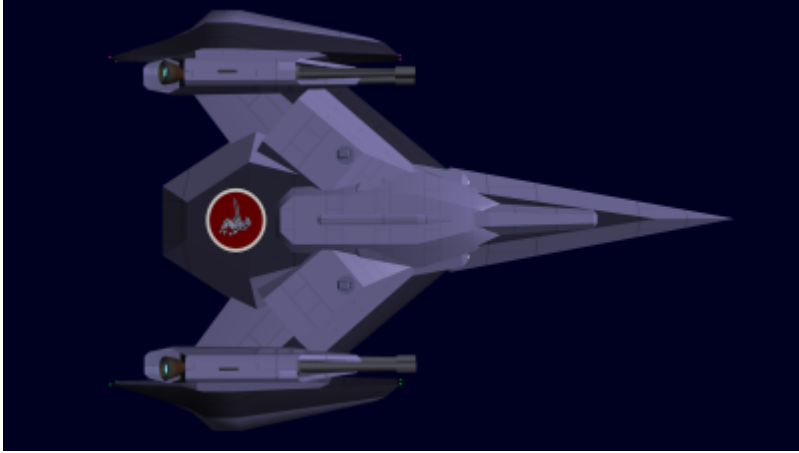


Hull Color

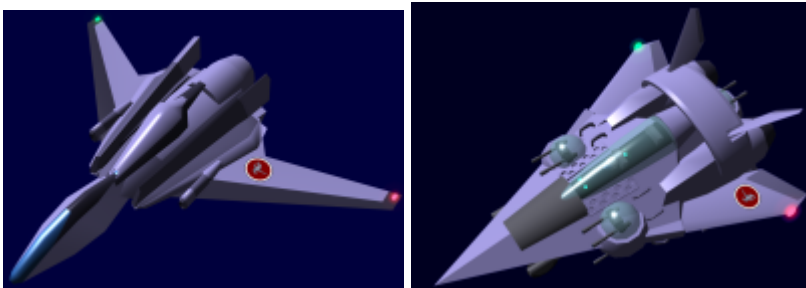
Symbols

The Star Army uses the [Star Army Hinomaru](#) as its primary emblem.

On starships it's typically on the center-line on the top.



On fighters and winged crafted, positioned on the left wing (top/dorsal side):



Uniforms

See: [Star Army Uniforms](#)

See also:

- [Visual Reference Guide for Star Army Uniforms](#)

OOC Notes

This page was originally created on 2024/03/09 05:03 by [Wes](#).

From:

<https://wiki.stararmy.com/> - **STAR ARMY**

Permanent link:

https://wiki.stararmy.com/doku.php?id=stararmy:visual_style_guide

Last update: **2024/03/10 08:47**

