

Type 30 Surface Terrain Vehicle

The Ke-K2-1 series *Type 30 Surface Terrain Vehicle* is a large 4WD ground vehicle designed and manufactured by [Ketsurui Zaibatsu](#) for use by the [Star Army of Yamatai](#) and [UOC Peacekeeper Forces](#). It first entered service in [YE 30](#).



About the Type 30 STV

The *Surface Terrain Vehicle* owes its design lineage to the [Type 30 Light Utility Truck](#) but is significantly larger and capable of handling much more rugged terrain. The open-top truck seats two people; The driver sits on the left side while a passenger may sit on the right. Behind the seats is the cargo bed, where the soldiers can store supplies, equipment, and/or a gunner. The gunner stands in the back and can fire a mounted [Type 30 Machine Gun](#) (Shown in the images above), [Type 35 Automatic Grenade Launcher](#), or other weapon.

STVs utilize a [Durandium Alloy](#) unibody construction and are quite durable. Their windshields are made of [Transparent Durandium](#) and their tires are lined with nearly-impenetrable Yarvex. STVs require no fuel and can run well for extended periods without any maintenance, even in extreme environments such as beaches, jungles, deserts, glaciers, or in space.

Because the STV is designed with armored troops in mind, the STV does not have a roof; however, there is also an enclosed variant, the Ke-K2-2 series [Enclosed Surface Terrain Vehicle](#) available. A [Recovery STV](#), [Utility STV](#) and a 6-wheel [Cargo STV](#) variant also exist.



Mission Specializations

- Troop Transport (planetary)
- Cargo Transport (planetary)

Dimensions

The basic STV has the following measurements:

- 5m (16.4') long
- 3.3m (10.8') wide

- 2.5m (8.2') tall

The STV is twice as long as the [Light Utility Truck](#) or [Type 30 Tankette](#).

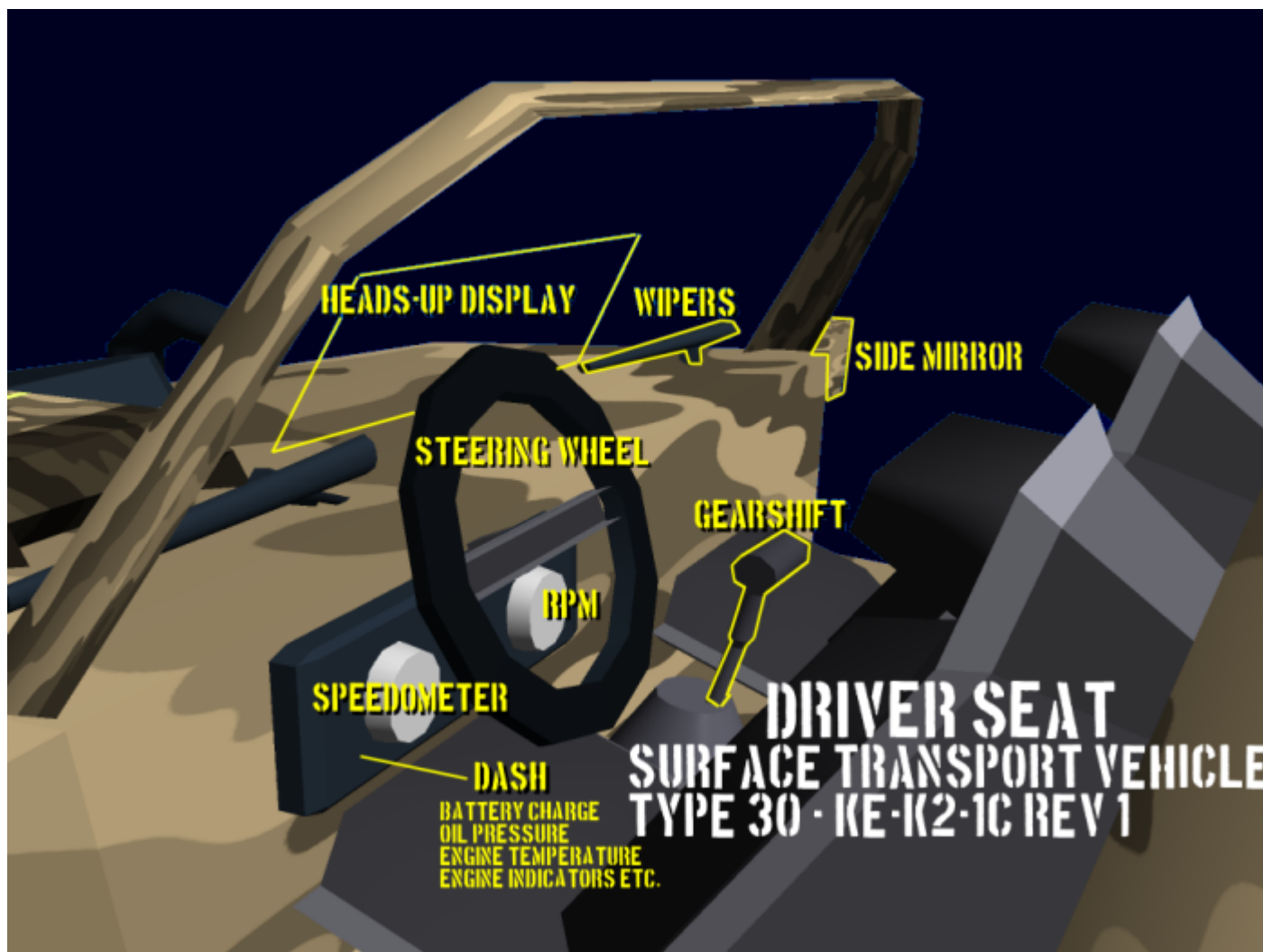
Where It Fits

The Surface Terrain Vehicle can fit into a [Ke-T7 "Raccoon" Transport Shuttle](#) if partially disassembled (wheels removed). The most common way to transport these vehicles into combat is by driving them down the rear ramp of a [Plumeria Gunship](#).

Damage Capacity

See [Damage Rating \(Version 3\)](#) for an explanation of the damage system.

- Body: 10 SP (Mecha Scale)



Key Features

Driving

- Fun to drive
- All-Wheel Drive with Normal and Ice Modes
- Independent Suspension
- Inboard disc brakes and side brakes
- Automatic Transmission (Gears: Park, Reverse, Neutral, Drive, Overdrive, Second, First)

Safety

- [Durandium Alloy](#) unibody hull construction.
- Transparent Durandium Windshield
- Yarvex-lined tires are nearly impossible to rupture.
- Safety harnesses
- Automatic Fire Extinguishing System
- Portal Axels with Central Tire Inflation System.
- Electronic engine and system monitoring
- Side mirrors
- Windshield wipers and cleaning fluid sprayers

Safety Warnings

- Prone to under-steering at higher speeds.
- Prone to rollovers during sharp turns at high speeds.
- If heavy cargo is loaded into the end of the truck but not the middle, it could cause the truck to tip backwards. Always load the cargo bed front to back, with heavier items closer to the vehicle's center of mass.
- Gunner may be thrown from the vehicle during sudden movements.

Utility

- 25 meter electric winch system
- Can be air-dropped
- Attachment points for sling loading
- [Psionic Signal Controller](#)
- Has small [Aether](#) generator
- Tow Ball
- Bulldozer Blade (Optional)

Civilian Version

The civilian STV was basically the same as the military one and was available in [YE 30](#) until [YE 31](#) just after the start of the [Second Mishhuvurthyar War](#) when manufacturing was redirected to military purposes. Owners of them occasionally get mail offers from the government offering to buy them back, but few owners are willing to part with them. Civilian models are based on the 1G variant and lack a machine gun mount.

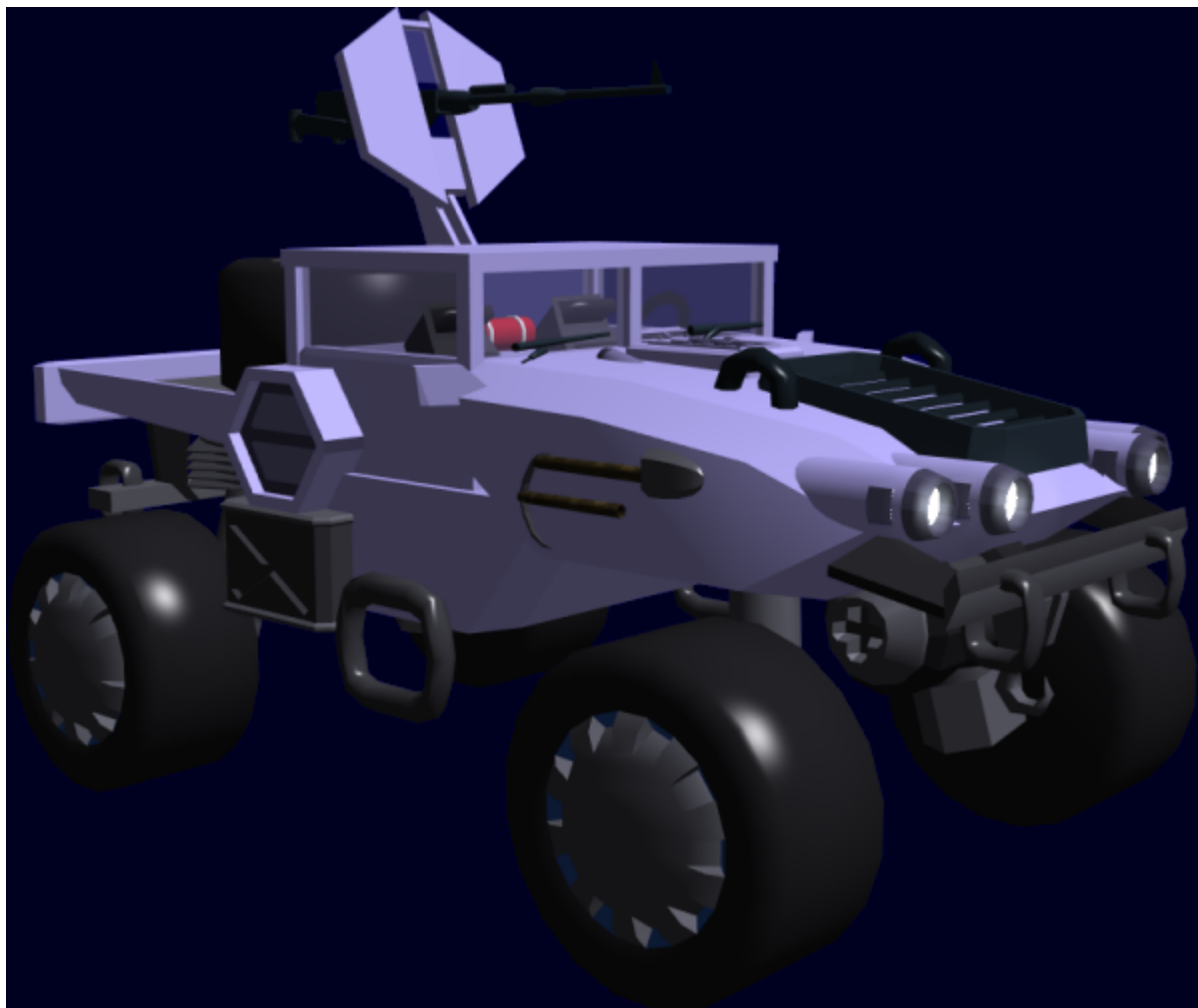


Appearance

The Surface Terrain Vehicle comes in light blue (starships), black (SAINT), and forest or desert camouflage (planetary forces).

STV 30H

The STV-30H is a variant with an armored hard top, transparent durandium windows, and additional protection for gunners. It is designed for use by troops who are not wearing power armor.



Older Models





OOC Notes

Authored [Wes](#) and approved by [Andrew](#) on January 10, 2008¹⁾

Star Army Logistics	
Supply Classification	Class C - VEHICLES AND POWER ARMOR
First Used	YE 30
Products & Items Database	
Product Categories	vehicles
Product Name	Surface Terrain Vehicle
Nomenclature	Ke-K2-1
Manufacturer	Ketsurui Zaibatsu

¹⁾
<https://starmy.com/roleplay-forum/index.php?threads/kz-type-30-surface-transport-vehicle.1209/>

From:
<https://wiki.starmy.com/> - **STAR ARMY**

Permanent link:
https://wiki.starmy.com/doku.php?id=starmy:vehicles:kz_type_30_stv

Last update: **2023/12/21 01:02**

