

# Type 34 Interior Sensor System

The Type 34 ISS is a replacement for the [Type 31 Lifeform Detection System](#), it became available in [YE 34](#).

## History

The Type 34 ISS was designed by [Jalen Sune](#) at the request of a former crew member, [Kage Yaichiro](#). The work was relatively simple, just a matter of expanding on his earlier design and was in fact something he originally considered.

## About the Type 34 ISS

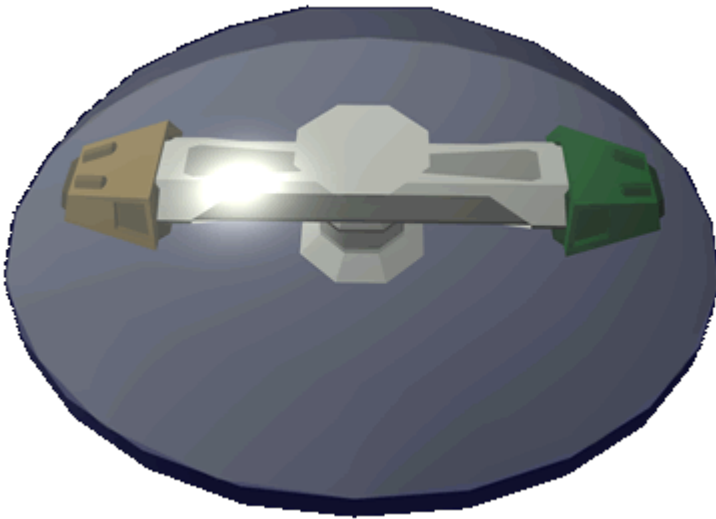
The Type 34 ISS is capable of using the following [Star Army Science Scanner, Type 31](#) modules; which gives it a greater range of function.

- [Ke-G1-E3100 - Life Form Scanner](#)
- [Ke-G1-E3101 - Chemical Scanner](#)
- [Ke-G1-E3102 - Emission Scanner](#)

The Ke-G1-E3103 is not supported to the risk it poses.

## Appearance

The ISS appears as a small small module with a transparent blue dome. Typically mounted on the ceiling of a passageway or room. Inside the dome the scanner assembly can be seen. The unit can be configured for either two or three sensor modules by replacing the armature.



## Dimensions

- Length: 20 cm (7.8 inches)
- Width: 20 cm (7.8 inches)
- Height: 6 cm (2.36 inches)

## Features

- Range: 100 meters (all modes)
- Basic setting provides the most basic scan each module can perform.
- Filter setting allows the operator program the modules to scan for specific items.

- Manual mode of the scanner allows the user to select and control the scanner manually.

Installation

Installation of the Type 34 ISS is at the discretion of the ship commander. Typically the units are installed to provide coverage over critical ship sections. However, it is possible to install them to provide ship wide coverage. Each unit must be connected to ship power and tied into the ship's computer network.

Usage

The Type 34 ISS is controlled by the ship's on-board computer and scans are run at predetermined intervals.

Default scan rates are as follows:

Ship Status	Interval
Normal	once every 30 minutes
Alert	1 per minute
Combat	60 scans a minute

Calibration

The Type 34 ISS requires routine calibration to maintain efficiency. Calibration should be done once every 3 months.

Star Army Logistics	
Supply Classification	Class E - PARTS AND COMPONENTS
Products & Items Database	
Product Categories	electronics, safety equipment, subsystems
Product Name	Interior Sensor System
Nomenclature	Type 34

From:  
<https://wiki.stararmy.com/> - STAR ARMY

Permanent link:  
[https://wiki.stararmy.com/doku.php?id=stararmy:systems:type\\_34\\_interior\\_sensor\\_system](https://wiki.stararmy.com/doku.php?id=stararmy:systems:type_34_interior_sensor_system)

Last update: 2023/12/21 01:02

