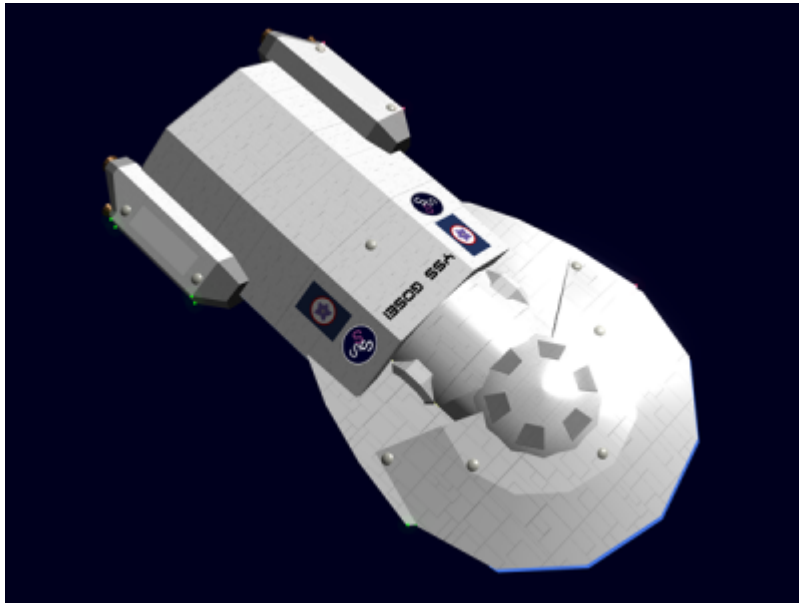


YSS Gosei

YSS *Gosei* , [YX-C1-0009](#), is a [Tansaku-class Science Vessel](#) built at the [Ketsurui Fleet Yards](#) on [Yamatai \(Planet\)](#) in [YE 31](#) for the [Scientific Studies Service \(SSS\)](#). It was upgraded to the 1B version in [YE 33](#)

About the Gosei



History

The *Gosei* was dispatched to explore the [Saiki Nebula](#). While the ship was stationary and deploying drones, it encountered a gravitational anomaly. Even though damaged, the *Gosei* was able to complete its initial survey and returned back to [Daichi](#).

Exploration

- [SX-06](#) - YE 32
- [SX-07](#) - YE 33
- [UX-5](#) - YE 35

From:
<https://wiki.starmy.com/> - **STAR ARMY**

Permanent link:
https://wiki.starmy.com/doku.php?id=starmy:starships:yss_gosei

Last update: **2023/12/21 01:02**



