

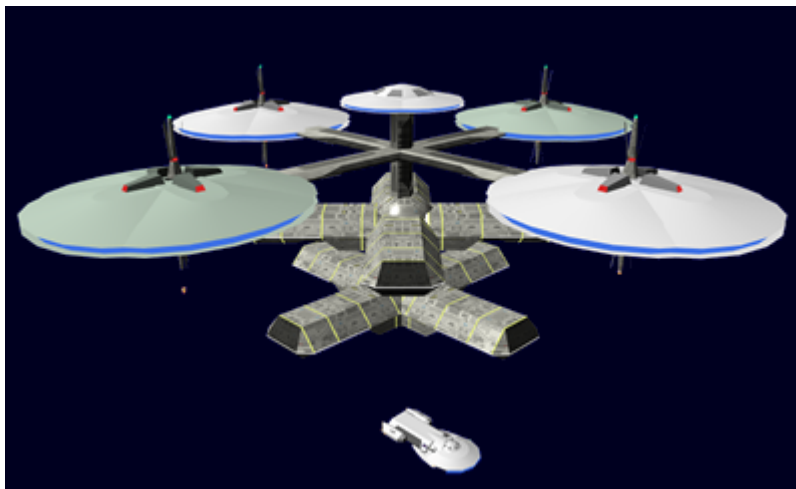
# YSS Sapurai

YSS *Sapurai*, [YK-C1-0003](#), is a [Kisaki-class Starbase](#) built at [Yamatai \(Planet\)](#), by [Ketsurui Fleet Yards](#) for the use of the [Scientific Studies Service](#) in [YE 31](#). It is commanded by Saigen Chiu.

It was the third [Kisaki-class Starbase](#) to be constructed.

Mission The *Sapurai* mission was to serve as a forward [Tansaku Staging Facility](#) for [SSS](#) vessels and expeditions. This role was expanded during [Project Kyasshu](#) to include manufacturing of equipment for expeditions as well as the stations.

In [YE 35](#) it was moved to its current location.



## General information

Purpose: Supply and Logistics Location: [Veronica](#) Crew: 400 Compliment: 4,800

## Vehicles assigned

- 4 [Tansaku-class Science Vessel](#)
- 12 [Ke-T7 "Raccoon" Transport Shuttle](#)
- 24 [Ke-T8-1b Kuma Shuttles \(Science Configuration\)](#)
- 4 [SSS Ge-E1-1a - Tenba-Class Transporter](#)

## Configuration

Module #	Type	Details
1	<a href="#">Ke-H4-M3101a - Residential</a>	
2	<a href="#">Ke-H4-M3101d - Manufacturing</a>	

Last update: 2023/12/21  
04:26

stararmy:starships:kisaki:yss\_sapurai [https://wiki.stararmy.com/doku.php?id=stararmy:starships:kisaki:yss\\_sapurai](https://wiki.stararmy.com/doku.php?id=stararmy:starships:kisaki:yss_sapurai)

Module #	Type	Details
3	<a href="#">Ke-H4-M3101a - Residential</a>	
4	<a href="#">Ke-H4-M3101d - Manufacturing</a>	

From:

<https://wiki.stararmy.com/> - **STAR ARMY**

Permanent link:

[https://wiki.stararmy.com/doku.php?id=stararmy:starships:kisaki:yss\\_sapurai](https://wiki.stararmy.com/doku.php?id=stararmy:starships:kisaki:yss_sapurai)

Last update: **2023/12/21 04:26**

