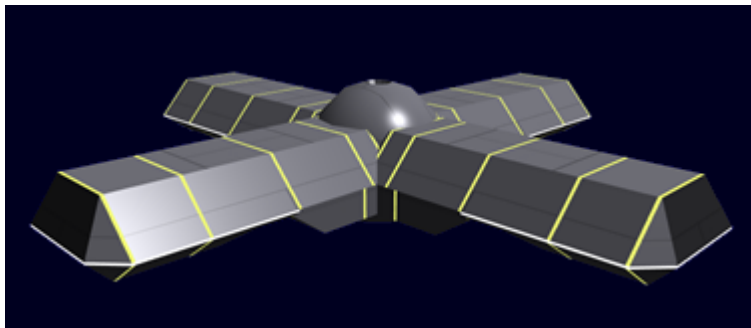


Kisaki - Ship Bays

The [Kisaki Starbase](#) ship bays provide the [Scientific Studies Service \(SSS\)](#) with the means to load, service, and repair their starships. The bays are arranged in a cluster of four. Each has a repair bay large enough to accommodate a [Tansaku-class Science Vessel](#) or even a [Plumeria-class \(2D\) Medium Gunship](#). The inclusion of the [Plumeria-class](#) was made to allow [Star Army of Yamatai](#) vessels that escort the SSS ships to have access to repair and servicing.



Statistical Data

General

Organizations Using Module: [Scientific Studies Service \(SSS\)](#), [Star Army of Yamatai](#) Class: Ship Bay
Nomenclature: Ke-H4-M3102 Type: Kisaki-Module

Bay Control Station

Located in the center of the Ship Bays module is the Bay Control Center (BCS). This is where all operations in the bay are overseen and controlled. It has the following:

Computer room

Located directly below the control room is a [standard computer room](#). It houses the BCS's [Compact Integrated Electronics System \(CIES\)](#) and is equipped with a [Psionic Signal Controller](#).

Control room

The BCS control room is basically a modified [Basic Small Starship Bridge](#). There is a [standard toilet](#) adjacent to it. The control room is located at the top of the BCS.

Engineering

The BCS has an [Standard Engineering](#) section. It supplies power and life support to the center and the four repair bays. It occupies the lower two levels of the BCS.

Lounge

It has a [Standard Star Army Crew Lounge](#) for use of the workers between activities. There are four [standard toilets](#) adjacent to it. It is located on above the Engineering section.

Transit Station

The BCS has a [Transit Station](#), it is located next to the computer room beneath the control room.

Bay Control Station systems

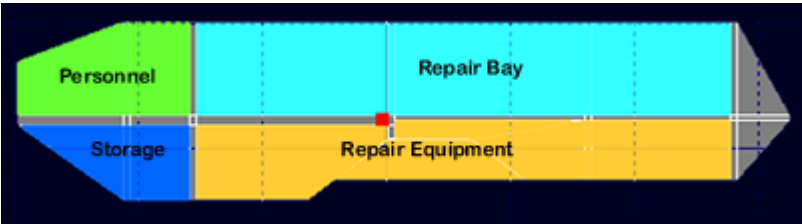
Emergency Systems

The BCS has the full compliment of [Star Army Standard Starship Emergency Systems](#).

Life Support

The BCS uses [Star Army Standard Life Support Systems](#).

Inside the Ship bay



Section	Description
Personnel	Staging area for deploying SSS personnel
Repair bay	Facility for repairing and servicing ships
Repair equipment	Where the equipment for repairing ships is stored
Storage	Staging area for expedition equipment

Repair Bay

The repair bay is a compact version of the [repair dock](#) of the [Ikoi starbase](#). The repair bay equipment is housed in the decks beneath the repair bay.

Repair bay Dimensions

Length: 276 meters (905 feet) Height: 30 meters (98.4 feet) Width: 168 meters (551 feet)

Construction

The *Kisaki* repair bay does have the capability to construct ships. However, this function is only used by the SSS to replace a [Tansaku-class Science Vessel](#) that is too severely damaged to repair, or destroyed.

Class	Description	Build Time
Light	Tansaku-class Science Vessel	7 days

From:

<https://wiki.stararmy.com/> - **STAR ARMY**

Permanent link:

https://wiki.stararmy.com/doku.php?id=stararmy:starships:kisaki:ship_bays

Last update: **2023/12/21 04:26**

