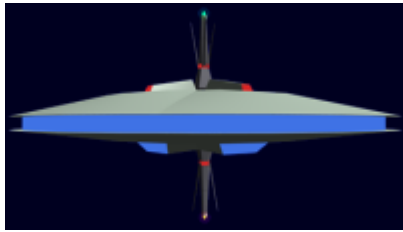


# Kisaki - Manufacturing - Habitat Module

This module is intended to provide manufacturing facilities for use by the [SSS](#) on the [Kisaki Starbase](#).



See the [Kisaki - Habitat Module](#) for description of common features.

## Statistical Data

### General

Organizations Using Module: [Scientific Studies Service \(SSS\)](#), [Star Army of Yamatai](#) Class: Manufacturing  
Nomenclature: Ke-H4-M3101d Type: Kisaki-Habitat Module

### Crew and Accommodations

Crew: 100

## Inside the Research - Habitat Module

There are thirty decks in the module; this page only refers to those decks unique to this module.

Deck	Sections
Six	Factory A
Seven	Factory A
Eight	Factory A
Nine	Factory A
Ten	Factory B
Eleven	Factory B
Twelve	Factory B
Thirteen	Factory B
Fourteen	Dining Hall and Galley, Lounge
Fifteen	Medical, Crisis Station, Transit stations(6)

Deck	Sections
Sixteen	Medical, Crisis Station, Transit stations(6)
Seventeen	Material Processing A
Eighteen	Material Processing A
Nineteen	Material Processing B
Twenty	Material Processing B
Twenty-one	Cargo Bay
Twenty-two	Cargo Bay
Twenty-three	Cargo Bay
Twenty-four	Cargo Bay
Twenty-five	Cargo Bay

## Cargo bay

The main storage for this module the [standard cargo area](#) is located on decks twenty-one through twenty-five. This area is for storing raw materials for use in construction of SSS equipment, and finished products.

## Crisis Station

The manufacturing module also features a Crisis Station to handle industrial accidents. This is basically a first responder station. Whose personnel are trained in fire fighting, damage control, and emergency medical treatment.

This facility provides the following:

- office space for the responders
- storage for emergency equipment

## Dining Hall and Galley

This facility is located on deck fourteen; it provides a dining facility for the workers.

### Dining Hall

This is the [dining hall](#) for the works.

### Galley

The [galley](#) is where the meals are prepared.

## Factory

There are two factory levels in this module. They are dedicated to manufacturing equipment unique to the SSS.

### Factory A

These factories produce personal, such as the [Tanken uniform](#), [Tanken armor](#), scanner equipment such as [Star Army Science Scanner, Type 31](#).

### Factory B

These factories are dedicated to manufacturing large equipment for the SSS. Example being [Collapsible Rapid Deployment Module](#), shelters.

## Lounge

Located on deck fourteen this [lounge](#) is intended for the use of the workers to take breaks.

## Material Processing

These two facilities are the starting point of manufacturing. These levels are dedicated to taking raw materials and through various processes refining them into ready to use materials. Example: taking silicates and producing glass, and ores to make refined metals.

## Medical Center

This module features a medical center featuring both trained staff facilities and [Autonomous Medical Treatment Center](#) units that focus on emergency care. It is located on decks seventeen and eighteen.

From:  
<https://wiki.stararmy.com/> - **STAR ARMY**

Permanent link:  
[https://wiki.stararmy.com/doku.php?id=stararmy:starships:kisaki:habitat\\_modules:manufacturing](https://wiki.stararmy.com/doku.php?id=stararmy:starships:kisaki:habitat_modules:manufacturing)

Last update: **2023/12/21 05:26**

