

# Yamato-Class Flagship

The Yamato-Class Flag Ship was created under order of [Mikasa Sorano-Taisho](#) for the [Second Expeditionary Fleet](#) it became available in [YE 33](#).

## About the Yamato-Class

The concept of the Yamato-Class was shifted to focus on command, and protecting assets. It is armed with a formidable array of weapons, but nothing compared to its predecessor. It is designed to transport non-fold ships to and from combat, such as the [Chiaki-class \(1B\) Escort Destroyer](#), and [Hayai-Class Gunboat](#). It accomplishes this by using the same fold extender that the [Heitan-class Carrier](#) field tests. This has the added factor of concealing the number of vessels approaching from the enemy.

The Yamato-Class also has the ability to extend its shields to cover other vessels. This is done at the loss of overall shield strength and is intended to give damaged ships a reprieve from enemy fire and stabilize their systems.

The redesign of also reduced the size of the new Flag ship to 2,300 meters, less than half the size of the [Chiharu](#) (5,000m) and making the new design closer to the [Takumi](#) (2,700m). The Yamato-Class has two communications arrays mounted ventrally and dorsally to ensure that the ship can stay in touch with its fleet.

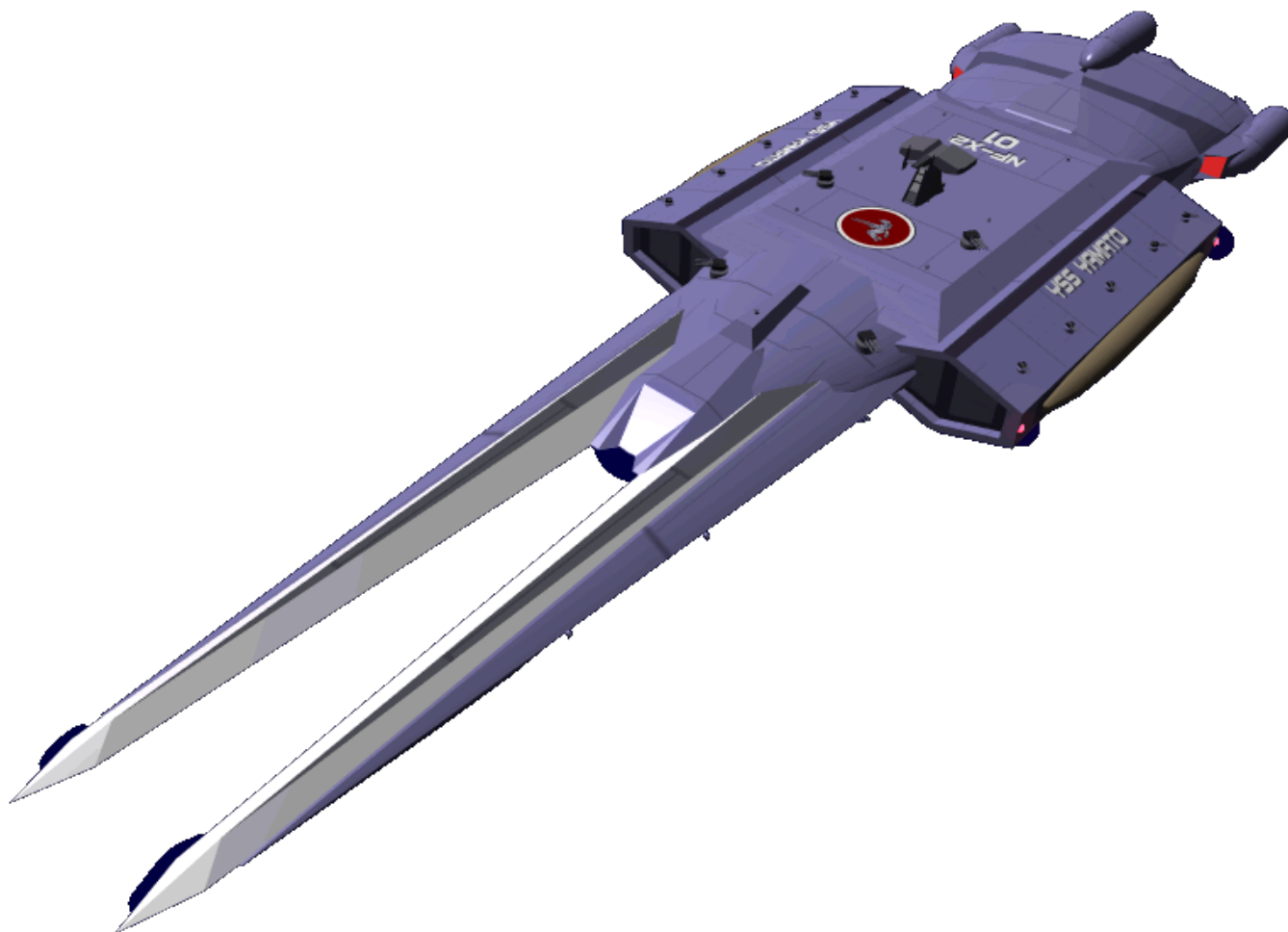
## Appearance

The dominant feature of the Yamato-class is the [Ke-B3-W3000 Main Weapon Array](#), on both sides large recovery bays are present capable of housing large numbers of ships. The Yamato-Class is Star Army Blue with the [Star Army Hinomaru](#) on the top in front of the dorsal communications array. The ship's name is on top of the recovery bays.

Along the outer edge of the recovery bay is the fold and shield boosters. Aft is the drive section with four massive [Turbo Aether Plasma Drive](#) drives are visible. Also located stern are two bays for ships' craft. Sixteen ship guns dot the exterior.

## History

The new design came about when the [YSS Yamato](#) a heavily damaged [Chiharu-class Flagship](#) was acquired by the 2XF. The Taisho having served on the ship in the past wanted to salvage it. During the evaluation, it was deemed necessary to completely overhaul the ship and a new design came out of the effort. After a year of rework, design and testing the Yamato-Class is the resulting design.



## Statistics and Performance

### General Information

Type: Flagship Class: Ke-B4 Series Designer: [Ketsurui Fleet Yards](#), [Takumi](#) Manufacturer: [Ketsurui Fleet Yards](#) Production: Test types in production Fielded by: [Star Army of Yamatai](#), [Second Expeditionary Fleet](#), [Fourth Fleet](#), [First Expeditionary Fleet](#)

### Crew and Accommodations

Crew: About 2,000 [Nekovalkyrja](#). Maximum Capacity: About 5,000 persons.

## Dimensions

- Length: 2,300 meters (7,544 feet)
- Width: 900 meters (2,952 feet)
- Height: 300 meters (984 feet)
- Decks: 75 decks (4 meters)



## Damage Capacity

See [Damage Rating \(Version 3\)](#) for an explanation of the damage system.

- Hull: 50
- Shields (normal): 50 (Threshold 5)
- Shields (extended): 30 (Threshold 3)

## Performance

- Sublight Engines: (89,937.74 km/s) .3c
- [Continuum Distortion Drive](#): None
- [Hyperspace Drive](#): 394,470c (0.75 ly/m)
- *Note: The Yamato-Class is not intended to operate in an atmosphere, but it could if necessary by brute force of its engines.*

## Durability and Maintenance

- Range: Unlimited
- Lifespan: The vessel is estimated to operate for at least 20 years of constant use.
- Refit Cycle: Frequent minor modifications while in service through the PANTHEON automatic upgrade system. Despite its long development time, the design could be subject to alterations

based on its experiences in the [Second Mishhuvurthyar War](#).

## Inside the Yamato-Class



### Compartment Layouts

#### Conduits and Passageways

- [Standard Star Army Airlock](#)
- [Standard Star Army Maintenance Conduits](#)
- [Standard Passageways](#)
- [Standard Star Army Zero-Gravity Passageways](#)

#### Control Centers

- [Standard Medium Starship Bridge \(Sakura type\)](#) (8 stations + captain, two level)
- [Star Army Flag War room](#)

#### Living and Dining Areas

- [Standard Star Army Crew Cabin \(Enlisted\)](#)
- [Standard Star Army Crew Cabin \(officers\)](#)
- [Star Army Standard Captain's Suite](#)
- [Star Army Admiral's Suite](#)
- [Standard Star Army Crew Lounge](#)
- [Standard Star Army Crew Baths](#)
- [Standard Star Army Crew Shower](#)
- [Standard Star Army Toilet](#)
- [Standard Star Army Dining Hall](#)
- [Standard Star Army Galley](#)
- [Standard Star Army Laundry Room](#)
- [Traditional Nekovalkyrja Nests](#)
- [Standard Star Army Wardroom](#)

## Science and Medical Areas

- [Sakura-type Medical Laboratory](#)
- [Autonomous Medical Treatment Center](#) during alerts

## Storage and Maintenance Areas

- [Standard Star Army Cargo Area](#)
- [Standard Damage Control Station](#)
- [Standard Star Army Armory](#)
- [Standard Star Army Power Armor Bay](#)

## Systems Rooms

- [Standard Computer Room](#)
- [Standard Star Army Engineering Bay](#)
- [Standard Star Army Fabrication Area](#)

## Morale related

- [Star Army Ship's Store](#)
- [Standard Star Army Post Office](#)

## Recovery Bays (2)

Located on either side of the Yamato-Class are the recovery bays. They are used after battle to house damaged vessels to be taken back to the nearest base for repairs. They are large open areas that are kept at zero-g. Along the inner wall are twenty-five telescoping docking umbilicals. Located on the top and bottom of the bay are fifty telescoping docking arms to hold the ships secure.

## Bay Dimensions

- Length: 500 meters
- Height: 100 meters
- Width: 150 meters

## Ships That Fit per bay

- 7 - [Plumeria-class \(2D\) Medium Gunship](#)
- 25 - [Chiaki-class \(1B\) Escort Destroyer](#)<sup>1)</sup>
- 25 - [Nozomi-class Scout](#)<sup>2)</sup>

- 25 - [Yui 7-class Scout](#) <sup>3)</sup>
- 25 - [Midori-Class Scout Ship](#) <sup>4)</sup>
- 25 - [Hayai-Class Gunboat](#) <sup>5)</sup>

## Aerospace craft Bays

The Yamato-Class has two large aerospace craft bays, located in the aft section of the ship on each side. Each bay has two separate launch/recovery areas, and beneath the launch/recovery area is the craft maintenance berths.

The launch/recovery area is three decks high and allows for rapid launching and recovering craft. There are four elevators capable of raising and lowering two of the largest craft between the maintenance and launch/recovery area. Four fighters can be raised or lowered by a single elevator.

Each maintenance area is two decks high and has twenty berths for craft, giving each side a capacity for forty vehicles. Each maintenance berth has a [Star Army Tool Locker](#) for maintaining the craft.

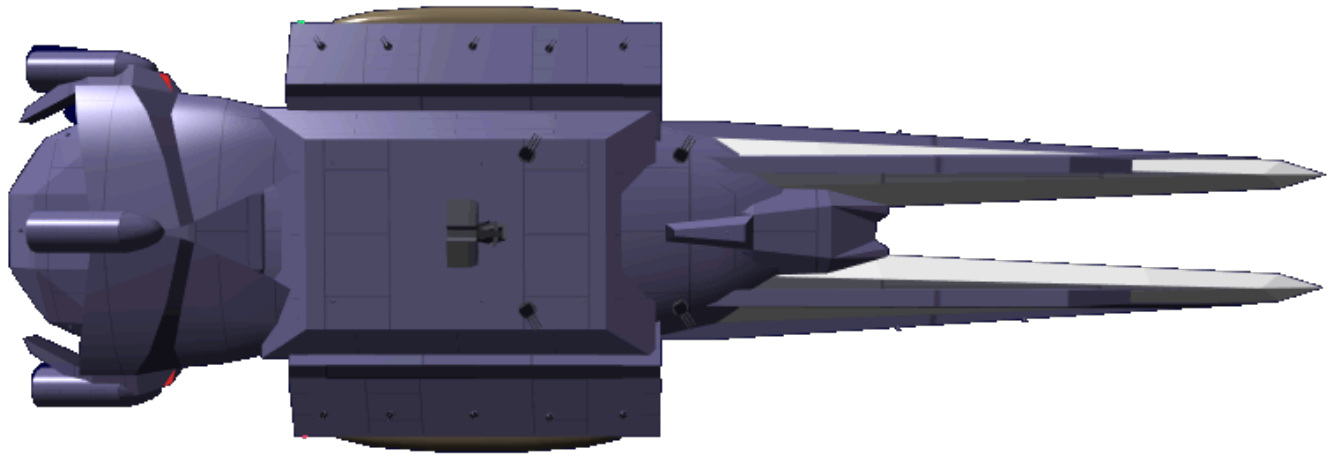
## Power Armor

The [standard power armor bays](#) are located next to the aerospace craft bays, and soldiers wearing power armor use those bays to exit and return.

## Docking Ports

Located on the upper and lower portions of the recovery bays are located a retractable docking port. The docking port consists of telescoping mechanical clamps to secure the vessel. Each port also contains a telescoping docking airlock to allow personnel to transfer from the damaged vessel to the Flagship.

## Systems



## Armored Hull

The *Yamato* has a one meter thick hull of [Yamataium](#). The frame of the ship is [Durandium Alloy](#). All windows on the Yamato-Class are [Volumetric Windows](#).

## Computer and Sensor Systems

- [KAMI](#) for computer and sensors and is equipped with a [Psionic Signal Controller](#).
- [Star Army Standard Starship Emergency Systems](#).
- [Star Army Standard Life Support Systems](#).

## Power

- Aether main power; alternate power sources (such as anti-matter) available; liquid and scalar cooling.

## Blast Shutters

On the *Yamato* [Forcefield-Nested Isolation Doors](#) are used instead of older style shutters.

## Ke-B4-P3300 Hyper Spacefold Engine

The Yamato-Class has two [Ketsurui Fleet Yards Hyperspace Fold Engines](#). One is sufficient to allow the Flagship to travel. The other engine is only used in conjunction with the Ke-B4-P3301 Fold Booster.

## Ke-B4-P3301 - Hyperspace Fold Field Booster

The Yamato-Class has a pair of hyperspace fold emitters which allow the carrier to produce a fold bubble large enough to encompass a group of ships. The compliment of warships is then taken into hyperspace for rapid engagement of the enemy when they drop out. They are located on the sides of the carrier.

The Boosters allow the Yamato-Class to generate a hyperspace bubble of one kilometer in radius. They operate in the same fashion as those on the [Heitan-class Carrier](#).

## Ke-B4-P3302 Turbo Aether Plasma Drive

The Yamato-Class utilizes four [Turbo Aether Plasma Drive](#) drives for sublight propulsion.

## Ke-B4-P3303 Maneuvering Thrusters

The Yamato-Class has twenty-four clusters of ion thrusters. These are used for attitude control, station keeping, and docking maneuvers.

## Ke-B4-S3300 Combined Field System

The Yamato-Class uses a [Combined Field System](#) for its shields to defend the warship. It is configured only for defense and stealth capabilities.

## Ke-B4-S3301 CFS Shield Expander

The Yamato-Class has CFS Shield Expander, this system expands the shields to cover a larger area. Allowing the Flagship to use its shields to protect its escorts. However, this expansion is not without cost. Expanding the shields to maximum reduces the effectiveness by 40%.

## Weapons Systems

- [Multi-Mode Aether Shock Array](#) (DR 15)

Battleships and Flagships				
Type	Damage Tier	Rate of Fire	Maximum Range	AOE
Rapid Pulse	<a href="#">Tier 11</a>	60 pulses/minute	149,000,000 kilometers	Single Target
Heavy Pulse	<a href="#">Tier 14</a>	20 pulses/minute	149,000,000 kilometers	Single Target
Beam	<a href="#">Tier 15</a>	5 beams/minute	149,000,000 kilometers	Single Target
Spread	<a href="#">Tier 12</a>	2 spreads/minute	10,000,000 kilometers	30° Cone



- 8 [Ke-B3-W3100 Superheavy Turret](#) (2 above, 2 below; DR 5)
- 20 [Heavy Dual Anti-Starship Gun Turrets](#) (Tier 11, Medium Anti-Starship)
- 24 [Heavy Quad Anti-Mecha Cannons](#) (Tier 9, Heavy Anti-Mecha) Retractable

## Ship Vehicles

This is the typical compliment of Aerospace craft that can be carried on the Yamato-Class.

- 40 Support Craft
  - 10 [Kainushi-Class Tug Vessel](#)
  - 15 [Ke-T7 "Raccoon" Transport Shuttle](#)
  - 10 [Ke-T8 "Kuma" Multi-role Shuttle](#)
  - 5 [Kuma T8 Medevac Shuttle](#)
- 40 Fighters (The Yamato-Class carries 3 [Star Army Fighter Squadrons](#) and 4 recon craft
  - 4 [Ke-V8 "Teisatsu" Fighter](#)
  - 18 [Ke-V8 "Kawarime" Fighter](#)
  - 18 [Ke-V6-1D "Hayabusa" Starfighter](#)



## Power Armors

The Yamato-Class has [Power Armor Bays](#) sufficient to house 250 power armors

# Ships of Class

- [YSS Yamato, NF-X2-0001](#) - 2XF ( 🇯🇵 Lead ship of class)
- [YSS Teikiatsu, NF-X2-0002](#) - 2XF
- [YSS Nadare II, NF-S4-0010](#) - 4SF
- [YSS Yamakuzure, NF-S4-0011](#) - 4SF
- [YSS Yamatai, NF-X1-01](#) - 1XF
- [YSS Densetsu, NF-S7-01](#) - 7SF
- [YSS Amagi, 9SF](#)

# OOC Notes

Created by [Nashoba](#)

[Approval Thread](#)

Star Army Logistics	
Supply Classification	Class A - STARSHIPS
Products & Items Database	
Product Categories	starships
Product Name	Yamato-Class Flagship
Nomenclature	Ke-B4
Manufacturer	<a href="#">Ketsurui Fleet Yards</a>

- 1)  
space for 27 but only 25 docking umbilicals
- 2)  
space for 130 but only 25 docking umbilicals
- 3)  
space for 540 but only 25 docking umbilicals
- 4)  
space for 120 but only 25 docking umbilicals
- 5)  
space for 700 but only 25 docking umbilicals

From:  
<https://wiki.stararmy.com/> - **STAR ARMY**

Permanent link:  
[https://wiki.stararmy.com/doku.php?id=stararmy:starship\\_classes:yamato-class\\_flagship](https://wiki.stararmy.com/doku.php?id=stararmy:starship_classes:yamato-class_flagship)

Last update: **2023/12/21 01:02**

