

Nougaku-Class Agriculture Vessel

The Ke-L6-2a *Nougaku*-class Agriculture Vessel is a variant of the [Henry Chen-class Training Ship](#) that became available in [YE 31](#).

Under the [Military Buildup Limitations](#), the *Nougaku* are considered warships.

About the Nougaku

The *Nougaku*-class Agriculture Vessel is a combination of mobile farm, and cargo ship. It is customizable by the owning organization.

The *Nougaku* has four separate facilities for growing and processing produce. They are the [Arboretum](#), [Aeroponics](#), [Hydroponics](#), and [Fish farms](#).

Star Army Logistics

Ships operated by Logistics travel in groups and are intended to provide fresh produce to remotely stationed [Star Army of Yamatai](#) ships and installations. Each vessel will normally stock a particular set of produce for a given run(s).

Yamatai Star Empire - Department of Colonization

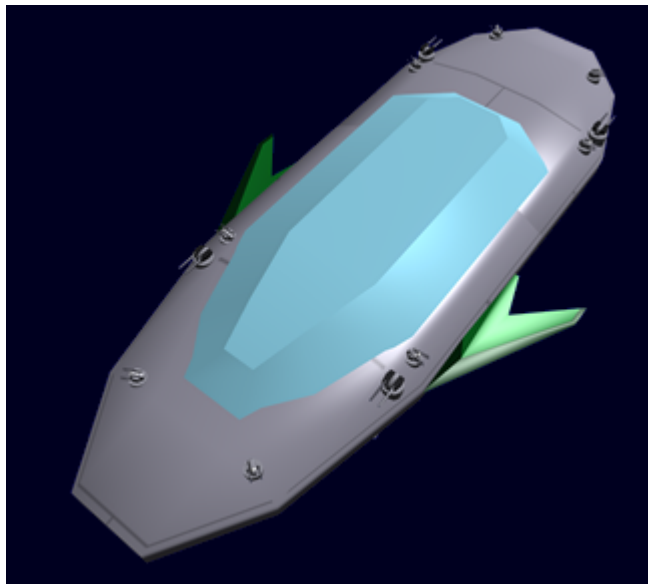
Ships owned by Colonization fulfill these functions:

- Deliver fresh food and provisions to resupply a colony.
- Deliver plants, fish and animals for introduction to a colony world to establish or augment the local food supply. If necessary the above items can be genetically modified to adapt them to the destination world.

History

The initial design concept for the *Nougaku* was started in [YE 30](#). Logistics needed a better means of resupplying [Star Army of Yamatai](#) forces in remote locations. During the design phase they chose to simplify their task by using the hull and primary systems of the [Henry Chen-class Training Ship](#) and add to it. Originally intended to be a large freighter, [Takumi](#) proposed having the ship grow the majority of the products it delivers. This feature is one of the reasons the Department of Colonization chose to use this vessel as well.

Appearance



The *Nougaku* uses the same hull as the [Henry Chen-class Training Ship](#), except that it does not have the weapon pylons, and the bottom pods are replaced. The top two decks of the the *Nougaku* are covered with [Transparent Durandium](#) instead of [Yamataium](#).

Statistical Data

General

- Class: *Nougaku*-class Agriculture Vessel
- Nomenclature: Ke-L6-2a
- Type: Combat Agricultural Vessel
- Designers: [Ketsurui Fleet Yards](#), [Takumi](#), [Ketsurui Zaibatsu](#), [Star Army Research Administration](#)
- Manufacturer: [Gemini Star Fortress](#), [Ketsurui Fleet Yards](#)
- Organization Using This item: [Star Army Logistics](#), [Yamatai Star Empire](#) - Department of Colonization
- Production: TBD

Crew and Accommodations

Crew: 375 (350 Enlisted, 25 Officers). 750 people can fit aboard in an emergency, but the ship would be extremely cramped.

Dimensions

- Length: 360 meters (1,180.8 feet)
- Width: (Fuselage) 120 meters (393.6 feet)
- Width: (Overall) 200 meters (656 feet)

- Height: 60 meters (196.8 feet)
- Decks: 14 (4 meters each)

Propulsion and Range

Speeds

- Atmospheric: Cruise: 2,283 kph (3,675 mph) Maximum: 6,125 kph (3,806 mph)
- Turbo Aether Plasma .3c (~89,937 kilometers per second) (~55,884 miles per second)
- [Combined Field System/Continuum Distortion Drive](#):
 - Minimum: Resting motionless
 - Cruising Speed: 10,000c (~1.144 ly/h)
 - Maximum Speed: 12,500c (1.43 ly/h)
- Hyperspace Drive: 394,470c (0.75ly/m)

See [Star Army of Yamatai Starship Speeds](#) for a comparison of the *Nougaku*'s speeds with other ships of the [Star Army of Yamatai](#). This ship is equipped with [Anti-FTL field](#) countermeasures.

Durability and Maintenance

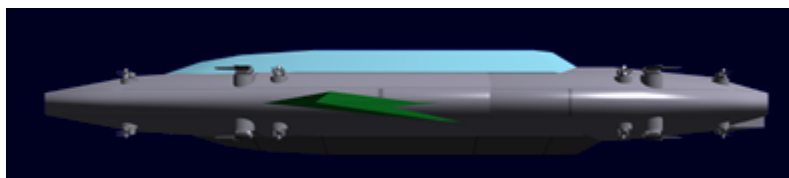
- Service Lifespan: Estimated 20 years of constant use, although this could certainly be extended.
- Refit Cycle: Frequent minor updates through the [PANTHEON](#) system and a refit once every two or three years.

Damage Capacity

See [Damage Rating \(Version 3\)](#) for an explanation of the damage system.

Hull: 40 Shields: 40 (Threshold 2)

Inside the Nougaku-class Agriculture Vessel



Deck	Sections
One	Arboretum
Two	Arboretum
Three	Hydroponics

Deck	Sections
Four	Aeroponics
Five	Fish Farm
Six	Fish Farm
Seven	Engineering, Bridge, Avionics, Wardroom, Medical Center
Eight	Engineering, MEGAMI, Crew lounge, Ship's Store , Post Office
Nine	Engineering, Crew Quarters, Laundry, Crew Mess & Galley
Ten	Shuttle Bay, Armory, Recreation / Fitness Area
Eleven	Shuttle Bay, Armory, Cargo Bay
Twelve	Fabrication Area, Cargo Bay
Thirteen	Vehicle bay, Mission Specific Cargo bay
Fourteen	Vehicle bay, Mission Specific Cargo bay

Arboretum

The Arboretum of the *Nougaku* is a farming facility; dedicated to growing crops in the conventional fashion. It is two decks high to allow crops that need more space to flourish. The outer hull of this area is covered in [Transparent Durandium](#) to allow sunlight to enter when the ship is in orbit. There is additional lighting for when there is insufficient solar radiation. Located aft is the section where harvested produce is gathered and processed for delivery or storage. It is adjacent to the [freight elevators](#).

Aeroponics

The 🌱 [Aeroponics](#) bay allows the *Nougaku* to grow specialized crops that do not require a growth medium. It is located on deck four. Located aft is the section where harvested produce is gathered and processed for delivery or storage. It is adjacent to the [freight elevators](#).

Armory

The *Nougaku* has a [Standard Star Army Armory](#). It is located on decks ten and eleven.

Avionics

The *Nougaku* avionics are located in the bow on deck seven, and contains the following sensors:

Passive Omni-directional Sensors

- [Ks-MIES-E3010 - Aether Wave Detection and Ranging System](#)
- [Ks-MIES-E3011 - Wave-front Affinity Resonance Monitoring System](#)
- [Ks-MIES-E3012 - Imaging Array](#)
- [Ks-MIES-E3013 - Subspace Mass Detector](#)

- [Ks-MIES-E3014 - Mixed Sensor Array](#)

Active Omnidirectional Sensors

- [Ks-MIES-E3020 - Aether Pulse Doppler Rapid Tracking System](#)
- [Ks-MIES-E3021 - Quantum Remote Scanner](#)
- [Ks-MIES-E3022 - Hyperspace Pulse Doppler Detection and Tracking System](#)

Uni-directional Sensors (Passive)

- [Ks-MIES-E3030 - Forward Sensor Cluster Array](#)

Bridge

The *Nougaku* has a [Standard Medium Starship Bridge \(Sakura type\)](#) it is located on deck seven.

Cargo Area

The *Nougaku* has an extensive [cargo area](#), as well repair materials for the ship and its systems. They are stored in a variety of [Standard Starship Cargo Containers](#). The cargo bay is located in the forward sections of decks fourteen, thirteen, twelve and eleven in two deck sections. Exterior doors allow loading into deck fourteen. Cargo elevators allow cargo to be transferred to decks twelve and eleven.

Computer Room

The *Nougaku* has a [Standard Computer Room](#). It is located under the bridge.

Engineering

The *Nougaku* has a [Star Army Engineering](#) room except that it is three decks high. It is located aft on decks seven, eight and nine

Fabrication Area

The *Nougaku* [Star Army Fabrication Area](#). It is located on deck twelve.

Fish Farm

The fish farm on the *Nougaku* is located on decks five and six. It consists of a series of vats that contain either fresh water or salt water, and the appropriate filtration and temperature control system for each. Located aft is the section where harvested produce is gathered and processed for delivery or storage. It is adjacent to the [freight elevators](#).

Freight Elevator

The *Nougaku* features two freight elevators that run from deck two to fourteen. This allows produce grown on the upper levels to be transferred to the cargo hold or vehicle bay for delivery.

Hydroponics

The *Nougaku* has a 🌱 [Hydroponics](#) area set up on deck three. It provides the means to produce plants that either need to be grown in water, or do not need an active growth medium but need a support medium. Located aft is the section where harvested produce is gathered and processed for delivery or storage. It is adjacent to the [freight elevators](#).

Laundry Room

The *Nougaku* has eight [Standard Laundry Rooms](#). They are located deck nine.

Lounge

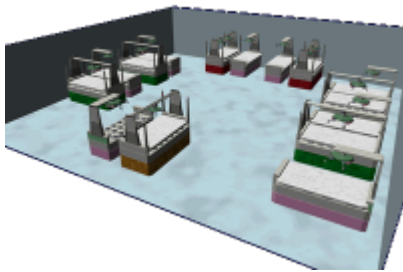
The *Nougaku* has a [Standard Crew Lounge](#). Located on deck eight.

Maintenance Conduits

The *Nougaku* uses [Standard Maintenance Conduits](#) to allow the crew to maintain the many systems onboard.

Medical Center

The *Nougaku* has a complete [Autonomous Medical Treatment Center](#) installation replacing a standard medical center. It is located on deck five.



Autonomous Medical Treatment Center		
Quantity	Unit	Image
5	Ke-J1-E3100 - Autonomous Triage Unit (ATU)	
20	Ke-J1-E3101 - Autonomous Nurse Unit (ANU)	
10	Ke-J1-E3102 - Autonomous Basic Medicine Unit (ABMU)	
5	Ke-J1-E3103 - Autonomous Surgical Medicine Unit (ASMU)	
2	Type 30 Mental Transfer and Backup Unit	
3	Hemosynthetic Reconstruction Tube	

Mess and Galley

Galley

There is one [Star Army Galley](#), scaled for the use of the *Nougaku* crew. It is located on deck nine.

Mess

There is one [Standard Star Army Dining Hall](#) scaled for the use of the *Nougaku* crew. It is located on deck nine.

Mission Specific Cargo bay

The Mission Specific Cargo bay, is a modified [Standard Star Army Cargo Area](#).

Logistics ships

This area located in the forward half of decks thirteen and fourteen contains meat lockers and freezers.

Department of Colonization ships

Have a choice of configurations for the forward half of decks thirteen and fourteen. They can either have the same lockers and freezers as the Logistics design, or when providing stock to introduce to a colony world this section is equipped with pens, and cages for keeping livestock.

Passageways

The *Nougaku* uses [Standard Passageways](#) for horizontal travel, and [Star Army Zero-gravity Passageways](#) for vertical travel.

Post Office

The *Nougaku* has a [Standard Star Army Post Office](#) located on deck eight.

Quarters

Ship Crew

There are 175 [Standard Crew Cabins](#) with seven [Star Army Laundry Rooms](#). They are located on deck nine. There are also [communal showers](#), and communal toilet facilities.

There are 25 [Standard Officers' Cabins](#) with one [Star Army Laundry Room](#). They are located on deck nine.

There are also two [crew baths](#), one for enlisted usage, and the other for officers.

Recreation / Fitness Area

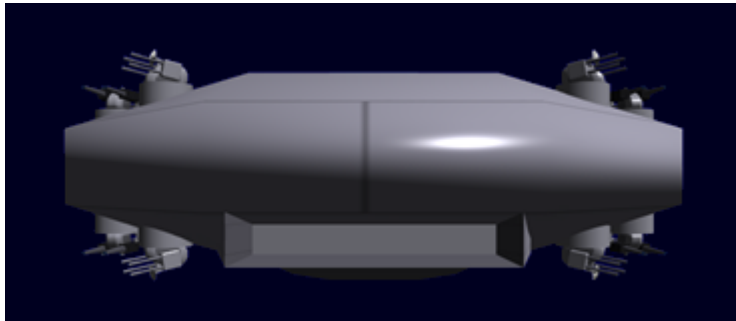
Located on deck ten of the *Nougaku* is the recreation and fitness area. This large area is designed to help keep the crew physically fit. The fitness side contains an assortment of exercise machines: weights, treadmills, several [massage units](#), etc. The other side is for recreation. It is configurable, for various activities; such as group calisthenics, practicing Katas, martial art matches, other sports.

Ship's Store

The *Nougaku* has a [Star Army Ship's Store](#). One is located on deck eight.

Shuttle Bay

The *Nougaku* has a [Star Army Shuttle Bay](#) located on the stern of the ship. It is located on decks ten and eleven.



Vehicle bay

There is one vehicle bay on the *Nougaku*. It is two decks high and are located on decks thirteen and fourteen. Adjacent to the vehicle bay on deck is the vehicle maintenance area.

Wardroom

The *Nougaku* has one [Standard Star Army Wardroom](#). It is located on deck seven.

Weapon placements

- [Ke-S3-W3101 Type 31 Secondary Anti-Starship Turret](#) are mounted four to a side, distributed roughly amidships.
- [Ke-S3-W3102 Star Army Anti-Fighter Turret, Type 31](#) are mounted four in the bow and four in the stern, four more are mounted to each side between the [Ke-S3-W3101 Type 31 Secondary Anti-Starship Turrets](#).

Ship Systems

Armored Hull

The *Nougaku* gets its armor from the Ke-L6-H3100 hull. The exterior is a 1.25-meter-thick layer of [Yamataium](#) attached to the [Durandium Alloy](#) frame of the ship. All windows on the *Nougaku* are made of [Transparent Durandium](#).

Combined Field System

The *Nougaku* uses a Ke-L6-S3100 [Combined Field System](#) of [Ketsurui Fleet Yards](#) design for shields.

Computer and Sensor Systems

The *Nougaku* uses the [MEGAMI Integrated Electronics System](#) package and is also equipped with a [Psionic Signal Controller](#). [Star Army Logistics](#) ships may also be equipped with a [Type 31 Electronic Warfare Suite](#).

Emergency Systems

The *Nougaku* contains all [Star Army Emergency Systems](#).

Blast Shutters

On the *Nougaku*, blast shutters are located:

- at the entrances to the armory (always locked and closed)
- at the entrance to the bridge
- at the entrance to the computer room (always locked and closed)
- at the entrances to engineering
- at the entrances to the recreation area
- at the entrances to the wardrooms
- at the entrances to the mess & galley areas
- at the entrances to the shuttle bay.
- at the entrances to the vehicle bay.
- at the entrances to the cargo bays.
- on every deck level in the main passageway and cargo lift shaft (between two and three, etc.)

Damage Control Stations

There are ten [Standard Damage Control Stations](#) on every deck of the *Nougaku*.

Escape Pods

The *Nougaku* is equipped with 75 [Star Army Escape Pod, Type 30s](#). They are positioned in strategic locations.

Soul Savior Pod

The *Nougaku* carries a [Soul Savior Pod](#).

Life Support System

The *Nougaku*'s [Life support systems](#) is of [Ketsurui Fleet Yards](#) design. It is intended to handle the requirements of 1175 [Nekovalkyrja](#) or [Yamtaians](#). It carries the same system as the [Henry Chen-class Training Ship](#) to handle the environmental needs of the produce sections.

Cooling System

All major heat-generating pieces of equipment are paired with [Ketsurui Fleet Yards](#) appropriately-sized heat absorbers, which rapidly and effectively absorb thermal radiation and convert it to usable energy.

Power Systems

The primary power source for the *Nougaku* is the Ke-L6-G3100 [Aether](#) generator. Secondary power is provided by four Ke-L6-G3101 fusion reactors. Fuel for the reactors is collected by the [Matter Collection System](#) and stored for later use.

Propulsion

Distortion drive

The *Nougaku* uses a Ke-L6-P3100 [Continuum Distortion Drive](#) of [Ketsurui Fleet Yards](#) design for its propulsion. It has no auxiliary engines, the [CDD](#) handles STL and FTL travel.

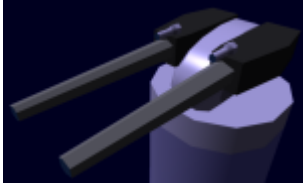
Hyperspace Fold

The *Nougaku* uses a Ke-L6-P3101 hyperspace fold engine of [Ketsurui Fleet Yards](#) design. See: [Hyperspace Travel](#)

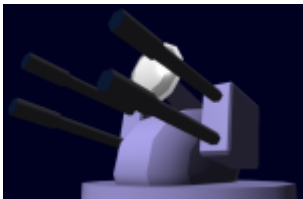
Weapons Systems

The *Nougaku* is armed to defend itself.

- 8 [Ke-S3-W3101 Type 31 Secondary Anti-Starship Turret](#) (Tier 11, Medium Anti-Starship)



- 16 [Ke-S3-W3102 Star Army Anti-Fighter Turret, Type 31](#) (Tier 9, Heavy Anti-Mecha) Point defense



Vehicle Complement

Shuttles

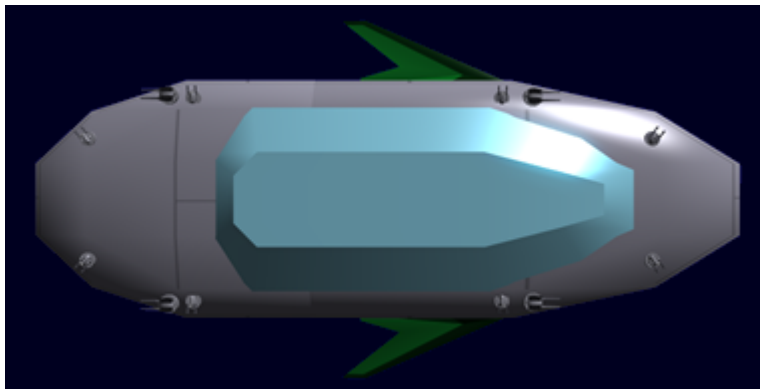
- 12 [Ke-T7 "Raccoon" Transport Shuttle](#)

Ground Vehicles

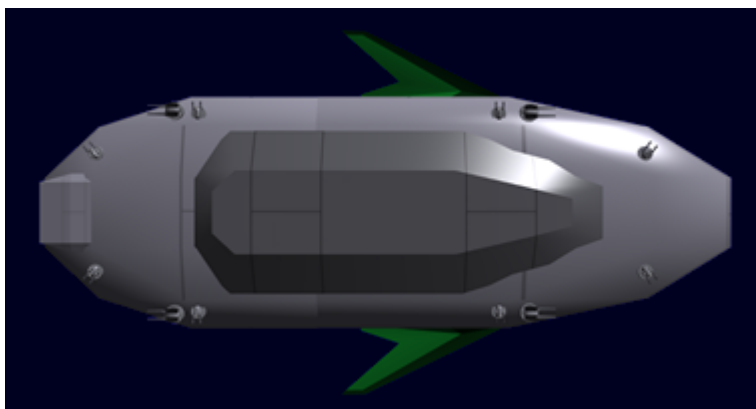
- 5 [Type 30 Container Handling Vehicle](#)
- 10 [Type 30 Light Utility Truck](#)

Images

- Top view



- Bottom view



OOC Notes

Star Army Logistics	
Supply Classification	Class A - STARSHIPS
Products & Items Database	
Product Categories	starships
Product Name	Nougaku-Class Agriculture Vessel
Nomenclature	Ke-L6-2a
Manufacturer	Ketsurui Fleet Yards

From:
<https://wiki.starmy.com/> - **STAR ARMY**

Permanent link:
https://wiki.starmy.com/doku.php?id=starmy:starship_classes:nougaku

Last update: **2023/12/21 01:02**

