

# Henry Chen-class Training Ship

The Ke-L6-1a *Henry Chen*-class Training ship is a mobile training facility that became available in [YE 31](#).

Under the [Military Buildup Limitations](#), the *Henry Chen* are considered warships.

## About the Henry Chen

The *Henry Chen*-class Training Ship is a mobile [Star Army of Yamatai](#) training facility. The concept was to improve the quality of soldier training by providing hands on experience. It is a mobile facility that can take groups of trainees to various environments for their training. It is named after [Taisho Henry Chen](#). The *Henry Chen* has simulators that recreate most common [Star Army of Yamatai](#) ship sections.

## History

The initial design concept for the *Henry Chen* was started in [YE 30](#). With the advent of the [Second Mishhuvurthyar War](#), the development effort was expedited. Some changes were made to the design as a result of the war. It entered service in [YE 31](#).

## Appearance



# Statistical Data

## General

Class: *Henry Chen*-class Training Ship Nomenclature: Ke-L6-1a Type: Science Vessel Designers: [Ketsurui Fleet Yards](#), [Ketsurui Zaibatsu](#), [Star Army Research Administration](#) Manufacturer: [Gemini Star Fortress](#), [Ketsurui Fleet Yards](#) Date entered service: [YE 31](#) Production: TBD

## Crew and Accommodations

Crew: 375 (350 Enlisted, 25 Officers) Passengers: 800 (750 Trainees, 50 Instructors - Warrant officers/Officers) Total capacity: 1175 Emergency Capacity: 2,500 people can fit aboard in an emergency, but the ship would be extremely cramped.

## Dimensions

Length: 360 meters ( 1,180.8 feet) Width: (Fuselage) 120 meters ( 393.6 feet) Width: (Overall) 200 meters ( 656 feet) Height: 60 meters ( 196.8 feet) Decks: 14 (4 meters each)

## Propulsion and Range

### Speeds

- Atmospheric: Mach 5
- Turbo Aether Plasma .3c (~89,937 kilometers per second) (~55,884 miles per second)
- [Combined Field System/Continuum Distortion Drive](#):
  - Minimum: Resting motionless
  - Cruising Speed: 10,000c (~1.144 ly/h)
  - Maximum Speed: 12,500c ( 1.43 ly/h)
- Hyperspace Drive: 394,470c ( 0.75ly/m)

See [Star Army of Yamatai Starship Speeds](#) for a comparison of the *Henry Chen*'s speeds with other ships of the [Star Army of Yamatai](#). This ship is equipped with [Anti-FTL field](#) countermeasures.

## Durability and Maintenance

- Service Lifespan: Estimated 20 years of constant use, although this could certainly be extended.
- Refit Cycle: Frequent minor updates through the [PANTHEON](#) system and a refit once every two or three years.

## Damage Capacity

See [Damage Rating \(Version 3\)](#) for an explanation of the damage system.

Hull: 40 Shields: 40 (Threshold 2)

## Inside the Henry Chen-class Training Ship



Deck	Sections
One	Simulators - Small craft, Ground vehicles
Two	Simulators - Starships
Three	Secondary Bridge, Classrooms, Instructor Wardroom, Ship's Store
Four	Power Armor Bay, Magazine, MEGAMI, Instructor lounge, Trainee Quarters, Laundry
Five	Power Armor Bay, Magazine, Medical Center, Trainee Quarters, Laundry
Six	Trainee Lounge, Trainee Mess & Gallery, Trainee Quarters, Laundry
Seven	Engineering, Primary Bridge, Avionics, Wardroom
Eight	Engineering, MEGAMI, Crew lounge, Ship's Store , Post Office
Nine	Engineering, Crew Quarters, Laundry, Crew Mess & Galley
Ten	Shuttle Bay, Armory, Recreation / Fitness Area
Eleven	Shuttle Bay, Armory, Firearms Training Area, Cargo Bay
Twelve	Fabrication Area, Cargo Bay
Thirteen	Vehicle bay, Armory, Cargo bay
Fourteen	Vehicle bay, Armory, Cargo bay

## Armory

The *Henry Chen* has four [Star Army Armories](#). They are at the following locations:

- Decks four and five outside of the [Power Armor Bay](#)
- Deck thirteen and fourteen outside the starboard vehicle bay.
- Deck thirteen and fourteen outside the port vehicle bay.
- Deck ten and eleven for ship personnel.

## Avionics

The *Henry Chen* avionics are located in the bow on deck seven, and contains the following sensors:

## Passive Omni-directional Sensors

- [Ks-MIES-E3010 - Aether Wave Detection and Ranging System](#)
- [Ks-MIES-E3011 - Wave-front Affinity Resonance Monitoring System](#)
- [Ks-MIES-E3012 - Imaging Array](#)
- [Ks-MIES-E3013 - Subspace Mass Detector](#)
- [Ks-MIES-E3014 - Mixed Sensor Array](#)

## Active Omnidirectional Sensors

- [Ks-MIES-E3020 - Aether Pulse Doppler Rapid Tracking System](#)
- [Ks-MIES-E3021 - Quantum Remote Scanner](#)
- [Ks-MIES-E3022 - Hyperspace Pulse Doppler Detection and Tracking System](#)

## Uni-directional Sensors (Passive)

- [Ks-MIES-E3030 - Forward Sensor Cluster Array](#)

## Bridge

The *Henry Chen* has two [Standard Medium Starship Bridges](#).

- Primary bridge is for operation of the ship; it is located on deck seven.
- Secondary bridge serves as the training command center and in the event of damage to the primary bridge, serves as auxiliary control. The secondary bridge is located on deck three

## Cargo Area

The *Henry Chen* has an extensive [cargo area](#), which contains supplies for trainees, as well repair materials for the ship and its systems. They are stored in a variety of [Standard Starship Cargo Containers](#). The cargo bay is located in the forward sections of decks fourteen, thirteen, twelve and eleven in two deck sections. Exterior doors allow loading into deck fourteen. Cargo elevators allow cargo to be transferred to decks twelve and eleven.

## Classrooms

The *Henry Chen* as a training vessel has classrooms for trainees. They are naturally used to conduct classroom portions of trainee lessons, as well as to review group performance in the simulators. The classrooms have desks with computer terminals built into them for the trainees. They also have a desk for the instructor with volumetric displays, white boards and large LCD display. Classrooms are on deck

three.

## Computer Room

The *Henry Chen* has two [Standard Computer Rooms](#). Each is located under one of the bridges.



## Engineering

The *Henry Chen* has a [Star Army Engineering](#) room except that it is three decks high. It is located aft on decks seven, eight and nine

## Fabrication Area

The *Henry Chen* [Star Army Fabrication Area](#) is restricted to ship personnel or trainees with an instructor. It is located on deck twelve.

## Firearms Training Area

The *Henry Chen* has a Firearm range designed to allow the trainees to gain proficiency with [Star Army of Yamatai](#) most common  [sidearms](#),  [submachine guns](#), and rifles. (See [Star Army of Yamatai small arms](#).)

## Laundry Room

The *Henry Chen* has twenty-four [Standard Laundry Rooms](#). They are located near the various quarter sections on the following decks:

- Deck four has six.
- Deck five has five.
- Deck six has five.
- Deck nine has eight.

## Lounge

The *Henry Chen* has three [Standard Crew Lounges](#). They are located at:

- Deck eight this one is used by the ship crew
- Deck four this one is for use of the instructors
- Deck six this one is the largest and is for trainee use.

## Magazine

The *Henry Chen* has a [Standard Star Army Magazine](#)to store its arsenal of [Ke-Z1 Series Anti-Starship Torpedoes](#). The magazine can store eighteen torpedoes.

## Autoloader

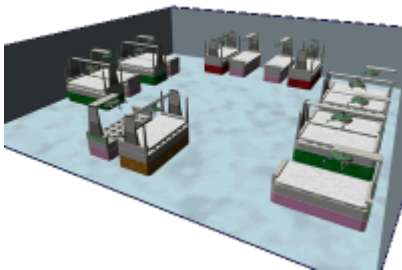
The autoloader is used to transfer the torpedoes from the Magazine, to the Ke-L6-W3100 torpedo arrays. The autoloader system has two tracks for each pylon to transfer torpedoes. One is used for delivering a torpedo and other is a return path for use when changing the torpedo. The autoloader system performs a visual clearance check to ensure that the tracks are unobstructed before moving torpedoes.

## Maintenance Conduits

The *Henry Chen* uses [Standard Maintenance Conduits](#) to allow the crew to maintain the many systems onboard.



## Medical Center

The *Henry Chen* has the first complete [Autonomous Medical Treatment Center](#) installation replacing a standard medical center. It was installed in direct response to the tactic used by the [Mishhuvurthyar](#). It is



located on deck five.

Autonomous Medical Treatment Center		
Quantity	Unit	Image
10	<a href="#">Ke-J1-E3100 - Autonomous Triage Unit (ATU)</a>	
40	<a href="#">Ke-J1-E3101 - Autonomous Nurse Unit (ANU)</a>	
20	<a href="#">Ke-J1-E3102 - Autonomous Basic Medicine Unit (ABMU)</a>	
10	<a href="#">Ke-J1-E3103 - Autonomous Surgical Medicine Unit (ASMU)</a>	

Autonomous Medical Treatment Center		
Quantity	Unit	Image
2	Type 30 Mental Transfer and Backup Unit	
5	Hemosynthetic Reconstruction Tube	

## Mess and Galley

### Galley

There are two large [Star Army Galleys](#). One is for the use of the *Henry Chen* crew. It is located on deck nine. The second galley is used to provide for the trainees and is located on deck six.

### Mess

There are two [Standard Star Army Dining Halls](#) on the ship. One is for the use of the *Henry Chen* crew. It is located on deck nine. The second mess is used to provide for the trainees and is located on deck six.

## Passageways

The *Henry Chen* uses [Standard Passageways](#) for horizontal travel, and [Star Army Zero-gravity Passageways](#) for vertical travel.

## Post Office

The *Henry Chen* has a [Standard Star Army Post Office](#) located on deck eight.

## Power Armor Bay



The *Henry Chen* has a [Standard Star Army Power Armor Bay](#) it accessed by the upper bay on the stern of the ship. It is located on decks four and five.

## Quarters

### Ship Crew

There are 175 [Standard Crew Cabins](#) with seven [Star Army Laundry Rooms](#). They are located on deck nine.

There are 25 [Standard Officers' Cabins](#) with one [Star Army Laundry Room](#). They are located on deck nine.

There is one [Star Army Standard Captain's Suite](#) located on deck nine.

### Trainees

There are 375 [Trainee cabins](#) and fifteen [Star Army Laundry Rooms](#). The trainee cabins are arranged on decks four, five and six with 125 cabins per deck, and five [Star Army Laundry Rooms](#).

There are 50 [Instructor cabins](#) and they share one [Star Army Laundry Room](#) (on deck four). Instructor cabins are arranged as follows; thirteen on decks four and five, fourteen on deck six.

## Recreation / Fitness Area

Located on deck ten of the *Henry Chen* is the recreation and fitness area. This large area is designed to help keep the crew physically fit. The fitness side contains an assortment of exercise machines: weights, treadmills, etc. The other side is for recreation. It is configurable, for various activities; such as group calisthenics, practicing katas, martial art matches, other sports. Due to the size of the *Henry Chen's* compliment, there is an actual running track that surrounds the fitness area.

## Ship's Store

The *Henry Chen* has two [Star Army Ship's Stores](#). One is located on deck three, and the other is on deck eight.

## Shuttle Bay



The *Henry Chen* has a [Star Army Shuttle Bay](#) it is accessed by the lower bay on the stern of the ship. It is located on decks ten and eleven.



## Simulators

Decks one and two of the *Henry Chen* are the simulators. This is where [Star Army of Yamatai](#) trainees who are going to be assigned to starships, receive hands on training on ship simulators. There are control rooms where instructors can monitor the simulators and the trainees. Instructors can also program situations for the trainees to deal with.

### Ship Simulators (Deck 2)

For starships, the simulators consist of working simulations of most common [Star Army of Yamatai](#) ships such as the [Plumeria-class \(2D\) Medium Gunship](#), [Yui-class Scout](#) and [Nozomi-class Scout](#). The simulators typically include bridge, engineering systems as these are the most typical duty locations. When in use, the simulators function in a realistic manner, and are capable of simulating gravity, inertia, combat situations. Thru the use of controlled [Nodal System](#) activity can create realistic battle damage, including minor explosions.

Typical configuration:

- 15 [Plumeria-class \(2D\) Medium Gunship bridges](#) with corresponding [engineering section](#), [computer room](#), and [main cannon junction](#).
- 15 [Yui-class Scout bridges](#) with corresponding [engineering section](#), [computer room](#).
- 15 [Nozomi-class Scout bridges](#) with corresponding [engineering section](#), [computer room](#).

### Small craft simulators (Deck 1)

- 40 [Ke-T7 "Raccoon" Transport Shuttle](#) cockpit and interior.
- 40 [Ke-T8 "Kuma" Multi-role Shuttle](#) cockpit and interior.
- 20 [Ke-V6-1D "Hayabusa" Starfighter](#) cockpit only
- 20 [Ke-V8 "Kawarime" Fighter](#) cockpit only

### Ground vehicle simulators (Deck 1)

- 15 [Type 31 "Troll" Tank](#) interior.
- 15 [Type 30 Tankette](#) interior.
- 20 [Yusou Type 33 Grav-APC](#) interior.
- 10 [Type 30 Akira-class Hoverbike](#)

## Vehicle bay

There are two vehicle bays on the *Henry Chen*. They are two decks high and are located on decks thirteen and fourteen. Adjacent to the vehicle bay on deck is the vehicle maintenance area.

## Wardroom

There are two [Standard Star Army Wardrooms](#). One is used by the officers of the *Henry Chen*. It is located on deck seven. The other wardroom is used for the officers involved with the trainees. It is located on deck three.

## Weapon placements

- [Ke-S3-W2901 Positron Accelerator Cannons](#) are mounted in the ends of the lower pylons.
- 2 [Ke-L6-W3100 Torpedo arrays](#) are mounted in the ends of the upper pylons.
- [Ke-S3-W3101 Type 31 Secondary Anti-Starship Turret](#) are mounted six to a side, distributed roughly amidships.
- [Ke-S3-W3102 Star Army Anti-Fighter Turret, Type 31](#) are mounted four in the bow and four in the stern, six more are mounted to each side between the [Ke-S3-W3101 Type 31 Secondary Anti-Starship Turrets](#).

## Ship Systems

### Armored Hull

The *Henry Chen* gets its armor from the [Ke-L6-H3100 hull](#). The exterior is a 1.25-meter-thick layer of [Yamataium](#) attached to the [Durandium Alloy](#) frame of the ship. All windows on the *Henry Chen* are made of [Transparent Durandium](#). The following areas are reinforced with [Zesuaium](#) for either additional safety or security concerns: Computer rooms, Armories, and the [Magazine](#).

### Combined Field System

The *Henry Chen* uses a [Ke-L6-S3100 Combined Field System](#) of [Ketsurui Fleet Yards](#) design for shields.

### Computer and Sensor Systems

The *Henry Chen* uses the [MEGAMI Integrated Electronics System](#) package and is also equipped with a [Psionic Signal Controller](#). It is also equipped with a [Type 31 Electronic Warfare Suite](#).

### Emergency Systems

The *Henry Chen* contains all [Star Army Emergency Systems](#).

## Blast Shutters

On the *Henry Chen*, blast shutters are located:

- at the entrances to the armories (always locked and closed)
- at the entrance to the bridges
- at the entrance to the computer rooms (always locked and closed)
- at the entrances to engineering
- at the entrances to the power armor bay
- at the entrances to the recreation area
- at the entrances to the wardrooms
- at the entrances to the mess & galley areas
- at the entrances to the shuttle bay.
- at the entrances to the vehicle bays.
- at the entrances to the cargo bays.
- on every deck level in the main passageway and cargo lift shaft (between two and three, etc.)

## Damage Control Stations

There are ten [Standard Damage Control Stations](#) on every deck of the *Henry Chen*.

## Escape Pods

The *Henry Chen* is equipped with 235 [Star Army Escape Pod, Type 30s](#). They are positioned in strategic locations. Trainees are assigned to specific pods as part of the orientation.

## Soul Savior Pod

Due to the size of the compliment aboard the *Henry Chen* it carries three [Soul Savior Pod](#) to provide enough storage capacity.

## Life Support System

The *Henry Chen*'s [Life support systems](#) is of [Ketsurui Fleet Yards](#) design. It is intended to handle the requirements of 1175 [Nekovalkyrja](#) or [Yamtaians](#)

## Cooling System

All major heat-generating pieces of equipment are paired with [Ketsurui Fleet Yards](#) appropriately-sized heat absorbers, which rapidly and effectively absorb thermal radiation and convert it to usable energy.

## Power Systems

The primary power source for the *Henry Chen* is the Ke-L6-G3100 [Aether](#) generator. Secondary power is provided by four Ke-L6-G3101 fusion reactors. Fuel for the reactors is collected by the [Matter Collection System](#) and stored for later use.

## Propulsion

### Distortion drive

The *Henry Chen* uses a Ke-L6-P3100 [Continuum Distortion Drive](#) of [Ketsurui Fleet Yards](#) design for its propulsion. It has no auxiliary engines, the [CDD](#) handles STL and FTL travel.

### Hyperspace Fold

The *Henry Chen* uses a Ke-L6-P3101 hyperspace fold engine of [Ketsurui Fleet Yards](#) design. See: [Hyperspace Travel](#)

## Weapons Systems

The *Henry Chen* is armed to protect the valuable resources it carries.

- 6 [Ke-S3-W2901 Positron Accelerator Cannons](#), mounted 3 to a pylon



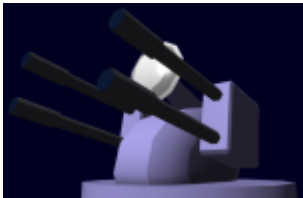
- 2 Ke-L6-W3100 Torpedo Pods. Each has two torpedo tubes, one forward and one rear for [Ke-Z1 Series Anti-Starship Torpedoes](#). An [autoloader](#) system carries torpedoes to and from the ship's [Magazine](#). They are mounted in the upper pylons. The autoloader can deliver a torpedo to the array in one minute.



- 12 [Ke-S3-W3101 Type 31 Secondary Anti-Starship Turret](#) (Tier 11, Medium Anti-Starship)



- 20 [Ke-S3-W3102 Star Army Anti-Fighter Turret, Type 31](#) (Tier 9, Heavy Anti-Mecha) Point defense



## Vehicle Complement

### Power Armor

- 250 [Ke-M2-2D "Mindy II" Power Armor](#)
- 250 [Daisy M6 Infantry Power Armor](#)

### Shuttles

- 15 [Ke-T4 "Fox" Combat Aeroshuttle](#)
- 30 [Ke-T8 "Kuma" Multi-role Shuttle](#)
- 15 [Ke-T7 "Raccoon" Transport Shuttle](#)
  - 10 [Dageki Strike Module](#)

## Fighters

- 40 [Ke-V6-1D "Hayabusa" Starfighter](#)
- 40 [Ke-V8 "Kawarime" Fighter](#)

## Ground Vehicles

- 20 [Type 31 "Troll" Tank](#)
- 30 [Type 30 Cargo Truck](#)
- 30 [Type 30 Container Handling Vehicle](#)
- 30 [Type 30 Tankette](#)
- 30 [Type 30 Akira-class Hoverbike](#)
- 30 [Type 30 Light Utility Truck](#)
- 30 [Type 30 Surface Terrain Vehicle](#)
  - 30 [Cargo STV](#)
  - 30 [Enclosed Surface Terrain Vehicle](#)

## Images

- Top view



- Bottom view



OOC Notes

Star Army Logistics	
Supply Classification	Class A - STARSHIPS
Products & Items Database	
Product Categories	starships
Product Name	Henry Chen-class Training Ship
Nomenclature	Ke-L6-1a
Manufacturer	<a href="#">Ketsurui Fleet Yards</a>

From:  
<https://wiki.stararmy.com/> - STAR ARMY

Permanent link:  
[https://wiki.stararmy.com/doku.php?id=stararmy:starship\\_classes:henry\\_chen-class\\_training\\_ship](https://wiki.stararmy.com/doku.php?id=stararmy:starship_classes:henry_chen-class_training_ship)

Last update: 2023/12/21 01:02

