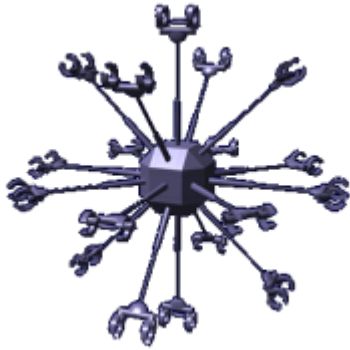


Ke-H5-M3200 "Nesuto" Docking Platforms

The Nesuto (*Nest*) Docking Platforms are part of the "[Guriddo Defense System](#)", and came into service in [YE 32](#).



About Nesuto Platform

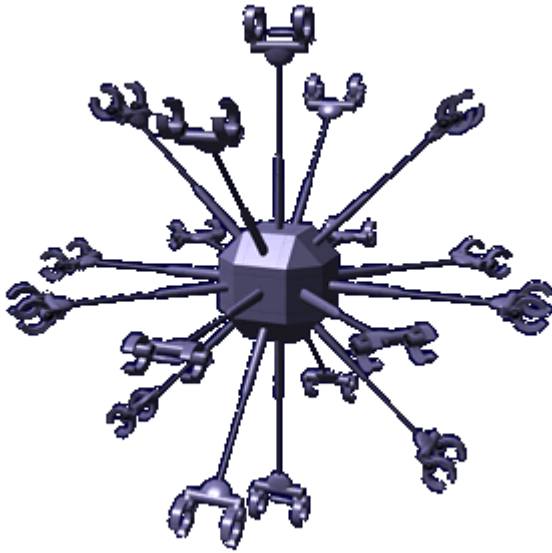
The *Nesuto* Platform was developed to store the [Ke-H5-W3201 "Suzumebachi" Attack Drones](#). Each *Nesuto* has eighteen docking points to hold the attack craft.

History

The *Nesuto Platform* was developed for use with the "[Guriddo Defense System](#)". It was created to fill the requirement of rapid deployment of the attack craft. The earlier concepts resembled large mobile hangars, but they would require all the facilities a living crew would require. When the decision was made to use the [Ke-H5-W3201 "Suzumebachi" Attack Drones](#) the designers realized they could simplify the storage facility by removing all the unnecessary elements and make it an unmanned installation.

Appearance

The core of the *Nesuto* is the command module. From it protrude eighteen docking arms. Each arm is extend-able and ends in the docking assembly. It is colored in the [Star Army of Yamatai](#) blue.



Statistical Data

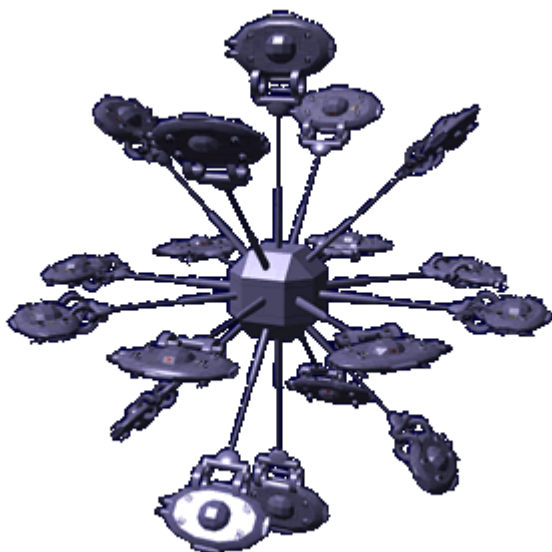
General

Class: *Nesuto* Nomenclature: Ke-H5-M3200 Type: Docking Platform Designers: [Ketsurui Fleet Yards](#), [Takumi](#) Manufacturer: [Ketsurui Fleet Yards](#) Organizations using this ship: [Star Army of Yamatai](#)

Dimensions

Extended Length: 180 meters (590.4 feet) Width: 180 meters (590.4 feet) Height: 180 meters (590.4 feet)

Retracted Length: 90 meters (295.2 feet) Width: 90 meters (295.2 feet) Height: 90 meters (295.2 feet)



Speeds

The *Nesuto* has no propulsion system. For movement to its operation position, the *Nesuto* uses the [Ke-H5-W3201 "Suzumebachi" Attack Drones](#) to maneuver. It can only move at a fraction of their maximum speed.

- Sublight Engines: .2c (~59,958 kilometers per second)

Damage Capacity

See [Damage Rating \(Version 3\)](#) for an explanation of the damage system.

- Structure: 20 SP (Armor)

Nesuto systems

Construction

The *Nesuto* is constructed on a frame of [Durandium Alloy](#) and covered in [Durandium Alloy](#) plates.

Docking Stations

The *Nesuto* has eighteen docking stations for the [Ke-H5-W3201 "Suzumebachi" Attack Drones](#). Once docked the [Suzumebachi](#) become slaved to the *Nesuto* computer system. Each of them are mounted on extending arms that allow the [Suzumebachi](#) to be deployed in less than thirty seconds from secured

mode. When the launch sequence is started, the arms extend which allow all the craft to safely launch without hitting each other.

Aether Generator

The *Nesuto* uses a standard [Ketsurui Fleet Yards Aether Generator](#).

Computer Sensors

The *Nesuto* uses a [Ketsurui Fleet Yards Compact Integrated Electronics System \(CIES\)](#)

From:
<https://wiki.stararmy.com/> - **STAR ARMY**

Permanent link:
https://wiki.stararmy.com/doku.php?id=stararmy:starship_classes:guriddo:nesuto

Last update: **2023/12/21 04:26**

