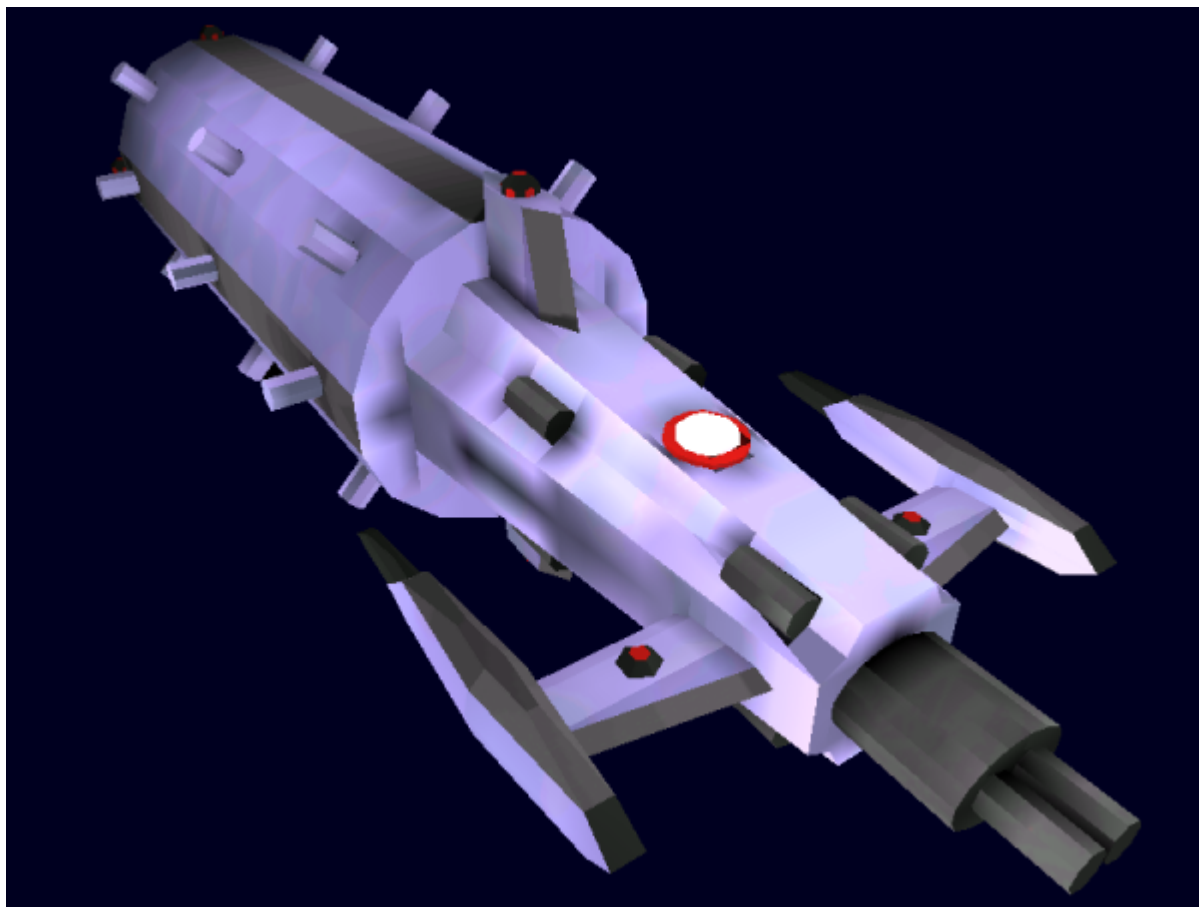


# Ayame Layer-class Logistics Ship

The Ayame Layer is a refitted version of the now obsolete [Ayame-class Cruiser](#); dedicated to logistics, ship transport, and the transport and placement of the [Type 30 City Block](#). It is also an effort to reuse obsolete vessels in a non-combat capacity.



## About the Ship

The original Ayame is a [KFY](#)-built command cruiser which has a docking ring (more of an elliptical shape) designed for lift-based docking with four [Yui-class Scouts](#) and four [Ketsueki-class Escorts](#). This allows for an entire standard-size fleet group to travel together and share resources, as well as eliminating the need for future escort frigates to carry a [Transuniversal Teleportation Drive](#).

When the Ayame entered obsolescence in a combat capacity in YE 30, Shosa [Kage Yaichiro](#) decided to design a refit to use them in a logistics capacity. The number of ships which could be hauled was upgraded to 18, the ship was given the ability to carry a large amount of cargo, and its weapons and propulsion were redesigned and simplified.

A main use, however, was to transport and lay individual city blocks under a new civic construction program.

## Key Features

Other than being able to carry a massive amount of items, this ship can tow up to 18 vessels attached to it, and even carry a [Type 30 City Block](#). Some of the more complex systems have been traded down to more plentiful and easier to produce systems to reflect its non-front line system.

## Mission Specialization

This ship is often used to transport and lay Type 30 City Blocks, tow large numbers of ships, and transport for logistics.

## Laying of City Blocks by the Ayame Layer

This new type of ship use and cargo have required a new method to be developed to place these city blocks with the Layer. After much consideration, it was decided that the following method would be used:

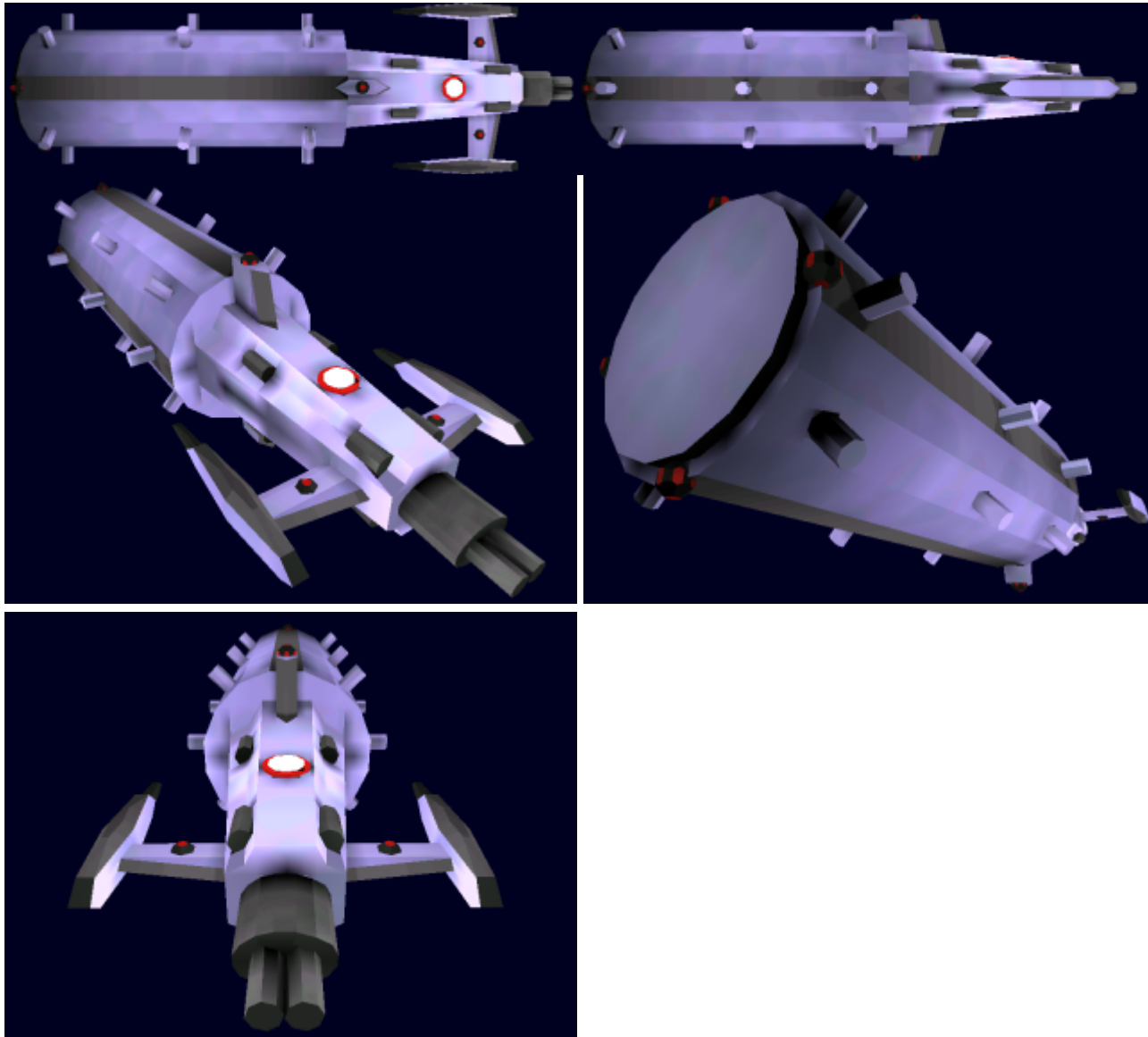
The city blocks, empty of furniture or living things, would be transferred from the Anri they were built on to the Ayame Layer by way of the Ayame Layer's graviton beam projectors. The top of the building would be situated toward the front of the ship, and held in place with more gravitational control systems as the Ayame Layer entered the new planet's atmosphere.

Upon nearing the surface of the planet, the Ayame Layer would rotate in mid air until the rear of the ship was pointed directly at the ground. This resulted in the ship hovering perpendicular to the ground. The Ayame Layer would then use its Ground Cutter laser system to cut into the ground and rock below, and use its very fine control graviton beam projectors to pull soil and rock from the worksite, while also preventing more soil from falling in. The excess soil is carried to a nearby alternate site, a temporary soil quarry point, for later reuse. Often this is so close, that the ship need not even move from its position the entire time.

After the work site is cleared; the Ayame Layer would rotate the building around its vertical axis while still inside the ship until it was properly aligned, and use its gravity control systems to lower it into the hole. Once complete, the city block would be stabilized by being buried in the used soil up to the third sublevel, and more city blocks would be laid.

Once the city blocks of a city are in place and the water table is varified as being in expected parameters, they are activated and the connections between them on the second sublevel are made. At that point, the city's sublevels are buried the rest of the way and packed down into stable ground. After a final check; the city is now ready for furniture to be put inside, plant life to be grown, and inhabitants to be brought in.

## Appearance



## History and Background

Through the [PANTHEON](#) system, all Ayame ISFC were upgraded to the 1b specifications in [YE 25](#), soon after the discovery of the [Tami System](#) System by Taisho Alexis Jaren and her Third Expeditionary Fleet. The 1b added a large mecha complement, weaponry, and internal security systems to the cruiser. In late YE 25, the class was named Ayame after newly-promoted Taisho [Ketsurui Ayame](#) of the [Third Expeditionary Fleet](#).

The most famous example of the Ayame class is the the [YSS Celia](#), commanded by [Kai Ashigari](#) (where he was assassinated), and later by Taisho [Henry Chen](#).

In [YE 30](#), the Ayame was rendered obsolete and the Ayame Layer was designed, to utilize the old parts and ships for a new civic works program.

In [YE 37](#), the [Star Army of Yamatai](#) determined this ship was no longer worth updating and have begun to

phase them out of service.

# Statistics and Performance

## General

- Class: Ki-C1-1D
- Type: Logistics Ship (City Block Layer, Ship Tower, Cargo Ship)
- Designers: Ketsurui Yui (Original Ayame), [Kage Yaichiro](#) (Layer refit)
- Manufacturers: [Ketsurui Fleet Yards](#) at [Albini](#), [Midori No Umi](#), Iori Star Fortresses (KFY)
- Fielded by: Star Army of Yamatai, Yamatai Star Empire

## Passengers

- Crew: 120
- Maximum Capacity: 800 (many more if using layer bay)

## Dimensions

- Length: 2000 feet (609.6 meters)
- Width: 800 feet (243.84 meters)
- Height: 400 feet (121.92 meters)
- Decks: 33

## Performance

Category	Starship Type	Class	Sublight Engines	Distortion Field	Hyperspace Drive
1	Standard Warships	Ayame Layer	.375c	18,750c	394,470c (0.75 ly/m)
1	Under Full Load	Ayame Layer	.3c	12,500c*	394,470c (0.75 ly/m)

See: [Star Army of Yamatai Starship Speeds](#)

- Speed (Atmospheric): Mach 1
- Landings: Water only. VTOL. Can hover indefinitely. Can land or hover parallel or perpendicular to ground.
- Maximum Range: Effectively Unlimited.
- Lifespan: Estimated 20 years
- Refit Cycle: Every five years, with frequent automatic minor upgrades though the PANTHEON system.

\*This large reduction is due to the expansion of the CFS to contain ships being towed by the Ayame Layer.

## Damage Capacity

- Hull: 30
- Shields: 30 (Threshold 3)

## Inside the Ayame

The interior of the Ayame-class is based on that of the original [Yui-class Scout](#), and has become somewhat vintage. Onboard, accommodations are small, but comfortable, with the crew living communally in soft pits called nests. Furniture is sleek and ergonomic, designed to fit Nekovalkyrja. This has been retained in the Ayame Layer.

## Deck Layout

The Ayame has 33 decks, plus a massive Layer Bay in the rear.

Deck	Compartments
<b>1</b>	Upper Docking Port
<b>2-4</b>	Upper Pylon for Docking Ring
<b>5</b>	Command Bridge; Upper Pylon Begins
<b>6</b>	Main Bridge, Executive Shuttle Bay
<b>7</b>	Officers' Quarters, Wardroom, Officers' Armory
<b>8</b>	Medical Bay
<b>9</b>	Main Shuttle Bay
<b>10</b>	Enlisted Quarters
<b>11</b>	Enlisted Quarters, Personnel Armory
<b>12</b>	Reserved
<b>13</b>	Prisoner Storage
<b>14</b>	Structural Reinforcements (not accessible to personnel)
<b>15</b>	Structural Reinforcements (not accessible to personnel)
<b>16</b>	Main Engineering Upper Level
<b>17</b>	Main Engineering
<b>18</b>	Main Engineering Lower Level
<b>19</b>	Recreation Deck, Mess Hall
<b>20</b>	Recreation Deck
<b>21</b>	Environmental Processing Level
<b>22</b>	Upper Cargo Bay (Smaller, ready supplies)
<b>23-24</b>	Main Cargo Bay
<b>25</b>	Power Armor Armory Deck
<b>26</b>	Power Armor Storage and Maintenance, Fabrication Center

Deck	Compartments
27	Power Armor Storage
28	Power Armor Launch Bays and Ready Armory
29	Lower Docking Pylon Begins
30-32	Lower Pylon for Docking Ring
33	Lower Docking Port

## Compartment Layouts

### Armory

See: [Standard Star Army Armory](#)

### Bridge

As the control center of the ship, the bridge has all the necessary stations in it: Tactical, Defensive Systems, Navigation, Science, Communications, and Operations (the Captain's). Indented into the floor are the pilots' pits, totally immersive control environments. Pilots fly the ships using an advanced neural interface. The cockpits are usually reserved for combat situations, as the ship's computer handles most flight ops. The basic layout of the bridge stations can be seen below (with the top of the chart representing the front of the bridge/ship). Given the nature of the displays, the control stations can be used for alternate functions if necessary. The bridge chairs, as well as the larger recliners in the briefing room, provide footrests.



### Crew Quarters

The Ayame's standard quarters are small and simple, filled by [Traditional Nekovalkyrja Nests](#).

### Dining Hall

The Ayame features a large, self-service mess hall, with long benches, automatic beverage dispensers, and buffet-style tables carrying large, communal dishes. There is a large, fully equipped kitchen adjoining the mess hall. The dishes offered vary wildly in style and cultural influences, and are meant to please as many palettes as possible.

Meals are served during regular meal times. Made-to-order dishes could be requested during off-peak hours, if there is still a cook on duty. Even when no one is on duty in the kitchen, plenty of snacks and beverages are available. One would expect to find at least a few off duty crewmen inside the mess hall during all hours of the day.

## Medical Bay (Crew)

The Ayame contains a well-equipped medical bay includes all the typical resources available to typical Yamataian vessels, such as nodal support for the creation of medicines and tools, hemosynthetics tanks which are used to create new bodies and organs, and ST/SS machines which provide crucial storage of "soul data". The unusual commodities of this medbay include far more extensive tools geared toward implanting of various cybernetic and electronic equipment. Between each of these features is a collapsible wall which provides privacy and when properly sealed, prevention of contamination.

## Passageways

There are many hallways, which run from from the front to the rear of the ship, connected by occasional passageways across and by a system of elevators. Control panels in the halls can give the crew status-updated maps should they need them. The other way of moving from place to place on board the ship is to use the network of access shafts and crawlways which run the length of the ship. Technicians often hang out in these tubes.

## Recreation Deck

Contains a large heated swimming pool, a gym, and a sparring room.

## Science Bay

Unlike most Star Army ships, the Ayame class has been granted a seperate research bay which is equiped in much the same manner as a typical medbay, but is complemented with far more advanced sensor equipment and sample storage.

## Ship Systems

System	Quantity	Manufacturer	Type	Model
Main Power System	2	KFY	Superuniversal Energy Generators	KiP-d2431su
Secondary Power System	6	KFY	Quantum Generators	KiP-d2400q
Auxiliary Power System	8	KFY	Aetheric Energy Generators	KiP-d2401zp
Emergency Power	6	KFY	Supersolenoid Reactors	KiP-d2402ss
Continuum Distortion Drive	2	KFY	Combined Distortion Drive	Ke-C1-P2900
Transuniversal Teleportation Drive	1	KFY	Transuniversal Teleportation Drive	AvaNet Type B5
Auxiliary Sublight Engines	6	KFY	Ion/Graviton Engines	KiE-d2404i/g
Maneuvering Thrusters	8	KFY	Thruster clusters	KiMT-d2405mt
Anti-Gravity System	1	KFY	Inertial Redirection System	KiFRS-c2433ag

System	Quantity	Manufacturer	Type	Model
Anti-Gravity System, Internal	1	KFY	Force Stabilizer	KiFRS-c2434ag(i)
Radiator System	6	KFY	Heat Exchanger System	KiC-d2409

## Armored Hull and Hull Integrated Systems

### Hull

The key substance that makes up the hull armor of the ship is [Zesuaium](#). The frame of the ship is Zesuaium, and the armor plates are made of Zesuaium coated Titanium Boron Carbide]]. By using only thin layers of Zesuaium armor to fortify lightweight metal ceramics, weight is kept low. Windows are made out of a special transparent Zesuaium which does not block visible light. Zesuaium's main vulnerability is to antimatter weapons.

In addition to their Zesuaium-reinforced hull plating, Integrated Strike Force Cruisers have to ability to deploy 50cm of heavy armor over the entire hull of the ship, including areas normally exposed such as the CDD, thrusters, and sensors. When the armor takes damage, it flakes away in a controlled manner (ablation), absorbing the destructive force. The armor can then be repaired using hemosynthesis, making the armor self-regenerative. A combined Photonic/Gravitonic field further protects the armor.

### Hull Integrated Systems

Lift The lift provides quick access from the main deck to the subdeck. The lift can also be used to travel to other ships when vessels link together (most Star Army ships have standard gauges of lift systems, allowing lift cars to move from ship to ship). The lift system of the ISFC is somewhat unique in that the lift cars also travel sideways through the docking ring to the eight lift connection points.

### Layer Bay Extension

Unlike the main Ayame, the appended module which replaces the Docking Ring is made of Yamataium. Able to contain a large volume, and over doubling the length of the Ayame when refitted into the Ayame Layer, the Layer Bay Extension has several roles.

### Layer Bay Components

#### Layer Bay

The Layer Bay is massive cargo bay with internal gravity and atmosphere control. When carrying a city block, there is no gravity, but all sides have gravity when it is used for general cargo. This allows all walls of the Layer Bay to be utilized as storage space.

#### Docking Cylinder



The Docking Cylinder can carry up to 18 ships, allowing the Ayame Layer to act as a tow-ship for many other vessels. Its CFS is capable of extending over these other ships, though at a considerable cost of FTL speed.

## Computers and Electronics

### MEGAMI

See: [MEGAMI Integrated Electronics System](#)

### Graviton Beam Projector (12)

See: [KFY Graviton Beam Projector](#)

Ten heavy-duty Graviton Beam Projectors, in addition to the normal two on the Ayame, are used for various purposes. They can be used to position the ship perpendicular to ground, lower/raise/rotate city blocks, or secure ships while they dock onto the Docking Ring.

### Conformal PSC Device

See: [Psionic Signal Controller](#)

## Emergency Systems

### Escape Pods

30 KFY Type [KiS-2408es Escape Pod](#) escape pods, each able to hold up to four people, are located on board.

## Life Support Systems

See [Hemosynthetic Conduit System](#)

The ship has a very thorough recycling system, tied into HSCS-2, which breaks down anything classified into “waste” into its atomic components. The air recycling system (which is segmented and highly monitored for security reasons) can support up to 800 NH-29 personnel up to twenty years (the KFY recommendation, however, is to replenish it at least every six months). Water can be recycled for twenty years as well.

## Propulsion

### Combined Field System

See: [Combined Field System](#)

The individual shielding and stealth systems have been removed and replaced with a general CFS for cost effectiveness, as well as to maximize the parts available. The bells and whistles of a cruiser are not necessary on a logistics ship. With the emitters and the computing power existing on the ship, this conversion needs no more hardware, and frees up space within the ship.

### Hyperspace Fold Drive

A quick way to get from point A to point B. The [Pizza](#) delivery guy used it to get to the party in less than a minute. Unfortunately, the molten cheese burned some dude's chin pretty bad because it was still hot. The fold drive is capable of moving the ship through hyperspace at speeds up to 5 light-years a minute. Time, however, does not move the same for those on the ship as for those in "real" space, which can make a seemingly short trip take a long time.

### Matter Collection System

See: [Hydrogen Collection Matrix](#)

The MCS allows the ship to collect hydrogen molecules as it travels through space, which can be used to provide fuel or converted into higher elements for use in the HSCS. The MCS units can be shielded in combat with cover plates.

### Self-Destruct

Although the Ayame lacks a dedicated self destruct system (primary for space efficiency reasons), the ship can be destroyed from the monitor room by deliberately overloading the generator and capacitor system. The process takes only a few seconds and results in an aether energy explosion powerful enough to totally destroy the ship (and anything within 2500 km).

## Shield Systems

### Combined Field System

See: [Combined Field System](#)

## Weapons Systems

- [heavy\\_energy\\_cannon](#): 2, DR 4
- [Anti-Neutron Turrets](#): 8, DR 3
- [Star Army Weapons Pods](#): 720, DR 1
- [KFY Ground Cutter](#): 8, DR 1

## Vehicle Complement

- Ke-T2 (3) Aeroshuttle
- Ke-T1 (4) Short Range Shuttle
- Ke-M1-1c (100) Space Mecha for NH-12
- Ke-M1-2b (400) Low-cost Space Mecha for NH-12

## OOC Notes

Star Army Logistics	
Supply Classification	Class A - STARSHIPS
First Used	<a href="#">YE 25</a>
Last Review	<a href="#">YE 37</a>
Year Retired	<a href="#">YE 37</a>
Products & Items Database	
Product Categories	starships
Product Name	Ayame Layer
Nomenclature	Ki-C1-1D
Manufacturer	<a href="#">Ketsurui Fleet Yards</a>

From:

<https://wiki.stararmy.com/> - **STAR ARMY**

Permanent link:

[https://wiki.stararmy.com/doku.php?id=stararmy:starship\\_classes:ayame\\_layer](https://wiki.stararmy.com/doku.php?id=stararmy:starship_classes:ayame_layer)

Last update: **2024/03/02 14:33**

