

Star Army Escape Pod, Type 35 "Seizonsha"

The *Type 35 "Seizonsha" Escape Pod* was the first new escape pod design since [YE 30](#). It was developed by [Ketsurui Fleet Yards](#) in late [YE 34](#), and fielded in [YE 35](#). It proved popular and served for many years, so much so that it has a variant for the [NH-33M \(Miniature\)](#) and other future 'mini-Neko' called the *Star Army Escape Pod, Type 41 "Kodate"*.

About and History

The [Star Army Escape Pod, Type 30](#) served the [Star Army of Yamatai](#) for many years, however advancements in technology and improved modular designs left it under-equipped to service the needs of Star Army vessels and bases going forwards.

At the end of [YE 34](#), a new design was submitted to [Ketsurui Fleet Yards](#) by [Taisho Ketsurui-Motoyoshi Katsuko](#) and was tested and approved for fielding in the upcoming year, [YE 35](#). It would be used on all new starships and bases, with upgrades scheduled at regular refit intervals for those vessels and bases already in service.

The new escape pod features improved stealth and FTL systems for improved escape ability. It also has a small cargo compartment with survival gear in case the pod is forced to land and the occupants are forced to survive in a planetary environment until rescue.

This escape pod would serve for even longer than the pod it replaced, and still see new variants like the *Star Army Escape Pod, Type 41 "Kodate"* fielded based on its tried and true design.

Design Goals

The goal was to provide a comparable model to the [Ge-X3300 - Type 33 Escape Pod](#) for military use, and similarly taking advantage of utilizing modular systems from the [Ke-T8 "Kuma" Multi-role Shuttle](#). However, the Type 35 model would only have a capacity for five under normal conditions, in favour of having a small cargo locker.

Namesake

Seizonsha (本部長) means "Survivor" in [Yamataian](#).

Appearance

The craft is a rounded locker-like container that is grey with purple on its assorted panels. It has lights between its panels, and a much larger light on one side along with the [Star Army Hinomaru](#). It has four

blue-white thrusters on the bottom as well.



General Statistics

- Type: Escape Pod
- Class: Type 35 “Seizonsha (本部長)” Escape Pod
- Nomenclature: Ke-X3500
- Designers: [Ketsurui Fleet Yards](#)
- Manufacturer: [Ketsurui Fleet Yards](#)
- Production: Mass Production
- Fielded by: [Star Army of Yamatai](#)

Dimensions

- Length: 4.2 m
- Width: 3.0 m

Personnel

- Standard Capacity: 5
- Emergency Capacity: 7

Propulsion Performance

In terms of propulsion functions, the *Type 35 "Seizonsha" Star Army Escape Pod* follows the [Star Army of Yamatai Starship Speeds](#).

- STL: 0.2c (~59,958 kilometers per second) (~37,256 miles per second)
- CFS: 0.00c to 730c (2 ly/d)
- Fold: 131,490c (0.25 ly/m)
 - *Range*: 20 LY per jump
 - *Charge Time*: 30 minutes from capacitors, 15 minutes if Aether Generator is online.

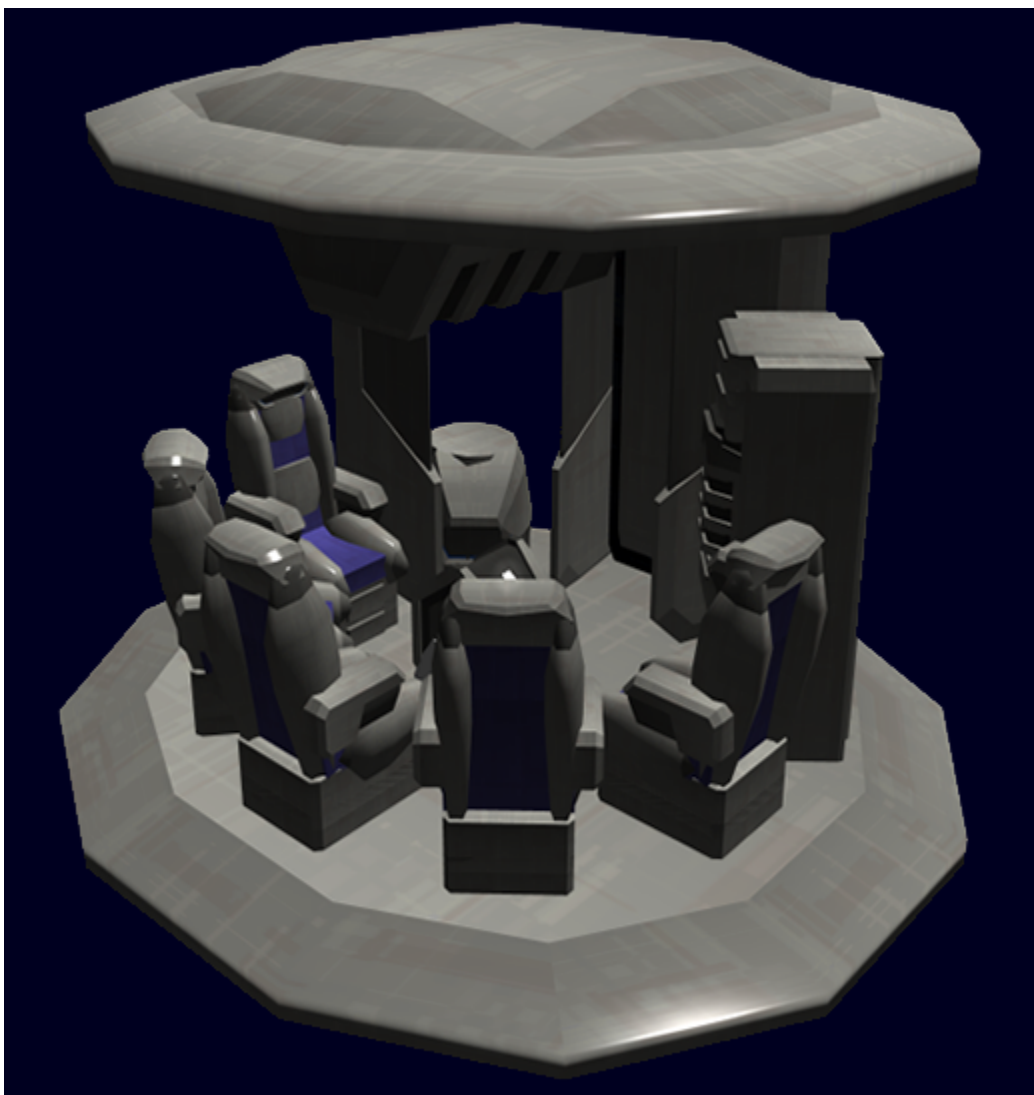
Damage Capacity

See [Damage Rating \(Version 3\)](#) for an explanation of the damage system.

- Tier: 6, ([Heavy Armor](#))



Inside the Type 35 "Seizonsha" Star Army Escape Pod



Interior enlarged to show detail

The interior of the *Type 35 "Seizonsha" Star Army Escape Pod* is designed for efficiency. It has more cargo room than the [Ge-X3300 - Type 33 Escape Pod](#) but only has seating for five people. The seats are comfortable and padded, designed for what can sometimes be a lengthy flight, depending upon rescue resources. The central console provides manual control solutions and volumetric projection options. Chairs each have a removable storage unit under them, as well as overhead (not visible in picture - smaller than the Geshrinari Shipyards version.). There are also two additional storage areas, one large overhead compartment, and a cargo locker opposite of the chemical toilet which frame the hatchway.

Systems

The *Type 35 "Seizonsha" Star Army Escape Pod*, like any other craft, has assorted systems necessary for its function.

Seizonsha Hull and Frame

The *Type 35 "Seizonsha" Star Army Escape Pod* has a [Yamataium](#) frame and armoured plating and is coated with [Xiulurium](#) stealth armor.

Computer


The *Type 35 "Seizonsha" Star Army Escape Pod* uses the [Ke-T8-E3103 Computer Array](#).

ESS

The *Type 35 "Seizonsha" Star Army Escape Pod* is equipped with the same [Emergency Soul Savior System](#) as its predecessor, the [Star Army Escape Pod, Type 30](#).

Communications

All communications use the [Type 33 Star Army Communications Network Encryption System](#).

The *Type 35 "Seizonsha" Star Army Escape Pod* has a low powered [Subspace Communications](#) system capable of transmission up to 30 LYs as well as standard [Radio](#) communications. The radio is capable of  [frequency-hop](#) and multiple-channel transmission/reception.

Sensors

The *Type 35 "Seizonsha" Star Army Escape Pod* utilizes the [Ke-T8-E3100 Basic Sensors Package](#).

Controls

All seats in the *Type 35 "Seizonsha" Star Army Escape Pod* have a [SPINE](#) interface for control, manual controls are also present.

Aether Generator and Capacitor System

The *Type 35 "Seizonsha" Star Army Escape Pod* utilizes a small briefcase-sized [Aether Generator](#) and capacitor system.

When in *dock mode*, the aether reactor activates as needed to charge the capacitors which hold a charge that can operate the pod for up to four hours. During *launch* the stored energy is utilized and the generator remains offline so that the pod is harder to detect, once in more secure space the generator

will activate long enough to charge the capacitor system again. The capacitors are located in the small overhead systems compartment.

Low-Output CFS

The *Type 35 "Seizonsha" Star Army Escape Pod* utilizes a low-output [Combined Field System](#) for propulsion, defense and stealth.

Propulsion

The *Type 35 "Seizonsha" Star Army Escape Pod* has assorted forms of propulsion for deployment, STL, FTL, and Fold.

Launch System (Larger Vessels and Star Fortresses)

On larger starships and fortresses, the *Type 35 "Seizonsha" Star Army Escape Pod* is fired via a electromagnetic launch system that acts as a low powered railgun. It fires the escape pod at nearly 3000 m/s in a controlled egress. The field system can be powered by the ship or the pod. In a situation where this launch system is unavailable, the escape pod can launch using its ion thrusters.


Turbo Aether Plasma Drive

The *Type 35 "Seizonsha" Star Army Escape Pod* can utilize four compact [Turbo Aether Plasma Drive](#) drives when its aether generator is online for sub-light propulsion.

Fold Drive

The *Type 35 "Seizonsha" Star Army Escape Pod* has a compact [Ke-T8-P3102 Hyperspace Fold Module](#). It has a maximum range of 20LY per jump and takes 30 minutes to recharge when pulling only from the capacitor system and 15 minutes to recharge if the aether generator is brought online.

Ion Thrusters

The *Type 35 "Seizonsha" Star Army Escape Pod* utilizes simple  [Ion Thrusters](#) for attitude control.

Environmental

The *Type 35 "Seizonsha" Star Army Escape Pod* utilizes [Star Army Standard Life Support Systems](#) to

maintain its occupants.

Airlock Hatch

The *Type 35 "Seizonsha" Star Army Escape Pod* external airlock and hatch system utilizes standard [Star Army of Yamatai](#) gauge hatch and airlock fittings. It also is equipped with an atmospheric forcefield so that the hatch may be utilized without the loss of internal atmosphere.

Landing Gear

The landing gears of the *Type 35 "Seizonsha" Star Army Escape Pod* are telescopic drop leg structures that are normally not visible as they retract up and into the body of the pod.

Self-Inflating Raft

In the event of a water landing the *Type 35 "Seizonsha" Star Army Escape Pod* has two [Star Army Nekovalkyrja Nest/Life Raft, Type 40](#), in addition to the same self inflating raft system that was installed on previous [Star Army of Yamatai](#) escape pods.

Supplies

Like many escape pods, the *Type 35 "Seizonsha" Star Army Escape Pod* is equipped with supplies to ensure the survival of its occupants until rescue.

Under Seat Storage Units

- 1 x Wool Blanket
- 1 x [Flashlight, Floating, Type 32](#)
- 10 x [Star Army Field Rations](#)
- 1 x [Star Army Working Uniform, Type 31](#)
- 1 x [Star Army Utility Belt, Type 32](#)
- 1 x [Type 34 Multi-Function Bracelet](#)
- [Star Army Undergarments](#)

Above Seat Storage Units

- 15 gallons of [Water](#)
- 1 x [Star Army Environmental Suit, Type 28 \(AMES\)](#)
- 1 x [Star Army Datapad, Type 33](#)

Cargo Locker

This is equipment generally used if the pod lands on a planet.

- 5 x [Star Army Backpack](#)
- 5 x [Star Army Science Scanner, Type 31](#)
- 5 x [Star Army Toiletry Kit](#)
- 5 x [Flashlight, Floating, Type 32](#)
- 5 x [Star Army Survival Kit, Type 31](#) - 31A Type
- 1 x [Star Army Trauma Kit, Type 32](#)
- 5 x [Star Army First Aid Kit, Type 32](#)
- 5 x [Nekovalkyrja Service Pistol, Type 33](#)

Overhead Storage Compartment

This is equipment for landings, making shelters, and other miscellaneous.

- 2 x [Star Army Portable Shelter, Type 30](#) - 4 person version.
- 5 x [Sea Survival Kit](#) - in the event of water landing.
- 5 x [Desert Survival Kit](#) - in the event of desert landing.
- 3 x [Star Army Medical Kit, Type 31](#)
- 2 x [Portable Repair Kit](#)
- 1 x [Military Cleaning Kit, Type 33 \(SAOY/DION\)](#) and Various [Star Army Chemicals](#)
- 1 x ["Mobile Spanner" Drone](#)

OOC Notes

This page was originally created on 2012/12/11 03:37 by [Andrew](#). Updated version based on new data and wiki formatting created on 2019/4/6 21:07 by [Toshiro](#).

[Approved](#) on 2019/4/14 by [Alex Hart](#)

Star Army Logistics	
Supply Classification	Class B - SMALL CRAFT
First Used	YE 35
Products & Items Database	
Product Categories	small craft
Product Name	Escape Pod, Type 35 "Seizonsha"
Nomenclature	Ke-X3500
Manufacturer	Ketsurui Fleet Yards

From:

<https://wiki.stararmy.com/> - **STAR ARMY**

Permanent link:

https://wiki.stararmy.com/doku.php?id=stararmy:small_craft:type_35_escape_pod

Last update: **2024/04/06 18:48**

