

# Ke-T7 "Raccoon" Transport Shuttle

The "Raccoon" is a low-cost, good-performance shuttle. It is produced by [Ketsurui Fleet Yards](#).



Price: 20,000 KS for the base model.

## History

The Ke-T7 "Raccoon" was designed in [YE 30](#) to replace the [YE 24 Ke-T3 "Lion" Transport Shuttle](#) as a main infantry platoon transport craft in the [Star Army of Yamatai](#), and replaced the [Jilanth T2 Military Shuttle](#) as the Star Army's main "fast shuttle."

Following a problematic situation in [43.6](#), during a rescue mission by the [YSS Resurgence](#), 10 [spacesuits](#) were added to the standard emergency supplies carried on all Star Army T7 shuttles.

## About the Raccoon T7

The Raccoon T7 is distinctive because it is the first "Fast Shuttle" ([Speed Category 7](#)) built by [Ketsurui](#)

**Fleet Yards.** It includes powerful engines, field systems and the ability to carry a small hyperspace fold drive.

The Raccoon can also dock with most ships using a variable-diameter hatch (on its aft dorsal surface) or it can simply use the rear loading ramp if a landing spot is available.

## Mission Specialization

The Raccoon T7 is best suited for the following mission types:

- Local Transport (ship to ship, ship to planet, and planet to ship)
- Interstellar Transport (with hyperspace module)
- Special Operations (Stealth variant)

## Variations

The Raccoon comes in several variants:

- Ke-T7-1A: Standard (no hyperspace fold system installed)
- Ke-T7-1B: Long Range (with hyperspace fold system installed)
- Ke-T7-1C: Stealth (Xiulurium armor kit installed) - *This variant is rare*

## Appearance

The shuttle consists of a tapered rectangular main body with two slight angled engine nacelles attached to the sides. A docking hatch is found on the top rear of the craft and a cockpit window on the sloped dorsal front.



## Statistics and Performance

### General

- Class: Ke-T7-1A
- Type: Shuttle
- Designers: Ketsurui Fleet Yards
- Manufacturer: Ketsurui Fleet Yards, [Gemini Star Fortress](#)
- Production: Mass Production
- Fielded by: [Star Army of Yamatai](#)

### Passengers

Crew: 2 operators are recommended, but only one is required. There are accommodations for 52 people (2 pilots, 48 passengers, and 2 additional crew)

### Dimensions

- Length: About 11.5 meters (37.73 feet)
- Width: About 8 meters (26.25 feet)
- Height: Just over 2 meters (6.56 feet)

- Decks: 1

## Propulsion and Range

Category 7 (See: [Star Army of Yamatai Starship Speeds](#))

- Continuum Distortion Drive: 18,750c (~2.14 ly/h)
- Hyperspace Fold Drive: 262,980c (0.50 ly/m) - *Ke-T7-1B and Ke-T7-1C models only*
- Sublight Engines: .375c (~112,422 kilometers per second)
- Range: Limited only by crew supplies.
- Lifespan: 20+ Years
- Refit Cycle: Once every 5 years

## Inside the Shuttle

### Cockpit Area

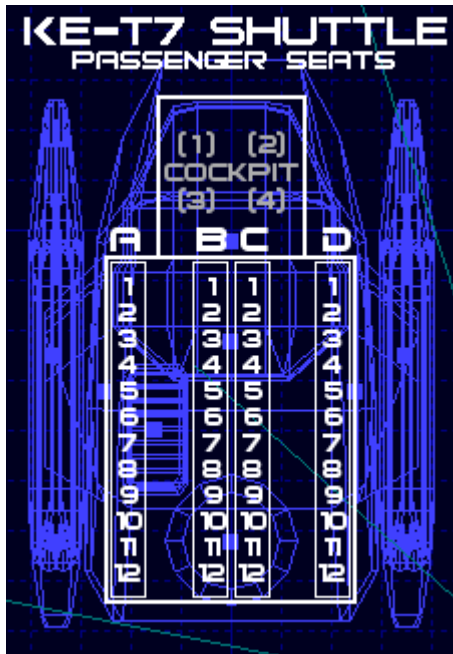
Contains two side-by-side control stations for piloting the craft. Two additional computer stations also sit behind the pilots. A [SPINE](#) interface available for all four chairs. The cockpit area is accessed through one of two airtight doors leading into the transport area. These doors are on either side of a column in the center that contains the ship's hyperspace fold system. The cockpit area also contains a storage area forward of the controls, used to keep the shuttle's emergency supplies:

- 200 Gallons of [Water](#)
- 5 [Type 31B Large-Size Survival Kits](#)
- 5 [Type 35 Body Bags](#)
- 10 [Type 31C Medical Kits](#)
- 10 [Star Army Environmental Suit, Type 28 \(AMES\)](#)

To access the supplies, unlock and remove the labeled panel at the front of the cockpit area walkways. The water has a dispenser and cups.

### Transport Area

Note: Both the rear door and the docking hatch are equipped with an air-containment force-field.



## Cargo Configuration

Seats are all folded away; cargo containers or palettes are secured to the floor with thick red straps. Can fit 4 [Light Utility Trucks](#) (2×2).

## Passenger Configuration

12 seats line each side wall facing outward (not forward) and two more rows of 12 seats face back-to-back along the shuttle's centerline.

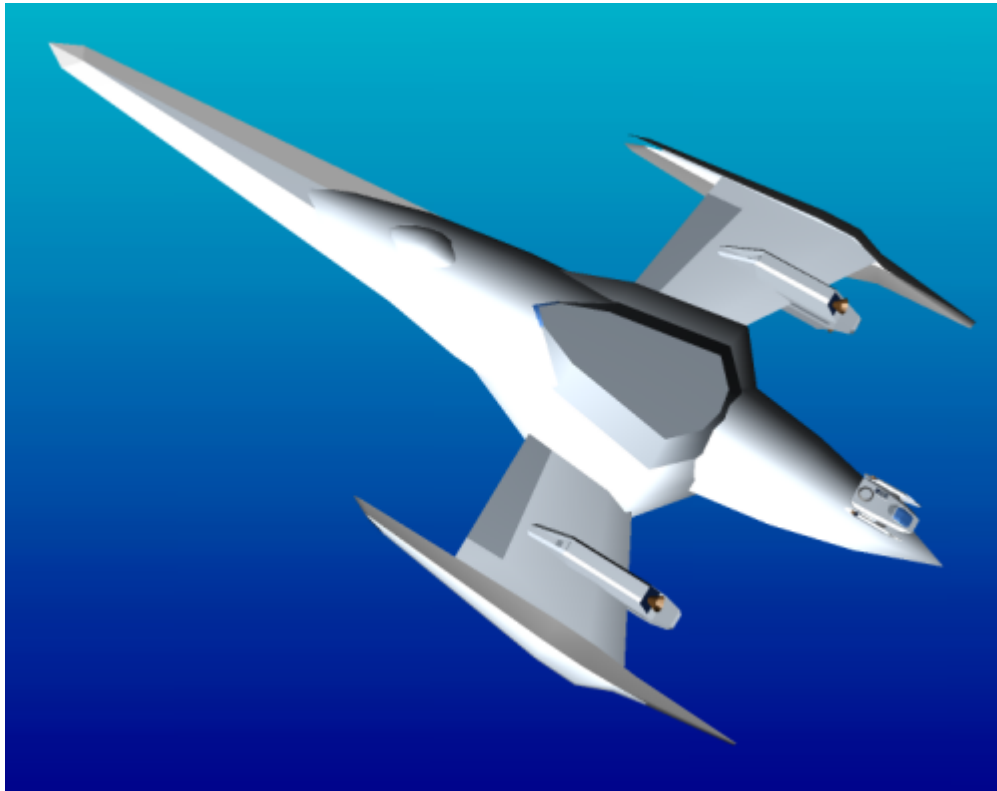
## Power Armor Configuration

12 seats line each side wall facing outward (not forward) for a total of 24. The center area is taken up by power armors, piled and secured to the floor with thick red straps. 2 [Light Utility Trucks](#) can be substituted for the power armors (or placed under them, but this would be extremely crowded).

# Systems

- [Aether](#) Generators
- Artificial gravity system for cockpit area and for transport area (separate)
- Chaff/Flare Dispensers
- [Compact Integrated Electronics System \(CIES\)](#)
- [Combined Field System](#)
- [Durandium Alloy](#) unibody hull construction. [DR 12](#).

- Emergency Homing Beacon (must be manually activated)
- [Hyperspace Fold Drive](#) on Ke-T7-1B and Ke-T7-1C
- [Psionic Signal Controller](#)
- [Star Army Standard Life Support Systems](#)
- [Stealth armor](#) only available on Ke-T7-1C Variant (rare)
- No weapons (except for the CFS).



Comparison with [Plumeria-](#)

[class \(2D\) Medium Gunship](#)



OOC Notes

Authored and approved by [Wes](#) on November 29, 2007<sup>1)</sup>

Star Army Logistics	
Supply Classification	Class B - SMALL CRAFT
Products & Items Database	
Product Categories	small craft
Product Name	Raccoon Transport Shuttle
Nomenclature	Ke-T7-1A
Manufacturer	<a href="#">Ketsurui Fleet Yards</a>
Year Released	<a href="#">YE 30</a>
Price (KS)	20,000.00 KS

<sup>1)</sup>

<https://starmy.com/roleplay-forum/index.php?threads/raccoon-t7-transport-shuttle.765/>

From:  
<https://wiki.starmy.com/> - STAR ARMY

Permanent link:  
[https://wiki.starmy.com/doku.php?id=starmy:small\\_craft:raccoon\\_t7\\_transport\\_shuttle](https://wiki.starmy.com/doku.php?id=starmy:small_craft:raccoon_t7_transport_shuttle)

Last update: 2023/12/21 01:02

