

# Orbital Geological Survey Platform

An orbital geological survey platform designed to be a part of the CEP (Colonization and Exploration Package) by [Ketsurui Fleet Yards](#). The OGS Platform is utilized in the accurate collection of geological data from planetary bodies. It serves, when in a network of other OGS Platforms deployed in orbit, as a scanning platform to locate geological formations, key resource collection sites and planetary geological monitoring component. Its sleek powerful design is ideal when personnel resources are stretched to other priorities.



## History

The Orbital Geological Survey Platform entered service in [YE 28](#). They were frequently towed to planets by medium starships like the

In [YE 31](#), the [YSS Eucharis](#) deployed OGSPs in orbit of [HX-2 II](#), [HX-12 II](#), and [System HX-22](#).

In [YE 32](#), the [YSS Aeon](#) deployed an OGSP in orbit of [Veronica](#) and the [YSS Eucharis](#) placed on in orbit of [HX-5](#).

In [YE 34](#), the [YSS Eucharis](#) deployed an OGSP in orbit of [Kazumi<sup>1\)</sup>](#) and [UX-11 IX](#).

In [YE 42](#), something or someone attempted to board the survey platform at [HX-5](#) and its anti-tampering detectors activated its self-destruct system<sup>2)</sup>.

## Description

The OGS is also capable of deploying the “MOGS” ([Mobile Operational Geological Surveyors](#)) which are effective for terrain, subterranean and underwater geological resource sampling.

- Government: Yamatai Star Empire and Others
- Type: Orbital Platform
- Design: Prototype OGS-X11
- Manufacturer: Ketsurui Fleet Yards & Star Army Research Administration

Crew: Unmanned, but can support 1-3 maintenance personnel provided activation of life support systems.

- Length: 50m
- Width: 20m
- Height: 25m

Propulsion Systems: 16 KiMT-n2419 Manuv. Thrusters

- Landing: Not Equipped for Landing
- Range: Extremely Limited
- Lifespan: 15 years
- Refit Cycle: As needed.

## Systems

Communication Systems: Laser connection to CEP Command Center on surface and can be accessed by laser connection pending proper authorization protocols by vessels in short range.

“MOGS” Storage & Launch Facilities: Located along the longitudinal axis of the OGS are tiny launch tubes capable of deploying the “MOGS” units. (View details about the [Mobile Operational Geological Surveyor](#))

Geological Scanning Suite: The GSS is capable of active scans up to 8000m beneath the planets surface. It uses a combination of electromagnetic, spectrometer and gravimetric scans to actively search for up to 130,000 natural phenomenons and an extensive array of geothermal and geochemical events.

Tamper System: On board computer capable of sensing tampering from unauthorized physical or electronic methods. In the event the system believes it is being compromised the OGS will detonate 4 micro-containments of antimatter located along construct connect points and computer core.

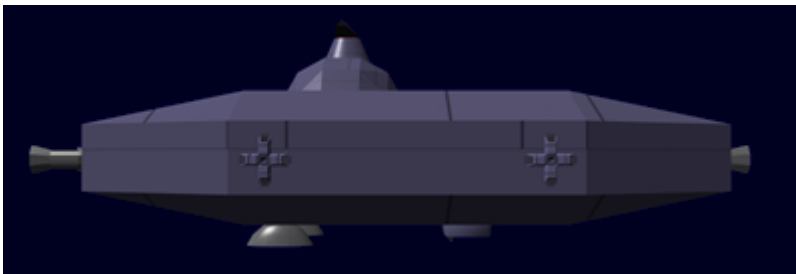
Life Support Systems: Life support systems can be activated remotely from incoming maintenance craft. System can support up to 3 standard personnel at normal atmosphere inside of the systems module for up to 3 days. Water and other emergency supplies are stored within locker in the module. Waste recycling systems are minimal and are relatively unreliable. The Support Systems are designed for short service visits or emergency situations not prolonged use. The system remains in standby mode when personnel are not on board and maintains a less than inhabitable atmosphere.

## Views

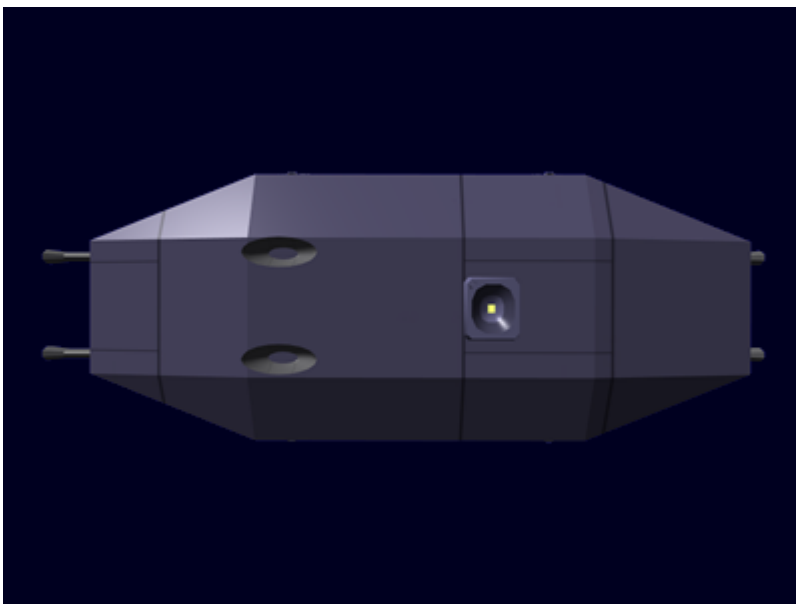
This view is of the bow, it shows the airlock and the towing points. You can also see the communications stack on the top, and part of the scanning suite on the bottom.



This is the port view, you can see the thruster clusters on this side as well as the towing ports in the bow (extended) and the stern (retracted).



This is the bottom view showing the external components of the Geological scanning suite.



# OOO Notes

Created by [Andrew](#) in August 2005<sup>3)</sup>.

Star Army Logistics	
Supply Classification	Class A - STARSHIPS
Products & Items Database	
Product Categories	space stations
Product Name	Orbital Geological Survey Platform
Nomenclature	OGS-X11
Manufacturer	<a href="#">Ketsurui Fleet Yards</a> , <a href="#">Star Army Research Administration</a>
Year Released	YE 28

1)

exact date/year unknown

2)

<https://stararmy.com/roleplay-forum/threads/orbital-platform-explodes-over-hx-5.65538/>

3)

<https://stararmy.com/roleplay-forum/threads/kfy-ogs-x11-orbital-geological-survey-platform.12053/>

From:  
<https://wiki.stararmy.com/> - **STAR ARMY**

Permanent link:  
[https://wiki.stararmy.com/doku.php?id=stararmy:small\\_craft:orbital\\_geological\\_survey\\_platform](https://wiki.stararmy.com/doku.php?id=stararmy:small_craft:orbital_geological_survey_platform)

Last update: **2023/12/21 01:02**

