

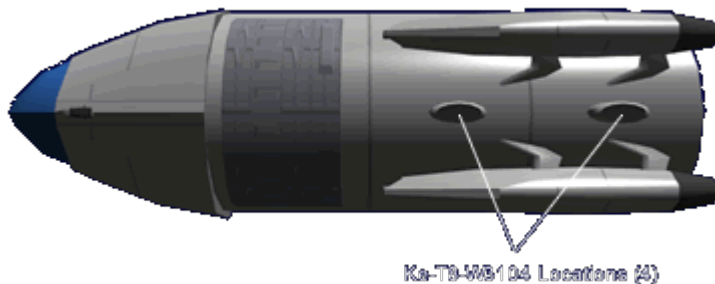
Ke-T8-W3104 Weapon Pod Mounts

The Ke-T8-W3104 was developed for use on the [Ke-T8 "Kuma" Multi-role Shuttle](#) and became available in [YE 31](#).

About

The Ke-T8-W3104 provides power and control connectivity between the shuttle and the weapon system being mounted.

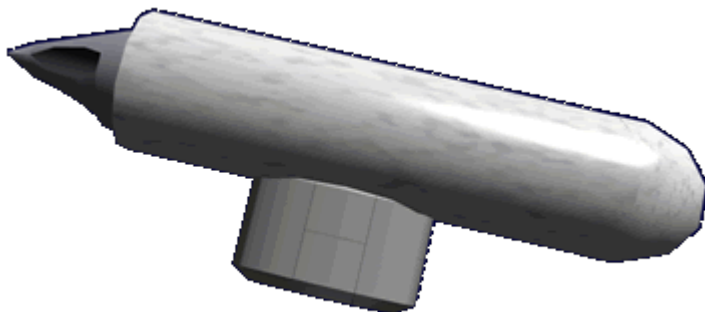
This image shows the location of the mounts on the shuttle. There are two on each side.



History

Because the *Kuma* shuttle was to be multi-role the designers needed a way to easily attach and disconnect weapons from the craft. The Ke-T8-W3104 provides that capability and connects to the four mounting points on the shuttle. In the event the weapon system is damaged the Ke-T8-W3104 can be jettisoned with the damaged it.

Shown here attached to the [Ke-T8-W3101 Mini-Missile Launcher Pod](#).



General

Class: Ke-T8-W3104 Type: Weapon System Mount Designers: [Ketsurui Fleet Yards](#) Manufacturer: [Ketsurui Fleet Yards](#) Production: Mass Production

Length: .5 meters (1.64 feet) Height: .166 meters (.546 feet) Width: .25 meters (.82 feet)

From:
<https://wiki.stararmy.com/> - **STAR ARMY**

Permanent link:
https://wiki.stararmy.com/doku.php?id=stararmy:small_craft:kuma_t8_multi-role_shuttle:ke-t8-w3104

Last update: **2023/12/21 04:26**

