

Ke-T8-W3103 Countermeasure Module

The Ke-T8-W3103 was developed for use on the [Ke-T8 "Kuma" Multi-role Shuttle](#) and became available in [YE 31](#).

About

The Ke-T8-W3103 is an array of systems designed to counter targeting systems. It is mission configurable.

History

Since the *Kuma* is intended to replace the [Ke-T4 "Fox" Combat Aeroshuttle](#) the design team wanted to increase its survivability in combat.



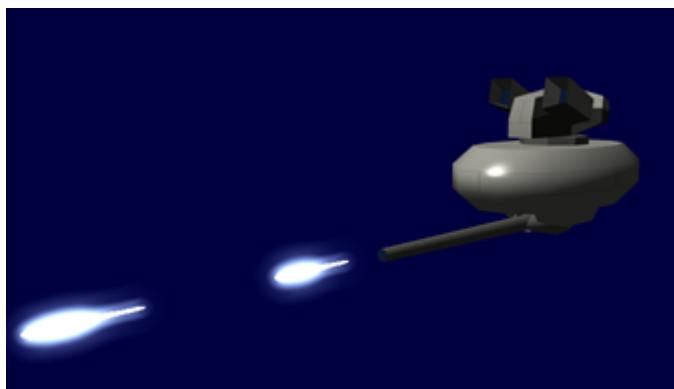
Specifications

General

Class: Ke-T8-W3103 Type: Defensive System Designers: [Ketsurui Fleet Yards](#) Manufacturer: [Ketsurui Fleet Yards](#) Production: Mass Production

Requires Weapon Pod Mounting.

- View details about [Ke-T8-W3104 Weapon Pod Mounts](#)



Dimensions

Length: .75 meters (2.46 feet) Width: .5 meters (1.64 feet) Height: .5 meters (1.64 feet)

Details

A Ke-T8-W3103 module can be configured with two of these systems:

- Laser Refracting Cloud
- Anti-Radar Chaff
- Aether Plasma Flare Launcher
- Active Anti-Missile System

Each of these is designed to work against a specific targeting system. Each has an independent detection and deployment mechanism.

Ke-T8-W3103L Laser Refracting Cloud (Duster)

This subsystem is designed to defeat laser targeting. It fires a small canister of laser refracting material. Two seconds after being fired the canister detonates releasing its contents in a cloud. Each container creates a dispersal cloud about 20 meters wide. Beyond that the cloud loses effectiveness. The system typically fires a spread of five canisters to create a wall of obscurity.

- Range: Detonates 40 meters from launcher
- Rate of Fire: 5 per volley
- Payload 20 canisters



When installed on a craft, a series of laser detection strips (12) are applied to the hull. Each of these is tied into the module and used to target where the cloud is fired.

Ke-T8-W3103R Anti-Radar Chaff Dispenser (Streamer)

This subsystem is your basic anti-radar system that fires canisters with radar reflective material. These are fired towards the attacker and detonate two seconds after being fired. When they detonate they eject hundreds of meters of wire laced aluminum coated ribbon.

- Range: Detonates 40 meters from launcher
- Rate of Fire: 1-2 per volley
- Payload 20 canisters

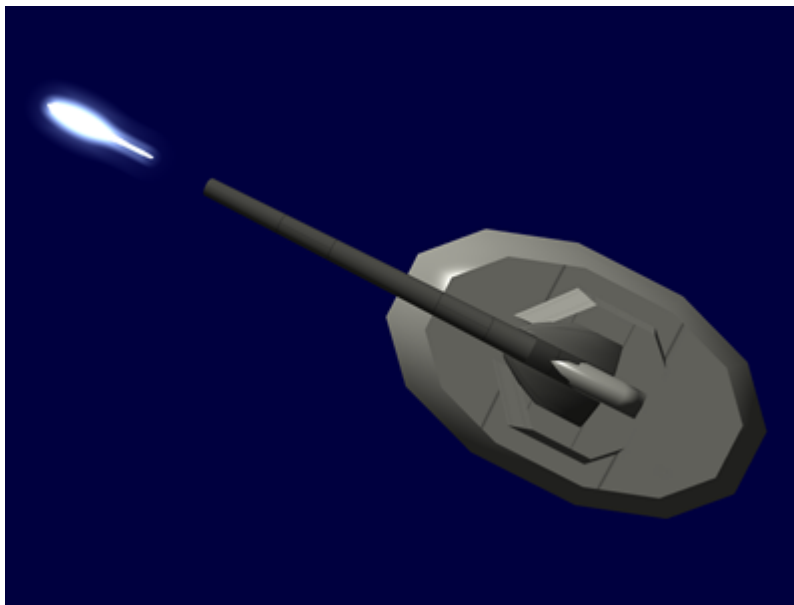


When installed on a craft, a series of radar detection strips (12) are applied to the hull. Each of these is tied into the module and used to target where the chaff is fired.

Ke-T8-W3103A Aether Plasma Flare Launcher (Starfire)

This subsystem is designed to defeat thermal targeting. It fires a stream of [Aether](#) Plasma bolts to break a thermal lock on the shuttles engines. Of course if a missile hits one of the flares it will take damage.

- Damage: 1 ADR
- Range: 1000 meters
- Rate of Fire: 2 per second
- Velocity: 1000 mps
- Payload Unlimited

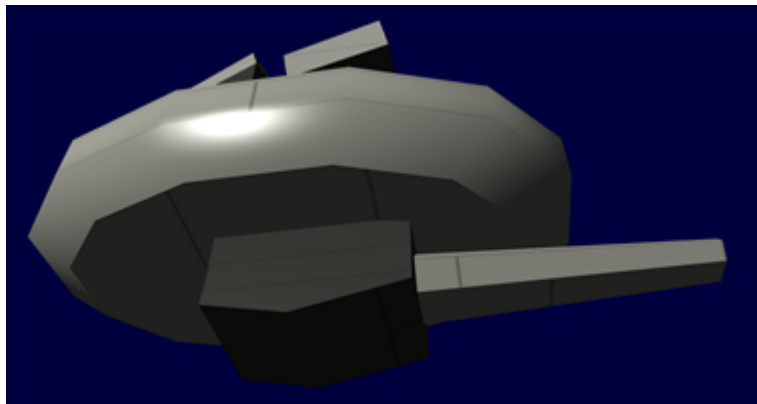


Close up image of Ke-T8-W3103A

Ke-T8-W3103M Active Anti-Missile System (Knockdown)

This system is an active defense system. When activated it fires a burst of impact detonated charges 4cm in diameter at high speed at an incoming missile. The charge is intended to destroy the guidance system of the projectile. The charges are made of 1/3 of a block of [T31PE](#). The spheres arm when launched.

- Damage: 3 PDR
- Range: 1000 meters
- Rate of Fire: Volley of 3
- Velocity: 500 mps
- Payload 60 rounds



From:

<https://wiki.stararmy.com/> - **STAR ARMY**

Permanent link:

https://wiki.stararmy.com/doku.php?id=stararmy:small_craft:kuma_t8_multi-role_shuttle:ke-t8-w3103

Last update: **2023/12/21 04:26**

