

Ke-V8 "Teisatsu" Fighter

The *Teisatsu* Reconnaissance fighter is a variant of the [Ke-V8 "Kawarime" Fighter](#) originally developed for [Star Army Intelligence](#), it became available in [YE 32](#). In [YE 34](#) this class of fighter was upgraded to the [Ke-V8-2x](#). SAINT began retrofitting [Ke-V8-3A Super Kawarime](#) fighters with Teisatsu sensors packages starting in [YE 42](#), effectively creating the Ke-V8-3A/X "Super Teisatsu" variant. All three types remain in service with both SAINT and the [Second Expeditionary Fleet](#).



About the Teisatsu

Like its predecessor the *Teisatsu* fighter is capable of fulfilling various mission types by altering its configuration. Some of the new systems developed for it are backwards compatible with the [Ke-V8 "Kawarime" Fighter](#). The *Teisatsu* comes in two variants a stealth version 1C for [Star Army Intelligence](#) and the 1D for use by other [Star Army of Yamatai](#) forces. The *Teisatsu* 1C is slower than the 1D because of having to divert power for some of the special systems. Both models of the *Teisatsu* are single seaters.

History

With the rollout of the [Rikei-Class Science Vessel Star Army Intelligence](#) was quick to take up the stealth variant. The group in the [2XF](#) wanted to adapt a newer craft for use by their operatives. They wanted a vehicle that could be configured for missions, small, stealth capable, and capable of engaging the enemy when necessary. The *Teisatsu* fighter is the result of that initiative.

Appearance

The *Teisatsu* initially looks like a [Ke-V8 "Kawarime" Fighter](#). However, the forward two aether cannons are removed and a transparent panel is in place covering the enhanced sensors. The *Teisatsu* are painted with a flat charcoal colored radar absorbing paint.

Features

- [Durandium Alloy](#) body with [Yamataium](#) armor plates.
- Running lights
- Retractable landing gear
- Wings, stabilizers and flaps for atmospheric use
- Eject-able cockpit
 - 1 [Type 31A and 31C Survival Kit](#) located under seat
- Compartment for a Type 20 [Camouflage Fabric](#) with matching power supply.

Statistical Data

General

Class: *Teisatsu*-class Type: Recon fighter Designers: [Ketsurui Fleet Yards](#), [Takumi](#) Manufacturer: [Ketsurui Fleet Yards](#) Organizations using this ship: [Star Army of Yamatai](#), [Second Expeditionary Fleet](#)

Original

Nomenclature: Ke-V8-1c - Stealth Nomenclature: Ke-V8-1d - Non-Stealth

Upgrade

Nomenclature: Ke-V8-2c - Stealth Nomenclature: Ke-V8-2d - Non-Stealth

Dimensions

Length: 13.95 meters (44.28 feet) Wingspan: 8.25 meters (27.06 feet) Height: 1.95 meters (6.396 feet)

Speeds

The *Teisatsu* is very responsive fighter craft.

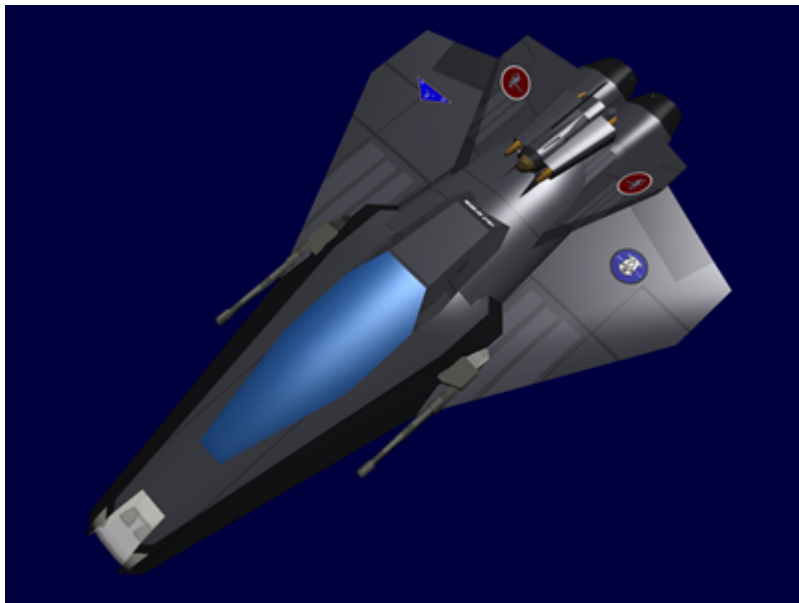
1C only

- Atmospheric:
 - Cruise 3,581 kph (2,225 mph) Mach 3
 - Max 7,163 kph (4,450 mph), Mach 6
- Sublight Engines: .3c (~89,937 kilometers per second) (~55,884 miles per second)
- Speed (Hyperspace Fold): 262,980c (0.50 ly/m) (Only with [Ke-T8-P3102 Hyperspace Fold Module](#) attached)
- Range: Maximum fold distance crossed in a single jump is 20 light years.
- Duration: 10 minutes for maximum fold
- Charge Cycle:
 - 10 LY or less - 15 seconds
 - More than 10 LY up to 20 LY - 30 seconds
 - 5 minute cool down between folds

1D only

- Atmospheric: Mach 6
- Sublight Engines: .35c (~104,927 kilometers per second) (~65,198 miles per second)

Systems



Armor

The *Teisatsu* 1C has an outer layer of [Xiulurium](#) to help with stealth on its plating.

Cloak

The *Teisatsu* 1C has a compact cloaking system based on the one used on the [Elysian Nariel Assault Battlecruiser](#) which renders its power supply invisible to aetheric-energy sensors.

Enhanced Sensors

The *Teisatsu* features an enhancement to its sensor package. It features the [Ke-T8-E3101 Science Sensor Package](#) mounted in place of two of the [Ke-V8-W3100 Turbo Aether Cannon](#). This provides enhanced tactical information gathering capabilities.



Enhanced Propulsion

The *Teisatsu* 1C is capable of mounting a [Ke-T8-P3102 Hyperspace Fold Module](#) using a modified mounting bracket. When attached this systems is normally reserved for escape and evasion.

The *Teisatsu's* Ke-T8-P3103 Combined Field System is modified to allow propulsion when the cloaking system is engaged.

Weapon Systems

The *Teisatsu* removed two cannons from its design.

- 2 [Ke-V8-W3100 Turbo Aether Cannon](#) Tier 9, Heavy Anti-Mecha per cannon
- 2 Wing mounts similar to [Ke-T8-W3104 Weapon Pod Mounts](#) capable of handing the following. (1 per wing)

Wing Loaded Armament

One of these can be installed on each of the wing mounts.

- [Ke-Z1 Series Anti-Starship Torpedoes](#) Tier 11, Medium Anti-Starship-5 varies by torpedo
- [Ke-T8-W3101 Mini-Missile Launcher Pod](#) Tier 4, Light Anti-Armor per missile
- [Ke-T8-W3103 Countermeasure Module](#) ADR 0 - 1 varies by system

Wing Loaded Mission Equipment

- [Ke-V8-W3200 Targeting Module](#) DR 0
- [Ke-V8-W3201 Decoy Launcher](#) DR 0
- [Ke-V8-E3200 Wavefront Module](#) DR 0

OOC Notes

Authored by [Nashoba](#) and approved by [Wes](#) on Apr 30, 2010 ¹⁾

¹⁾

<https://starmy.com/roleplay-forum/index.php?threads/kfy-v8-teisatsu-fighter.5211/>

From:

<https://wiki.starmy.com/> - **STAR ARMY**

Permanent link:

https://wiki.starmy.com/doku.php?id=starmy:small_craft:ke-v8_s_teisatsu

Last update: **2024/02/19 14:29**

