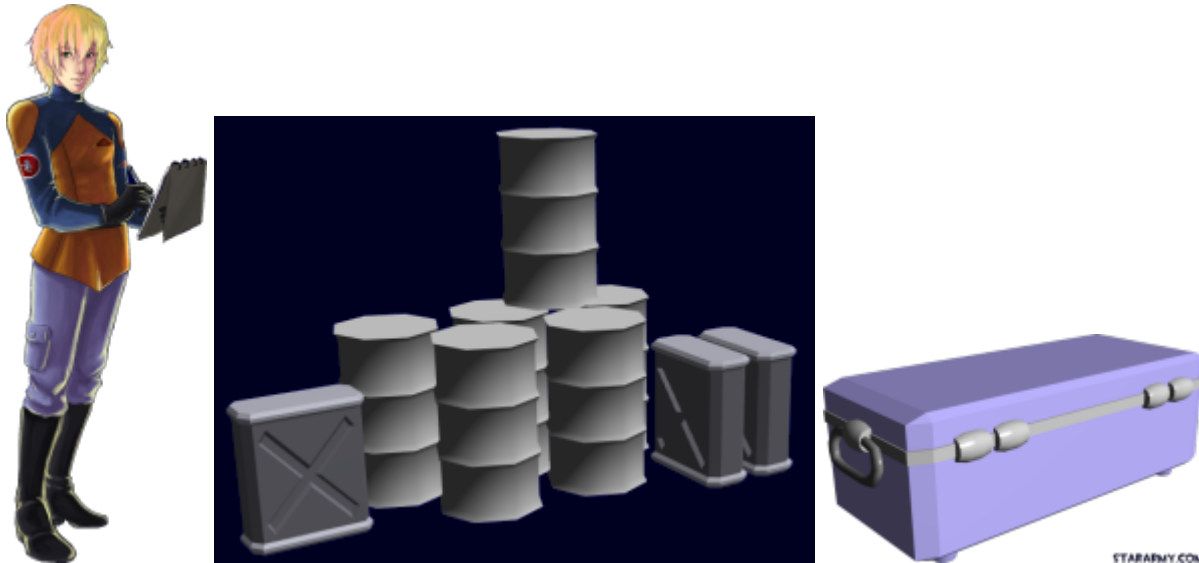


# Standard Star Army Cargo Area

A starship's cargo area is used for repair supplies and non-perishable foodstuffs, and generally reserved for storage of mission-essential equipment and supplies.



The standard cargo area has white padded walls and a metal floor with plenty of tie-down points. Some parts of the floor have strips of rollers so that crates can be moved easily up and down the length of the bay.

Each end of the cargo area has a large robotic arm that extends from the ceiling area, used to reposition crates of cargo within the bay. It can be manually operated via a mobile control console, or (by placing the console on automatic mode) operated by the ship's computer via voice command.

See: [Standard Starship Cargo Containers](#)

From:

<https://wiki.stararmy.com/> - **STAR ARMY**

Permanent link:

[https://wiki.stararmy.com/doku.php?id=stararmy:interiors:standard\\_cargo\\_area](https://wiki.stararmy.com/doku.php?id=stararmy:interiors:standard_cargo_area)

Last update: **2023/12/21 01:02**

