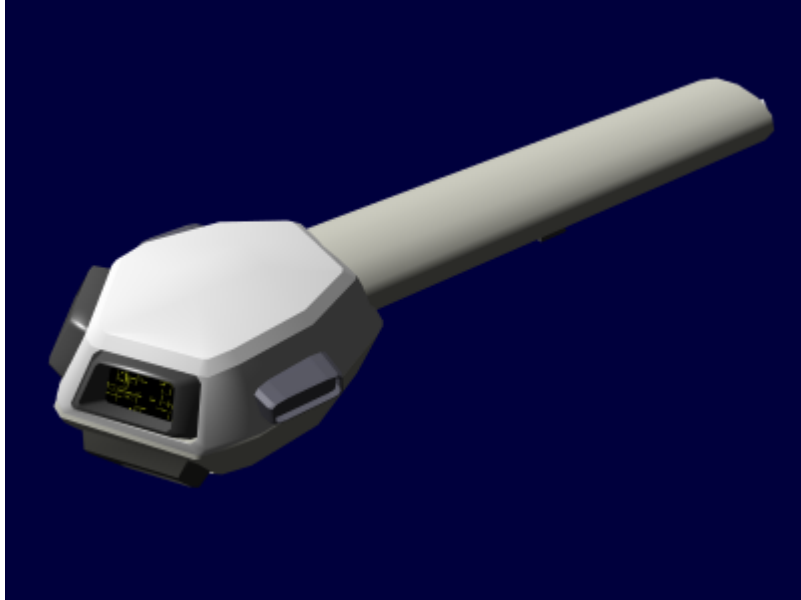


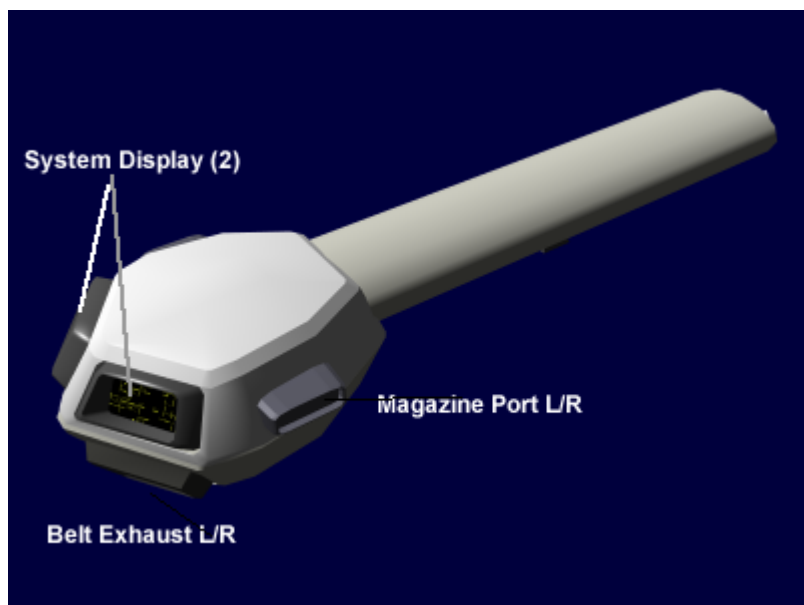
# Ke-P4-W3200 Gauss Cannon

The Ke-P4-W3200 Gauss Cannon was developed as part of the [Reprisal Defense System](#). It became available in [YE 32](#).



## About the Ke-P4-W3200

The Ke-P4-W3200 is a twin barreled magnetically accelerated or gauss weapon. It fires either a single round or a pair of 13mm projectiles. Using magnetism makes the weapon virtually silent, and gives it the effective speed and range. The cannon is self cooling to maintain proper temperature of the coils. Projectiles are fed into the cannon by a fabric belt feed mechanism. The belt disintegrates as the projectile is extracted and ejected out the two ports on the back of the cannon. The targeting array is located under the barrel.



## Targeting Array

The targeting array has visual sensors including thermal. It also has sensors to detect wind speed/direction.

## General

Class: Gauss Cannon Nomenclature: Ke-P4-W3200 Type: Anti-Personnel/Anti-Armor Designers: [Ketsurui Zaibatsu](#) Manufacturer: [Ketsurui Zaibatsu](#) Organization Using This item: [Star Army of Yamatai](#) Date entered service: [YE 32](#) Units Fielding: [Second Expeditionary Fleet](#), [Fourth Fleet](#)

## Dimensions

- Length: 1.67m (66 inches)
- Width: .60m (24 inches) (w/o magazine)
- Height: .40m (16 inches)

## Performance

The Ke-P4-W3200 has a variety of firing modes and as such its damage varies accordingly. It can fire a single round, a pair of rounds, or full automatic 500 rpm.

- Muzzle velocity: 1,279 m/s (4,200 ft/s)
- Effective Range: 3,658 m (4,000 yd)]
- Maximum Range: 8,515 m (9,312 yd)

## Damage Rating

See [Damage Rating \(Version 3\)](#) for an explanation of the damage system.

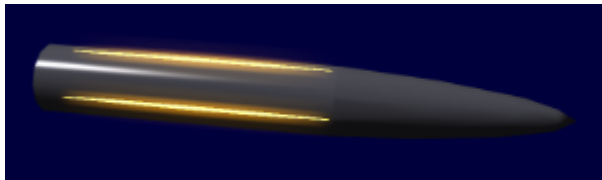
- Single shot (1 rnds) 4 PDR
- Double tap (2 rnds) 1 ADR
- Automatic (83.3 rnds) 3 ADR

## Munition Options

The Ke-P4-W3200 uses two kinds of ammunition. Both have the same dimensions 13mm x 100mm.



- Armor Piercing - this is the primary round used in the cannon, it is composed of [Durandium Alloy](#) and has a ferrous core.



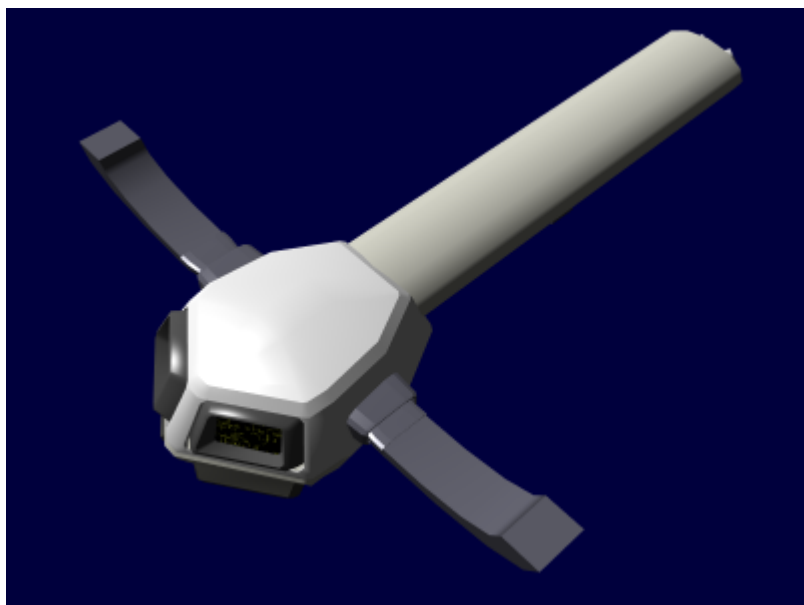
- Tracer - two of every eight rounds in a belt are tracer rounds, built with similar shape as the AP round they have a groove on each side that is filled with a [Flare \(pyrotechnic\)](#) material. This material is ignited by air friction and burns for only a few seconds, but that is more than long enough to cover its effective range.

## Magazines

Ammunition is held in magazines, and is belt fed. Magazines can only be used on the appropriate side. Standard operating procedure is to use paired magazine, however it is possible to mix and match.

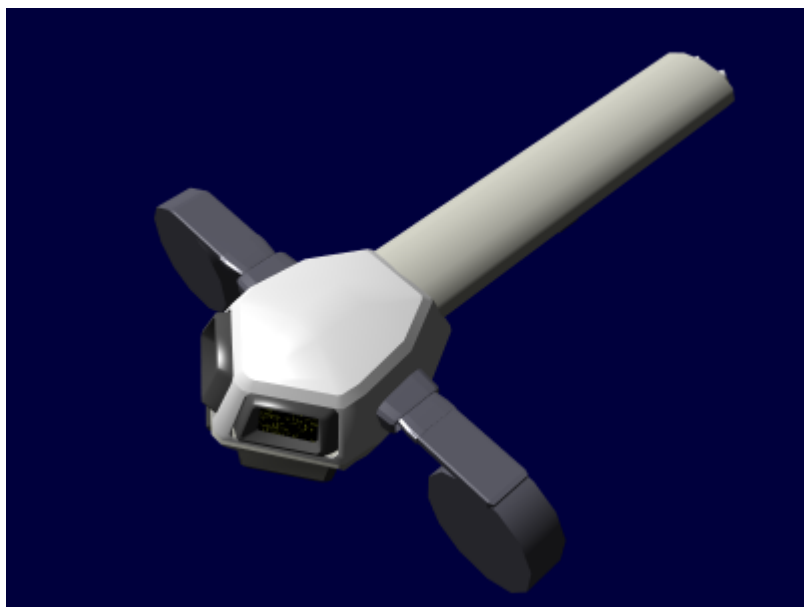
### Ke-P4-M3200 Curved Magazine

The Ke-P4-W3200 can be fitted with one or two curved magazines. They are designed with an L or R to indicate which side to be installed. Each magazine holds 250 rounds.



### Ke-P4-M3201 Drum Magazine

The Ke-P4-W3200 can also be fitted with one or two drum magazines. They are designed with an L or R to indicate which side to be installed. Each drum holds 2,500 rounds.



### Power Armor Usage

In the event that the [Reprisal Defense System](#) has been damaged, but the cannon is intact. It is possible to detach the cannon from the base add a pair of handles and connect a power cable to any [Daisy M6 Infantry Power Armor](#) or Mindy Series armor. Typically when used in this fashion a single magazine is installed. Targeting of the cannon is done via the HUD of the power armor.



### Procedure for converting cannon

- Power off Reprisal
- Disengage locks on yoke, manually
- Disconnect cable from yoke and base
- Remove cannon from yoke.
- Attach cable to cannon.
- Attach cable to weapon port on power armor.

From:

<https://wiki.starmy.com/> - **STAR ARMY**

Permanent link:

[https://wiki.starmy.com/doku.php?id=starmy:equipment:reprisal:ke\\_p4\\_w3200](https://wiki.starmy.com/doku.php?id=starmy:equipment:reprisal:ke_p4_w3200)

Last update: **2023/12/21 04:26**

