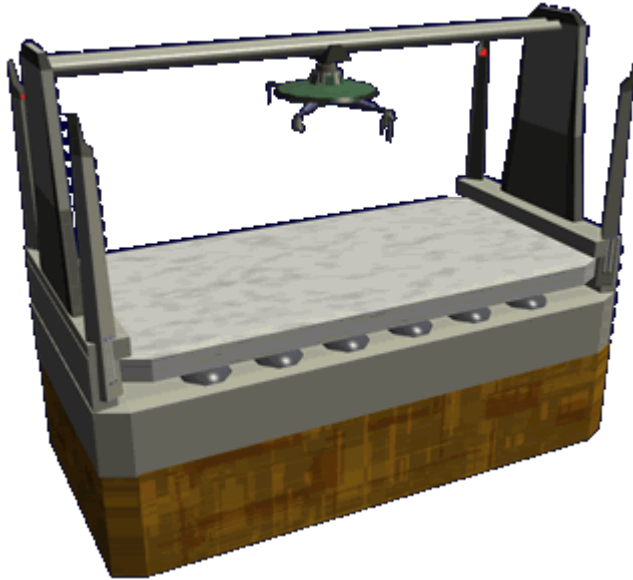


# Ke-J1-E3100 - Autonomous Triage Unit (ATU)

The Autonomous Triage Unit (ATU) is part of the [Autonomous Medical Treatment Center \(AMTC\)](#) and became available in [YE 31](#).



## About the ATU

The ATU is capable of making rapid, accurate, patient condition assessments. As part of the triage process the ATU also prepares the patient removing clothing (if necessary), cleaning wounds etc. It then instructs the [Autonomous Nurse Unit](#) to transfer the patient to the appropriate medical unit.

## History

The ATU was developed as part of the [AMTC](#) as the starting point for patient care.

## Using the ATU

The ATU activates when a patient is placed on the [Detachable Patient Platform](#). It automatically engages the [Containment Force Fields](#) to protect the patient from infection and to keep the patient from spreading possible infection. If the patient is conscious the ATU begins diagnosis by questioning the patient. If the patient is unconscious it will query the person who brought the patient to it, or follow the auto-diagnostic routine developed by Yamatai medical personnel.

# Statistical Data

## General

Organization Using This item: [Star Army of Yamatai](#), Yamatai government agencies, and Civilians Type: Medical Center Nomenclature: Ke-J1-E3100 Designers: [Ketsurui Zaibatsu](#) Research and Development teams, [Jalen Sune](#) Manufacturers: [Ketsurui Zaibatsu](#), [Star Army of Yamatai](#) Date entered service: [YE 31](#)

## Supported species

Currently the ATU is capable of providing medical diagnostic care to the following species:

- [Human](#)
- [Yamataian](#)
- [Nekovalkyrja](#)
- [Nepleslian](#)
- [Elysian](#)

## Capacity

- 1 Patient

## Dimensions

Length: 2.44 meters ( 8 feet) Width: 1.22 meters ( 4 feet) Height: 2.44 meters (8 feet)

## Components

The ATU has the following components:

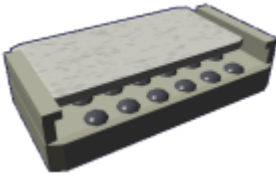
- [Computer Program Module](#) programmed with the current medical knowledge to diagnose a patients condition using state of the art diagnostic equipment, and make a treatment determination. The programming is updatable by trained technicians.



- One of the diagnostic tools used by the ATU are [Scanner nanomachines](#) originally developed for the

### Portable Medical Scanner PMS-1M.

- Detachable Patient Platform (DPP)



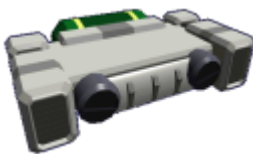
- Medical equipment unit with medical tools for diagnosing and preparing patient.



- Self-contained emergency power



- Containment Force Fields
- Integrated Atmosphere System



- Integrated Decontamination System

From:

<https://wiki.stararmy.com/> - **STAR ARMY**

Permanent link:

<https://wiki.stararmy.com/doku.php?id=stararmy:equipment:amtc:atu>

Last update: **2023/12/21 04:26**

