

Chikara Starbase

The *Chikara*, [NK-X2-003](#) is a [Kisaki-class Starbase](#) built at [Chiharu no Iori](#) by [Ketsurui Fleet Yards](#) in [YE 32](#) for the [Star Army of Yamatai's Second Expeditionary Fleet](#). It is under the command of [Ikehara Kazuo Shosa](#) under [2XF Logistics](#). It operates out of [SX-05](#).

It serves as the arms manufacturing facility for [2XF Depot](#). It is involved with refining resources, producing supplies, and equipment for the fleet and arranging their distribution.



Chikara ちから - means force; strength; might; vigor ; energy. Its motto is "*Serving those who Serve.*"

History

Chikara starbase was constructed in [YE 32](#) by [Chiharu no Iori](#) in orbit over [Daichi](#). After completion, it was deployed to [SX-05](#) to serve as the [Depot](#) for the [Second Expeditionary Fleet](#).

Description

Chikara is the sixth [Kisaki-class Starbase](#) constructed for the [Second Expeditionary Fleet](#) serving as the [2XF Depot](#).



Shops

All modules were outfitted with the following shops:

- [Warm and Sweet](#) [[items:drinks:coffee Shop]]
- [Kagayaki Cosmetics Day Spa](#)
- [VCE Cafe](#)
- [Ramen To Go](#)
- [Meat On A Stick](#)
- [Kikyo Pie Company](#) (YE 41).
- [Tokyo Brewing Company](#) (YE 43).
- [Flavor Of Victory](#) (YE 45)

Module 1 features the following additional shops:

- [Star Army Ship's Store](#)
- [Star Army Alterations and Embroidery](#)

Module Configuration

Module #	Type	Details
1	Ke-H4-M3101a - Residential	Living Quarters for the Depot personnel
2	Ke-H4-M3101d - Manufacturing	Power Armor and Equipment
3	Ke-H4-M3101d - Manufacturing	Small Arms Production
4	Ke-H4-M3101e - Military	Reserve space converted to include hangar space for 4 squadrons of Ke-V8 "Kawarime" Fighter .

Appearance

Chikara is painted [Star Army of Yamatai](#) blue, with the [Star Army Hinomaru](#) emblazoned on the top of each habitat module. The command module is white for visibility. Module four is a [Ke-H4-M3101e - Military](#) and is the only module with weaponry visible.

Weapons

See [Damage Rating \(Version 3\)](#) for an explanation of the damage system.

- 2 [Ke-Z1 Series Anti-Starship Torpedoes](#)
- 4 [Heavy Dual Anti-Starship Gun Turrets](#) (Tier 11, Medium Anti-Starship)
- 8 [Heavy Quad Anti-Mecha Cannons](#) (Tier 9 Heavy Anti-Mecha)

People

- Crew: 400
- Compliment: 2,400



Position	Name	Rank	Species
Commander	Ikehara Kazuo	Shosa	Yamataian (F)
Chief of Security	-	-]
MEGAMI	-	n/a	AI

Characters

Here's an automatic list of all characters currently in this place (based on structured data from their character pages).

Nothing found

RP Opportunities



Local Rumors



Inventory

Defense



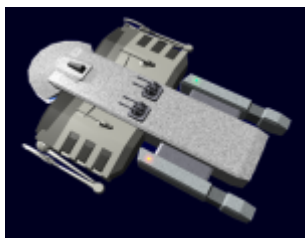
Name	IRN	Class	Commander	Status/Remarks
YSS -	NG-X2-160	Plumeria-class (2D) Medium Gunship	-	<i>Awaiting Crew</i>
YSS -	NG-X2-163	Plumeria-class (2D) Medium Gunship	-	<i>Awaiting Crew</i>
YSS -	NG-X2-165	Plumeria-class (2D) Medium Gunship	-	<i>Awaiting Crew</i>
YSS -	NG-X2-167	Plumeria-class (2D) Medium Gunship	-	<i>Awaiting Crew</i>

Tugs



- 5 [Kainushi-Class Tug Vessel](#)

Mining



24 [Ge-Y1-4a - "Henkei" Prospector](#)

Note these ships do not count towards fleet strength.

The following vehicles are assigned to [Chikara Starbase](#).

Shuttles

- 12 [Ke-T7-1b - Raccoon T7 Transport Shuttles](#)



- 24 [Ke-T8-1a - Kuma T8 Multi-role Shuttles](#)



Fighters

- 48 [Ke-V8 "Kawarime" Fighter](#)



OOC

Article by [Nashoba](#).

Star Army Bases & Facilities	
Type	Starbase
Location	Daichi
Description	Fleet Base (2XF Depot)
Organization	Second Expeditionary Fleet
Places of the SARPiverse	
Opened/Settled (YE)	YE 32
Place Categories	military facility, space station

From:

<https://wiki.stararmy.com/> - **STAR ARMY**

Permanent link:

<https://wiki.stararmy.com/doku.php?id=stararmy:bases:chikara>

Last update: **2023/12/21 01:01**

