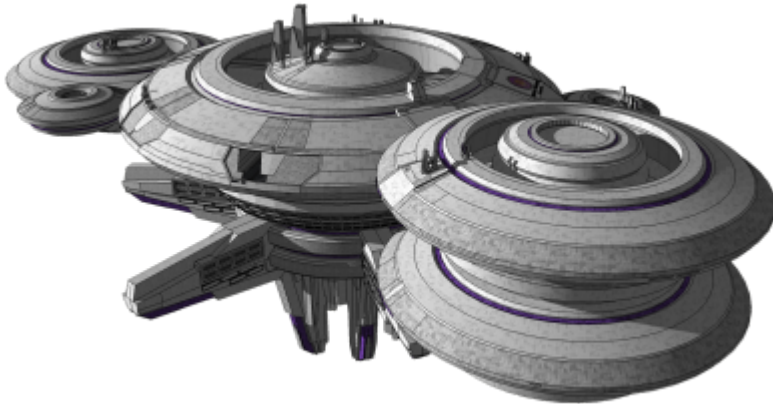


White Harbor Station Modifications and Interiors

This article details the differences and unique features of [White Harbor Station](#).



Interior Modifications

Due to its age [White Harbor Station](#) has undergone several refits and expansions that have drastically increased the stations residential capacity. Where the original station model had one 'Green' and one 'Grey' residential sector, White Harbor boasts an additional five color-coded residential sectors.

Green Sector - Amagasaki

One of the original and oldest residential sectors of [White Harbor Station](#). Amagasaki is for the most part a vast expanse of graceful towering spires and interwoven structures beneath a simulated sky. Home to countless independent businesses, higher-level education facilities and facilities owned and operated by the [Murasaki Keiretsu](#). Amagasaki is also the site of the local offices for [Yamatai Star Empire](#) upon the station, providing branch offices for the [Yamatai Security Agency](#), [Scientific Studies Service \(SSS\)](#) and other government departments. Transportation is accomplished by one of the many [trams](#) or by hiring the services of a hover transport to navigate between towers.

The original domed agricultural habitat located above Amagasaki has been converted into the main residence of the [Murasaki Clan](#). The compound takes the form of a vast Japanese-style mansion surrounded by a sprawling garden and a thick forested area.

Violet Sector - Kurashiki

Kurashiki city is home to most of the stations [Yamataian](#) permanent residents – the massive sector is filled to the brim with cozy residential spires, smaller businesses and parks, recreation locales and wide range of public and private education facilities. Not to mention there is a vast array of other minutiae of civilization as well.

Black Sector - Little Nepleslia

Due to its high commercial traffic White Harbor has long had a fairly large population of [Nepleslian](#) transients passing through, and as the station continued to grow and expand another section was created to suit the long-staying or permanent Nepleslian residents. The interior of the Little Nepleslia sector looks as if someone haphazardly transplanted a portion of [Funky City](#) into the station. Fancy, high-class residences meet garish complexes covered in neon signs and many areas have regrettably regressed into little better than run-down, crime-ridden slums. Within this sector a gritty little Nepleslian could probably find anything his heart desires, be it liquor, a [Neppies Burger Restaurant](#), guns, strip clubs, gambling casinos, cybernetics or the odd bit of illegal merchandize. Unfortunately the area also has a high crime-rate despite the best efforts of station security and the local branch of the [Yamatai Security Agency](#) to police it, which has had little to no success in stopping [Smuggling](#) and many of the criminal activities that take place in this sector.

White Sector - Takasaki

The small Takasaki city sector contains extremely high-class residential spires and complexes, as well as other facilities catered to the extremely rich or well off. Since the inclusion of the [Elysian Celestial Empire](#) as a suzerainty of the [Yamatai Star Empire](#), within this sector there exists a small [Elysian](#) Quarter containing buildings and residences built according the Elysian's own unique architectural style. Due to the isolationist nature of the Elysian culture and almost non-existent trade with that empire and its neighbors, there are few Elysian residents upon the station. Those that do live or work permanently aboard [White Harbor Station](#) have a tendency to set up shop in this area in order to remain apart from the stations non-Elysian residents as much as possible.

Cyan Sector - Miyazaki

Miyazaki cities main features apart from its fairly normal residential spires and commonplace amenities are its high-output agriculture, hydroponics and aeroponics facilities and extraordinarily lush and verdant parks which are home to a variety of flora and fauna imported up from planet [Anisa System](#). Most of the facilities in this sector are intended to supplement the stations importation of food and supplies for its residents.

Viridian Sector - Ibaraki

Ibaraki city is much like Kurashiki, except in miniature. Ibaraki possesses an assortment of facilities like skyscrapers, apartment complexes, grocery stores, schools, small businesses, retail outlets and generally anything else you would find in a planet-based city on planet [Yamatai](#).

Grey Sector - Fukushima

Fukushima is the most popular tourist destination aboard [White Harbor Station](#), offering the latest in gambling, fine dining and entertainment. Folks travel from light-years away just to try their luck at one of Maneki Neko Casino's many gaming tables. Sports fans can simply watch and enjoy or bet live on a variety of in-system races as well as a variety of other competitions. Art and history lovers can have the privilege of touring the extensive gallery's and museums of ancient Yamataian and alien artifacts.

If high-class dining is what you're after, then one need look no further than Ocean Pearl Restaurant – there one can enjoy a delectable meal, Elysian wine and a splendid view of planet [Anisa System](#).

Other Sectors

The other station sectors are not significantly dissimilar to what you would find upon a standard *Kōdaina Minato* station. Use the supplied links to learn more about each sector in the main *Kōdaina Minato* article.

- [Red Sector \(Command and Administration\)](#)
- [Gold Sector \(Heavy Construction, Industrial and Fabrication Facilities\)](#)
- [Blue Sector \(Docking Bays, Customs and Transportation Hub\)](#)
- [Orange Sector \(Docking Bays, Construction and Fabrication Facilities\)](#)
- [Brown Sector \(Warehouse Storage, Main Engineering and Support Systems\)](#)

Statistics and Performance

General Information

Class: Heavily-modified [Kōdaina Minato-class Orbital Installation](#) Type: Orbital Starport **Nomenclature:** Ge-H1-7A Designer: [Geshrinari Shipyards](#) Manufacturer: [Geshrinari Shipyards](#)

Crew and Accommodations

Crew Compliment: Approximately 12,800 Workforce Compliment: Approximately 147,000 Residential Capacity: Approximately 35,000,000 Maximum Capacity: In an emergency situation the station's life-

support systems can meet the minimum requirements for approximately 55 million individuals. Skeleton Crew Requirements: The stations core functions can be operated by a minimum of 6 individuals, supported by the stations AI and automated systems. An absolute minimum crew of 1,500 is recommended however, in order to properly maintain the station.

Dimensions

Width: 75.05 kilometers (46.63 miles) Height: 30.97 kilometers (19.24 miles) Decks/Sections:

- Total Decks: 7,742
- Habitable Decks 7,200
- Uninhabitable Decks: 542

Inertial Mass: 9,226,628,000 metric tonnes

Durability and Maintenance

Damage Capacity (See [Damage Rating \(Version 3\)](#) for an explanation of the damage system):

- Tier 15.

Service Lifespan: Indefinite Refit Cycle: Constant

System Modifications

Life Support

Ge-H2-V3300 Geshrinari Life Support System

White Harbor is equipped with five-thousand five-hundred separate [Ge-H2-V3300 Geshrinari Life Support Systems](#), allowing it to support a maximum of fifty-five million people at a time. These are located within [Brown Sector](#) and throughout the residential sections.

Power

Ge-H1-G3300 Geshrinari Aether Reactors

White Harbor utilizes eight [Ge-H1-G3300 Geshrinari Aether Reactors](#) as its main source of power. Six of these are located within [Brown Sector](#), with an additional two located in the extra residential sections.

Ge-H1-G3301 Geshrinari Fusion Reactors

White Harbor utilizes sixteen [Ge-H1-G3301 Geshrinari Fusion Reactors](#) as a source of auxiliary power. The station has in storage enough Helium-3 fuel to remain operating at normal levels for seventy-two hours. Most of the auxiliary reactors and fuel tanks are both located within [Brown Sector](#), with four being located in the outer residential sections.

Propulsion

Ge-H1-P3301 Geshrinari Turbo Plasma Drives

White Harbor has eighteen [Ge-H1-P3301 Geshrinari Turbo Plasma Drives](#) for the rare instances where the station needs to correct its position within a solar system. These are located within [Brown Sector](#) and in the outer residential sections. The additional plasma drives when compared to the standard *Kōdaina Minato* design allows White Harbor to perform at the same level.

GE-H1-P3302 Geshrinari Maneuvering Thrusters

White Harbor has three-hundred and twenty [GE-H1-P3302 Geshrinari Maneuvering Thrusters](#) which are used to change the stations orientation as needed. The additional thrusters when compared to the standard *Kōdaina Minato* design allows White Harbor to perform at the same level.

From:

<https://wiki.stararmy.com/> - **STAR ARMY**

Permanent link:

https://wiki.stararmy.com/doku.php?id=places:white_harbor:modifications_and_interiors

Last update: **2024/01/07 15:25**

