

YC-04-Proclycon System

One of the first few systems discovered by the [Colonization Initiative Alliance fleet](#). Since their arrival in the [Kosuke Sector](#), in [YE 45](#).



About the System

The YC-04, also known as the Proclycon System, stands as a celestial marvel with a singular star at its core. The system's singularity is attributed to intriguing possibilities—it may have expelled its planets, or perhaps, its stellar mass grew to such an extent that it consumed them. Despite the enigmatic origins, the star within YC-04 radiates with an enduring vigor, boasting an ample supply of solar power that could sustain the system for millions, if not billions, of years.

This stellar abundance serves as the lifeblood for the Daikoku Starships, leading to the formation of an intricate network. The Daikoku Network, comprised of meticulously arranged rings of Daikoku-Class Agricultural Ships, harnesses the perpetual solar energy to foster food production on an extraordinary scale. This innovative approach not only ensures the system's self-sufficiency but also transforms it into a beacon of sustainable agriculture and advanced technological adaptation.

In the vast reaches of the YC-04 (Proclycon System), the singular star, and the ingenious Daikoku Network intertwine, creating a harmonious dance between celestial forces and human ingenuity, ensuring the prosperity and sustenance of life within this cosmic domain.

History

Since the arrival of the [Colonization Initiative Alliance fleet](#) in [Kosuke Sector](#). They've discovered about five systems with many planets. Though this one, was after the Sharie system¹⁾, in addition to the system, the [Shiori](#) was found in. But they were looking for a new home, somewhere they could settle and use as their new capital, as well as potential sites for resource gathering²⁾. So when the system designated YC-03 was discovered and they saw how many resources they could get from it. The system was designated as an industrial-based system.

Then when [YC-04](#) was discovered, and with the system only contained one single Star and no planets and asteroids. They planned on moving on before [Motoyoshi-Igarashi Yue](#) spoke up, saying that there was still use for the system. She reminded them that the [Daikoku-Class Agricultural Ship](#) had solar panel technology and that they could have new Daikoku to form a network like they had chosen to in [YC05-Gyōkai System](#).

Later the Farmers in this network, had formed a Farming Co-op, as a business called the Farmers Collective. These people were responsible for the food production.

YC-04-Proclycon System Overview

Info about the Proclycon farms is below

Star Data



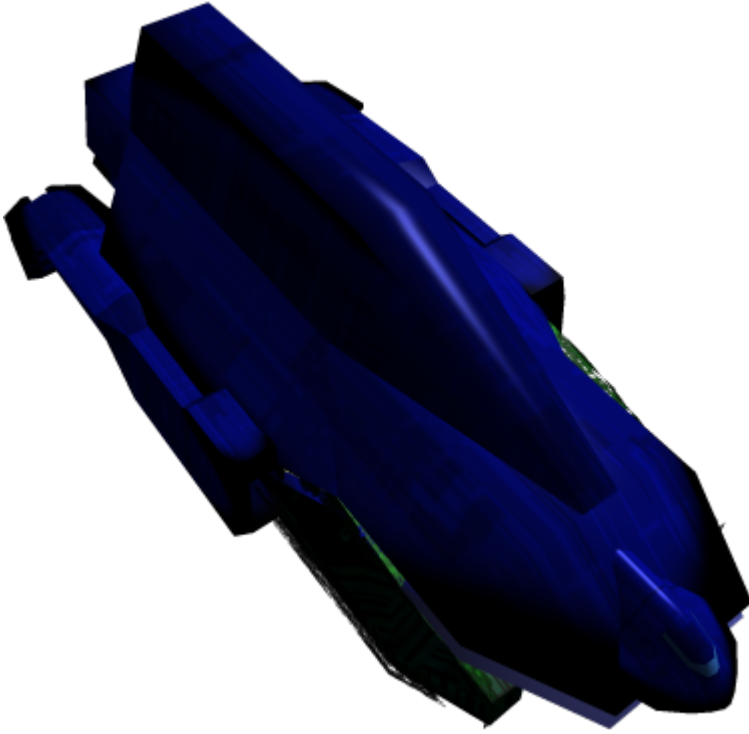
The star of the Proclycon System is a K3 O blue Supergiant.³⁾

Ranks	Description
Name	K3 O blue Supergiant
Type	spectral type B
Mass	2.988×2030 kg ⁴⁾
Temperature	40,000 K
Luminosity	1.13 x 1026 W (0.29 x sol)

Space Structures in the Proclycon System

Below is some information about the Space Structures, or “Rings” of the Proclycon System

Daikoku network



The Daikoku Network is an ingenious system comprising [Daikoku-Class Agricultural Ship](#) arranged in interconnected rings encircling the star within the YC-04-Proclycon System. These rings serve a dual purpose - harnessing the star's energy through strategically positioned solar panels and creating a simulated day and night cycle.

Each [ship](#) in the network contributes to the harmonious functioning of the entire system. The solar panels are oriented to face the star, efficiently absorbing its radiant energy. Through a synchronized cycle of spinning, the network achieves a simulated “day” and “night” effect, ensuring optimal conditions for agricultural processes and other essential functions across all Daikoku variants, including the foundational Daikoku vessels.

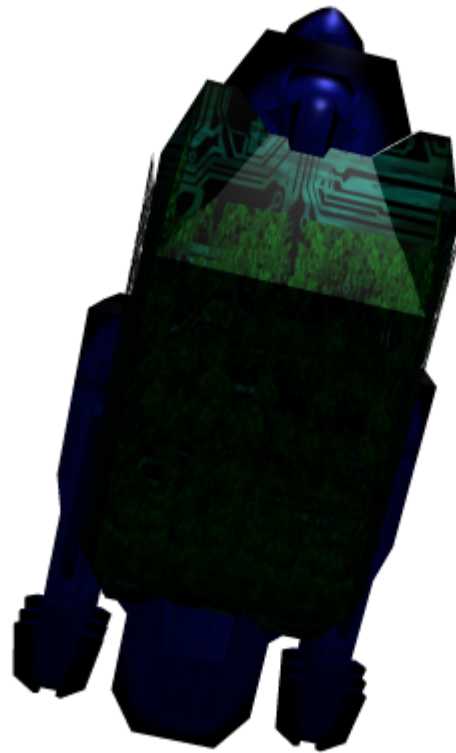
It's noteworthy that while the Daikoku Network in systems, such as YC05, is relatively smaller, the network's expanse increases in the outer regions like YC04. Consequently, there is a noticeable difference in time zones as one moves farther out within the network around the star, showcasing the adaptability and scalability of this innovative agricultural infrastructure.

Number of Ships

Each ring has 31 Daikoku Starships within it. The first ring, was made of the Daikoku Ships that the colonial Initiative Alliance fleet had brought with them. The rest of the ships in the other rings, were churned out by the shipyards used by the entire Colonial Initiative Alliance Fleet, in a agreement of collaboration, something [Kali Firewalker](#) desires. It will take 622 days it will take them to churn out 31 Daikoku Ships ⁵⁾

Hitotsunoyubiwa (Ring 1)

The Hitotsunoyubiwa, or Ring 1, is a remarkable component of the Daikoku Network within the YC-04-Proclycon System. Positioned horizontally around the left side of the star, it occupies approximately 238,943 degrees to the left, ensuring its continuous visibility.



This ring like the others plays a crucial role in the overall functionality of the Daikoku Network. By strategically encircling the star, Ring 1 optimizes its exposure to the radiant energy emitted by the star. The solar panels on the Daikoku-Class Agricultural Ships within this ring are carefully aligned to absorb the maximum amount of solar power.

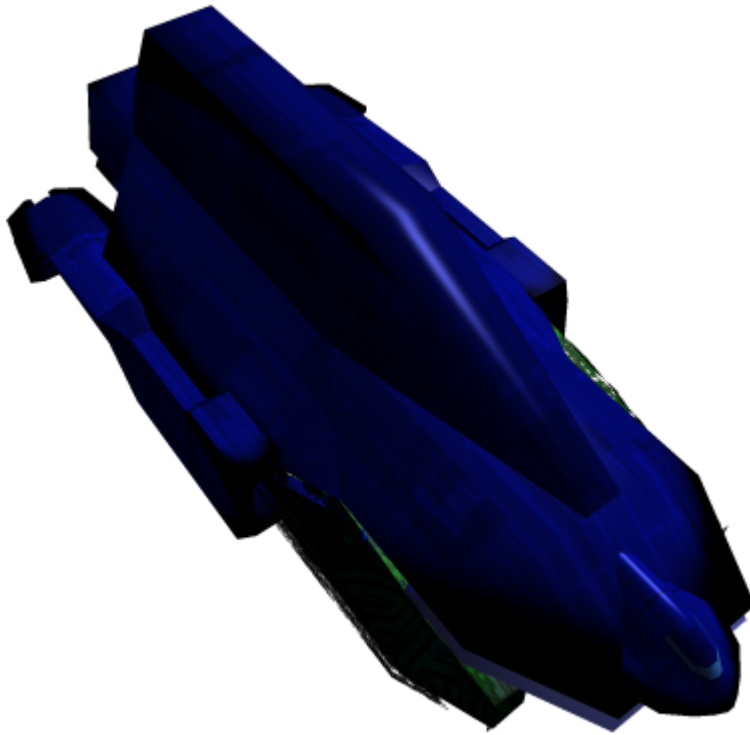
Additionally, the horizontal orientation of Ring 1 contributes to the creation of the simulated day and night cycle within the Daikoku Network. As the ships in this ring undergo synchronized spinning, the solar panels experience fluctuations in sunlight, facilitating the necessary cycles for optimal agricultural and operational conditions.

The positioning of Hitotsunoyubiwa demonstrates the precision and adaptability of the Daikoku Network, showcasing the innovative engineering solutions implemented to harness the star's energy effectively while maintaining visibility and functionality.

After 2 Years

The following rings will be made in two years after the Colonial Initiative Alliance Fleet's arrival. Tsūri (Ring 2) first then two years after that the others.

Tsūri (Ring 2)



Tsūri, or Ring 2, represents the next tier in the Daikoku Network, introducing a vertical orientation to enhance the network's efficiency. Unlike the First Ring, Tsūri is positioned slightly above, creating a multi-layered configuration that optimizes the utilization of the star's energy.

Noteworthy is the intentional one-hour time difference introduced in Tsūri compared to Hitotsunoyubiwa (Ring 1). This deliberate offset contributes to the overall synchronization and functionality of the Daikoku Network. The hour-ahead positioning ensures a staggered exposure to sunlight, providing a nuanced variation in the day and night cycles within the agricultural ships of Ring 2.

The vertical alignment of Tsūri showcases the adaptability of the Daikoku Network, allowing for diverse configurations that cater to the specific needs of each ring. This strategic arrangement highlights the precision engineering employed to create an interconnected system that maximizes agricultural productivity and operational efficiency throughout the YC-04-Proclycon System.

Surīr (Ring 3)

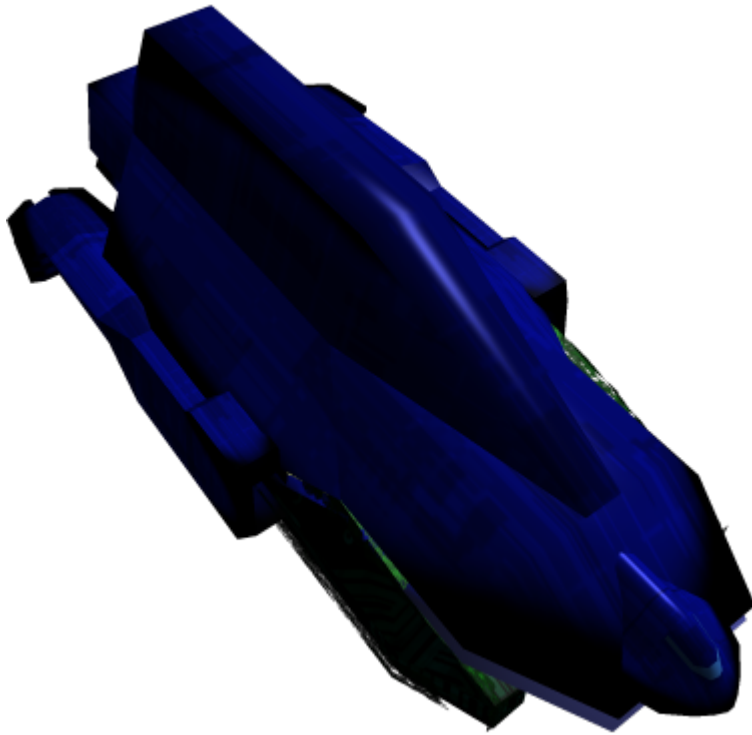
Surīr, or Ring 3, marks the uppermost tier of the Daikoku Network, situated above Tsūri (Ring 2) to form a progressively vertical alignment. This deliberate arrangement showcases the system's adaptability and precision in utilizing the star's energy for optimal agricultural and operational efficiency.



Distinguishing itself with a two-hour lead over Hitotsunoyubiwa (Ring 1) and a one-hour lead over Tsūri (Ring 2), Surīr introduces a nuanced time differential to further enhance the cyclic patterns within the Daikoku Network. This intentional staggered scheduling ensures that each ring experiences a unique exposure to sunlight, contributing to the finely tuned day and night cycles on the agricultural ships.

The vertical orientation of Surīr, along with its temporal distinctions, underscores the meticulous engineering that underlies the Daikoku Network. This tiered structure not only maximizes the absorption of solar energy but also highlights the system's adaptability to varying conditions within the YC-04-Proclycon System. Ring 3 stands as a testament to the innovative design principles employed in creating a cohesive and efficient agricultural infrastructure in space.

Shiri (Ring 4)



Shiri, or Ring 4, represents the uppermost tier in the hierarchical structure of the Daikoku Network, positioned above Surīr (Ring 3) to maintain the system's ascending vertical configuration. This deliberate placement emphasizes the adaptability and scalability of the agricultural infrastructure within the YC-04-Proclycon System.

Distinguishing itself with a three-hour lead over Hitotsunoyubiwa (Ring 1) and a two-hour lead over Surīr (Ring 3), Shiri introduces a further nuanced time differential. This intentional time stagger ensures that each tier of the Daikoku Network experiences a distinct and optimized exposure to solar energy. The result is a meticulously crafted system of day and night cycles that cater to the unique needs of each agricultural ship within Ring 4.

The progressive vertical orientation of Shiri, combined with its temporal distinctions, highlights the advanced engineering principles integrated into the Daikoku Network. Ring 4 stands as a testament to the adaptability and precision of this space-based agricultural infrastructure, showcasing its ability to thrive in the diverse conditions found within the YC-04-Proclycon System.

Gori (Ring 5)

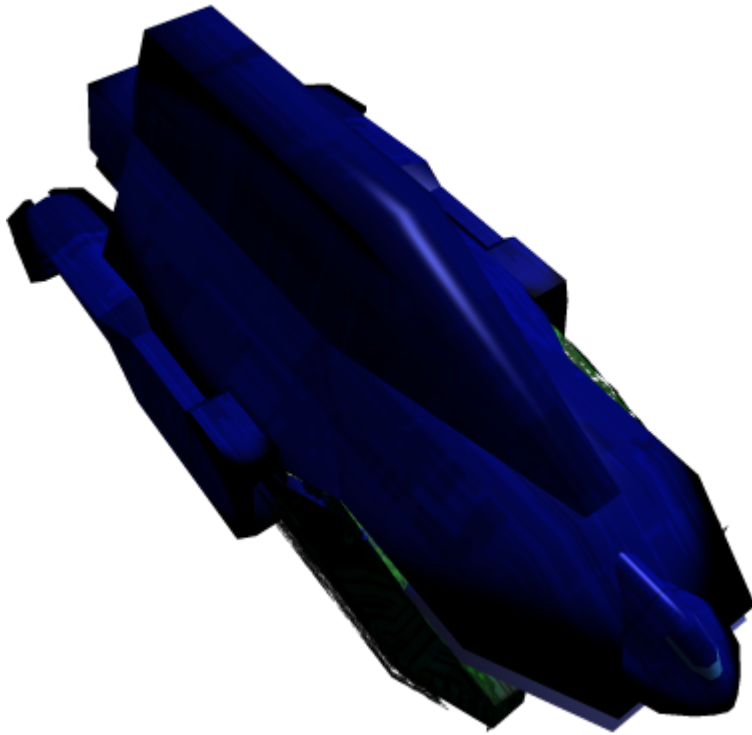
Gori, or Ring 5, marks the apex of the vertical hierarchy within the Daikoku Network, positioned above Shiri (Ring 4) to continue the system's ascending structure. This deliberate arrangement emphasizes the adaptability and efficiency of the space-based agricultural infrastructure within the YC-04-Proclycon System.



Distinguished by its four-hour lead over Hitotsunoyubiwa (Ring 1) and a three-hour lead over Shiri (Ring 4), Gori introduces a significant time differential to further optimize the exposure of each ring to solar energy. This intentional temporal stagger ensures that each level within the Daikoku Network experiences a unique and finely-tuned day and night cycle, tailored to the specific requirements of the agricultural ships within Ring 5.

The continued vertical orientation of Gori, coupled with its temporal distinctions, underscores the advanced engineering principles at the core of the Daikoku Network. Ring 5 stands as a testament to the scalability and precision of this space-based agricultural infrastructure, showcasing its ability to thrive in the dynamic and diverse conditions encountered within the YC-04-Proclycon System.

Rokuri (Ring 6)



Rokuri, or Ring 6, represents the pinnacle of the vertical hierarchy within the Daikoku Network, positioned above Gori (Ring 5) to maintain the system's ascending structure. This strategic arrangement underscores the adaptability and efficiency of the space-based agricultural infrastructure within the YC-04-Proclycon System.

Distinguished by its five-hour lead over Hitotsunoyubiwa (Ring 1) and a four-hour lead over Gori (Ring 5), Rokuri introduces a substantial time differential to optimize the exposure of each ring to solar energy. This deliberate temporal stagger ensures that each level within the Daikoku Network experiences a distinctive and finely-tuned day and night cycle, tailored to the specific needs of the agricultural ships within Ring 6.

The continued vertical orientation of Rokuri, coupled with its temporal distinctions, exemplifies the advanced engineering principles incorporated into the Daikoku Network. Ring 6 serves as a testament to the scalability and precision of this space-based agricultural infrastructure, showcasing its ability to thrive in the dynamic and diverse conditions found within the YC-04-Proclycon System.

Proclycon Station

Proclycon Station serves as the central hub within the Daikoku Network, where harvested crops and various products are transported for sale and distribution. This critical facility not only facilitates commerce within the YC-04-Proclycon System but also serves as a potential home for the Colonial Initiative Alliance Fleet.



In contrast to the tiered time differentials within the rings, Proclycon Station operates on a synchronized time system. This uniformity ensures efficient coordination for processing and distributing goods without the complication of time zone variations.

The station's bustling activities are organized through a well-managed system of work shifts. This approach allows for continuous operation while prioritizing the well-being of the workforce, ensuring rest and recovery periods. The collaborative efforts of the dedicated personnel at Proclycon Station play a pivotal role in sustaining the economic activities of the Daikoku Network and supporting the larger Colonial Initiative Alliance Fleet.

Proclycon Station stands as a testament to the careful balance between productivity and Colonial Initiative Colonists well-being within the advanced agricultural and commercial infrastructure of the YC-04-Proclycon System.⁶⁾

OOO Notes

[Charaa](#) created this article on 2023/09/11 15:14 using the namespace template.

- Daikoku Art by [Charaa](#) using Doga,
- Station art by [Andrew](#) using midjourney
- Approved by [Wes](#) 2024-03-24 1:42

Map Locations	
Map to Use	Kosuke Sector

Map Locations	
Map Display Name	YC-04-Proclycon
Map Coordinates	174, 1601
Map Importance	Minor RP Location
Map Marker	
Show label?	yes
Marker Anchor	Center Center
Places of the SARPiverse	
Opened/Settled (YE)	YE 45
Place Categories	star system

1)

with the crashed ship and the Mishuu and Aquatic alien corpses

2)

Food, metal, gems, water, etc.

3)

art from here <https://mdouglass.artstation.com/projects/5XZ5gO>

4)

0.78 x sol

5)

roughly 2 years

6)

Art by Andrew, also used as placeholder untill something better can be used

From:

<https://wiki.stararmy.com/> - **STAR ARMY**

Permanent link:

<https://wiki.stararmy.com/doku.php?id=places:ks04>

Last update: **2024/03/24 12:47**

