

Amatsu-Motoyoshi "Port Hachidori"

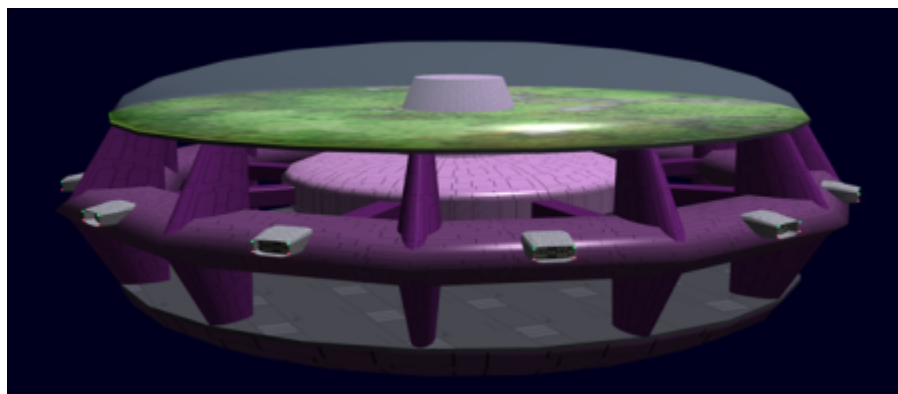
Amatsu-Motoyoshi was the third [Ge-H2-1a - Amatsu-Class Spaceport](#) to be constructed by [Geshrinari Shipyards](#) in [YE 33](#). It was finalized and activated by [Motoyoshi Hanei Kaisha](#) in [YE 34](#) and placed in the [Nataria](#). In [YE 41](#), it was relocated to the [Jiyuu System](#) under the [Yugumo Corporation](#).

About Port Hachidori

Hachidori is [Yamataian](#) for Hummingbird. The Hummingbird was the symbol of the [Fifth Expeditionary Fleet](#), which has been used again in honor of [Motoyoshi Clan](#) history.

Port Hachidori has served as the primary civilian space station in the [Jiyuu System](#) since it was positioned by the [Yugumo Corporation](#). It also serves as an orbital shipyard with its five [Ge-H3-1a - Sanza-Class Shipyard](#). It is a common stop for civilians and non-citizens in authorized transit through the [Yugumo Cluster](#) of the [Yamatai Star Empire](#).

Port Hachidori	
Class	Ge-H2-1a - Amatsu-Class Spaceport
Motto	"Within steps towards Destiny"
Location	Jiyuu System
Status	Online



Future Plans

In [YE 42](#) the [Yugumo Corporation](#) and [Geshrinari Shipyards](#) began [construction](#) on a [Ge-H1-7A - Kōdaina Minato-Class Orbital Installation](#) in the [Jiyuu System](#). The project was supposed to be completed by the end of the year, but due to shortages attributed to the [Kuvexian War](#) its progress was delayed as of the beginning of [YE 43](#).

When Port Jiyuu is completed, the [Yugumo Corporation](#) plans to move Port Hachidori to the [Shugosha System](#).

History

The History of Port Hachidori and it's shipyards is listed below.

- The station served as the Headquarters for [Motoyoshi Hanei Kaisha](#) from [YE 34](#) until [YE 41](#)
- In [YE 41](#) it was moved by the [Yugumo Corporation](#) to serve as the primary civilian space station in the [Jiyuu System](#).
- The [Yugumo Corporation](#) began producing ships in its shipyards that same year.

Notable Character Visitors or Residents

The following characters have visited this station:

- [Motoyoshi Eidan](#)
- [Motoyoshi-Ieyasu Taro](#)
- [Nakada Masuyo](#)
- [Takagawa Hitomi](#)

Notable Visitor Ships

Notable ships that have visited Port Hachidori are as follows:

- [ISS Shiori](#), the station serves as it's home port.
- [Takeda Fleet](#) ships often are seen in port here.

Port Hachidori Shipyards

The [Yugumo Corporation](#) builds ships at the shipyards. Port Hachidori has five [Ge-H3-1a - Sanza-Class Shipyard](#).

Notable Ships that have been built at Port Hachidori:

- All new [Starchaser III-Class Ferry](#) for [PAINT](#) were constructed here in [YE 42](#).
- Conversion of all salvaged and stockpiled [Ayana-Class Escort](#) into [Misha-Class Explorer](#) happened here in [YE 42](#).

Vehicle Complement

Port Hachidori has the following vehicles in its inventory.

- [Ge-V1-1a - Hoshou Fighter](#) (20)
- [Ge-T3-1a - Raba-Class Work-Pod](#) (40)

- [Ge-T1-2a - Hikiuma-Class Shuttle](#) (5)
- [Ge-T5-1a Cho-Class Shuttle](#) (5)

OOO Notes

This page was originally made by [Andrew](#). It was approved as part of the [Ge-H2-1a - Amatsu-Class Spaceport](#). [Andrew](#) updated this page on 01/04/2021.

Places of the SARPiverse

Place Categories	space station
-------------------------	---------------

From:

<https://wiki.stararmy.com/> - **STAR ARMY**

Permanent link:

https://wiki.stararmy.com/doku.php?id=places:amatsu_motoyoshi

Last update: **2024/02/25 13:38**

