

# Project Kyasshu - Kanmon

The Kanmon or (Gateway) was created as part of the [Scientific Studies Service \(SSS\) Project Kyasshu](#) it came online in [YE 31](#).

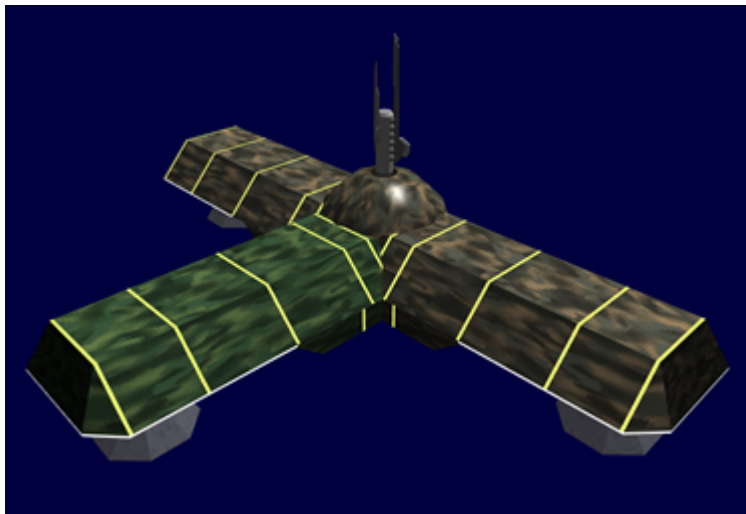
At the start of [YE 35](#) the project was closed with the [NMX](#) threat neutralized. Stations were redeployed.

## About the Kanmon

The *Kanmon* is the stopping point for all vessels proceeding to the stations in the [Project Kyasshu](#). Or returning to [Yamatai Star Empire](#) space. It is a key component in the security protocols implemented to protect the [Kyasshu](#). These protocols came about due to concerns about saboteurs, and zombies.

## History

The main components of this module came from the canceled fourth [Kisaki-class Starbase](#). It has the [Bay Control Station](#) and three of the [repair bays](#). The bays are only capable of docking and basic service. There is no repair or construction components.



## Mission

The *Kanmon* is a facility that all [Tansaku-class Science Vessels](#) must pass through. This is part of the Security in place for the [Project Kyasshu](#). Only select individuals are authorized to know the current location of the stations. Personnel with a need to know fall into these categories.

- Tansaku crew: Captain, First Officer, Chief of Security
- Directors of: Tanken, Gakuin, Tansaku
- Shuji [Saiki Kouan](#)

## Location

The *Kanmon* is located on the surface of the first planet in the [SX-03](#) system.

## Procedures

### Personnel Screening

All ships entering the [Kyasshu](#) arrive at *Kanmon* and dock in the bays. All personnel are then escorted off the vessels and taken to a holding area. The personnel are then run through a battery of exams and biometric scans. Once complete they are allowed to return their vessel. Biometric scans include EEG baseline patterns which are unique to each individual and are created when personnel first come into the [SSS](#)

### Flight Plan

Personnel from the facility come on-board and load an encrypted flight plan to the vessel's destination. They provide the Captain, First Officer, and Chief of Security with the appropriate access code to decrypt the destination. The [MEGAMI](#) of the ship takes care of navigation to the destination coordinates. The navigator console will not display the destination data. No vessel that has not been through Kanmon is allowed to dock with any of the [Kisaki-class Starbase](#).

### Ship's Exiting

Ships leaving the Kyasshu must stop at Kanmon and personnel come on board to wipe sensor and navigation logs to ensure the location remains secure.

## Statistical Data

Organization Using item: [Scientific Studies Service \(SSS\)](#) Class: Kisaki-Module Nomenclature: Ke-H4-M3102x Type: Security Designers: [Ketsurui Fleet Yards, \(SSS\)](#) Manufacturer: [Ketsurui Fleet Yards](#)

## Crew and Accommodations

Crew: 90

- 20 Crew
- 20 Technicians
- 20 Medical
- 30 Security

The *Kanmon* has permanent accommodations for 90 personnel.

## Dimensions

### Ship Bays

- Length: 492 meters ( 1,613.76 feet)
- Width: 246 meters ( 806.88 feet)
- Height: 92 meters ( 301.76 feet)
- Decks: 23 (4 meters each)

### Damage Capacity

See [Damage Rating \(Version 3\)](#) for an explanation of the damage system.

Hull: 30 (Per module) Shields: 30 (Threshold 2)

## Unique Attributes

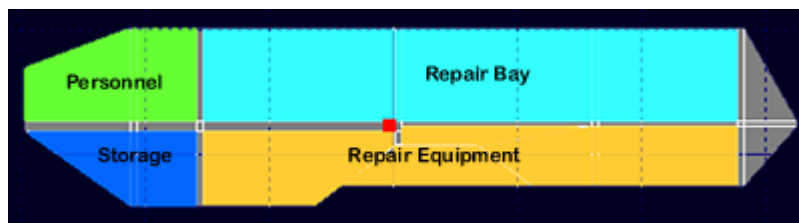
The *Kanmon* has most of the features of a [Ship bay](#) section of a [Kisaki-class Starbase](#).

For increased security all shutters on the *Kanmon* have been replaced with [Forcefield-Nested Isolation Doors](#)

The following are unique aspects of the *Kanmon*:

### Ship Bays 1 & 2

These are structurally the same as the ones on the [Kisaki-class Starbase](#). The personnel staging areas are used as quarantine holding areas where the personnel undergo medical examination by *Kanmon* personnel. These bays have none of the repair and manufacturing equipment found on the [Kisaki-class Starbase](#).



### Ship Bay 3

The green ship bay is Bay 3. The outer portion of the repair bay has been converted to a large [shuttle bay](#). The facility being immobile maintains a group of T7 Shuttles to evacuate the facility.

The rest of the module consists of:

- [Mess](#) for 90 people
- [Galley](#) for Mess
- [45 Living Quarters](#) configured like those on [Tansaku-class Science Vessel](#).
- [Armory](#) with [SSS Standard Armory](#)
- [Fitness Area/Recreation Room](#) similar to those on the [Tansaku-class Science Vessel](#)
- [Autonomous Medical Treatment Center](#)

## Bay Control Station

The only changes to the Bay Control Station is the installation of a [CIES computer, communications array and sensors](#).

## Vehicle Compliment

The *Kanmon* has a group of shuttles for emergency use.

- 4 [Ke-T7 "Raccoon" Transport Shuttle](#)

## OOC Notes

Authored by [Nashoba](#) and approved by [Soresu](#) on Dec 26, 2009 <sup>1)</sup>

<sup>1)</sup>  
<https://starmy.com/roleplay-forum/index.php?threads/sss-kanmon-gateway.4725/>

From:  
<https://wiki.starmy.com/> - **STAR ARMY**

Permanent link:  
<https://wiki.starmy.com/doku.php?id=faction:yamatai:sss:kyasshu:kanmon>

Last update: **2023/12/21 05:26**

