

Gi'Gin Swarm Tank

The Gi'Gin Swarm Tank is a light and agile tankette made for a single driver. It was designed in [EE002](#) and put into service in [EE004v](#), it is primarily used by the [Youth Corp](#) and during some strike operations carried out by the [Shukara navy](#).

About the Gi'Gin Swarm Tank

The Gi'Gin is a unique tank, among the arsenal of the Neshaten navy it is the only tankette class vehicle. Unlike traditional tanks which feature heavy armour and firepower, the Gi'Gin Swarm Tank sacrifices much of its armour plating and firepower for speed and manoeuvrability, allowing it to harass groups of enemies while being able to evade enemy firepower. The tanks twin engines make it quite fast, while its top mounted cannon means it can damage most lightly armoured personnel.

Designed to be deployed in large groups, the Gi'Gin can be launched from within the air where its pilot can then use the engines to soften the landing, its small size also means that it has a smaller radar cross signature making it difficult to detect.

Key Features

The design of the Gi'gin has one major key feature, its main cannon is mounted to the hull and is not a turret and therefore cannot rotate. The high agility of the vehicle counteracts the need for a rotating main gun and helps to strengthen the overall design while keeping the size smaller.

History

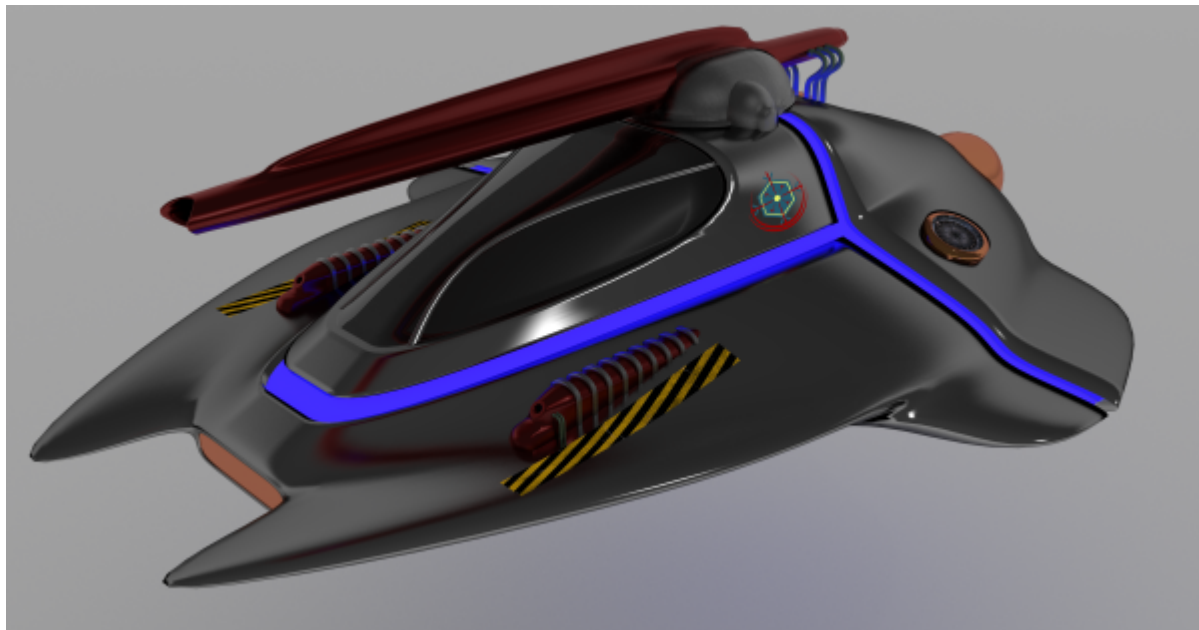
In EE002, the Youth Corp realized that it needed a tank that was more accustomed for its members; something that was fast, agile, and could harass an enemy force or even cause confusion - enough to allow the prime navy to get involved. The concept behind the tank was brought up by Su'krin Yii'see, alongside suggestions sent in by various Youth Corp members; the current design was selected due to being aerodynamic and allowing it to perform feats that other tanks in the navy can't.

Su'krin attached a large cannon to the vehicle, but made it so that the cannon couldn't turn; this he felt wasn't an issue due to the tanks rather quick turning speed which meant that the driver could easily bring the cannon to bare onto enemy forces. In order to deal with up close enemies, the scientist and his team of designers placed two [VU1C Medium Ballistic Repeater](#) that flanked the canopy.

With the emergence of [Kirinov Automotive Servicer and Supplier](#) in EE004, a deal was brokered with the Volunteer navy's engineers allowing the Kirinov corporation to take over the construction contract.

Appearance

The Gi'Gin appears as a small elongated rectangle with two protruding spines on the front and wings on the side. It has two bulbous domes on the back that house the engines and a stationary cannon on top.



3D model

designed by [Kyle](#)

Statistical Information

Below is a list of basic statistical information for the Swarm Tank.

- Organization: [Shukara Volunteer Navy](#)
- Type: Tankette
- Class: Gi'Gin class
- Designer: Su'krin Yii'see
- Manufacturer: [Kirinov Automotive Servicer and Supplier](#)
- Production: Made to order with limited warehouse supply
 - Price: Private Contract
- Crew: 1
 - Emergency Capacity: 2
- Width: 3m
- Length: 5m
- Height: 3m

Speeds

Below is a basic list of speed information for the Swarm Tank.

- Ground speed: 100km/h
- Range: 400km¹⁾
- Lifespan: 5 years

Damage Capacity

With light armor the Swarm tank swaps weight and strength for speed and agility.

DRv3 Tier: 4 - Light Armored Vehicle

Cockpit

The cockpit is small and in some cases, rather cramped depending on the age of the soldier, the cockpit uses the [Erme'negilde Holographic System](#) for operational controls and allows the pilot to easily see almost in a complete two eighty degree.

Weapons Systems

The Gi'Gin is equipped with a single [HN-10-K Plasma Blaster Cannon](#) that is restricted to firing only in Mode 1. It also has two built-in [VU1C Medium Ballistic Repeater](#)'s for close range combat.

- Plasma Blaster Purpose: [Tier 3](#) Heavy Anti-Infantry
- Ballistic Repeater Purpose: [Tier 4](#) Light Anti-Armor

Onboard Systems Descriptions

The following lists its onboard systems.

Structure

The Gi'Gin is made out of reinforced titanium that serves as the main structure of the vehicle.

Armor

The first armor layer for the Gi'Gin is made out of [Crynatorium](#), which affords it protection from light to medium weapons for a short duration of time.

Shield

The Gi'Gin is the smallest tank to be equipped with a [Ta'tagen Field Generator](#), providing it with a defensive barrier equal to its physical armor.

Life Support

The Gi'Gin is equipped with the following life support functions.

Oxygen Tanks

There are four onboard oxygen tanks that provide the pod with three hours of oxygen, these tanks can be hooked up to the soldiers body suit.

Air Scrubbers

Air Scrubbers help to filter out pollution and also to clean the air, they work in similar fashion to air recyclers which also do the same thing.

Computer System

Uses a [Cordecon Quantum Computer](#) for all of its computer functions.

Propulsion

Is equipped with two [Fi'nein Pulse Engine](#).


Sensors

The Gi'Gin is equipped with the same kind of [sensors](#) commonly found on starfighters, along with targeting systems for its onboard weapons.

Cargo Capacity

There is a storage area to the left and right and just behind the canopy to store medical kits or extra ammunition for the guns.

Standard Equipment

Comes standard with a [Fire Extinguisher](#) , first aid and repair kit and 10x [Military Field Rations](#).

OOC Information

This article was originally created by [Kyle](#) in 2015 but was picked up by the second faction manager [club24](#) and updated on 23/02/2019.

1)

reactor requires cooldown after 4 hours

From:

<https://wiki.stararmy.com/> - **STAR ARMY**

Permanent link:

https://wiki.stararmy.com/doku.php?id=faction:neshaten:vehicles:gi_gin_swarm_tank

Last update: **2023/12/21 04:25**

