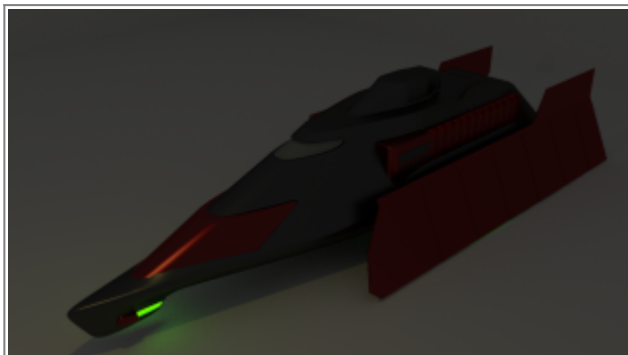


Cu'hee'zeen APT



General

| | |
|----------------------|---|
| Class: | Cu'hee'zeen |
| Type: | Armoured Personnel Tank |
| Designer: | Fini'she Shi'shi'tahe |
| Manufacturer: | Shukara Armaments and Manufacturing |
| Fielded by: | Kingdom of Neshaten |
| Organizations using: | Kingdom of Neshaten , Shukara Volunteer Navy , Or'ion |
| Production: | Multiples |
| Price: | 54,000 Rn |

Crew

| | |
|--|----|
| Crew: | 2 |
| Passengers: | 12 |
| Passengers(With internal equipment racks removed): | 24 |
| Emergency Capacity: | 24 |

Dimensions

| | |
|---------|------------|
| Length: | 9.6 Meters |
| Width: | 3 Meters |
| Height: | 4 Meter |

Propulsion and Range

| | |
|-------------|---------|
| Land Speed: | 98 Km/h |
|-------------|---------|

Durability and Maintenance

| | |
|-------------------|-------------|
| Service Lifespan: | Ten years |
| Refit Cycle: | When needed |

Damage Capacity

| | |
|--|------------------|
| See Damage Rating (Version 3) for an explanation of the damage system. | |
| Hull: | 20 |
| Shields: | 25 (Threshold 4) |

Systems Information

| | |
|----------------|----------------------------|
| Superstructure | Dishe'trum |
| Armour System | Cynestran |

| | |
|-----------------------------|--|
| Reactor | 2xSmall Generator |
| Computer and Sensor Systems | Cordecon Quantum Computer, Neshaten Scanner Array Suite. |
| Shield Systems | 2xTa'tagen Field Generator |
| Life Support Systems | Atmospheric Control Systems |
| Propulsion | 1x Luxiton Gravitic Engine 1x Fi'nein Pulse Engine |
| Stealth Systems | Sensor Dampening Technology |
| Weapon Systems | |
| None | |

The Cu'hee'zeen Class of armoured personnel carriers that was designed by the Navy in response to the potential threat of alien life, it was put into service in ER 002-v.

About the Shi'shi'tahe

The Cu'hee'zeen is an APC, although one can also refer to it as an APT - Armoured Personnel Tank - this is because the vehicle has the armour plating of a tank, but the speed of a light tank; its major drawback is that it lacks any kind of weapons - making it quite vulnerable to enemy attack, provided the tank being used by an infantry force is the default variant; several variants of this tank have been designed based off the default Cu'hee'zeen.

Equipped with heavy armour plating and a twin-shield generator, the Cu'hee'zeen is ideal for moving groups of infantry into heavily defended area's or into areas that has a lot of enemy fire being thrown about; its anti-gravity based engines allow it to maintain a high rate of speed on flat terrain but in area's with lots of rubble or hills its speed suffers. There are two entry points for the vehicles, one forward and another aft; the forward point opens up to like the jaw of an animal - providing protection to infantry as they file out. On the other hand, the aft entrance is a boarding ramp that lowers down onto the ground and unlike the forward entrance the aft ramp allows for enemies to fire directly into the cabin - thus drivers are trained to never deploy infantry 'toward' the enemy. There are side hatches that soldiers can open only from the inside that allows them to fire out at enemy troops, these hatches are made out of the same material that protects the tank, by doing this a Cu'hee'zeen can began a rolling infantry fortress on the battlefield.

History

When the Gam'trosha's first exploratory mission revealed the existence of hostile planet life, the Navy realized that they had to come up with a solution to allow their forces more ease of movement in potentially hostile situations, although a tank had been deployed in that instance - the navy knew that the presence of a tank might have potentially caused the incident. In order for such incidents to not happen again in the future, or to at the very least reduce their likelihood, the Cui'hee'zeen was created.

Designed by Fini'she Shi'shi'tahe, the Cui'hee'zeen was conceived from the ground up to be a beast of a

vehicle that can provide the best amount of protection to those onboard while making it less likely of a threat to others. This comes not only from its lack of weaponry, but also from a series of stealth based systems that reduce its energy and heat signature. Some varieties of the Cui'hee'zeen have a cloaking device.

Fini'she designed several additional variants of the Cui'hee'zeen, although those are still in the design phases.

Vehicle Layout

The following lists compartments unique to this class of vehicle.

Troop Compartment

Taking up the majority of the vehicle, the troop compartment has jump seats on the sides with enough for twelve people, six on either side. Equipment racks are in the centre, allowing soldiers to easily stash their gear in shock resistant bins or harnesses so that the equipment isn't tossed around during tense and heavy combat. The equipment racks are removable, and allows for twelve additional jumpseats to be placed in the centre - increasing the number of people that can be in the compartment by twelve, for a maximum of twenty four.

A hatch on the ceiling provides access to a small compartment that houses the tanks para-scope camera.

Drivers Compartment

Located on the front top of the vehicle, the drivers compartment is actually apart of the troop compartment, allowing the drivers to easily talk or warn those behind him; this also makes the drivers area accessible to any of the three races that make up the Kingdom. A large window provides a 160 degree view of what is in front of the vehicle, although if needed, a blast shield can be deployed over the window to protect the drivers - and those inside - from outside fire.

When the blast shield is deployed, the drivers can opt to use a holographic navigation system to see everything around them.

Superstructure

The vehicles main superstructure is comprised [Dishe'trum](#), and makes up almost 90% of the vehicles skeleton. Because of the composition of the materials used in its structure, the insides of the vehicles have a faint light bluish glow to them.

Armour

Its main form of protection is armour plating in the form of [Cynestran](#). Cynestran covers all area's of the vehicles with the exception of its undercarriage, where only patches of the armour exist. To provide additional protection to the vehicle, side armour sheaths can be added.

Optional Equipment

Additional Equipment can be added to the Cui'hee'zeen, this equipment adds weight and thus reduces the vehicles top speed and turning capability, unless otherwise specified.

| Equipment | Description | Purpose |
|----------------|--|---|
| Armoured Sheet | Pure armour plating that can be attached to the side of the vehicle. | Provides additional protection to disembarking troops, while also, providing protection to vital equipment. Add's an additional DR 5 to the hull rating |
| Ram | A forward mounted object made out of hard metals. | Allows the vehicle to ram through lightly armoured defenses or even into other vehicles. |

OOC

Article created on 2015/07/06 by [Kyle](#).

Approved on August 18, 2015¹⁾.

¹⁾
<https://stararmy.com/roleplay-forum/index.php?threads/neshaten-cuheezeen-armoured-personnel-tank.17149/>

From:
<https://wiki.stararmy.com/> - **STAR ARMY**

Permanent link:
https://wiki.stararmy.com/doku.php?id=faction:neshaten:vehicles:cui_hee_zeen_apr

Last update: **2023/12/27 15:03**

