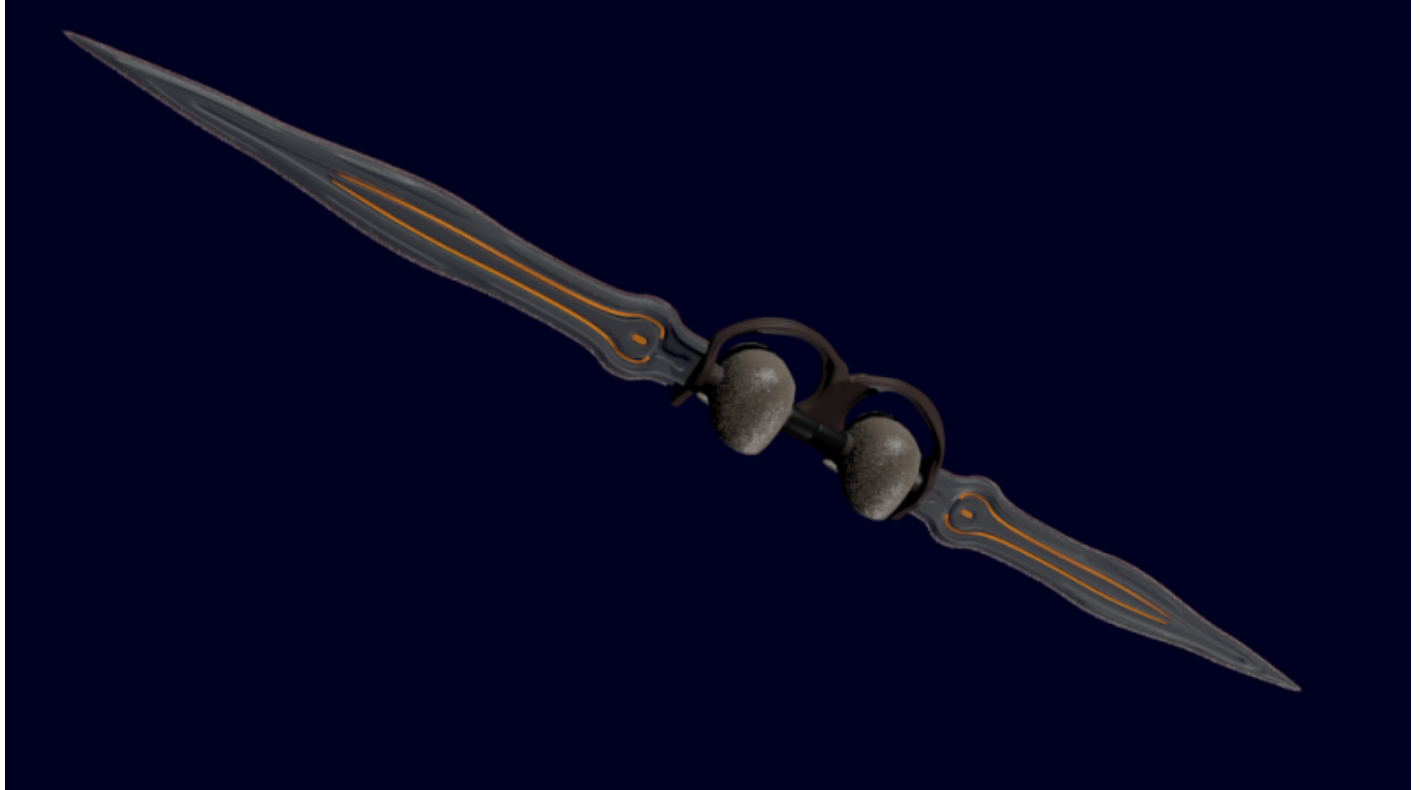


# Curotri Twin Blade

The *Curotri* is a twin blade that was created in ER 498, for use by both military and civilians, it was designed to be wielded by those experienced in the art of *Kentro'lass*.



A twin blade known as the Curotri, it was designed to function well with the [Kingdom of Neshaten](#) Swordsmanship style known as [Kentro'lass](#). The sword was designed by the master of the Kentro'lass style in the year ER 498, at the time it was viewed as an unnecessary weapon, to unwisely and difficult to handle but also a danger to the person using it. Because both sides of the blade are sharp, there is no dull point, anyone misusing the blade could end up cutting their own limbs off due to misplaced movement of the sword itself - or worse, even cause their own deaths.

The Curotri was intended for use by masters of the Kentro'lass fighting form, although it also finds use in the hands of Swordsmasters: individuals often trained to utilize two blades simultaneously. Beyond that, very few individuals prove themselves capable of wielding it safely.

There are three versions of this blade however, one that is sharp on both sides, one that is sharp on only one side (typically used by those still trying to master it) and a practice blade, which is dull on all ends. There are cuffs around the area of the hilt to help protect the user from other melee weapons along with a melee guard.

## Specifications

- Name: Curo'tri

- Nomenclature: Ne-W2-A1
- Type: Twin-sword
- Role: Anti-personnel
- Length: 42.8 inches
- Mass: 5 kg average
  - Price: 1320 Rn (400 Rn for practice blade)
  - Damage: 3 PDR ([Damage Rating \(Version 3\)](#)) (1 PDR for practice)
  - Blade Composition: The blade is made out of two parts [Crynatorium](#) and two parts Titanium.

From:  
<https://wiki.stararmy.com/> - **STAR ARMY**

Permanent link:  
[https://wiki.stararmy.com/doku.php?id=faction:neshaten:curotri\\_twin\\_blade](https://wiki.stararmy.com/doku.php?id=faction:neshaten:curotri_twin_blade)

Last update: **2023/12/21 00:59**

