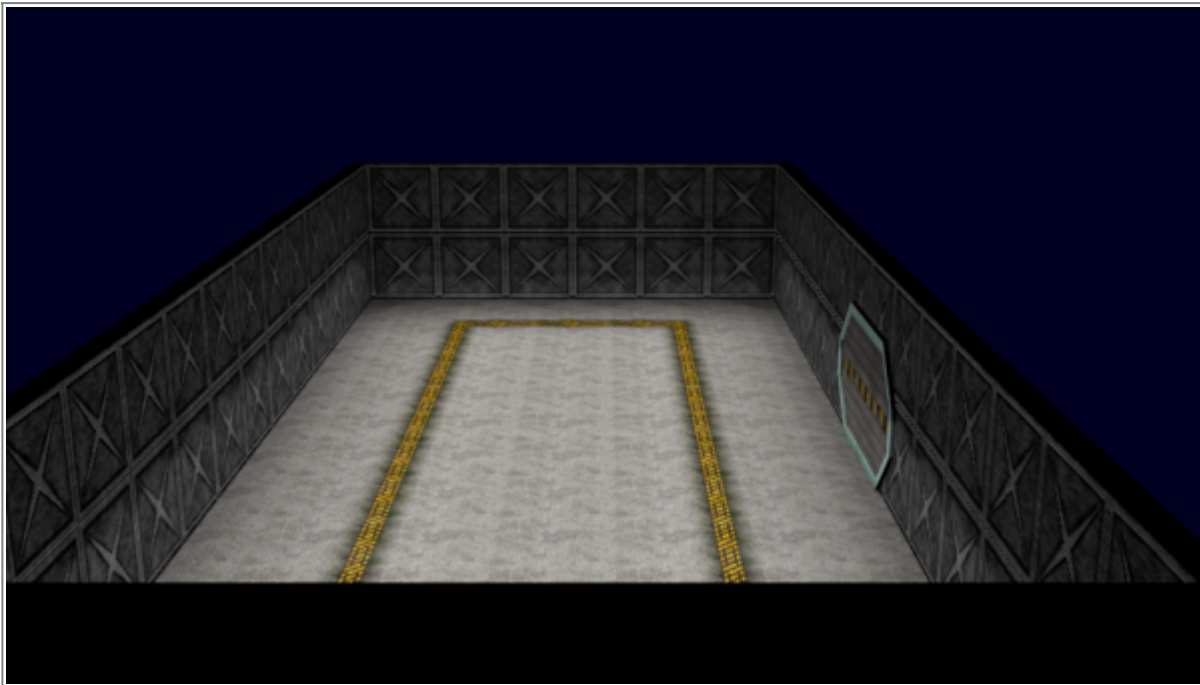


# Neshaten Main Cargohold



Standard Small Cargohold typically found on small ships

The standard [Neshaten](#) Cargohold is used for storing non-perishable items such as repair materials, parts, and tools. The hold size depends on what class of vessel it is on or the station.

In medium to large cargoholds, there are overhead gantries for crew to walk upon, with cranes used to move items from one location to another while in a gravity based environment. The bay is often in zero-g, to make moving cargo easier. The crane is controlled by a remote controller and can be fitted with either magnetic clamps, or standard pressure clamps for gripping cargo-containers.

The floor is made out of grated metal plates, while the walls are black with padding on the sides to ensure that cargo that shifts doesn't damage the walls. Gravity clamps are used to help secure cargo for transport.

The hold can be partitioned off to serve as dedicated areas for storage, an example being one area of the hold being dedicated to the storage of repair parts, while another could be for tools or mission-specific equipment.

From:

<https://wiki.stararmy.com/> - **STAR ARMY**

Permanent link:

[https://wiki.stararmy.com/doku.php?id=faction:neshaten:components:cargo\\_hold](https://wiki.stararmy.com/doku.php?id=faction:neshaten:components:cargo_hold)

Last update: **2023/12/21 04:24**

