

Ac-K1-1a Sehayah SandCrawler

(Pronunciation: Sea-High-Yah)

The Sehayah was designed to better facilitate travel across desert regions. Utilizing innovative technologies and the Iromakuanhe's penchant for unorthodox design methodologies to achieve this.

About the Ship

The 'Sehayah', meaning 'Desert Spider' in is a sandcrawler utilized to traverse the oft times dangerous and harsh expansive desert known as [The Nuocr Expanse](#) or any desert for that matter. Based on older tried and true designs ment to survive the harsh conditions of the desert and incorporated into the overall design.

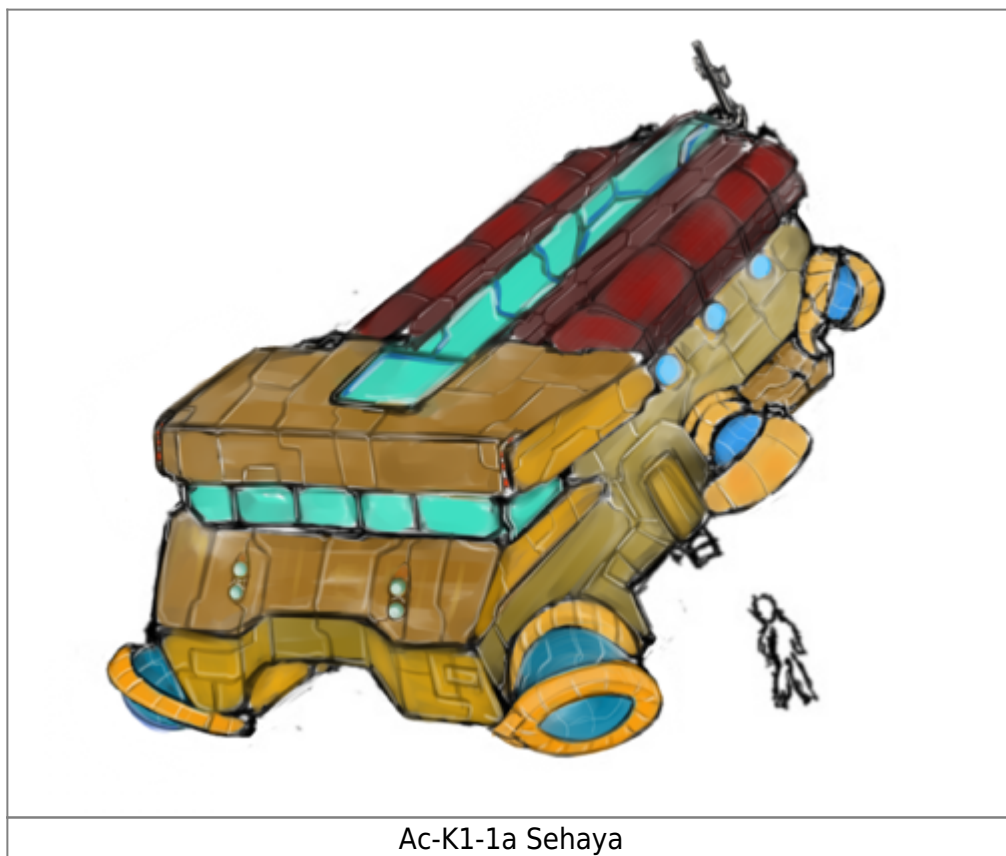
Key Features

- All-Terrain Vehicle
- Rugged and Reliable
- Long Range
- Decent Cargo Capacity for size including living accomodations

Mission Specialization

- Travel
- Travel HARDER

Appearance



Ac-K1-1a Sehayasandcrawler

History and Background

Originally, travel over the sands was done by simple hovercraft. It was done so until [Grav Lift](#) systems became increasingly commonplace and the first prototype craft were developed in the early [AR 700's](#). The first trials showed promise over the normal hovercraft design as the same problems plaguing the hovercraft (chiefly the fine and coarse sand of the expanse upon the skirts and lift fans of the craft) were overcome by the enclosed system. One of the first series of these new, lifter assisted vehicles was called the 'Sehaya' or "Desert Spider" in the [Common Tongue](#) due to the spider like lifter funnels it utilizes. The Sehaya however still utilizes certain design characteristics of the earlier hovercraft design schemes. Well over one hundred and fifty years old, the design has become a mainstay of [Ahmida Civiltech](#) after the original designing firm went belly up (And thusly the design being acquired.) and has been receiving both subtle and more encompassing upgrades to systems and materials utilized, but still adhering to the same design aesthetic as the original.

Statistics and Performance

General

Class: Ac-K1-1a Type:Ground Vehicle Designers: Ahmida Civiltech Manufacturer: Ahmida Civiltech
Production: Full Production Fielded by: Astral Commonwealth, Civilian Usage

Passengers

Crew: Usually 1 Driver is only required. Maximum Capacity: Normal capacity allows for up to five individuals to be situated comfortably. Maximum is around 12 but would be stifling and cramped.

Dimensions

Length: 11 meters Width: 7 meters Height: 4.5 meters

Speed and Range

[Lifter System](#) Maximum Speed: 198 km/h [Lifter System](#) Cruising Speed: 105 km/h

Damage Capacity

- Hull: 12 (Mecha)

Integrated Systems

Hull and Chassis

Chassis

The chassis is primarily constructed of Aluminum/Titanium Alloy providing strength while retaining a lighter overall weight. Wiring as well as some systems are built in and around the chassis.

Armor Type: None Structural Points: 2

Exterior Hull Paneling

[Cerocrete Panels](#)

Armor Type: Light Structural Points: 10

Power Sources

Primary Power

The primary source of power comes from a series of [Zaiflar Supercapacitors](#) which power all the systems aboard the Sehayas.

Backup Power

In addition to the main power supply is a redundant backup source that acts as a recharge method while on the move. Utilizing a series of solar panels borrowing some materials shared in common with the [Zeinur Solar Disk](#) which are deployable during the daylight hours. These collect solar power to recharge spent capacitors as well as taking advantage of the ambient temperature by providing a means of thermal energy collection which is converted into mechanical energy providing additional power.

Computer and Electronic Systems

Civiltech ANIOS

[Civiltech ANIOS](#) are not actually true NI, but rather AI built along the same parameters, using inorganic components. They are found exclusively in the civilian designs produced by [Ahmida Civiltech](#), primarily land vehicles and aircraft. They allow the pilot to experience a smoother ride and can automatically assist less experienced personnel, and compensate for certain conditions when it is beyond their abilities.

Communications Suite

The Sehayas's radio communications gear is a high powered system which allows it to cut through the dangerous Nuocr Sandstorms that can and do happen in the expanse, as well as Expanse particle geysers that can spray forth ambient particulate matter which hold a slight charge to them that can interfere with low powered communications gear, and even unprotected systems should an unlucky vehicle come in within close proximity to one.

Communication System	Type	Broadcast Pattern	Range	Detectability
Radio	Visible EM	Radial	100 KM	Medium

Sensor Systems

Utilizing the same methods as the radio systems, the radar systems are also sufficiently powerful to cut through most interference from Expanse Storms and particle geysers.

Sensor Type	Detection Method/Pattern	Range (Vehicle) Active/Passive	Range
RADAR	Radio Waves, Radial	200 KM / 100KM	High/Moderate

Fiber Optic Network

Throughout the Sehayla are fiber optic cables which are used as a sort of wiring for inter communications, as well as to keep all the systems networked. They're largely immune to electromagnetic interference which make them ideal for the setting including their reliability and amount of data processing they allow.

Global Positioning System

Included aboard the sand crawler is an integrated GPS system that is tied into a series of satellites directly in orbit of the given planet. They offer everything from your current position, maps of the area, and even weather reports.

Air Conditioning/Heating

Even with the innate properties of the cerocrete paneling, it can become quite stifling within the confines of the sand crawler. Ahmida, ever thinking ahead, included a modest accommodation in this regard, a air conditioning and heating unit. Laced throughout the sand crawler are vents that allow both warm or cool air to permeate the enclosed environment. External filtration of air brings in fresh air, filtering out sand, particulate matter and the like before circulating it into the central system to provide warmth or cool environs for passengers.

Propulsion

[GE Lifter Funnels](#)

The Sehayla features a series of six 'leg's fitted with a number of GE Liftspheres that allow it to maneuver quite well on even the uneven and occasionally rocky terrain of the Expanse, which has been known to pose problems for low-flying hover vehicles. In essence, each leg acts is able to move and increase or decrease it's output to compensate for shifts in terrain while avoiding damages to the hover system.

Interior Amenities

Refrigerator

The refrigerator of the Sehayla is held within a revolving cylindrical shell situated in the middle of a series of chairs. When in use the top portion of the cylinder folds out into a round table. Voice recognition software allows a person to simply say the name of something they want that is within the food and drink storage where a coiled robotic arm is held deeper within the cylinder plucks it out for the person placing it in front of them before returning to its place. The surface of the 'table' can be used as a plate in

addition to a table as it is quite germ/bacteria free being routinely cleaned after each use.

Left over food or drinks are sterilized, and recycled into a nutrient rich paste commonly eaten within the Commonwealth as a cheap and reliable food source. Taste can vary but is usually quite subtle with more of a neutral or bland taste to it.

Bedding

Two twin sized beds adorn the rear of the living compartment of the Sehayas which comes standard. However upon request this can be switched out for a single queen size and a twin, however it would be rather cramped. Included are also two large couches that can be stretched out and used as beds in addition to the single couch near the main compartment.

Entertainment

Viewscreen

The standard Sehayas comes with an overhead holographic emitter system capable of projecting four screens at once be it a singular, or simultaneous broadcast of the same shows or different. The screens can either form into a hollow box, side by side, or independent both near the user or further away depending on comfort level. To ensure that the sounds of independent programming or activities don't clash with one another four sets of specially designed headphones and or ear (horn) bud phones are provided. The system is voice activated.

Surround Sound Stereo

Tied into the radio system of the Sehayas is a surround sound stereo system for listener enjoyment of various radio broadcasts. Speakers are overhead, usually small but capable of putting out enough noise to 'Wake the Dreamers'.

- *Note: The headphones supplied by Ahmida Civiltech may also be used in lieu of the overhead speakers.*

Bathroom

Shower/Bathtub

The shower is what one may find in such a vehicle except it also has a built in bathtub making it a bit of a combo package. It includes a small water heating/cooling system that pumps it directly from its own tank that contain a small amount of a [Prajna](#) variant that eats away at dead skin cells, mends minor cuts, and assists in the cleansing process by breaking down some of the dirt. Water is drained into a pseudo [BHS](#)

which converts the waste product into more of the solution and refreshes the water.

Toilet

Kind of self explanatory...However features include,

- Heated Seat
- Waste Collection within pseudo **BHS** to be broken down
- Overhead automatic air freshener dispenser

Sink

It's just a sink. With a medicine cabinet in front.

Seating

Seating aboard the Sehayya is built for comfort and durability. Materials usually range from leather to some sort of cloth made to stand up to the rigors of constant use. In the main cockpit are two seats with armrests a cup holder built into each. Typically these are uniform in material construction and coloration. Other seating within the Sehayya range from the couches within the main living area to the stools of the kitchenette.

Driver's Compartment



Conceptual Art Of The Standard Compartment

The spacious driving compartment is sectioned off from the rest of the Sandcrawler with a single door as the only entry or exit point unless it is an emergency in which case an emergency escape hatch is located on the ceiling with a ladder attached to climb out. The compartment itself is usually quite spartan, Ahmida typically leaving it up to the consumer to decorate or modify at their discretion. The sole item of the compartment they tend to expend effort on is the driver's seat. The seat itself is genuine [Herditan Leather](#) with arm rests. The material within the seat is typically a form of memory foam that conforms to the driver's body providing ample comfort during the long treks.

The main console bank is located center of the compartment in which the Sehayas is controlled from. The design diverts from the normal practice of utilizing the Iromakuanhe [entry ports](#) as a means of innately controlling the vehicle from a dedicated immersion system. Instead it features a more conventional system which utilizes a steering wheel and pedal system for turns, acceleration and braking. The relative height of hovering is controlled automatically by the on board [ANIOS](#) system as is power regulation and the on board sensor equipment. The console bank includes a digital speedometer, power meter¹⁾ and panel for the radar system. There are a few more features upon the console these more for minor purposes, or recreational use such as direct access to the radio, a communication's panel with on board mic and built in hi-resolution camera for video conferencing and a nifty temperature controlled cup holder²⁾.

The windows of the Sehayas's driver's compartment are constructed of [ARTC Material](#) for its innate properties and resistance to damage³⁾.

¹⁾

Think fuel gauge

²⁾

No spills!

³⁾

In fact all windows of the Sehayá are made of it.

From:

<https://wiki.stararmy.com/> - **STAR ARMY**

Permanent link:

[https://wiki.stararmy.com/doku.php?id=faction:iromakuanhe:sehayá_sandcrawler](https://wiki.stararmy.com/doku.php?id=faction:iromakuanhe:sehay%C3%A1_sandcrawler)

Last update: **2023/12/21 00:59**

