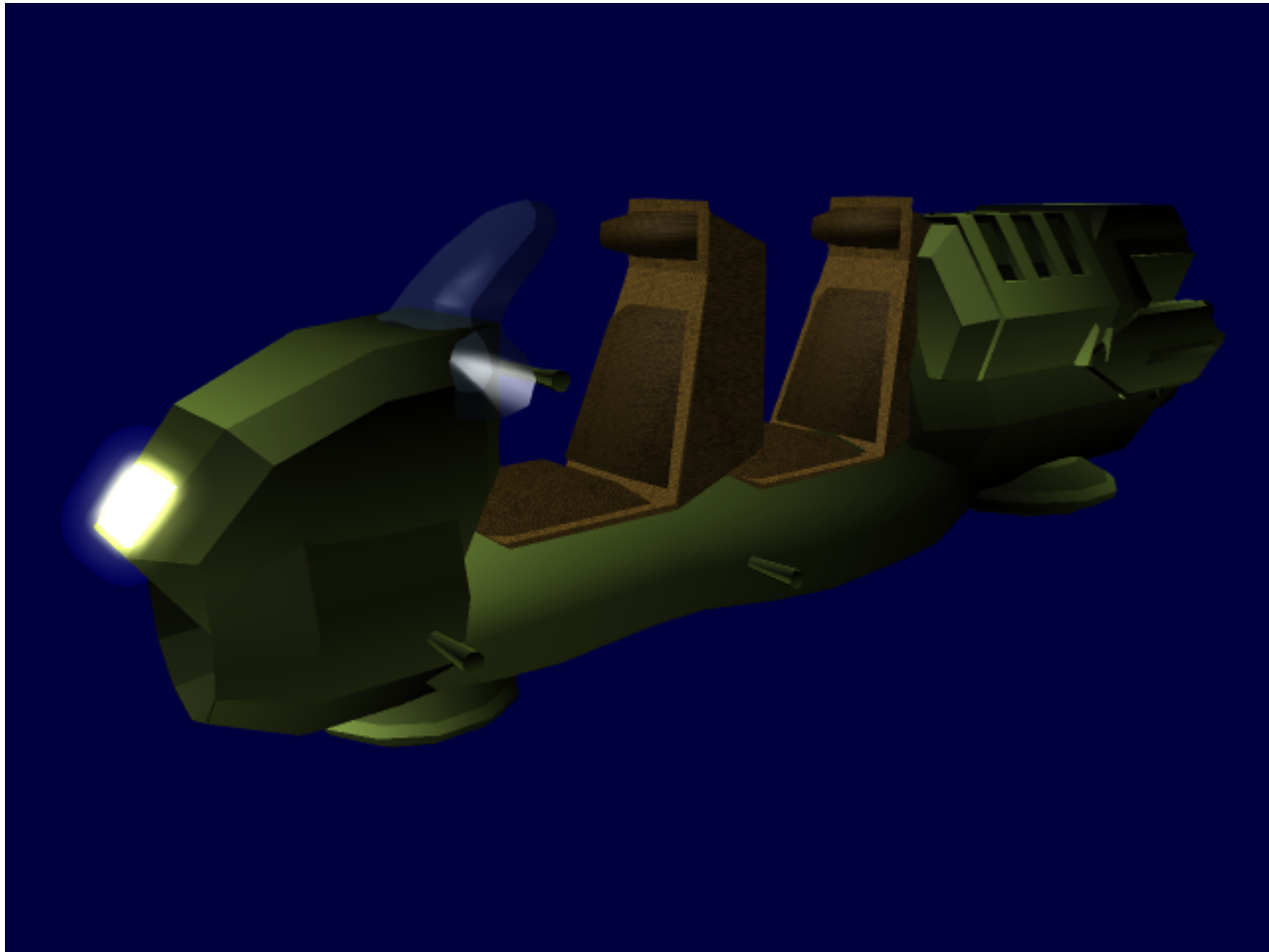




The following article is currently NOT APPROVED for in-character usage.

Ac-Y2-3a liri Liftcycle

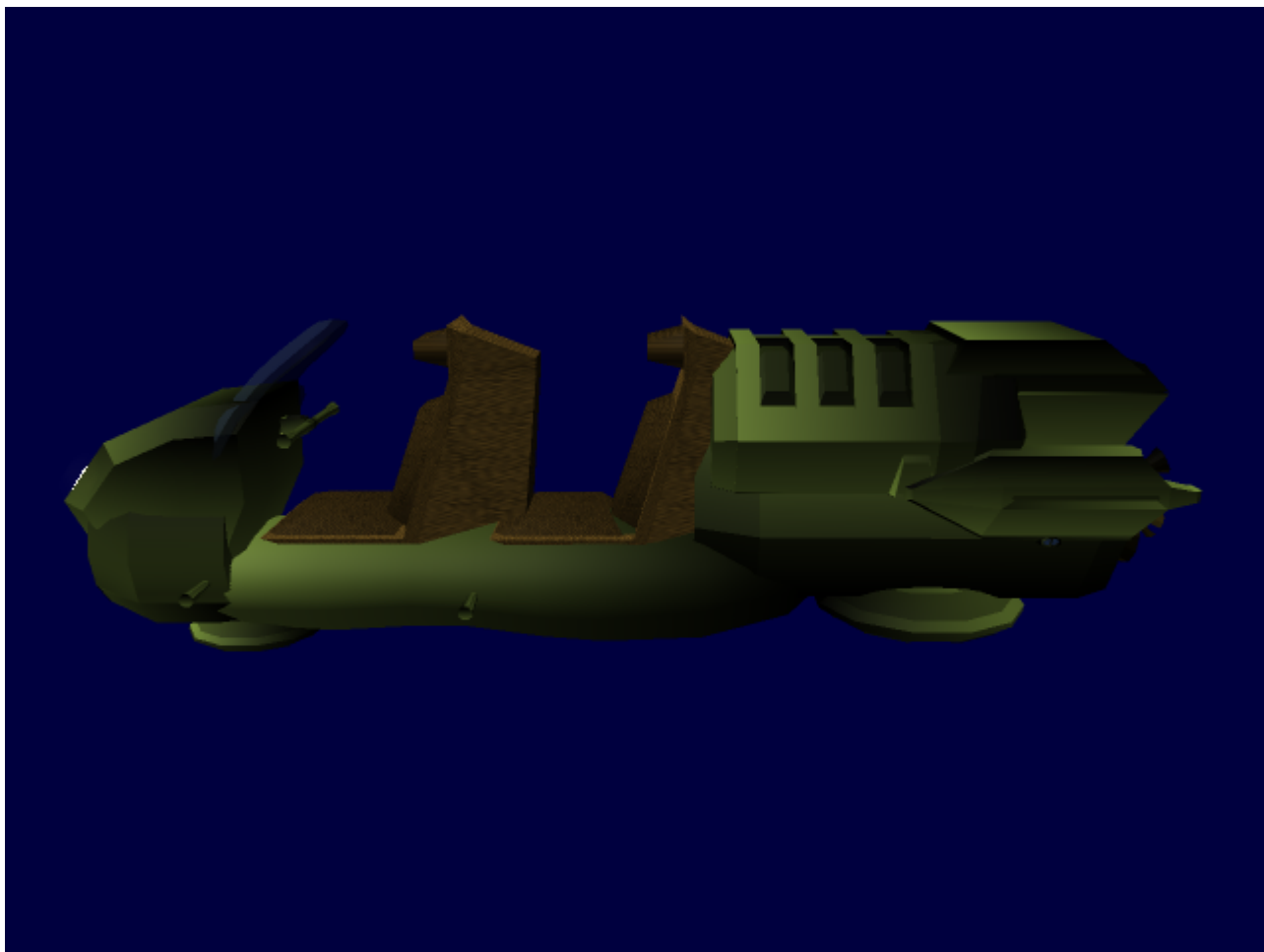


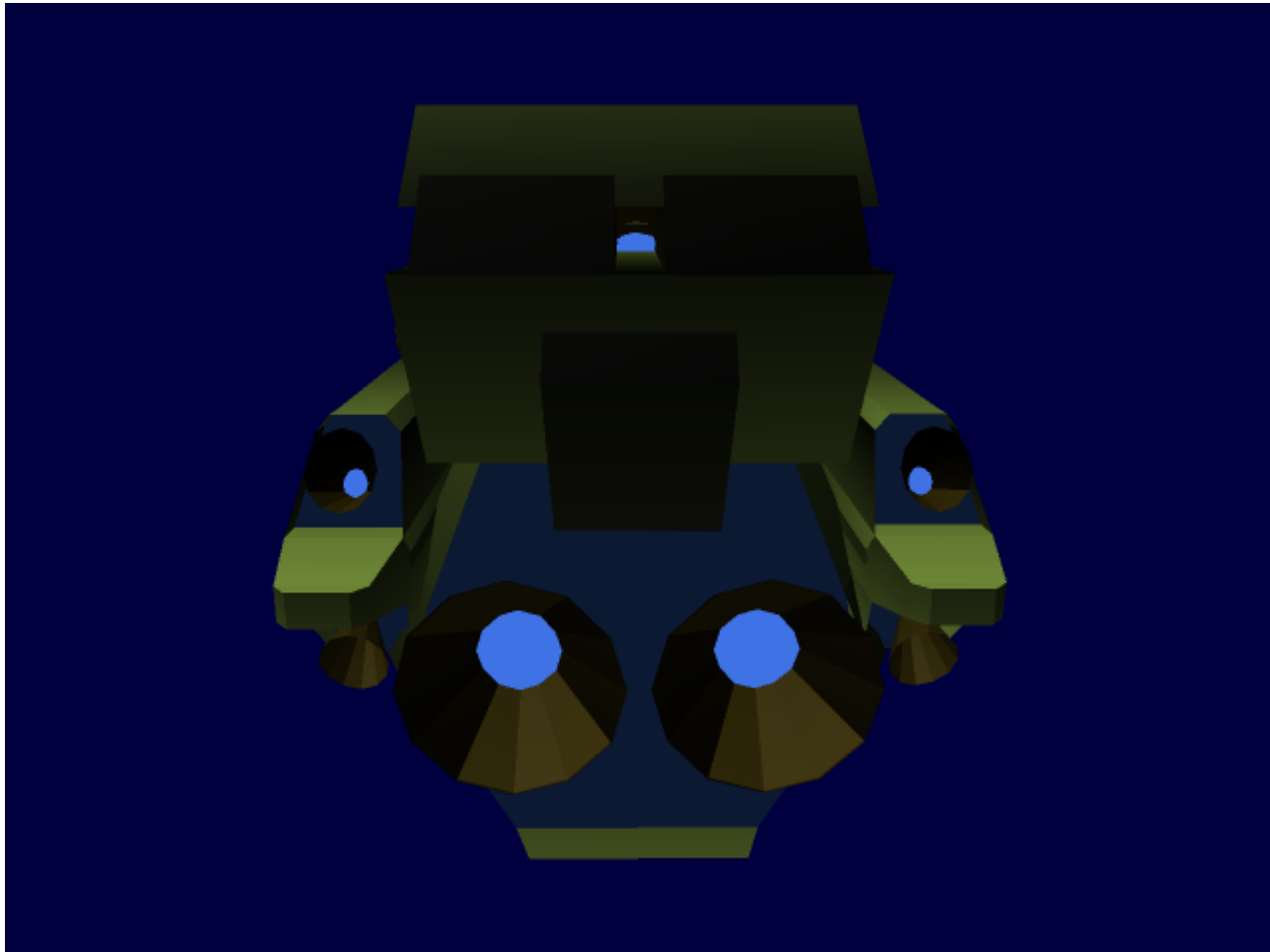
General Information

Organizations Using This Vessel: [Government of the Astral Commonwealth](#) Type: [GE](#) Liftcycle Class: Ac-Y2-3a liri Liftcycle Designer: Ushano Biran Manufacturer: [Ahmida Civiltech](#) Production: Full Mass Production Pilots: 1 Maximum Capacity: 2 Humanoids (Driver + Passenger) and 60 Kg of Cargo Cost: 8350 [KD](#) Appearance: The liri Liftcycle is a Touring-class (Meaning a liftcycle designed for comfort and passenger/load capacity, at the cost of high-end speed) vehicle that travels on a light gravity field generated by a pair of [GravElectric lifters](#) resting in a [lightweight frame](#) (one in the front and one in the back) with a pair of seats in the front one which is straddled by the operator along with touch sensitive pads on the handlebars for steering control. The combination of these help maintain structural integrity and chassis rigidity. An airflow system takes in particles from the air and ionizes them to provide thrust out of a rear jet, and steering is achieved with smaller jets on either side of the vehicle. Four small jets surrounding the rear jet provide thrust for vertical movement. The front fairings are shaped to reduce the

amount of dust and other particles from hitting the operator and passenger as much as possible and provide ample wind protection as well. The foot pegs are located in front of the riders, who sit in reclined positions and straddle the [supercapacitor](#).

These overall design traits mean that they are one of the more practical liftcycles for street use. Like other [lifter](#)-based vehicles it is capable of handling a wider variety of terrain than wheeled or tracked vehicles. Although it is street-legal vehicle in most planetary areas, there are some Metropolitan communities which prohibit the use of open-topped vehicles due to the increased danger of injury during a high-speed collision. While the stock liri is not the fastest liftcycle on the market, with a moderate amount of parts replacement and tuning, the liri is a viable machine for use in amateur racing. More often than not, the liri is utilized as a utility or travel vehicle in lieu of a larger, more expensive [lift-propelled](#) vehicle. Because of its easy handling and relative inexpensiveness, the liri is a popular target as a show vehicle, attracting buyers who end up modifying their liri with beauty mods that make their vehicle more aesthetically pleasing, or even just louder, brighter, and more noticeable.







Performance

Maximum Speed: 270 km/h (17.4s) Cruising Speed: 120 km/h (9.5s) Acceleration: 15 m/s² Maximum Altitude: 4 km Minimum Altitude: 27 cm

Key Features

- Helmet with integrated neuroband for communication between the rider and ANIOS
- [Strodirn Chassis and Plating](#)
- [GravElectric \(GE\) Lifter](#)
- [Civiltech ANIOS](#)
- Ion jets for thrust, lift and steering control.
- [Zaiflar Supercapacitor](#)
- Dual forward-facing headlamps (Low and High Beam).
- Locking system that cradles and cushions the arms, legs and lower back.
- Low-spec Multidirectional RADAR.
- Global Positioning System.
- Storage Compartment situated behind the back seat.

Popular Modifications

- Replacement ion jets for the back that swivel to give the vehicle a smaller turning radius (200 KD)
- Small propellant tanks that expel a gas that moves faster when ionized, giving the liftcycle a limited speed boost (80 KD for the mechanism, 50 KD for a pair of propellant tanks)
- Lifter tuning for more precise gravity control.
- Superconductor replacements in the Lifter unit to provide a stronger gravitational pulse. (1600 KD)
- Various flaring replacements that offer features like smaller windshields or a longer nosecone.
- A secondary supercapacitor that takes up half of the storage compartment for a longer operational time. (1450 KD, doubles effective range of the vehicle)
- Signal lights that project light out of the bottom of the vehicle to make the liftcycle more noticeable at night or when high off the ground. (135 KD)
- Running lights on the side of the chassis. (100 KD)
- “Noisemaker” units for the interior if the air intake passage. (80 KD)

From:

<https://wiki.starmy.com/> - **STAR ARMY**

Permanent link:

https://wiki.starmy.com/doku.php?id=faction:iromakuanhe:iiri_liftcycle

Last update: **2023/12/21 00:59**

