

Tini Poku (Clan Ships)



This [Clan Technology](#) page contains basic information on the types of ships used by the [Poku Saeruo Degonjo](#).

[Poku'vonai](#) ships are rarely all new construction; components of retired ships are reused to continue the legacy of that ship. This is also done to conserve factory resources. Typically components such as hulls, systems and crew spaces are constructed. Weapons and drive systems installed are reused, and or salvaged from other clan vessels.

Ships are also normally part of a [Family's](#) holdings, so keeping them in service is a matter of family honor. Vessels are sometimes built for a family by a [House](#) or [Sect](#), or the [Galysumanâ'ai \(Government\)](#) may assign ships to a Family.

Starships

These are the basic starship types of the [Poku'vonai](#).

Hatakur'a Gunship

The Hatakur'a (*Hunter*)-class are [gunships](#). Designed for minimum crew requirements, and feature normally 2 to 4 [Prowler Fighters](#), depending on actual size. Hunter-class ships are very utilitarian, to the point that they might be described as spartan, as they have no luxury features. Their STL engines are more powerful than their FTL engines. Hunter-class ships have the maximum amounts of armor and shields possible. Their weapons are powerful, but are designed for precise hits since they want their prey as intact as possible.

- View more details about the [HS-SG4-1a Yome Nuiqai \(Wings of Hawk\) Class Ship](#).



- Predecessor *Tyo'te Nuiqai (Wings of Fire)* - *HS-SG3-2a*

Yome Dahoka

The Yome Dahoka (*Battle Hawk*)-class ships are [cruisers](#).

- View more details about the [HS-SC2-1a Yome Daho'ka \(Battle Hawk\) Class Ship](#).



Ismâo'a

The Ismâo'a *searcher* are the scout ships for the Clan, and can be considered [escort ships](#). While they are armed, they are not intended for combat. Their mission is to survey a region of space, and gather information for the Clan. Identifying resources that can be gathered, and locating likely hunting grounds. These ships have a balance of STL and FTL engines. They incorporate the Clan's best stealth technology, as well as sensors and communications.



- View more details about the [HS-SE1-1A Ismâo'a \(Searcher\) - Class Ship](#).

Wadâmo'a

The Wadâmo'a *harvester* ships are basically mobile scrap yards. They have FTL drives and STL. They use heavy armor and shields for active defense, and electronic masking to hide while the hunters attack. The salvage equipment cutting torches and blades in an emergency can be used as close range weapons.



- View more details about the [HS-SS3-1a Wadâmo'a \(Harvester\)-Class Ship](#).

Ytaqo'a

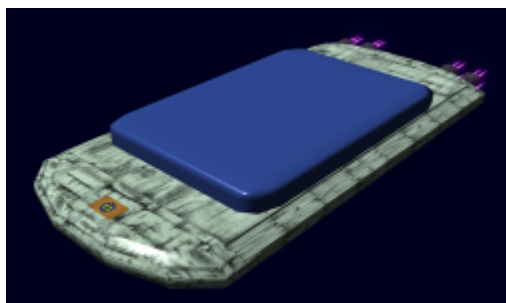
The Ytaqo'a *gatherer* ships are used by the clan to transport resources and [cargo](#). They are capable of landing on planets and docking with ships and space stations. This ship is associated with the [Gatherer](#) occupation.



- View more details about the [HS-SS2-1a Ytaqo'a \(Gatherer\) - Class Ship](#).

Âmuso Sae Ibâka

The Âmuso Sae Ibâka are diplomatic vessels developed to counter the limitations imposed by the [Tanoi \(Council\)](#) when the [Yamatai Star Empire](#) signed the [Defense Arrangement Treaty \(of the\) Alliance of Signatory States](#).¹⁾



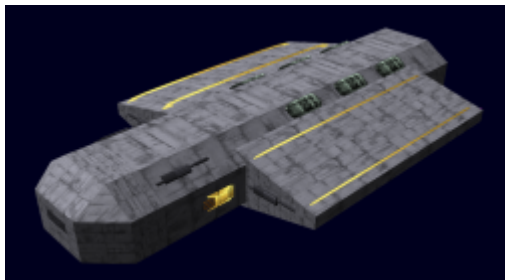
- View more details about the [HS-SD2-1a Âmuso Sae Ibâka \(Bright Star of Hope\) Diplomatic Ship](#).

Ta'aka

The Ta'aka (Messenger) ships, HS-E1 Messengers, are small, fast ships capable of carrying a modest amount of [cargo](#), and equipped with additional digital data storage. Their primary purpose is to relay important digital information. In many cases, these ships relay information to far-venturing hunting groups, and they also use their cargo storage to help resupply these hunters. Messengers normally travel to predetermined rendezvous points where the clan ships meet. In particularly critical situations, they will be sent to seek out a specific hunting group wherever they might be.

Vonai Wunyaka

This is the class of ship that carried the [Poku'vonai](#) from their original home to the Hidden Sun.



- View more details about the [Wunyaka Vonai \(Ark\)](#).

Gulvi-ka Mui

The Gulvi-ka Mui, or Sword of Mui, is the most unique class of ship that the [Poku'vonai](#) have constructed since the [Poku Movi Vamâqi \(Clan Void Berth\)](#) was completed. It was commissioned after they encountered the Defilers of the Dead. It is a warship built to carry emissaries to the Warrior Cat Women Clan. It is armed so that the Speaker can do so from a position of strength. There are only two of these built.



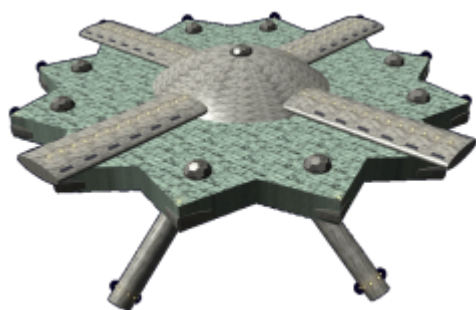
- View more details about the [HS-SD1-1a Gulvi-ka Mui-Class Ship](#).

Starbases

These are the types of large installations the [Poku'vonai](#) use.

Sotâka Ruomâqi

The Sotâka Ruomâqi *World Station* is the main habitat of the clan. At its heart are the twelve great arks that brought the clan to this region. Even though they are now surrounded by the shell of the World Station, the clan keeps the arks operational in case the need comes to move the clan again. Over the centuries the World Station has grown and expanded, it features large indoor parks and forests which supplement the station's life support system. There are 12 city states in the station, one for each Ark.



- View more details about the [Sotâka Ruomâqi \(World Station\)](#).

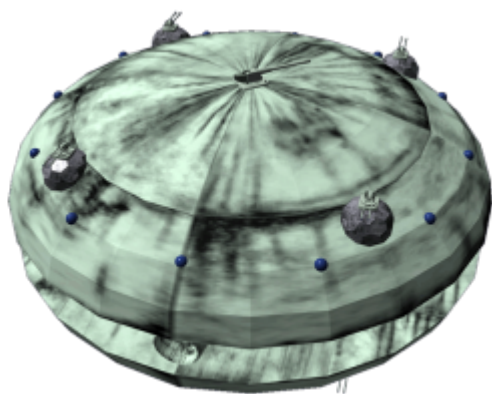
Poku Movi Vamâqi

The Poku Movi Vamâqi *Clan Void Berth* is a facility orbits [Sotâka Ruomâqi \(World Station\)](#) as a large moon. It is the Hidden Sun Clan's shipyard and research facility. The top sections are devoted to reverse engineering the stuff brought in by Harvesters. The next section of the Berth is the processing section, this is where gather materials are broken down and recycled. There are forges for melting the material and making metal sheets used for fabrication. The bottom half of Berth is the shipyard, one third of it is for construction, the rest is used for repair/refit of Clan vessels.

- View more details about the [Poku Movi Vamâqi \(Clan Void Berth\)](#).

Fuâmy'a Ruomâqi

The Fuâmy'a Ruomâqi *Watcher stations* are [Poku'vonai](#) defense outposts, where groups of [HS-AF1-1c Meqpâ'a Gulvisa \(Prowler Fighter\)](#) are kept to defend the home station.



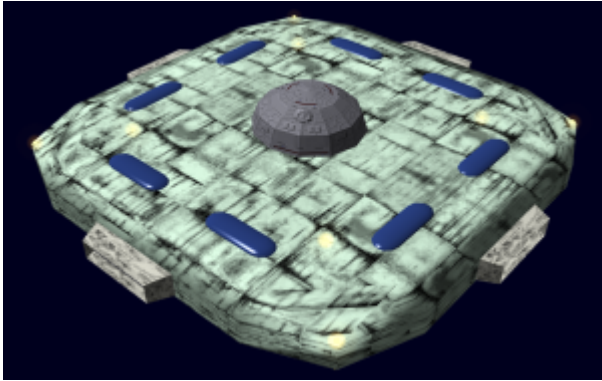
- View more details about the [HS-ST3-1a Fuâmy'a Ruomâqi \(Watcher Stations\)](#).

Way Stations

With the [YE 35 HSC - YSE Treaty](#), the [Poku'vonai](#) developed simple stations to handle customs and

inspections of ships entering Clan space.

- View more details about the [HS-ST4-1a Kâur Ruomâqi \(Way Station\)](#).



Small Craft

Prowler Fighter

These fast maneuverable fighters do not have FTL drives. They use lightweight armor and shields for defense. They are configured with most defenses towards the front. They feature the most powerful small weapons the Hidden Sun Clan can obtain.

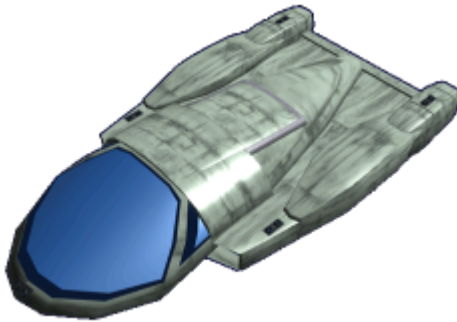


- View more details about the [HS-AF1-1c Meqpâ'a Gulvisa \(Prowler Fighter\)](#).
 - [HS-AF1-P756/00 Meqpâ'a Gulvisa Tinvyma Movidoanor Module](#)
 - [HS-AF1-P756/01 Meqpâ'a Gulvisa Tinvyma Piatypedá Module](#)



Flitter

This is the clan's equivalent of aerospace craft. Âdortin'sa means *small skyship or flitter* They come in two sizes; a two person model, and a six person model. Flitters are commonly stored in a [Rounor Âdortin'sa \(Shuttle Bay\)](#).



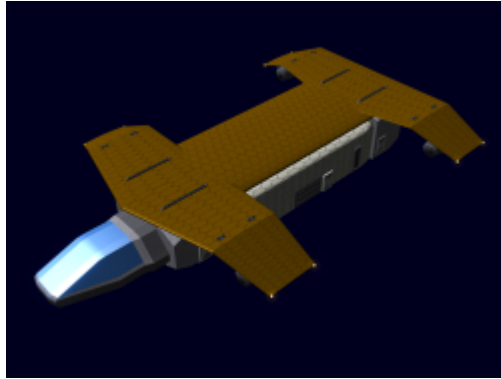
- View more details about the [HS-AS1-1a "Yome'iko" Âdortin'sa Vona'â \(Two-person Flitter\)](#).



- View more details about the [HS-AS2-1a "Dyet'una" Âdortin'sa Vona'oâ \(Six Person Flitter\)](#).

Âdortin's Beâgor'a (Hauler Shuttle)

A heavy load shuttle typically used for transferring cargo and passengers from a ship in orbit to the



surface of a planet.

- View more details about the [HS-AS3-7A Âdortin'sa Avuoten \(Thunder Shuttle\)](#).

Claw

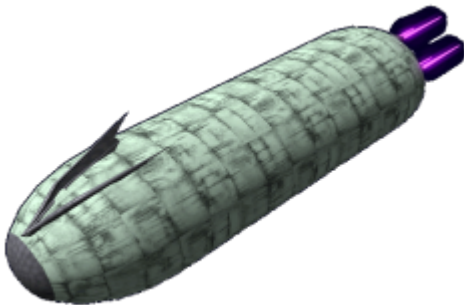
This is a unique craft carried by clan warships. Gita (Claw) is a unit used for boarding a captured ship.

- View more details about the [Gita \(Claw\) - Class Ship](#).

Torpedo

The HS-Z1 is the first torpedo to go into production since the the clan arrived here.

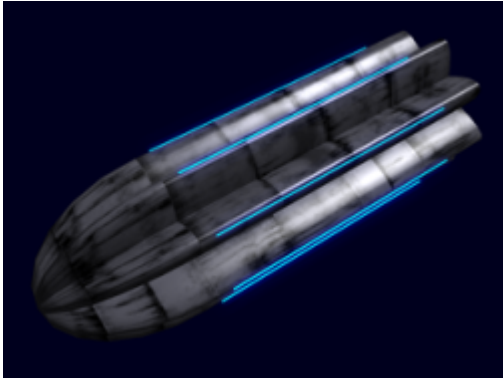
- View more details about the [HS-AZ1 Tâvygoavyma \(Torpedo\)](#).



Kyntago

This is a probe that the [Poku'vonai](#) deploy from an [HS-SE1-1A Ismâo'a \(Searcher\) - Class Ship](#).

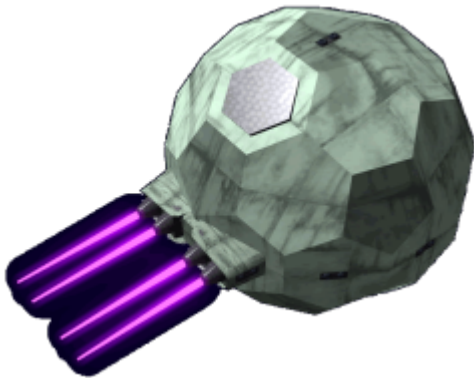
- View more details about the [HS-AD2-1a Kyntago \(Surveyor\)](#).



Border Monitor

This is a satellite drone that monitors the clans borders.

- View more details about the [HS-AD3-1c Fuâmy Anomovi \(Border Monitor\)](#).



Planned Future Ship Designs

These ship designs are in various stages of development by the [Silver Moon Sect](#).

Piaty Daho'ka

The *Battle Rider*-class ship, Hs-SC4-1a.

Ytaip Daho'ka

The *Battle Hauler*-class ship, Hs-SC3-1a.

Åbime Sou

The [HS-SC5-1a Åbime Sou \(Death Shadow\) Class Ship - In Design](#) is a ship design that remains in the concept stage; it is not currently in production.

Heavy Blade

This is a planned heavy-duty version of the [HS-AF1-1c Meqpâ'a Gulvisa \(Prowler Fighter\)](#) design. If developed, it will have the nomenclature of Hs-AF2-1a.

Ta'asa

This is basically a torpedo with no warhead. It is designed to be shot into a wormhole to deliver message packets to other ships. If developed, it will have the nomenclature of Hs-O1 Packet.

OOC

- Article and art by [Nashoba](#). Updated by [Hollander](#).
- DOGA Notes from Nashoba: Hull 82 94 85 with stain texture 100% emphasis 50% density. Turrets 82 94 85 with no texture.

¹⁾

Hollander Note: This line was written by Nashoba, and I'm not entirely sure what it means.

From:
<https://wiki.stararmy.com/> - **STAR ARMY**

Permanent link:
https://wiki.stararmy.com/doku.php?id=faction:hidden_sun_clan:starships

Last update: **2024/04/28 16:55**

