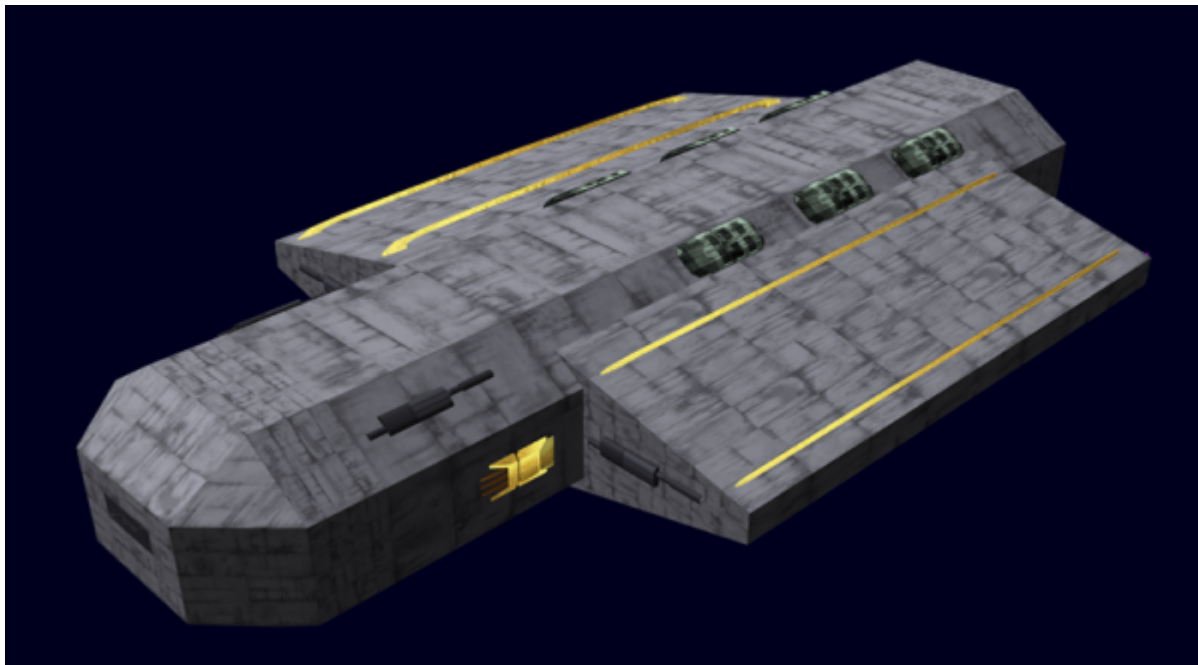


Wunyaka Vonai (Ark)

Wunyaka Vonai (pronounced wūnĭākă vō-năě, and which means *Great Container of People*), also called Arks, are the massive starships that the [Poku'vonai](#) used during the [Norka \(The Exodus\)](#) to transfer their culture and people to the Kikyo Sector where they became the [Poku Saeruo Degonjo](#).

About the Wunyaka Vonai

The Wunyaka Vonai is the oldest ship design in the clan. They are massive ships built for a single purpose; to carry as many people, and as much of their culture as possible. The ships are over 800 years old, but have been improved over the centuries and kept fully functional.



History

The clan had been drawn into a desperate battle for survival due to its alliances. The [Tanoi \(Council\)](#) was moved by the legendary leader, Kotoz Mui, when it became clear that their survival as a people was in jeopardy. At Kotoz Mui's direction, construction on the Arks began in [CY -49](#). Meanwhile their battle fleets valiantly fought against the enemy to buy time for what was to be called the [Norka \(The Exodus\)](#). All of the ship-building capacity at [Otâgolisoy \(Birth world\)](#) was put to the task. Originally there were to be eighteen arks constructed, but the number was lowered to fifteen. The ships took eighteen months to complete, and three months to load.

In [CY -50](#) the [Norka \(The Exodus\)](#) launched, and the Arks carrying the hopes of the [Poku'vonai](#) left for unknown space. Of the fifteen Arks constructed, only twelve made it the entire length of the [Norka \(The Exodus\)](#) and came to rest in the [Degonjo Saeruo \(Hidden Sun System\)](#). Three were deemed lost along the

journey, though [Âdor-Pedavuome \(Stormy sky\)](#) would later be rediscovered, rescued, and broken down and recycled in its entirety.

Once the Clan decided to settle in the [Degonjo Saeruo \(Hidden Sun System\)](#), the twelve surviving Arks were connected to each other, and made a part of what would become the [Sotâka Ruomâqi \(World Station\)](#).

In [YE 35](#), the [Mui \(Clan Leader\)](#) gave the order to prepare three of the arks for launch as part of the colonization effort that was part of the [Otâgo'iâmai \(New Worlds\)](#). The three Arks which left were Âmuar (Dream), Âtoma (Heart), and a third ark. ¹⁾

Appearance

The Ark is not typical of clan ships; it does not have the traditional coloring because it was built with stealth in mind. It has a boxy design, and has clusters of plasma drives on the aft. There are eight landing craft mounted on the top, and eight loading doors on the bottom levels.

Statistical Data

The following information is particular to the the Arks.

General

Class: *Wunyaka Vonai*-class Nomenclature: HS-X1-1a Type: Ark Designers: [Silver Clan](#) Manufacturer: [Silver Clan](#)

Crew and Accommodations

Crew: 3,000 Passengers: 130,000 Maximum Capacity: There are accommodations for 150,000 personnel Emergency Capacity: 200,000 people can fit aboard in an emergency, but the ship would be extremely cramped.

Dimensions

- Length: 9.92 kilometers (6.2 miles)
- Width: 5.76 kilometers (3.6 miles)
- Height: 3.2 kilometers (2 miles)

Propulsion and Range

Speeds

The *Wunyaka Vonai* is not an agile vessel.

- Atmospheric: 6 Mach (7,350 km/h) 4,566 mph
- Water: 100 kph (using [Heim Gravity Generators](#))
- [Tinvymai Tyokame \(Plasma Drives\)](#)
- Class 3C Maximum speed .05c (~14,989 kilometers per second) (~9,314 miles per second)
- [Tinvyma Movidoanor \(Tunnel Drive\)](#)
- Class F (Charge time: 60 min Mouth: 6,000 meters Distance: 30 LY)

Durability and Maintenance

Service Lifespan: Estimated 20 years of constant use, possibly longer with refits.

Refit Cycle: Routine updates are done when returned to [Degonjo Saeruo \(Hidden Sun System\)](#) by the [Otâmovi Wiy Jael \(Silver Moon Sect\)](#) at the [Poku Movi Vamâqi \(Clan Void Berth\)](#)

Damage Capacity

See [Damage Rating \(Version 3\)](#) for an explanation of the damage system.

- Hull: 100
- Shields: 80 (Threshold 5)

Inside the Ark

The Ark was built for a specific purpose. Given that they had no idea how long their journey was the ship was designed with function more than aesthetic. The ship is divided into three sections; Crew and Support, Storage, and Colonist.

Crew and Support

This section uses standard starship compartments that have been updated over the years.

Storage

The arks feature cavernous storage areas filled with the supplies needed to begin colonization. Each of

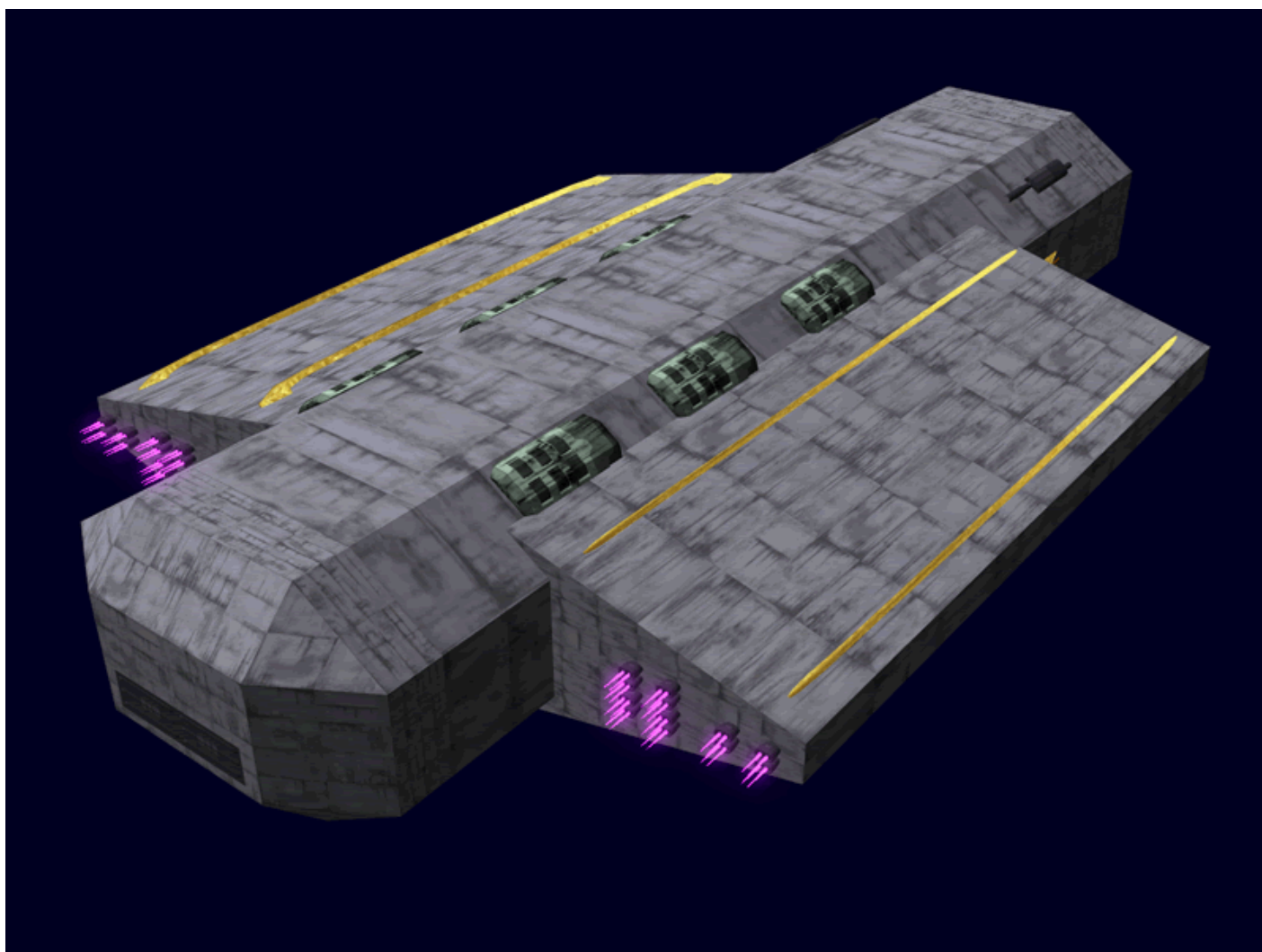
these areas was filled with hundreds of [HS-EC4-1a Wunyaka Tinsae \(Starship Container-Greater\)](#).

Colonist

This section is dedicated to the needs of the colonist. Since the clan had no idea how long personnel would be confined to this section, they have many amenities.

- Living quarters for 25,000 cabins rated capacity of 100,000

Systems



Armored Hull

The *Wunyaka Vonai* hull is constructed on a [Saemâqi \(Star Metal\)](#) frame, covered in [Saemâqi \(Star Metal\)](#) plating.

Computer

The *Wunyaka Vonai* uses a combination of a [Jodau Yoqajo \(Integrated Brain\)](#) and a [Jodau Sumanâjo \(Synthetic Brain\)](#) for its primary computer system. Many sub-systems and stations use [Jodau Fiqorka \(Module Brain\)](#) for additional computational power.

Life Support

The *Wunyaka Vonai* has all of the standard [Poku Saeruo Degonjo Damira Norjopa \(Environmental Systems\)](#). There are a total of ten complexes to supply the needs of the ship.

Power

Primary Power

The *Wunyaka Vonai* uses ten separate [Movi Geanme Tyokanorjopa \(Quantum Foam Reactor\)](#) to power primary system. Each is tied to a [Gean Norjopa \(Generator\)](#).

Secondary Power

The *Wunyaka Vonai* uses eight [Sumanâ-a Tyokanorjopa \(Fusion Reactors\)](#) to provide backup power, each has its own [Gean Norjopa \(Generator\)](#)

Tactical Power

The *Wunyaka Vonai* has a number of [Âmanus Tyokanorjopa \(Anti-Hydrogen Reactor\)](#) to provide power to tactical systems, each has its own [Gean Norjopa \(Generator\)](#)

Propulsion

Atmospheric

The *Wunyaka Vonai* uses [Heim Gravity Generators](#) for propulsion in atmosphere for landing and take-off.

Thrusters

The *Wunyaka Vonai* hull is dotted with hundreds of [Gean Vymasa \(Ion Thruster\)](#)s for minor attitude

corrections.

STL Drive

The *Wunyaka Vonai* is equipped with twenty-four Class 3C *Tinvymai Tyokame (Plasma Drives)*.

FTL Drive

The *Wunyaka Vonai* is equipped with a Class F *Tinvyma Movidoanor (Tunnel Drive)*.

Sensors

The *Wunyaka Vonai*-class ship has a complete dual set of *Tinsae Mâbor'a (Starship Sensors)*.

- [HS-SS1-E1100 - Quantum Flux Detector](#)
- [HS-SS1-E1101 - Subspace Sensors](#)
- [HS-SS1-E1102 - Gravimetric Scanner](#)
- [HS-SS1-E1103 - Imaging Cluster](#)
- [HS-SS1-E1104 - Ranging](#)
- [HS-SS1-E1105 - Targeting RADAR](#)

Shields

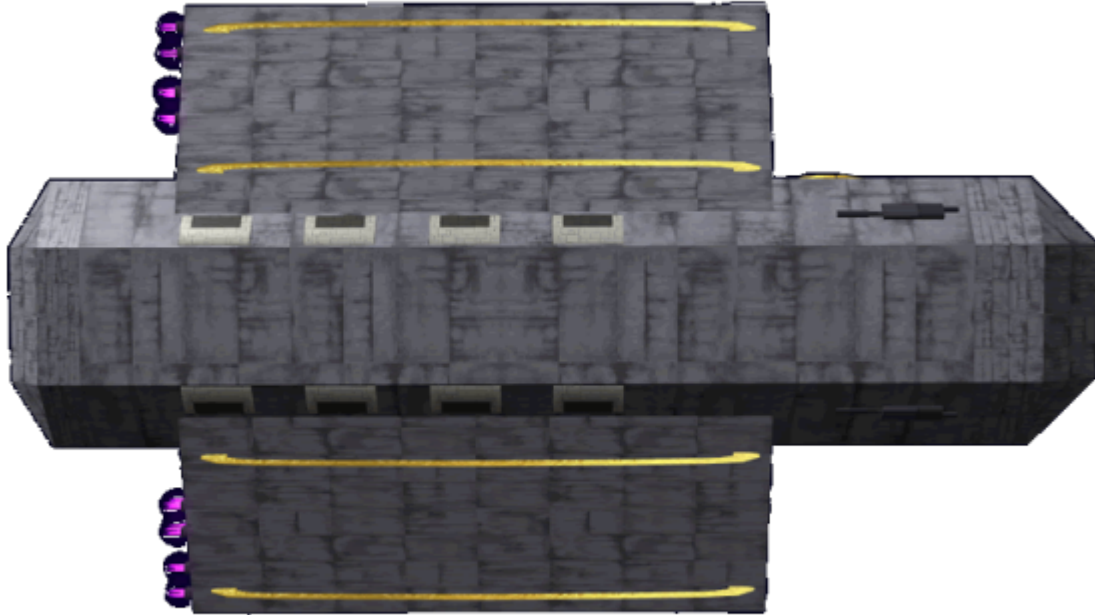
The *Wunyaka Vonai* has the following shield systems.

- [HS-SS1-E739/00 Anoka Udano \(Gravity Shield\)](#) for FTL use
- [HS-SS2-S720/00 Anoka Wotanu'pa \(Defense Shield\)](#) for tactical situations
- [HS-SS1-E739/03 Anoka Degon'te \(Stealth Shield\)](#) for stealth purposes

Support Craft

- 24 [HS-AS3-7A Âdortin'sa Avuoten \(Thunder Shuttle\)](#)

Additional Information



Names

#	Name	Status
1	Âmuar (Dream)	Deployed to a Colony on Âmuar (Dream) in YE 35
2	Kyanorgo (River)	Operational
3	Âtoma (Heart)	Deployed to a Colony on Âtoma (Heart) in YE 36
4	Âmuso (Hope)	Operational
5	Meqpâ'a (Prowler)	Operational
6	Vithui (Forest)	Operational
7	Yekloka (Crystal)	Operational
8	Yomesou (Death Hawk)	Operational
9	Vithuika (Jungle)	Operational
10	Yleg'ka (Avenger)	Operational
11	Ismâo'ka (Quest)	Operational
12	Matu'ka (Great Bear)	Operational
13	Âdor-Pedavuome (Stormy sky)	Salvaged 631 CY
14	Tyo'te-Pedavuo (Fire Storm)	Lost
15	Kamâjosawy (Great Treasure)	Lost

OOC Notes

- Article and art by [Nashoba](#).

¹⁾

[Hollander](#) writing. [Nashoba](#) may not have ever clarified the identity of the third ark to colonize the Twins system. I'm still looking into this.

From:

<https://wiki.stararmy.com/> - **STAR ARMY**

Permanent link:

https://wiki.stararmy.com/doku.php?id=faction:hidden_sun_clan:ships:hs_x1_ark

Last update: **2024/03/17 18:40**

