

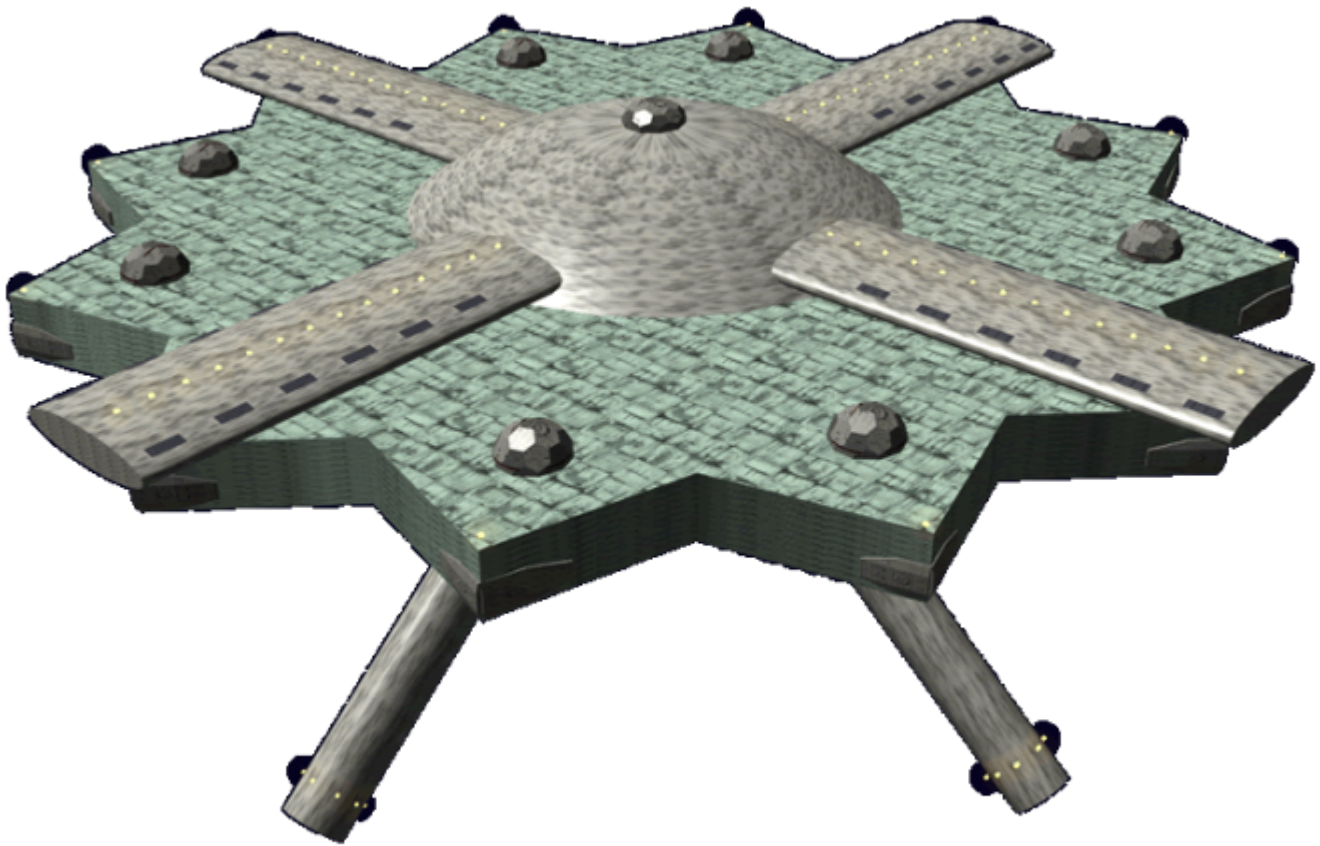
# Sotâka Ruomâqi (World Station)

Sotâka Ruomâqi (World Station) is the base of operations for the [Poku Saeruo Degonjo](#). It floats near the star [Ida Siamaka](#) in the [Degonjo Saeruo \(Hidden Sun System\)](#), and is joined by the [Poku Movi Vamâqi \(Clan Void Berth\)](#) nearby. Construction of the World Station was completed in 126 CY (YE -593).

## About the Sotâka Ruomâqi

The World Station is the main habitat of the [Poku Saeruo Degonjo](#). It is capable of supporting up to a billion members of the clan. At its heart are the twelve great [Wunyaka Vonai \(Ark\)](#)s that brought the clan to this region. Even though they are now surrounded by the shell of the World Station, the clan keeps the arks operational in case the need comes to move the clan again.

Over the centuries the World Station has grown and expanded, it features large indoor parks and forests which supplement the station's life support system. There are 12 [Vonaieano'ka \(City State\)](#) in the station, one for each Ark.



## History

Initial construction started 0 CY (YE -719) with the securing of the Arks; and continued until 1 CY (YE -718). It consisted of a lattice of structural support and passageways interconnecting the great vessels. Construction resumed in earnest 26 CY (YE -693) after the [Poku Movi Vamâqi \(Clan Void Berth\)](#) had been completed. Construction continued non-stop until 126 CY (YE -593). Of the centuries the station has seen a number of upgrades to its infrastructure, but it has not grown externally.

## Appearance

The World Station's core is twenty-four sided with a pair of large hexagonal doors on the lower half of each point which leads to the berth of the docked [Wunyaka Vonai \(Ark\)](#). within. Above the dock and support section area houses the twelve city states. The exterior is angular and designed for maximum internal space.

Above the core is a large domed structure. This houses the residential and governmental structures of the Capital. This is the seat of power for the clan it is sixteen miles wide and three miles high. Protruding from the Capital are four arms, which serve as the World Station space port. Huge mile wide doors line either side of the arms to allow traffic to come an go.

The station has nine two mile across domes which are position on the top of the capital and on the top and bottom of eight of the points. These are the defense domes which house weapons and craft to defend the World Station.

The lower section of the World Station is a large half sphere eight miles wide. From it four cylindrical sections protrude at a 45 degree and are at right angles to each. Each of these is two miles wide and twenty-one miles long. These cylindrical sections house the vast farms that supply the primary food items and supplement the station's life support. In each of the tubes down its center is a column that provides support equipment and housing for the farm workers.

## Specifications

### Dimensions

- Length: 67.2 kilometers (42 miles)
- Width: 67.2 kilometers (42 miles)
- Height: 30.4 kilometers (19 miles)

## City States

The following are the names of the twelve [Vonaieano'kai \(City States\)](#). The city states are named for the [Wunyaka Vonai \(Ark\)](#) that are berthed beneath them. Because there are two levels to each, they share the same name but have a suffix to delineate.

Âmuar-mu (Dream-Over) Âmuar-se (Dream-Under)

#	Name
1	Âmuar (Dream)
2	Kyanorgo (River)
3	Âtoma (Heart)
4	Âmuso (Hope)
5	Persevere
6	Vithui (Forest)
7	Yekloka (Crystal)
8	Yomesou (Death Hawk)
9	Vithuika (Jungle)
10	Yleg'ka (Avenger)
11	Ismâo'ka (Quest)
12	Matu'ka (Great Bear)

## Capital

The [Galysumanâ'ai Buvoli \(Capital\)](#) is where the government of the [Poku Saeruo Degonjo](#), the [Tanoi \(Council\)](#) is located.

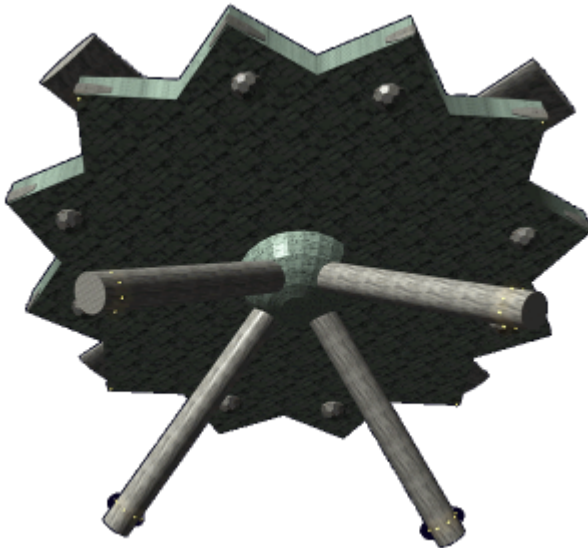
## Farm

The bottom of the World station is dedicated to the production of food stuff. See details of the [Weâm Vana Movi \(Farm\)](#)

## Defenses



## Systems



## Armored Hull

The *Sotâka Ruomâqi* hull is constructed on a double hull made with a [Mâqirây \(Bound Metal\)](#) frame, covered in [Saemâqi \(Star Metal\)](#) plating.

## Computers

The *Sotâka Ruomâqi* uses a collective of *Yoqajo Jodau* (*Integrated Brains*) to keep the myriad systems on the station operating smoothly. There is one *Jodau Yoqajo* (*Integrated Brain*) per city state.

From:

<https://wiki.stararmy.com/> - **STAR ARMY**

Permanent link:

[https://wiki.stararmy.com/doku.php?id=faction:hidden\\_sun\\_clan:ships:hs\\_h1\\_world\\_station](https://wiki.stararmy.com/doku.php?id=faction:hidden_sun_clan:ships:hs_h1_world_station)

Last update: **2024/03/10 16:09**

