

# HS-AF1-1c Meqpâ'a Gulvisa (Prowler Fighter)

The *Meqpâ'a Gulvisa* class is the basic attack craft of the [Poku Saeruo Degonjo](#), this design has been in use since 720CY ([YE 11](#)).

## About the Meqpâ'a

The *Meqpâ'a* is the Clan's latest fighter design. It uses proven [clan](#) designs and systems. Within a year of its release, it replaced all older fighter designs.

The *Meqpâ'a* is primarily designed to operate in space, but it is capable of operating in atmosphere. While it is capable of high speed in the atmosphere. Its flight performance is best at considerably slower speeds.

## History

The *Meqpâ'a* design started in 719 CY ([YE 10](#)). At that time the clan was using a design that had served for fifty years, and was based on stealth more than speed. With *Gulvisa* moving into a wider role the clan needed a new design.

The *Meqpâ'a* balances speed and firepower. This was achieved by the addition of the [Tavigo'nor Âdornor'te \(Missile Launcher\)](#) to the arsenal. The *Meqpâ'a* also returned to a traditional cockpit arrangement, which is more comfortable for pilots on extended patrols.

The *Meqpâ'a* completed trials in early 720CY ([YE 11](#)), and went into mass production.

729 CY ([YE 20](#)) the design was updated to the 1b which added the [Ida Malvuka'a \(Eye Gouger\)](#), improved pilot comfort with memory foam padding.

731 CY ([YE 22](#)) the design was upgraded to the 1c which added an underbelly mount which allows the attachment of a single [HS-AF1-W731/00 Tin Pasou'a \(Ship Killer\)](#) missile. The 1c is the current version of the *Meqpâ'a*.

## Appearance

The *Meqpâ'a* is the traditional green/gray color. The fighter is a dart configuration, with four plasma engines in the rear, the cockpit clearly visible in the front and thruster modules visible at key points.



## Statistical Data

### General

Class: Meqpâ'a (Prowler) Nomenclature: HS-AF1-1c Type: Fighter Designers: [Otâmovi Wiy Jael \(Silver Moon Sect\)](#) Manufacturer: [Otâmovi Wiy Jael \(Silver Moon Sect\)](#) on [Poku Movi Vamâqi \(Clan Void Berth\)](#)

### Crew and Accommodations

Crew: 1

### Dimensions

Length: 11.5 meters ( 37.72 feet) Width: 7 meters ( 22.96 feet) Height: 2 meters ( 6.56 feet)

### Propulsion and Range

### Speeds

The Meqpâ'a is a very nimble vessel.

- Atmospheric:
  - Combat: Mach 2 - 2,450.088 KMPH (1,522.414 MPH)
  - Max: Mach 7 - 8,575.308 KMPH (5,328.449 MPH)
- [Plasma Thrusters](#)
- Class 3A Maximum speed .3c (~89,937 kilometers per second) (~55,884 miles per second)

## Durability and Maintenance

Service Lifespan: Estimated 20 years of constant use, possibly longer with refits.

Refit Cycle: Routine updates are done when returned to [Degonjo Saeruo \(Hidden Sun System\)](#) by the [Silver Moon Sect](#) at the [Poku Movi Vamâqi \(Clan Void Berth\)](#)

## Damage Capacity

See [Damage Rating \(Version 3\)](#) for an explanation of the damage system.

- Hull: 16 (Armor)
- Ablative Armor: 12 (Threshold 3) (Armor)

## Inside the Gulvisa

### Pilot Pod

The *Meqpâ'a* uses a traditional [Poku Saeruo Degonjo](#) cockpit design. The pilot lays on a narrow couch on their stomach facing forward. Their arms and legs are hang naturally. The couch is padded with foam for the pilots comfort. The pilot is held secure by a fabric web that they pull over their torso and secure it. There are pedals in the back of the pod, that the pilot works to control engine power for each set of engines. The front of the cockpit has a wrap around control panel which contains sensors, communications, directional and weapon controls.

There is an [Iginâ Yoqa \(Neural Link\)](#) to allow the pilot to interface directly to the fighter systems. While operating the craft the pilot attaches the space suit to the fighter systems. The upper half of the pod is covered in [Mâqitua'tomin \(Transparent Light Metal\)](#), which the pilot can make transparent for visual flight.

## Ship Systems

### HS-AF1-A720/00 Armor (Defense)

The *Meqpâ'a* uses a layer of [Qotim Anoka'ano Anomu'te \(Ablative Armor Plating\)](#) to provide extra

protection. Reduced speed from .35c to .3c

## HS-AF1-A720/01 Armor Construction

The *Meqpâ'a* uses a frame constructed of *Mâqitua (Light Metal)*, and is plated with *Mâqirây (Bound Metal)* plating. The pilot pod canopy is *Mâqitua'tomin (Transparent Light Metal)* which allows the pilot to use visual if necessary.

## HS-AF1-C720/00 Computer

The *Meqpâ'a* uses a cluster of three *Iginâ Jodau'ta Fiqorka (Neuron Processor Module)* for its computer/control system. A *Iginâ Yoqa (Neural Link)* is provided along with physical controls for the pilot.

## HS-AF1-R720/00 Communications

The *Meqpâ'a* uses standard *Ta'te Goly Norjopa (Far Talking Systems)*

## Power

### HS-AF1-G720/00 Primary Power

The *Meqpâ'a* uses a *Otâmovi Wiy Jael (Silver Moon Sect) Âmanus Tyokanorjopa (Anti-Hydrogen Reactor)* to power primary system. It is tied to a *Gean Norjopa (Generator)*

### HS-AF1-G720/01 Secondary Power

The *Meqpâ'a* uses a pair of *Otâmovi Wiy Jael (Silver Moon Sect) Sumanâ-a Tyokanorjopa (Fusion Reactors)* to provide backup power, each has its own *Gean Norjopa (Generator)*.

## HS-AF1-M720/00 Landing Gear

The *Meqpâ'a* uses three retracting landing gears to support the craft when its on the ground. The *Meqpâ'a* primarily uses VTOL to lift off the skids and then retract them. Although it could use them as skids provided the surface was appropriate.

## HS-AF1-V720/00 Life Support

The *Meqpâ'a* has a compact [Niufofi'a Norjopa \(Atmosphere Systems\)](#) and an emergency reserve good for twenty-four hours. It also has a compact [Kyafofi'a Norjopa \(Water Purification\)](#) for recycling water on long patrols

## Propulsion

### HS-AF1-P720/00 Atmospheric

The *Meqpâ'a* uses [Heim Force Generator](#) for propulsion in atmosphere and for landing and take-off.

### HS-AF1-P720/01 STL Drive

The *Meqpâ'a* is equipped with two Class 3A [Otâmovi Wiy Jael \(Silver Moon Sect\) Tinvymai Tyokame \(Plasma Drives\)](#) for Sublight propulsion.

### HS-AF1-P720/02 Maneuvering

The *Meqpâ'a* is equipped with eight pairs of [Otâmovi Wiy Jael \(Silver Moon Sect\) Gean Vymasa \(Ion Thruster\)](#) for attitude control in space.

### HS-AF1-P756/0x FTL Module

The *Meqpâ'a* can be equipped with either of the following modules to provide faster-than-light capabilities:

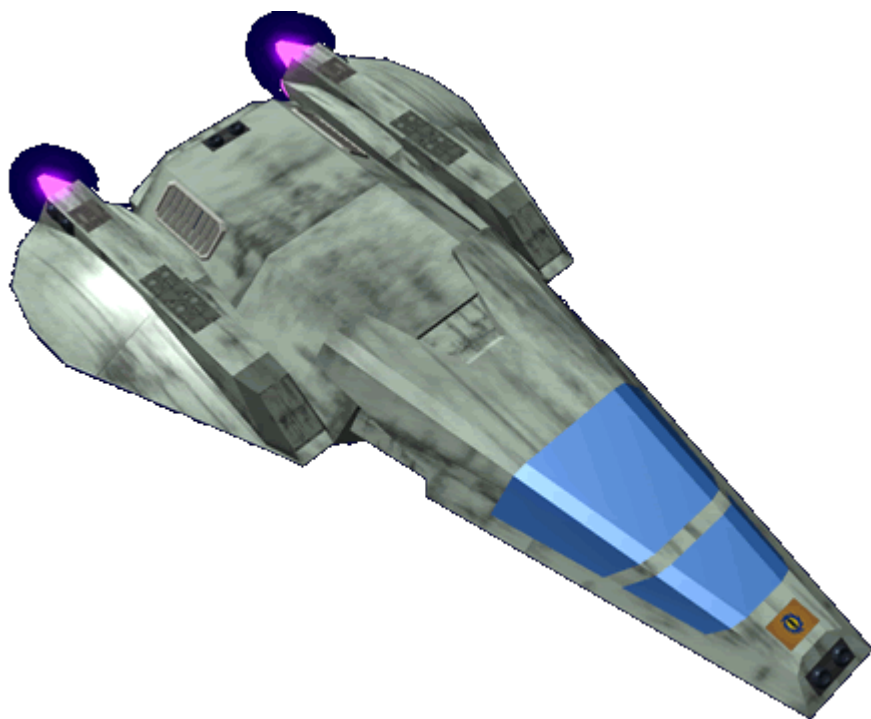
- [HS-AF1-P756/00 Meqpâ'a Gulvisa Tinvyma Movidoanor Module](#)
- [HS-AF1-P756/01 Meqpâ'a Gulvisa Tinvyma Piatypeda Module](#)

### HS-AF1-E720/xx Sensors

The *Meqpâ'a* is equipped with the following sensors from the [HS-AF1-E720xx Tin'sa Mâbor'a \(Small craft Sensors\)](#)

- [HS-AF1-E720/00 Gravimetric Scanner](#)
- [HS-AF1-E720/01 Imaging Cluster](#)
- [HS-AF1-E720/02 Ranging](#)
- [HS-AF1-E720/03 Targeting RADAR](#)

## Weapon Systems



### HS-AF1-W720/00

The *Meqpâ'a* is equipped with a pair of [Akko Rotysa \(Coil Gun\)](#). They are mounted on the upper side of the stabilizers in a retractable housing. Ammunition for the weapons is stored in the fuselage. Damage: 5 (ADR) 300 round each

### HS-AF1-W720/01

The *Meqpâ'a* is equipped with a pair of [Tavigo'nor Âdornor'te \(Missile Launcher\)](#). They are mounted under the stabilizers in a retractable housing. Missiles are stored inside the fuselage. Damage: 2 (ADR) per missile

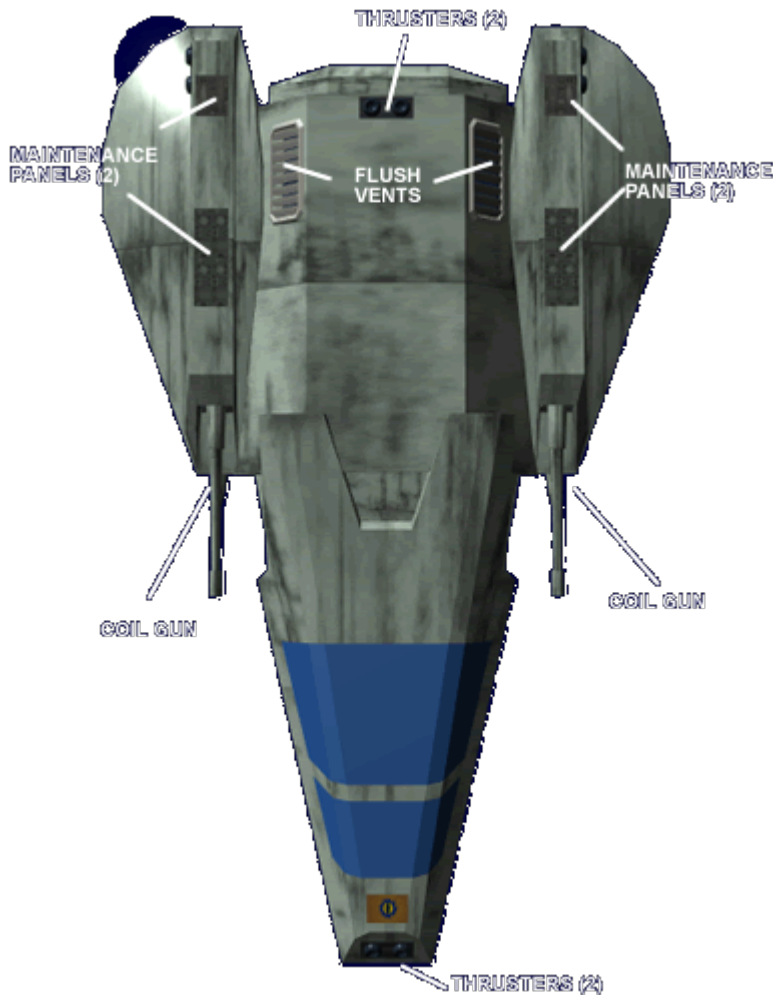
### HS-AF1-W720/02

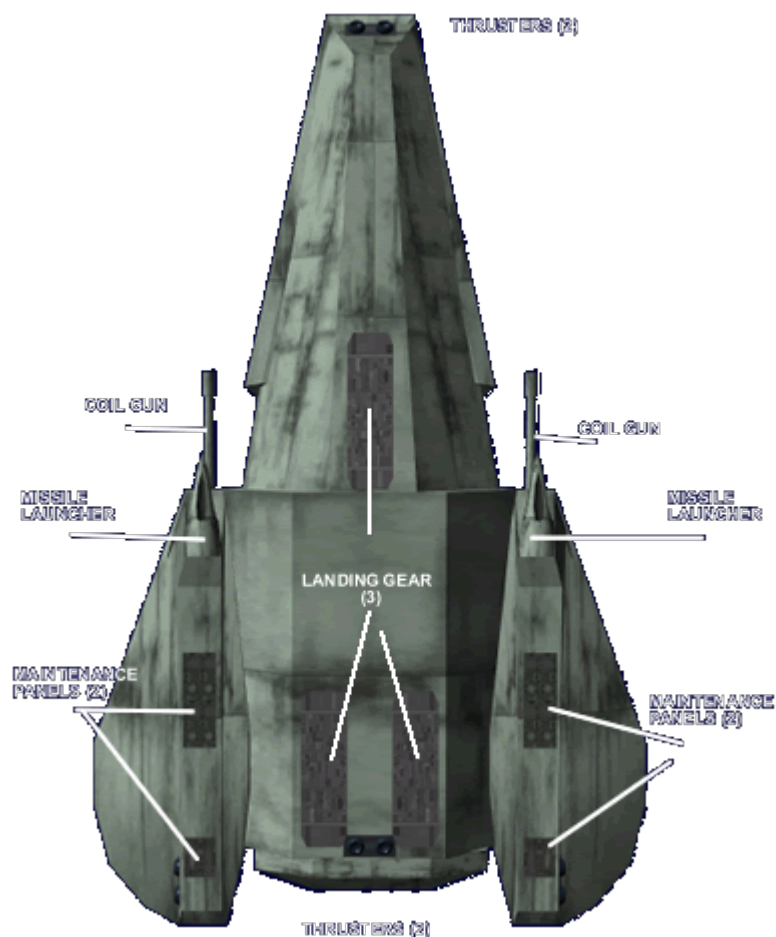
The *Meqpâ'a* is equipped with a [Ida Malvuka'a \(Eye Gouger\)](#) which is mounted on the rear and detaches when activated.

## HS-AF1-W731/00

The *Meqpâ'a* can be equipped with a [HS-AF1-W731/00 Tin Pasou'a \(Ship Killer\)](#) missile, this is an uncommon piece of ordinance that is mounted on the underside of the craft. Due to the size and mass of the missile and how it adversely affects the fighter's performance. The Tin Pasou'a is only mounted when a specific has been chosen for the attack. Damage: 4 ([SDR](#)), reduces the ship speed by 50%.

## Images





From:  
<https://wiki.stararmy.com/> - **STAR ARMY**

Permanent link:  
[https://wiki.stararmy.com/doku.php?id=faction:hidden\\_sun\\_clan:ships:hs\\_af1\\_1c](https://wiki.stararmy.com/doku.php?id=faction:hidden_sun_clan:ships:hs_af1_1c)

Last update: **2023/12/21 04:22**

