

Ruohu-jyaoni (Architecture)

Ruohu-jyaoni or *building laws* list the various aspects and styles of construction used by the [Poku Saeruo Dagonjo](#) for their structures. Their design aesthetic is traditional and has remained largely unchanged for many centuries, though new materials and techniques of construction have been adopted and advanced. The [Poku'vonai](#) of the [Otâgolisoy \(Birth world\)](#) lived in warm climes, so their structures were made to accommodate that.

Room Design

The structures tend to have high vaulted ceilings. Rooms are generally spacious and open floor plans are common. Structures tend to be octagonal and most residences are single level. Sometimes, in larger residences, a second level can be found. In other cases, multiple structures can be attached either physically or by a covered walkway.

Windows and Doors

Windows are large, circular, and screened. Windows are made of material that can be polarized to become translucent for privacy.

Exterior doors are usually round, hinged on both sides, and split down the center, opening inward or outward from the middle. Traditionally, they are made of wood and decorated with the [Punla \(Family\)](#) [Afirmugaly \(Heraldry\)](#). Some families have adopted hexagonal split doors.

Roofs

Roofs are sloped, and typically are made of slate tiles or simulated slate. Some are extended to create a wrap around porch and are supported by poles or columns. Some structures will have skylights to help with interior lighting.

Walls

The interior walls can be paneled or covered in wall coverings such as fabric or wallpaper, depending on taste.

Exterior walls are sometimes paneled in wood, brick or stone. Most Poku'vonai prefer to have a natural looking surface.

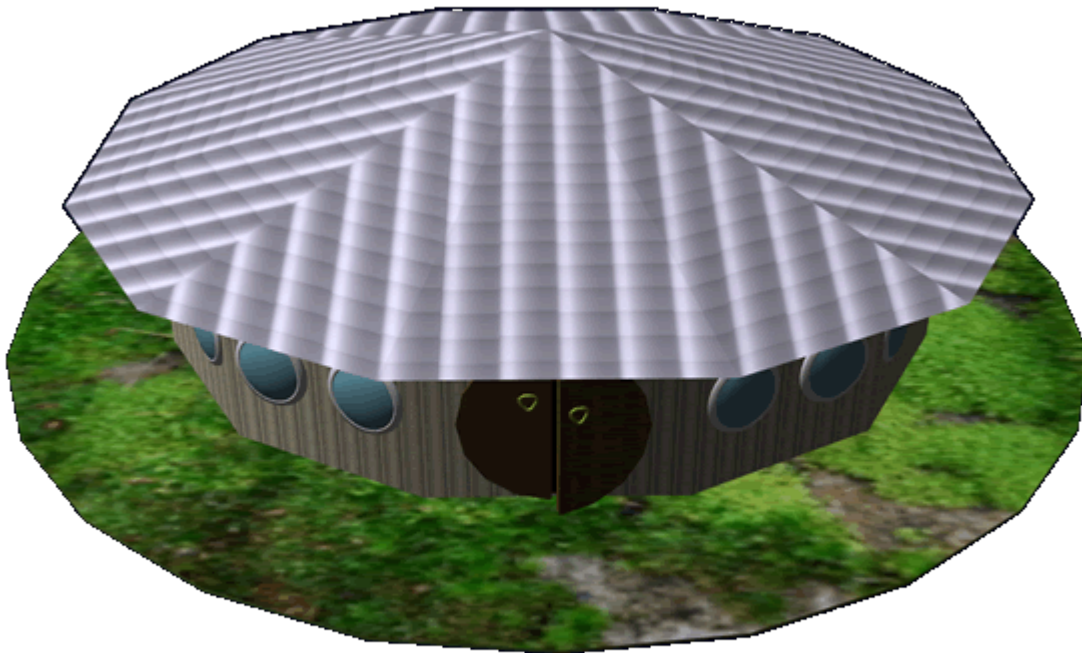
Lighting

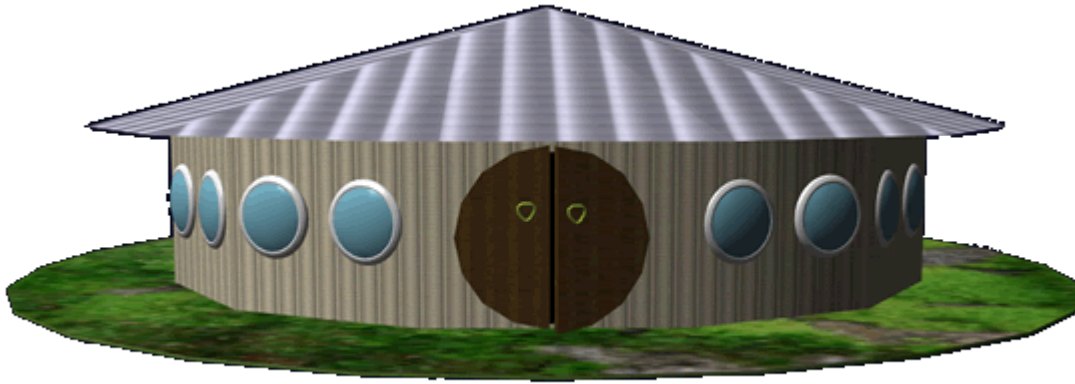
Natural lighting is the preferred means of lighting a living space. Most exterior rooms have one or more windows, and skylights are common for all rooms. Lighting sources are sometimes recessed in the ceiling. Standing lamps are common for nighttime light.

Ceilings

Vaulted ceilings are often painted to depict the sky. Fans are often mounted on ceilings to keep air circulating.

Images





OOO Information

- Artwork by [Nashoba](#).

From:

<https://wiki.stararmy.com/> - **STAR ARMY**

Permanent link:

https://wiki.stararmy.com/doku.php?id=faction:hidden_sun_clan:architecture

Last update: **2024/03/07 20:41**

