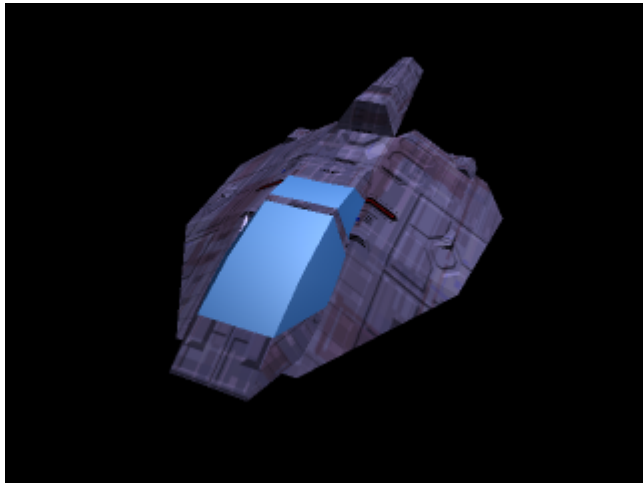


# Journey-Class Shuttle



## About the Ship

The Journey was designed to fill a niche' within the [United Outer Colonies](#), and the need for something. A personal, civilian shuttle. The Journey is the answer to that, and they do it in style, and in comfort with a reasonable price tag.

## History and Background

The Journey was designed by conceptual designers at [Kakutama Heavy Industries](#) and lead by Shichou Tai to help fill the lack of dedicated personal civilian transport. The Journey is aptly named for its intended purpose, to commence a Journey across the stars, and contains all the necessities to do so for a single person, or a group.

## Statistics and Performance

### General

Class: Kh-T1-1a Type: Personal Civilian Shuttle Designers: [Kakutama Heavy Industries](#) Manufacturer: [Kakutama Heavy Industries](#), [United Manufacturing Cooperative](#) Production: Mass Production

### Passengers

Crew: 1 Maximum Capacity: There are accommodations for 6 people. About 14 people can fit aboard in

an emergency, but the ship would be extremely cramped.

## Dimensions

Length: 16m Width: 14m Height: 3.5m Decks: 1.5

## Propulsion and Range

2	Personal Shuttle	.425c	10,000c (1.14 ly/h)
---	------------------	-------	---------------------

## Damage Capacity

See [Damage Rating \(Version 3\)](#) for an explanation of the damage system.

- Hull: 20 ADR
- Shields: 20 ADR (Threshold 3/5)

(Keep in mind, I am working on this, so give me sometime to hammer out this new system into this thing)

## Inside the Ship

### Deck Layout

- Deck One: Main Deck
- Deck One Point Five: Cargo space, engineering panel access.

## Inside the Journey

### Bridge

The Bridge of the Journey is a simple one, or two seater depending on how many people are on board. Directly head, facing the window is the pilot's controls, off to the side on the same panel is sensors, communications and so on. If a second crew member is present, the other control panel can be used to split the work load. The seats are comfortable, made of memory foam set to a adjustable seat frame. This also includes adjustable arm rests. The memory foam is covered in a soft, beige leather.

### Kitchenette

Directly aft of the bridge is the rest of the shuttle. In the Journey, a kitchenette was added late into the

design to enhance comfort, and decrease reliance on simple rations.

Included within the kitchenette is a "[Zapper](#)" [Emfratec Cooker](#) allowing one to prepare their own food. Food stores are kept within the kitchenette, and within a built into the wall refrigeration and freezer unit. Dry goods are kept in over head cupboards with safety latches in case the artificial gravity unit fails.

To further suppliment the food stores, a small scale [Organic Tissue Culture Unit](#) has been installed upon a small counter top.

### **Living Area**

A small living area bedroom combination was added into the design as well. While not in use it may appear as empty space for further use, or as a living room, or bedroom depending. It contains two futon 'couches' that raise up from slots within the floor, and can shift from the couch position, to bed with a simple command. Each couch is set against an adjoining wall on either side of the Journey's living area. A table is within the center of the room, and includes a built in volumetric projection system along with many interactive features. Be it from simple television, to table top games, or video games. The table appears in the same fashion as the futons when not in use.

### **Bathroom**

The Journey contains its own bathroom with a sink, and toilet. Due to space issues it only has a shower.

### **Engineering Access**

Further in the back of the Journey behind protective panels is access to some of the shuttle's critical systems. These are only to be opened in the event of field repair. Otherwise they must remain close lest over exposure to outside elements affect their performance.

### **First Aid Station**

The First Aid Station is a small, enclosed room with an [Emergency Response Kit](#) as well as a fold out bed from the wall.

## **Ship Systems**

### **Hull and Space Frame**

## Frame

The frame of the Journey is primarily constructed of [Durandium Alloy](#) rods and struts. They've been interlinked, and arranged to reinforce the frame, as well as hull to allow for protection, from possible attack as well as re-entry to a planet.

## Hull

The Hull of the Journey is also constructed of [Durandium Alloy](#) plate. [Durandium Alloy](#) was chosen as it is cheap, and easy to produce, is lightweight, and still allows for great overall protection.

Damage Rating:6

## Computers and Electronics

### Computer System

The Journey utilizes a pair of [Neural Processor Packs](#) to serve its computational needs.

### Sensors

A [Common Sensors Package](#) comes included with the factory made Journey. However, there is room for upgrades to this system for a nominal fee for the parts and installation.

### Communications

The Journey's communications package includes and up to, [Radio, Laser, and Subspace](#).

## Emergency Systems

The Journey has a number of useful built in Emergency Features. In case of a fire, overhead fixtures will deploy and disperse a fire retardant foam. Hull breeches, or should life support failure be eminent, the Journey contains a number of eva suits just in case.

Should the shuttle's power or communication's systems be inoperable it comes with a built in subspace distress beacon with its own power source, good for 120 hours of continuous operation.

## Propulsion

The Journey really shines when it comes to its propulsion systems. The Journey has its own high powered Sublight-Drive, and Faster-Than-Light Drive systems. These systems were taken from existing concepts and designs, and altered to suit the needs of the Journey.

A High Performance [Plasma Drive](#) was used within the Journey, and acts as its sublight propulsion system.

With recent advancements in the [Subspace Wave Drive](#) technology, it was chosen as the FTL system for the Journey.

## Shield Systems

The Journey uses a [Standard Shield Package](#)

## Power Systems

Due to the high power of the Journey's propulsion systems, a high grade power source was required.

### Anti-Matter Generator

The Journey required a high powered energy source, and anti-matter supplies this with gusto. A small scale anti-matter generator system acts as the main source of power for the Journey.

### Emergency Power

In case of main power failure, the Journey has a backup emergency power source. This power source is a civilian entry level performance [QNC](#).

## Free Addition

With the purchase of a Journey, a repair kit has been added in. This kit is rated to repair any cracks in the hull from various spaceborn objects, or minor scuffles. However, large breaches require either evacuation of the shuttle and the immediate activation of the subspace distress beacon. The repair kit comes with a 1 gallon container of [Metal & Plastic Pico-Jelly and Control Device](#) as well as stonethread patches.

## OOO Notes

This page was originally made by [Soresu](#) It was approved by [Wes](#) on 6/28/2008 in this [thread](#).

From:

<https://wiki.stararmy.com/> - **STAR ARMY**

Permanent link:

[https://wiki.stararmy.com/doku.php?id=corp:yugumo\\_corporation:khi:shuttles:journey-class\\_shuttle](https://wiki.stararmy.com/doku.php?id=corp:yugumo_corporation:khi:shuttles:journey-class_shuttle)

Last update: **2023/12/21 05:24**

