

# Yugumo Standard Cargo Bay

The Yugumo Standard Cargo Bay is a starship interior developed by the [Yugumo Corporation](#) in [YE 45](#).

## History and Background

In [YE 45](#), the [Yugumo Corporation](#)'s [Yugumo Fleetworks](#) division sought to continue the standardization of its interior modules for the ships it produced. When they designed the Standard Cargo Bay they drew inspiration from the company's very successful [Shuryoku-Class Super Freighter](#) to ensure that cargo storage standards could be kept unified across [Yugumo Fleetworks](#) designs.

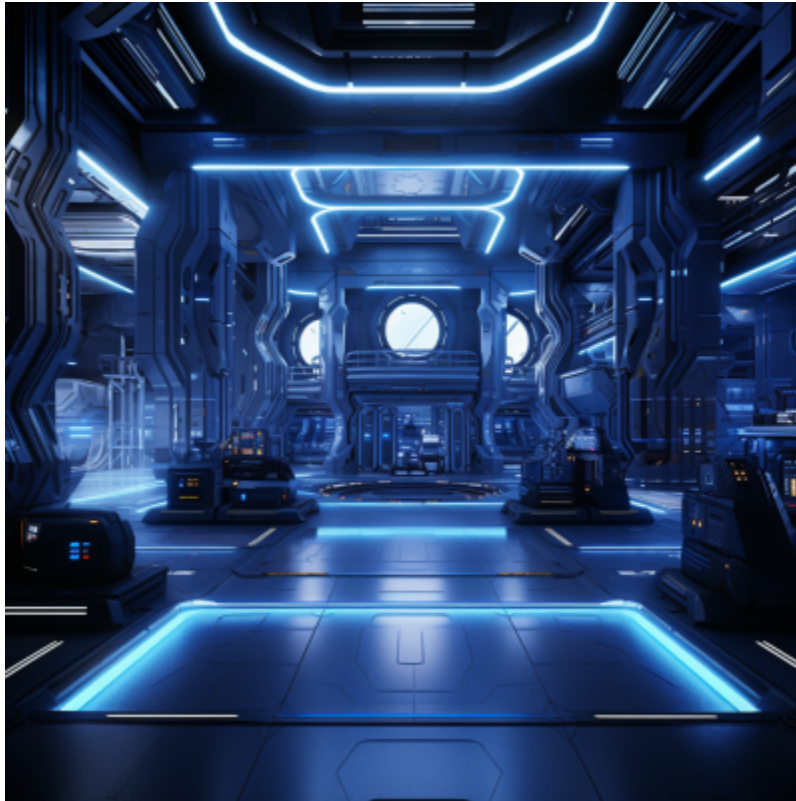
## Product Information

The product information for the Yugumo Standard Cargo Bay.

Yugumo Standard Cargo Bay	
Year of Creation	<a href="#">YE 45</a>
Designer	<a href="#">Yugumo Fleetworks</a>
Nomenclature	Type 45
Manufacturer	<a href="#">Yugumo Fleetworks</a>
Fielded by	<a href="#">Yugumo Corporation</a> , <a href="#">Yugumo Merchant Spacy</a>
Availability	Mass Production

## Cargo Bay

The Yugumo Standard Cargo Bay is a crucial and versatile space designed to store and transport various goods, equipment, and supplies across the vast expanse of the [Kagami Galaxy](#). It serves as the logistical heart of the starship or space station, ensuring that essential materials and resources are readily available for missions, trade, exploration, and survival in the depths of space. The cargo bay is typically located in the central or lower section of the starship, often near the ship's center of mass for stability.



The size of the cargo bay varies widely depending on the type and purpose of the starship. Larger vessels have more expansive cargo holds. The cargo bay provides storage for [Standard Starship Cargo Containers](#). It has tracks, cranes, and robotic arms all designed to move, load, unload, and stack [Standard Starship Cargo Containers](#).


## Access

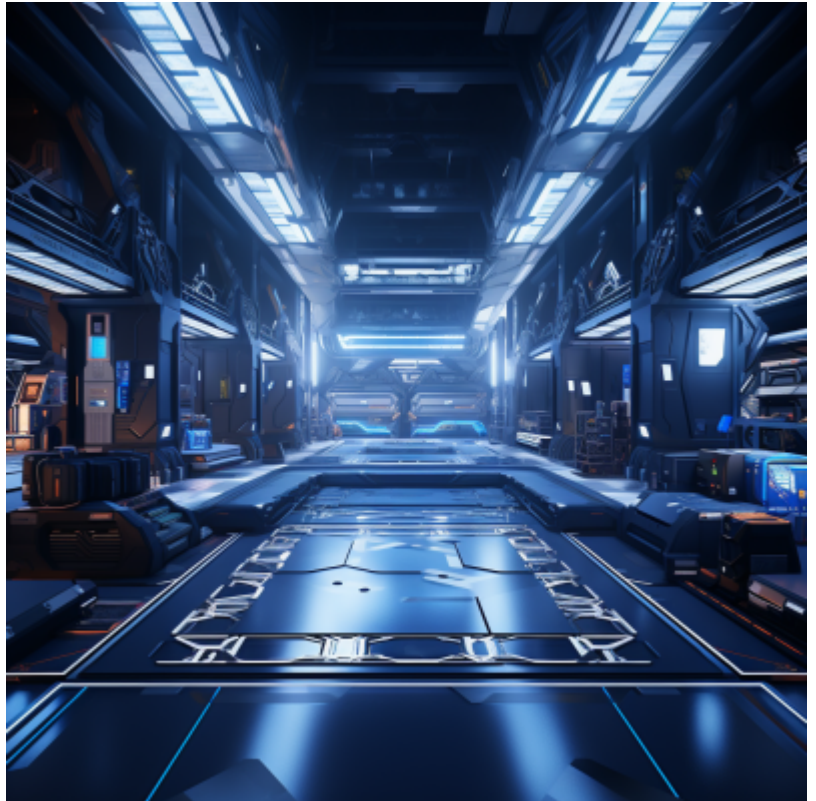
Entry to the cargo bay is usually gained through large, [Forcefield-Nested Isolation Doors](#) that are sealed to maintain the ship's integrity in case of emergencies. For smaller starships, a single access point may suffice, while larger vessels, like the [Tanya-Class Expeditionary Heavy Cruiser](#), have multiple entryways to accommodate simultaneous loading and unloading.

## Structural Features

The cargo bay is constructed with [Durandium Alloy](#) reinforced walls and floors designed to withstand the rigors of space travel and protect the contents from external hazards. Modular anchoring points and securing mechanisms are integrated into the cargo bay's structure to hold cargo in place during acceleration and deceleration. Forcefields (Graviton Generated) allow for the maintenance of the various atmospheric and environmental conditions inside the container holds.

## Lighting and Environmental Controls

Adequate lighting is essential for efficient cargo handling and organization. Adjustable  [laser diode](#) lighting sources illuminate the bay.



[Environmental controls](#), including temperature, humidity, and atmosphere, are maintained to suit the specific needs of the cargo. Some items may require controlled environments, while others can tolerate standard ship conditions.

## Cargo Handling Equipment

A variety of cargo-handling equipment is available, including [KAIMON/Ascendant Carrier](#), anti-gravity lifters, cargo cranes, and transport sleds. These tools assist crew members in moving, loading, and unloading cargo efficiently and safely. Forcefields, magnetic clamps, and other measures to secure cargo can also be swapped in and out in different configurations

## Cargo Manifest and Inventory

[KAIMON](#) manages cargo manifests, ensuring that all items are accounted for and stored in their designated locations. Inventory management software allows [Support Crew](#) to easily locate and retrieve specific items within the cargo bay.

## OOO Notes

Originally written by [Yuuki](#), updated by [Andrew](#) on 2023/09/22 09:22.

This article was approved by [Wes](#) on 2023/10/01.<sup>1)</sup>

Written with the assistance of ChatGPT. Art is done in Midjourney by [Andrew](#).

Products & Items Database	
Product Categories	interiors
Product Name	Yugumo Standard Cargo Bay
Nomenclature	Type 45
Manufacturer	<a href="#">Yugumo Fleetworks</a> , <a href="#">Yugumo Corporation</a>
Year Released	<a href="#">YE 45</a>

<sup>1)</sup>  
<https://stararmy.com/roleplay-forum/threads/tengumo-class-space-station.70964/#post-440922>

From:  
<https://wiki.stararmy.com/> - **STAR ARMY**

Permanent link:  
[https://wiki.stararmy.com/doku.php?id=corp:yugumo\\_corporation:interiors:yugumo\\_standard\\_cargo\\_bay](https://wiki.stararmy.com/doku.php?id=corp:yugumo_corporation:interiors:yugumo_standard_cargo_bay)

Last update: **2023/12/21 04:21**

