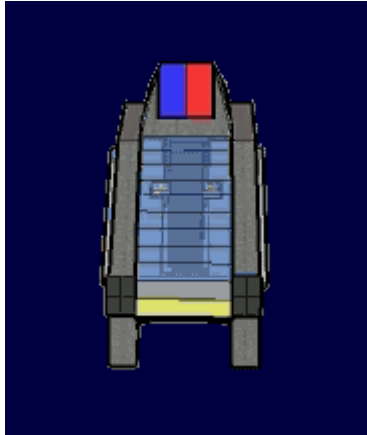


Finch-Class Patrol Craft

The 'Finch' Class patrol craft is a light weight pilot pod which has been designed to be utilized as a patrol craft for both police and military applications.



About the Ship

The Finch-Class patrol craft was designed as a means of providing effective and consistent patrol capabilities for planetary settlements and stationary or slow moving space installations or starships. The primary buyers the Finch is aimed at are the LSDF, Lorath Matriarchy, [United Outer Colonies Peacekeeping Forces](#), and third-party security forces.

Key Features

The Finch offers a solid flight platform which is capable of extended operations in various conditions with little or no problem. Additionally, the Finch can be armed with various lethal and less than lethal weapon systems to allow for the craft to oppose threats which would exceed the capabilities of a patrolman or unarmored soldier.

Mission Specialization

The primary uses of the Finch include planetary patrol, in-system patrol, station patrol, anti-PA operations, and personnel suppression.

History and Background

The Finch-Class was designed in part by the Lorath Matriarchy with the assistance of the [United](#)

[Manufacturing Cooperative](#) to be utilized as a means of patrolling planetary assets and stationary space assets. The UMC saw the opportunity to market the Finch to the Peacekeeper forces as well.

The Finch can also be outfitted to be utilized as a military police vehicle as well.

Statistical Data

General

Class: UMC-PP-M-001¹⁾ and UMC-PP-P-001²⁾ Type: Pilot Pod Designers: Lorath Matriarchy, [United Manufacturing Cooperative](#) Manufacturer: [United Manufacturing Cooperative](#) Production: Mass Production Fielded by: LSDF, Lorath Matriarchy, UMC, and [United Outer Colonies Peacekeeping Forces](#)

Passengers

Crew: 1. Maximum Capacity: 2.

Dimensions

Length: 5 Meters Width: 1.5 Meters Height: 1.25 Meters Decks: 1 (cockpit)

Propulsion and Range

Low-Power Magneto-plasmic Drive .1c (Space) / Mach 3 (Atmospheric) **Low-Power Gravitic Drive:** .1c (Space) / 605 Kph (Atmospheric) **Skid Rollers (Must be landed):** 195 Kph Range: 1 AU (Air and Space) Lifespan: 5 Years Refit Cycle: When new technology is available.

Inside the Ship

Cockpit

The cockpit of the Finch-Class has been designed to provide comfortable accommodation for one operator. The cockpit consists of a user-adjustable synthetic material seat (With easy-release harness), flat panel instrument panel and interface with volumetric capabilities, neural interface system, transparent dome hatch with optional opaque shutters, retractable interface pedals, left and right side storage compartments, and an OLED display system.

Internal Storage Compartments

Located to the left and right of the operator seat, these compartments allow for the storage of equipment to be utilized by the operator. These storage compartments have also been designed to include a storage area which allows for the easy storage of one rifle-sized weapon and ammunition.

Ship Systems

Armored Hull and Hull Integrated Systems

Durandium Hull and Frame

The hull and frame of the Finch patrol craft is composed of [Durandium Alloy](#). A sliding shutter system has also been included which can cover the transparent cockpit dome. The shutter is also Durandium alloy.

Military model Finch units are constructed of [Duremium Alloy](#)

Structural Points

Armor Structural Points 15

Transparent Carbon Ring Canopy

The cockpit canopy of the Finch is made of transparent Carbon Ring with a thin transparent mesh of Durandium woven in. The dome has been treated with OLED material which allows for the dome to be utilized as a display device.

In military models, transparent Duremium is used for the cockpit canopy.

Computers and Electronics

The Finch's sensor and computing needs are tended to through the use of the [MIKO Electronics Suite](#) with Patrol module. Alternatively, Finch units can be outfitted with a Non-SI [ARIA Ship Control System](#) and [Lorath Sensor Packages](#) of the common variety along with the empathic sensor system.

A software system has been added which allows for operators of the Finch to rapidly identify registered vehicles and individuals which are scanned by the Finch.

Emergency Systems

The Finch has been outfitted with the following emergency systems.

First Aid Kit

The Finch can be outfitted with an emergency response [Lorath First Aid Kit](#), or a [Peacekeeper Field First Aid Kit](#)

Ejection System

In the event of a catastrophic system failure, the Finch can eject it's operator safely if the pilot is strapped properly into the Finch's seat. When the ejection system is activated, the cockpit canopy is ejected, and the operator seat is propelled away from the Finch utilizing a focused magnetic pulse. Prior to canopy ejection, a rapid release pre-programmed amount of [Pico-Jelly](#) is released onto the operator, which forms a skin-tight pressure suit. Along with the pico-jelly suit, a pressurized mask is deployed from the headrest of the operator seat which the operator is to pull over their head prior to canopy ejection.

The ejection system is capable of sustaining an individual in vacuum for one day.

Medical Drone

The Finch has been equipped with a [12-inch medical drone](#). The option is also available of Finch units having a launcher system installed which allows for the launching of Mi-Sized Medical Drone units.

Subspace Beacon

Each Finch is equipped with an emergency subspace beacon which is attached to the back of the operator seat. The subspace beacon allows for ejected pilots or lost Finch units to be found. Additionally, the beacon allows for the tracking of Finch units.

Impact Reduction System and Scalar Damage Prevention

A gravity projection system has been included in the interior of the Finch which allows for controlled gravitational fields to be applied within the Finch's cockpit and mechanical systems. The projected gravity fields are tuned to adapt to exterior gravitational forces, then regulate the forces to minimize stress upon the pilot in the event of an impact or rapid acceleration or deceleration. The system also responds to incoming scalar attacks and provides protection to the Finch's systems and pilot.

Life Support Systems

The Finch utilizes a basic air recycling system and temperature control system to provide the operator with one week of air and selectable ambient temperature. The system utilizes a simple air filter system and magnetic cooling and heating unit.

Power Systems

The Finch is powered by a [QNC](#) which provides power for the high demand systems of the Finch including propulsion and computing systems.

The Finch also utilizes a set of [Bacterial Charge Pack](#) units which supply life support and provides power for low-demand systems.

Propulsion

The Finch utilizes a [plasma thrust system](#) for its primary propulsion needs. An additional gravitic system has been added to provide increased maneuverability and precision handling.

Along with the flight systems, a set of retractable magnetic motor driven rollers have been included in the landing skids of the Finch which allow for the Finch to travel at high speeds upon surfaces. The skid units also can adjust to provide additional ground clearance for the Finch's belly.

Shield Systems

The Finch has been equipped with electromagnetic and gravitic [Lorath Shield System Technology](#).

Shield Points

12

External Lighting System

The Finch has been equipped with a job-specific external lighting system which includes red and blue high-visibility flashing lights, and a front-end headlamp which is capable of producing high intensity white-light which can project clearly up to five miles away from the Finch in atmosphere.

An additional set of external spotting lamps can be added to the Finch upon the operator's request.

High Intensity Audio Amplifier System

An external speaker has been placed upon the Finch which provides the operator the ability to announce messages at high volumes in focused or wide areas. The speaker system is capable of amplifying a standard speaking voice up to 120db. Along with voice amplification, the system includes a series of pre-recorded alert messages and a siren.

Unit Security System

Each Finch is equipped with a security system which is designed to automatically scan an operator's biometrics and compare them to the UOC and Lorath Matriarchy databases. If an un-authorized individual is detected attempting to utilize the Finch, the vehicle will not activate and a signal will be sent to the Finch's dispatch center indicating the location of the Finch and the data regarding the individual attempting to operate the Finch.

Weapons Systems



Note: Weapon load outs are optional, yet some packages are standard



Standard Peacekeeping Weapon Loadout

- [Electrolaser Emitter Rails](#): 2, Located on left and right sides of the Finch on the landing skids.
- Vehicle Mountable ["M'Cel" 40/30mm Grenade Launcher](#): 2, DR Varies depending on load³⁾, located in projectile weapon housing located on front section of landing skids, six rounds per launcher.
- Vehicle Mountable [LSDF "Hik'id" Plasma Assault Rifle](#): 1, Mounted on one of the two landing skids.
- Vehicle Mountable [LSDF "My'hyz" Service Rifle](#): 1, DR [Varies by ammunition](#), Mounted on one of two landing skids, three user selectable 60 round magazines.

Military Grade Loadout

- [Lorath Plasma Arc Disruptor](#) strips: 2, Located on left and right sides of the Finch landing skids in place of Electrolaser emitter rails.
- Vehicle Mountable ["M'Cel" 40/30mm Grenade Launcher](#): 2, DR Varies depending on load, located in projectile weapon housing located on front section of landing skids, six rounds per launcher.
- Vehicle Mountable [LSDF "Hik'id" Plasma Assault Rifle](#): 1, Mounted on one of the two landing skids.
- Vehicle Mountable [LSDF "Ek'yra" Railgun Service Rifle](#): 1, DR [Varies by ammunition](#), Mounted on one of two landing skids, three user selectable 60 round magazines.

- [Mi-Size Missile Rack](#): 1, DR varies with ammunition, 20 missiles.

Vehicle Complement

2: [Remote Medical Drones](#)

1)

United Manufacturing Cooperative - Pilot Pod - Military - 001

2)

United Manufacturing Cooperative - Pilot Pod - Peacekeeping -001

3)

Commonly loaded with less-than-lethal ordinance

From:

<https://wiki.stararmy.com/> - **STAR ARMY**

Permanent link:

https://wiki.stararmy.com/doku.php?id=corp:united_manufacturing_cooperative:starship:finch_patrol_pod

Last update: **2023/12/21 04:21**

