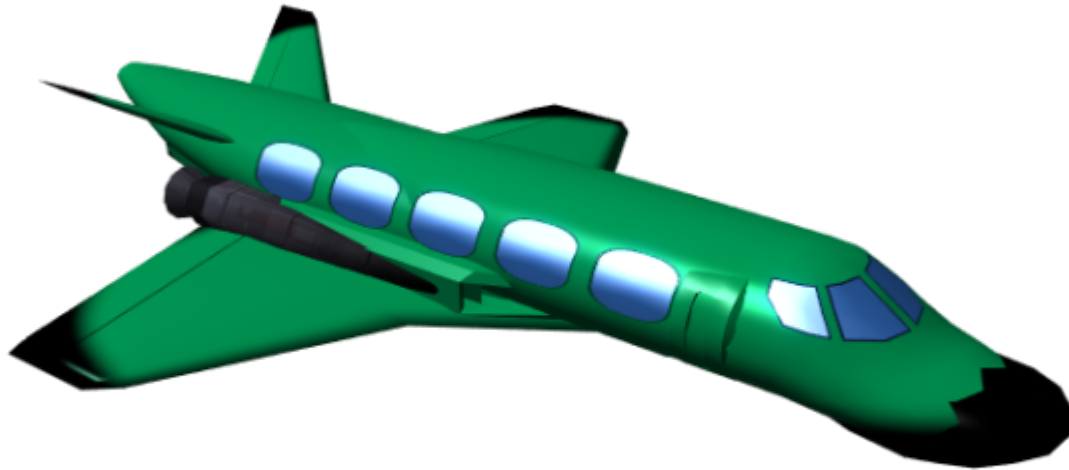


# Starlyte

The Starlyte is a small aerospace craft meant to act both as a regional business jet, and a high-speed commercial passenger liner, both in atmosphere and between star systems.



## About the Ship

The Starlyte is a small aerospace craft designed for functionality, ease of operation, and inexpensive maintenance. Utilizing many tried-and-true technologies which are generally considered obsolete, it provides an inexpensive platform for hauling passengers and cargo just about any distance, though its lack of supplies limits it to point-to-point flights rather than long roundabout journeys.

## Key Features

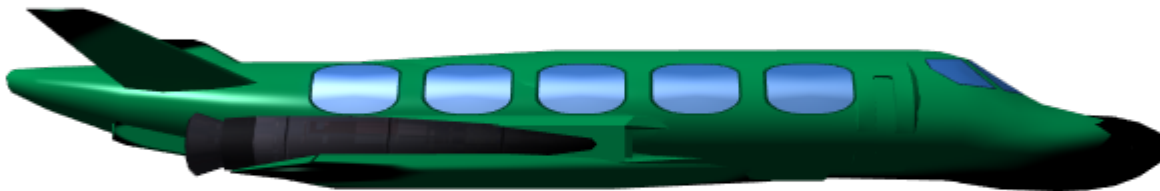
Capability for both Intercontinental, and intergalactic transport.

## Mission Specialization

The Starlyte excels at carrying a small number of people long distances quickly and efficiently.

## Appearance

The Starlyte consists of a squashed cylindrical fuselage, with an underslung set of lifting-body wings, and the engines buried in the wing roots. The nose is somewhat bulbous, and heavily heat shielded, and the rear-swept wings are complimented by v-shaped tail surfaces mounted on the back of the fuselage.





## History and Background

The Starlyte takes cues from its much larger, older brother, the [Starliner](#), by being a craft streamlined for the purpose and process of taking people from point A to point B, without the unnecessary frills often found on more common types of spacecraft. Essentially a modified Business jet, the Starlyte is capable both within an atmosphere, and in space, and performs its job more than adequately, despite the general lack of expensive technology many contemporary designs utilize.

## Statistics and Performance

### General

- Class: OI-Y2-1A,B,C,D
- Type: Passenger liner/Business jet
- Designers: [Origin Industries](#)
- Manufacturer: [Origin Industries](#), [Dawn Station](#)
- Production: Mass Produced
- Fielded by: Civilian organizations, [Star Army of Yamatai](#)

- Price: 23,000 KS (A) 27,000 KS (B) 33,000 KS (C) 30,000 KS (D)

## Passengers

- Crew: 3. Pilot, Copilot, Attendant.
- Maximum Capacity: 40 passengers (B), 20 passengers (C) 30 passengers (D). The A variant can hold up to 100 people, standing-room only.

## Dimensions

### External

- Length: 15.5 meters
- Width: 10 meters
- Height: 3.7 meters <sup>1)</sup>

### Internal

- Length: 12 meters
- Width: 4.2 meters
- Height: 2.5 meters

## Propulsion and Range

- **Hyperspace Fold Drive:** .5 ly/min
- **Sublight Engines:** .4c
- **In Atmosphere:** 2900 KM/h <sup>2)</sup>
- Range: Up to two months of fuel
- Lifespan: 50 years
- Refit Cycle: Yearly

## Damage Capacity

See [Damage Rating \(Version 3\)](#) for an explanation of the damage system.

- Hull: Tier 7 (Light Mecha)

## Inside the Ship

## Compartment Layout

All four models have the same internal dimensions; the only difference is the furniture available within the compartment.

### A Model

The A Model's main compartment is simply a 12mx4mx2.5m space. The floor is bare [Durandium Alloy](#) with a diamond plate texture to give it some grip. spaced evenly along the floor are anchor points to tie down cargo. There is a single miniature bathroom and kitchenette located near the cockpit for crew use.

The walls are clad in thin, bare durandium sheeting, which is simply screwed into the frame, and easy to remove and replace if it becomes damaged.

### B Model

The B Model is the Economy Liner model, which features forty seats, in ten rows of four abreast, with an aisle down the middle. The seats are fully adjustable, upholstered in synthetic cloth, with padded, stowable armrests. they feature trays and small viewscreens built into the backs of the seats in front of them (Or the wall, for the first row). the floors are covered in an inexpensive, but durable fabric. The colors and styles of all carpets and upholstery can be customized to the buyer's needs at no cost.

There are two small bathrooms and a mini kitchenette located at the rear of the cabin.

The walls are covered in painted carbon fiber, which has a very smooth texture and no sharp edges. This covering is lightweight and durable.

### C Model

The C Model is the Luxury liner. Its cabin is very plush, usually with natural wool carpets, and leather clad seats. There are only Twenty seats, each one built more like a recliner than an airline seat. these seats tilt, swivel, and are all around very comfortable, and allow passengers to turn and converse with those beside or behind them with ease. the seats are arranged in ten rows of two, with a large aisle down the middle. The colors and styles of all carpets and upholstery can be customized to the buyer's needs at no cost.

There are two small bathrooms and a mini kitchenette located at the rear of the cabin.

The walls are covered in Carbon fiber, that has been hand-clad in leather with a soft foam backing, making them very plush and rather comfortable to lean against.

## **D Model**

The D Model is the mixed-class liner. The rear section of the craft has twenty economy-style seats, which are exactly like the B model's, and the walls and flooring are similarly equipped. The front half, considered the 'first class' cabin, is separated by a thin wall, and decked out exactly like the C model's interior.

Unlike other models, the D model has a third restroom, exclusively for the use of the 'first class' cabin. it is located against the wall separating the two cabins.

## **Cockpit**

The cockpit is a simple affair, containing three seats- one for the Pilot, one of the Copilot, and one for the Attendant. The two pilots stations have identical controls, which control every function of the Starlyte; a toggle switch on the center console toggles control from one side to the other.

The Cockpit is separated from the cabins by a bulkhead, which contains a lockable door for pilot security.

## **Cargo Storage Areas**

Carry-on Compartments: Overhead compartments in the passenger cabins allow passengers to bring small amounts of stuff with them, for easy access during flights. These allow for about 6 cubic feet of cargo space per person on the ship, and line the ceilings.

# **Ship Systems**

## **Public Address**

The craft has a system of speakers connected to a handset in the cockpit, allowing the pilot to address the passengers at any time. A tone is generally played before the pilot speaks, to alert the passengers that the pilot is about to make an announcement.

## **Airlock Doors**

There are three airlock doors on the Starlyte, the two passenger-sized doors near the cockpit, and the one large cargo/boarding ramp at the rear. The Airlock itself is collapsible, and is stowed in its collapsed position during normal operation. These doors can be opened with the airlocks collapsed, but only if an atmosphere is present on the outside of the hull.

## Cargo/Boarding Ramp

Located at the rear of the craft, a cargo/boarding ramp allows for the loading and unloading of cargo and passengers to the rear. The surface of the ramp has excellent grip, and the angle it sits at is very shallow, making it easy to move people and objects up and down it.

## Hull and Hull Integrated Systems

the Starlyte's base structure is carbon fiber, which supports an outer shell of [Durandium Alloy](#). most of the hull is covered with [Endurium](#), though places that need extra heat shielding are covered in a double-thick layer of black-tinted [Boreanium Alloy](#). On the underside of the Hull is a retractable undercarriage which contains landing gear for landing on planets.

## Computers and Electronics

The Starlyte sports a [Destiny AI Knight Suite](#), which is located in the nose, in front of the cockpit. the Knight suite is a single unit that can be easily swapped out for repairs or replacement.

## Emergency Systems

- There is a fire suppression system built into the ship which can help during an on-board fire
- On the B, C, and D models, there are emergency "Life vests" In the seats, which are automatically deployed atmospheric containment units built into every seat, that activate in the event of a hull breach or loss of atmosphere. These consist of a polymer bubble that forms around the seat, hardening to contain atmosphere. The Bubbles are connected to the life support system, keeping the occupant alive for as long as the ship provides power to life support. In the event life support shuts off, the bubble can contain a passenger for 30 minutes before air runs out.
- In the event of an emergency, passengers should stay seated unless otherwise directed by the crew. If there is a hull breach, the life bubbles will activate, keeping them in place until an atmosphere is restored, at which point they deflate and contract into storage. If the ship must be evacuated, passengers are to file out of whichever door is nearest them, but in a vacuum, they may only use doors that have confirmed atmosphere on the other side, meaning they are docked with a rescue craft.

## Life Support Systems

**Environmental recycling system** The ERS is just a simple yet effective filtration system, which filters water and air, purifying it so it may be reused. Filters must be replaced after 5 years of continuous operation.

**AC system** A simple climate control system, it allows for cabin to be kept at a specific temperature. Controls are located in each cabin.

**Unidirectional Gravitational Plating:** Plating on the roof emits a pseudo-gravitational field that is attracted to the plates on the floor pushing everything on the ship 'down'. This creates the false sense of gravity that permeates the craft.

## Propulsion

**Hyperspace Fold Drive:** The Starlyte uses a very old type of Fold Drive, which, while efficient, reliable, and robust, requires the craft to do a run-up to .35c before it can engage. The Fold Drive is located in the tail, above the cargo ramp mechanisms.

**STL Propulsion:** The Starlyte uses a fusion plasma thruster system, with several nozzles all over the ship. the main nozzles point backward, and are exposed, while the rest of the nozzles are kept under pop-up panels. The Auxiliary nozzles provide directional control in vacuum, as well as assist the craft in STOL and, in low gravity, VTOL operations.

## Power

The Starlyte uses a [HONEY SLAM](#) to provide power and propulsion. The reactor is built into the underbelly and wing roots of the craft, and its fuel supplies are housed within the wings. The Starlyte has a double-capacity fuel system, allowing it two months of normal operations without the need to refuel.

## Shields

The Starlyte has extremely basic shielding, nothing more than a light 'screen' that is projected in front of the ship once it passes .15c, to protect the cockpit from high-speed particle impacts. it isn't really much use for much else, though.

## OOC Notes

- [DRv3 Update Approval Thread](#)

1)

Landing gear makes the craft sit at approximately 4 meters

2)

805 m/s

From:

<https://wiki.stararmy.com/> - **STAR ARMY**

Permanent link:

<https://wiki.stararmy.com/doku.php?id=corp:origin:starlyte>

Last update: **2023/12/21 00:58**





