

Standard Energy Pistol II

A generic energy pistol made by [Origin](#). It replaces the older [SEP I](#) as Origin's basic all-around energy weapon.



Weapon Specifications

The SEP II is a lightweight, multi-use pistol made by [Origin Defense Manufacturing](#) for the civilian market.

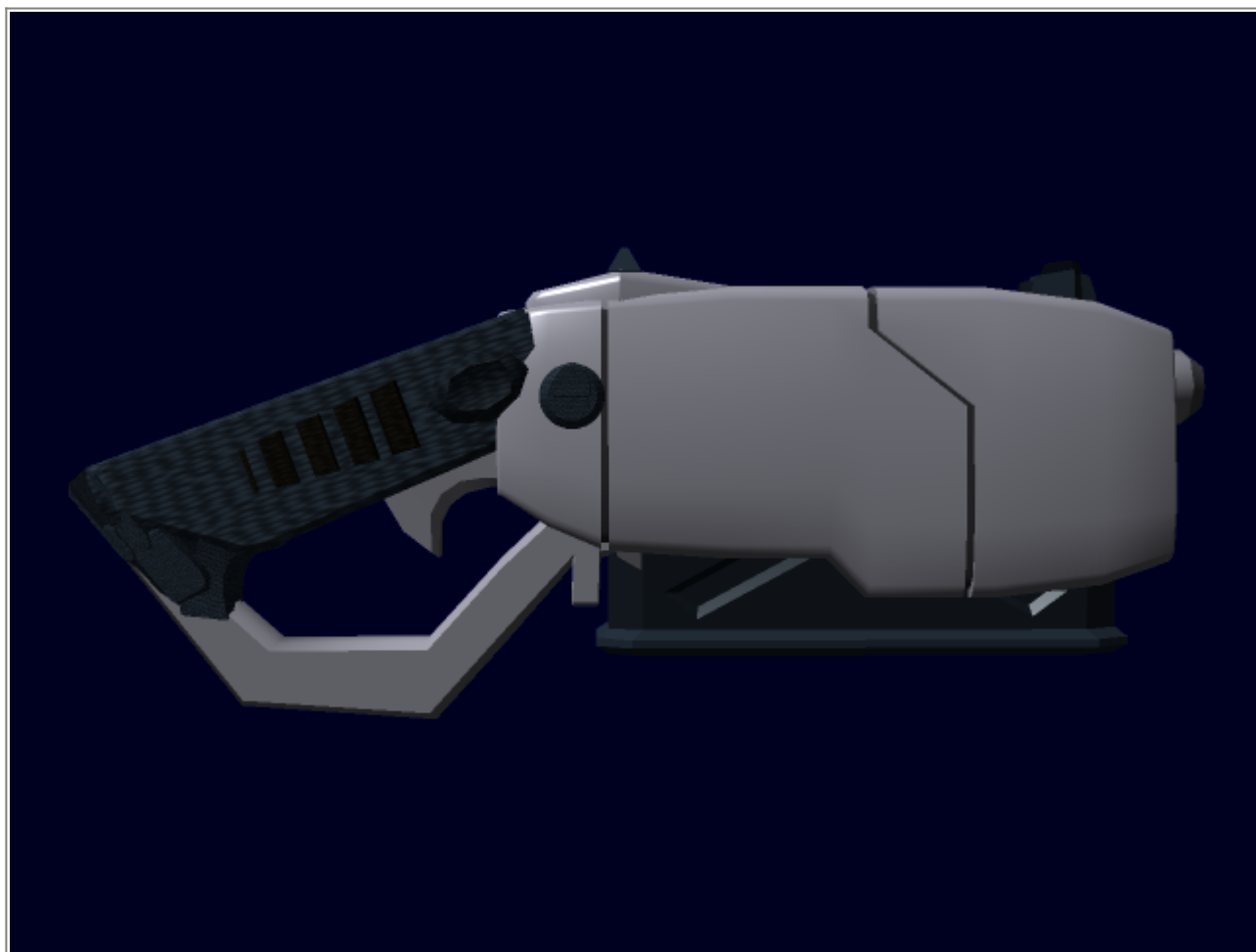
Nomenclature Information

- **Designer:** Rob Robertson III
- **Manufacturer:** [ODM](#)
- **Name:** Standard Energy Pistol II
- **Type:** Energy Pistol
- **Role:** Handgun/SMG
- **Length:** 10 inches

- **Barrel Length:** 6.2 inches
- **Mass:** 2.6 pounds
- **ROF:** 700 RPM Auto
- **Rounds per battery:** 300

Appearance

The SEP II is a rounded, rectangular-bodied gun, which has a barrel opening at the upper part of the body, with a small lens just below it. from the back of the pistol, a handle protrudes at an angle, and is protected by a wide U-shaped handguard that goes from the end of the grip back to the body of the weapon. at the bottom of the main body is a slot into which the large battery pack is inserted for use.



Profile view



Front view, showing barrel and camera

Discharge Information

Upon pulling the trigger, energy is drawn from the battery and focused through a series of lenses to produce a laser pulse. Stun mode fires an Electromagnetic pulse, which causes nerves to temporarily overload, causing pain and discomfort for up to an hour.

Ammunition Description

- **Power:** Tier 1, Light Anti-Personnel, Tier 0 (stun)
- **Effective Range:** 300 meters Semi-auto/auto, 75 Stun
- **Maximum Range:** 300 meters Semi-Auto/auto, 75 Stun
- **Muzzle Velocity:** 1C
- **Muzzle Blast:** A white flash in semi-auto mode, no flash for stun mode
- **Firing Modes:** Semi-automatic, Automatic, stun
- **Recoil:** none
- **Battery:** [Interchangeable High-Volume Capacitor](#)

Weapon Mechanisms

- **Safety:** button below the rear gun sights on the right
- **Fire Mode Selector:** auto/semi-auto/stun switch on the left side of the gun
- **Weapon Sight:** manual sights on top of the gun
 - Camera mounted on the front of the gun, beneath the barrel, to link with Power armors, or the [FatCOM](#)
- **Battery:**The Battery is removed by flipping a latch that is located between the handguard and battery.

Other

- **Field Maintenance Procedure:** Wipe and clean after every mission, taking care to scrub the barrel down

and all moving parts.

- **Pricing:**
 - Gun (includes 2 batteries and a charging station that can charge up to 5 batteries at a time.)- 375 KS

Replaceable Parts and Components:

- Extra Barrel - 50 KS
 - Barrels are changed by removing two screws in the battery compartment then pulling the barrel through the front of the gun.
- Camera - 25 KS
 - camera can be screwed off and replaced by being screwed back on.

Additional Ammo:

- [Extra battery](#) - 30 KS
- [Charging base](#) - 50 KS

Accessories:

- [FatCOM](#) - 500 KS
- Black Leather Holster, carries 1 extra battery (not included)- 50 KS
- Brown Leather Holster, carries 1 extra battery (not included)- 50 KS
- Origin Blue Leather Holster, carries 1 extra battery (not included)- 50 KS
- Origin Green Leather Holster, carries 1 extra battery (not included)- 50 KS

Products & Items Database	
Product Categories	weapons: pistols
Product Name	Standard Energy Pistol II
Manufacturer	Origin Industries
Price (KS)	375.00 KS

From:

<https://wiki.stararmy.com/> - **STAR ARMY**

Permanent link:

https://wiki.stararmy.com/doku.php?id=corp:origin:standard_energy_pistol_2

Last update: **2023/12/21 00:58**

