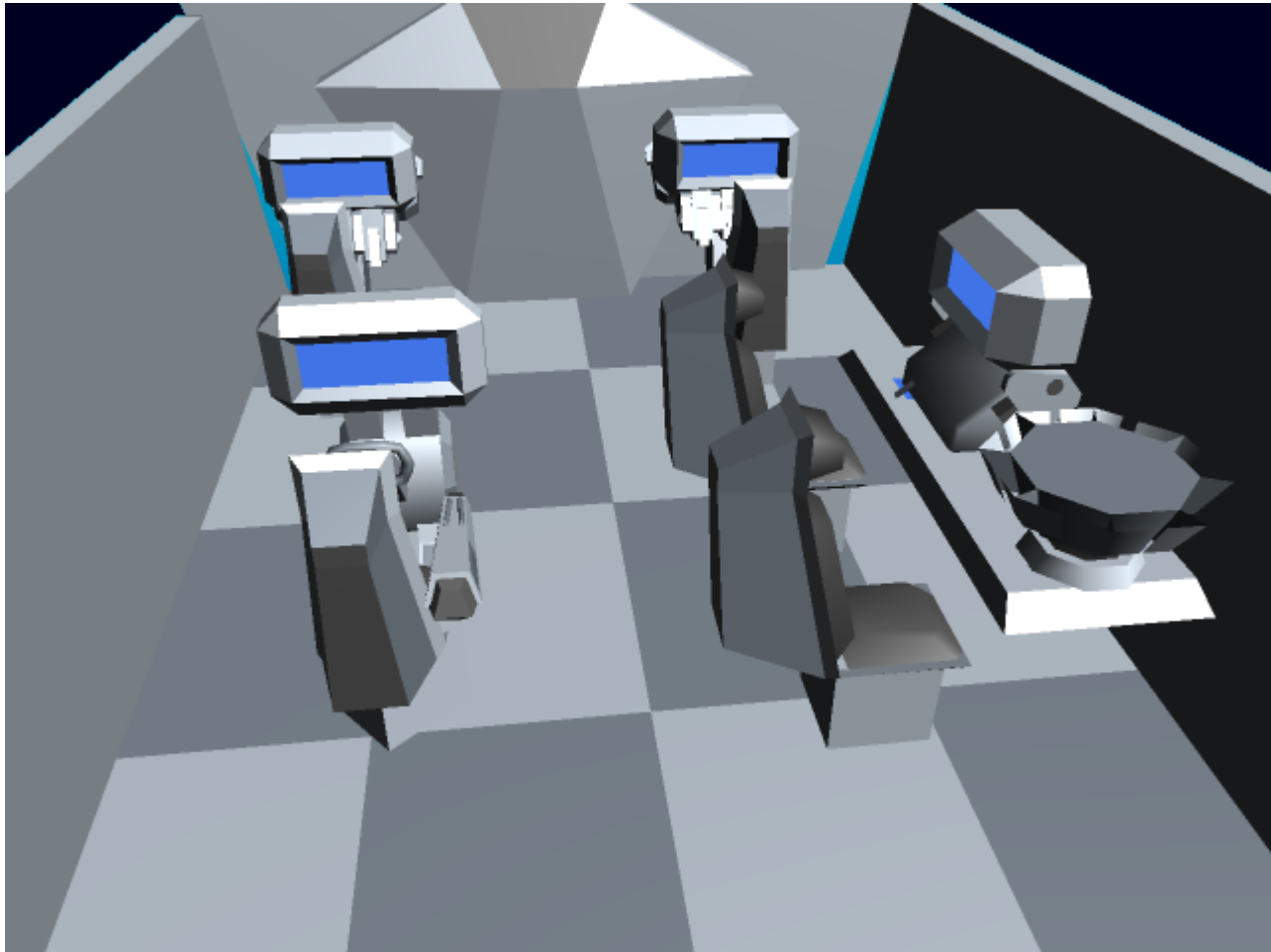


# Standard Bridge



The [Origin Industries](#) standard bridge is a basic bridge with all the necessary amenities: sensor, communications, navigation, and the all-important pilot's seat. In all there are five stations, including a secondary station which can do many of the functions of the other three non-pilot stations, though not quite as efficiently as the others. The pilot's station, too, can be used to perform all the vital functions of the ship.

Its main difference over the compact bridge is more room and better ergonomics. It is also possible to add extra stations, but doing so will void any warranty the ship may come with.

From:  
<https://wiki.starmy.com/> - **STAR ARMY**

Permanent link:  
[https://wiki.starmy.com/doku.php?id=corp:origin:interiors:standard\\_bridge](https://wiki.starmy.com/doku.php?id=corp:origin:interiors:standard_bridge)

Last update: **2023/12/21 04:21**

