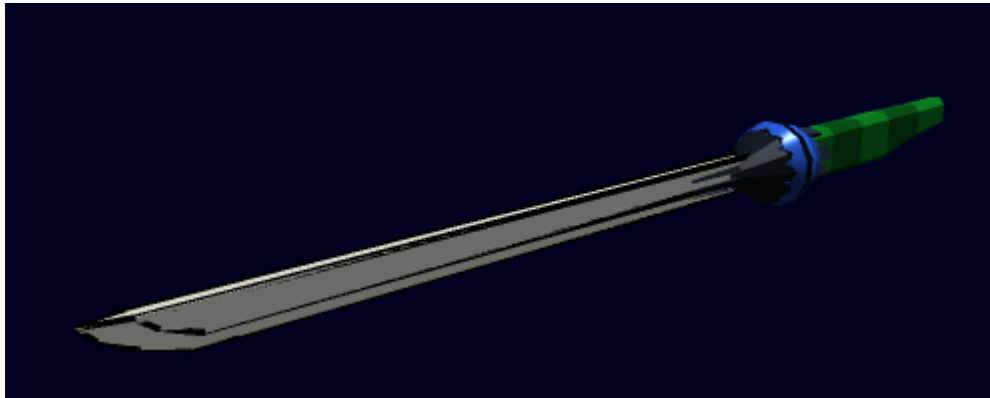


OI-M1-W3205 Chain Straight



The [Origin Industries](#) Origin Straight, designed in [YE 32](#) is a long, single-edged sword, meant for cutting into hostile powered frames. The cutting edge of the weapon is enhanced by a large chainsaw, that uses high-frequency vibrations and the heat generated by them to enhance the cutting power of the mono-molecular chainsaw teeth. The working part of the sword runs the upper two thirds of the blade, and is powered by a capacitor in the round section of the sword's hilt with enough energy for 4 minutes of operation, but can be recharged by the frame holding it. The sword-blade is made from [Nerimium](#) and [Endurium](#), with [Boreanium Alloy](#) being used for the teeth of the chainsaw and [Durandium Alloy](#) added in to keep the sword flexible so it won't break on contact. Because of the aggressive nature of the sword's cutting surface, the entire chainsaw chain is replaceable, allowing spent chains to be detached with the press of a button, and replaced with new ones. The hilt and handguard of the sword are made from [Durandium Alloy](#) for durability. The Origin Straight is 7.3 meters long from the tip of the blade to the butt of the hilt. When not in use, The sword is held in a special scabbard that can be hung at a Frame's side or from the back, with replacement chains stored in the scabbard that automatically attach when the chain-less sword is sheathed. 4 Replacement chains are stored in the scabbard.

- **Purpose:** Anti-Mecha
- **Structual Points (Mecha):** 8 SP
- **Damage(Slashing):** Tier 8 or Tier 9, Medium Anti-Mecha or Heavy Anti-Mecha (



: Staff needs to determine which)

- **Damage(Piercing):** Tier 3, Heavy Anti-Personnel
- Length: 7.3 meters
- Payload 5 Chains
- **Chain-Lifetime:** The Chain can last for the equivalent of 25 slashes, or a minute and a half of direct contact with a surface.

From:
<https://wiki.stararmy.com/> - **STAR ARMY**

Permanent link:
https://wiki.stararmy.com/doku.php?id=corp:origin:chain_sword

Last update: **2023/12/21 00:58**



