

OHI Standardized Housing Unit

The [Osman Heavy Industries](#) standardized housing unit was designed in [YE 44](#) in response to a request for proposal from the [New Dusk Conclave](#) for an affordable and easily deployed housing solution for its expanding population. The resulting product was a modestly sized single-bedroom self-contained apartment designed to be utilized as a component in larger construction projects.

History

In response to the Request For Proposal from the Conclave government as a part of the second phase of the [New Dusk Conclave Infrastructure and Expansion Initiative](#), Osman Heavy Industries began to investigate possible solutions for an easy to manufacture and easy to transport housing unit. One of the first places they looked was at the existing [Sunflower Corporation SSCC-XL Living Module](#) and the [Geshrinari Shipyards Passenger Module](#) or [Building Module](#).

OHI designers felt that devising a solution similar to the larger form factor Geshrinari modules would lead to a loss of flexibility for their product, but also felt that the SSCC-XL based living module devised by sunflower was, while closer to their desired solution, slightly cramped.

This led to the final format of the OHI Standardized Housing Unit. 15m long by 3m tall, like an SSCC-XL, the shell of the unit is actually constructed from scratch rather than utilizing existing cargo containers to allow for a slightly larger width of 3m. Taking inspiration from Sunflower's integration of some systems into the craft itself, the SHU integrates several systems into an under-floor crawlspace a half meter tall.

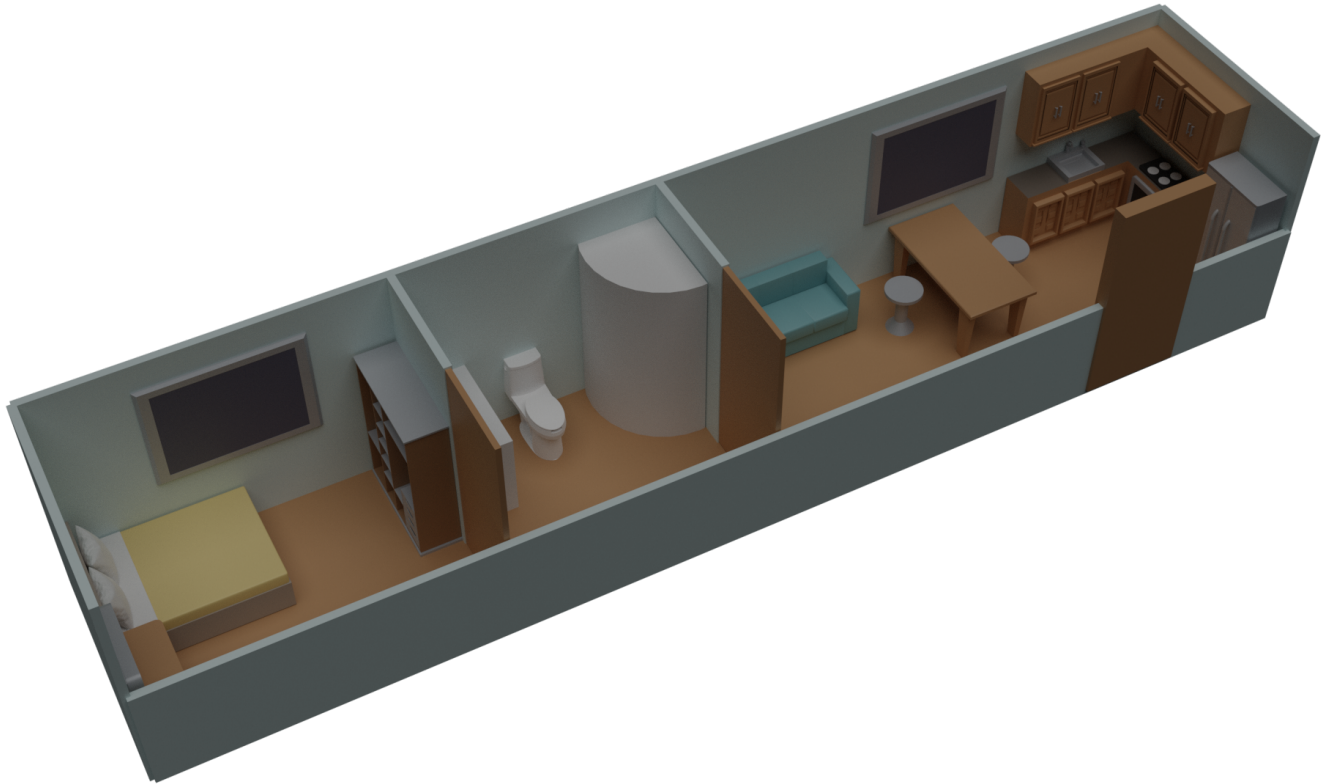
Included in these systems are battery banks, allowing units to be used to store power and distribute it within their building, or be used for off grid living if a generator were attached, and plumbing leading to a single hookup location for attachment to building mains or a recycling unit.

Description

The OHI Standardized Housing Unit is a 45 square meter¹⁾ one-bedroom apartment-style housing unit. It has three separate rooms, the bedroom, the bathroom, and the living/dining room. The bathroom separates the living/dining room from the bedroom, such that one can access it easily from any area of the housing unit. All three rooms include a window on the wall facing away from the door, though more can be added if the unit is intended for stand-alone use.

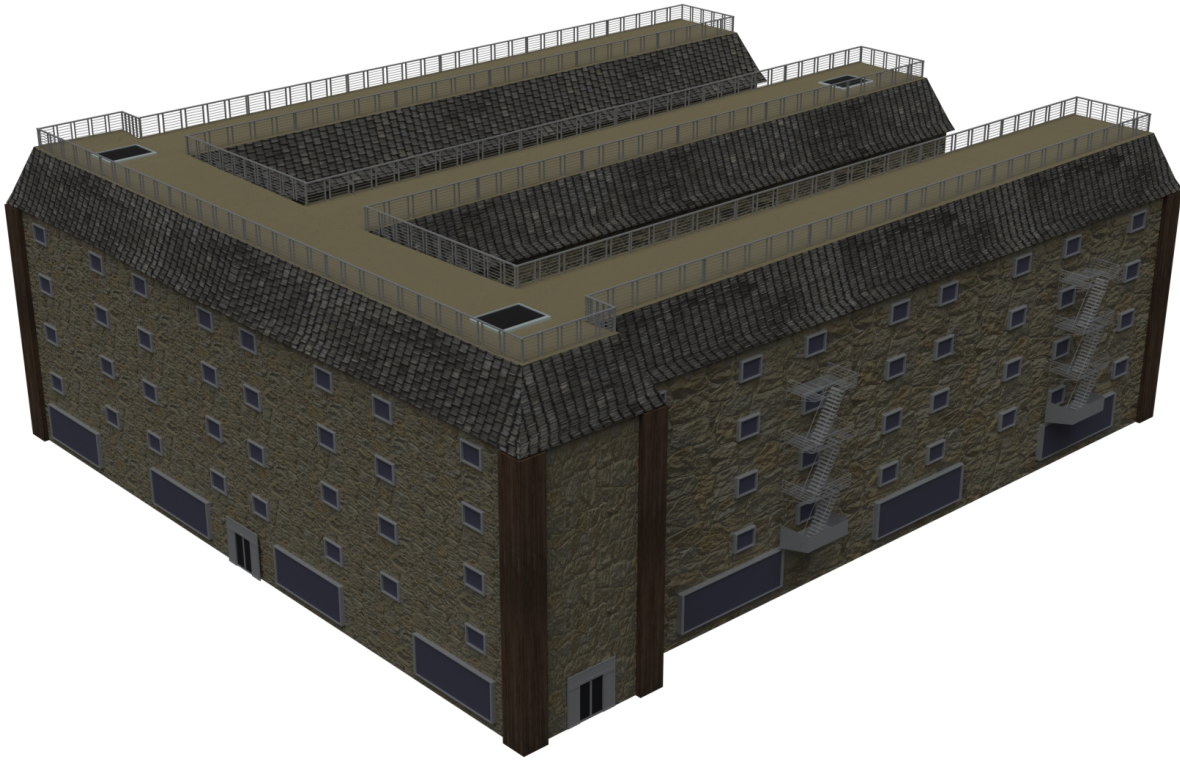
The living/dining room contains a small kitchen, complete with an electric cooktop and oven, dishwasher, and refrigerator. It also includes a combination washer/dryer below the sink. It has a small table, designed for two or three people, and a small couch. There is no entertainment unit included with the housing unit by default²⁾, as it is designed primarily for customers who make heavy use of augmented reality or mindware, such as New dusk Conclave citizens. The Bathroom contains a toilet, shower, and sink with a mirror, as well as a cupboard below the sink. Finally, the bedroom contains a double bed, a

wardrobe for use in storing personal possessions and clothing, and a desk.



Usage

While it is capable of being used in a single-unit structure, with the appropriate add-ons, the primary purpose of the SHU is to be integrated into larger residential buildings in new developments constructed by the New Dusk Conclave. The most commonly constructed format is a five-story low-rise building, with a common first floor, an attic, and a rooftop balcony, pictured below. Units constructed in the NDC tend to be finished out with a façade of local stone, as well as wood trim on the corners of the building.



OOC Notes

[Alex Hart](#) created this article on 2022/07/27 11:35.

[Approved](#)

¹⁾

484 square feet

²⁾

Though there are options available for various commercial entertainment systems

From:

<https://wiki.starmy.com/> - **STAR ARMY**

Permanent link:

https://wiki.starmy.com/doku.php?id=corp:ohi:housing_unit

Last update: **2023/12/21 00:57**

