

Ni-Y1-M3305 - Defense Module

A module that provides additional defense to the [Yimeya](#). It was first manufactured in [YE 33](#)

Statistical Data

General

Class: Module Nomenclature: Ni-Y1-M3302 Type: Defense Designers: [Nayacesen Industrials](#)
Manufacturer: [Geshrinari Shipyards](#) **Price:** 10,000 KS

Dimensions

Length: 30 meters Width: 30 meters Height: 16 meters Decks: 3 (4 meter)

Features

Fire Control Station

Although the turrets can be programmed to be operated by the ships onboard AI, there is still a fire control station that can be manned by one or two operators.

Systems

Reinforced Hull

The module is equipped with a reinforced armored hull that serves both to protect the module from outside assault but also to protect the insides in the event of a catastrophic systems failure. The ship is equipped with point three inches of [durandium plating](#). The framework of the module is [Durandium Alloy](#).

Intercom System add-on

Uses a station that ties into a standard [Ge-Y1-E3103 - Intercom System](#)

Module Connection Points

A series of four connection 'clamps' help to marry the module to the *Yimeya*, these clamps are made out of [Durandium Alloy](#), with four additional clamps located on the side of the ship that marry into four points on the side of the module.

Fusion Reactor

Located toward the rear of the module is its fusion power plant, designed to provide power for the module's systems and also its turrets.

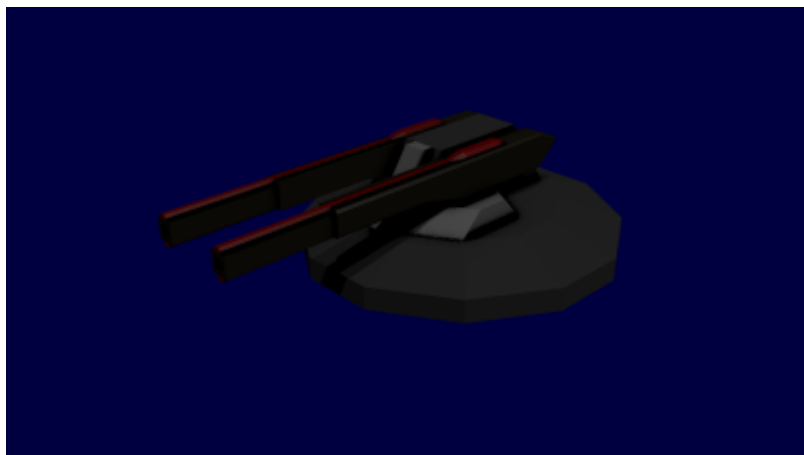
Emergency Systems

- Auto fire suppression (AFS) - When the AFS is activated it deploys a fire suppressing gas. This gas reduces the available oxygen so personnel in an affected area should leave, or don a portable air tank. Each compartment has sensors to detect smoke and or heat. When activated the system triggers a shipwide alarm over the intercom giving the location of the fire.
- Chemical extinguishers - These are present for manual use on electrical and metal fires.

Anti-Ship Turrets

The *Yimeya* has three [Ni-Y1-W3300 - Anti-Ship Turrets](#) located two on top and one below.

[Damage Rating \(Version 3\)](#) of 2 SDR



Graviton Beam Projector

The Graviton Beam Projector is for use in capturing a vessel. It allows the *Yimeya* to grapple the target vessel and hold it stationary. However, this can serve the additional purposes of locking down an

attacking ship to give the Yimeya's weapons the ability to pound the enemy.

Module Connection Points

A series of four connection 'clamps' help to marry the module to the *Yimeya*, these clamps are made out of [Durandium Alloy](#), with four additional clamps located on the side of the ship that marry into four points on the side of the module.

From:

<https://wiki.stararmy.com/> - **STAR ARMY**

Permanent link:

https://wiki.stararmy.com/doku.php?id=corp:nayacesen_industrials:ni-y1-m3305

Last update: **2023/12/21 00:57**

