

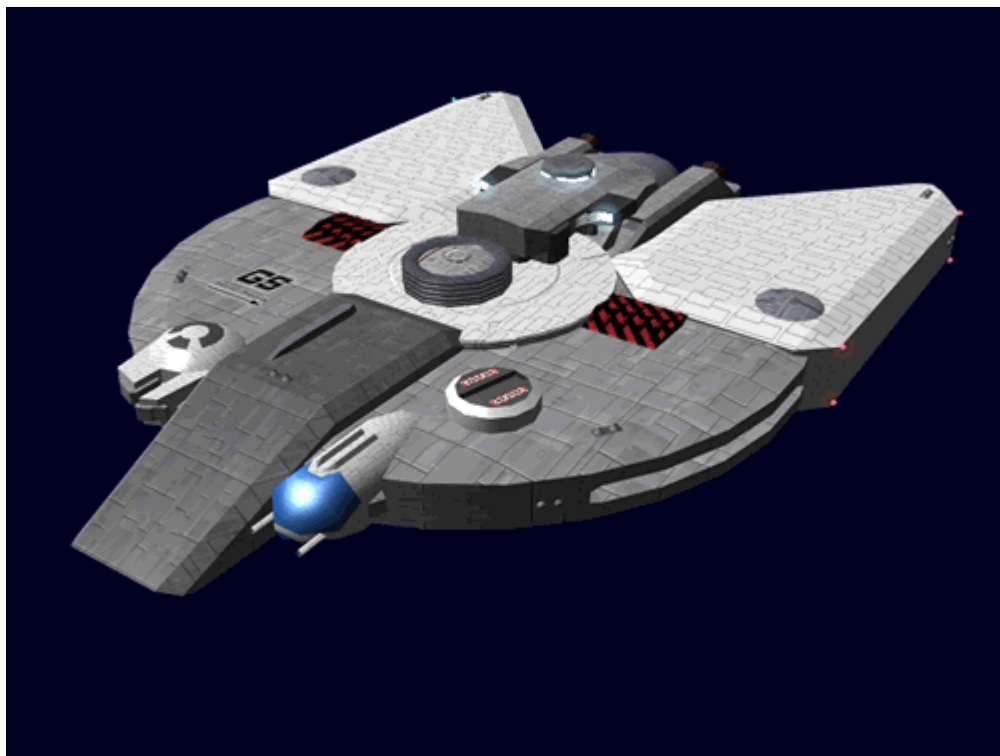
# Ge-L5-1A - Issoku-Class Cargo Runner

An upgraded version of the [Ge-F7-1B - Jinsoku Cargo Runner](#), it became available in [YE 34](#).



## About the Ge-L5

The Type 33 Cargo Runner or Issoku-Class, has all of the appealing features of the Type 30, it is a small, easily customizable starship designed for small cargo and passenger runs. It is the next in the Ge-F7 line, but was redesignated the Ge-L5 due to changes in nomenclature. The interior layout is the same as the original, it is the systems that have been upgraded giving the Ge-L5 better performance. Issoku means fast runner in [Yamataigo](#) (邪馬台語).



## History

The Ge-L5 project came about as a result of the [Tamahagane Corporation](#) working to revitalize the product line. Following the example of the Ge-T1 series shuttle, the decided to create an updated version of the Cargo Runner, but give it a higher performance. This way the product could appeal to a wider customer base by having two versions on the market. While the design work was accomplished in [YE 33](#), the models released in [YE 34](#).

## General

Class: Ge-L5-1A Type: Fast Freighter Designers: [Tamahagane Corporation](#) Manufacturer: [Geshrinari Shipyards](#) Production: Mass Production **Price:** 60,000 **KS**

## Crew and Accommodations

Crew: 6 (Can be operated by a single person)

## Dimensions

Length: 34 meters ( 111.5 feet) Width: 25.2 meters ( 50 feet) Height: 5.2 meters ( 17 feet) Decks: 1 (4 meters each)

## Speeds

The *Issoku* is a nimble vessel.

- **Atmospheric:** Mach 4
- **Combined Field System/Continuum Distortion Drive:**
  - **Minimum:** Resting motionless
  - **Sublight:** .3c
  - **Maximum Speed:** 12,500c (~1.43 ly/h)
- **Hyperspace Drive:** 394,470c (0.75 ly/m)

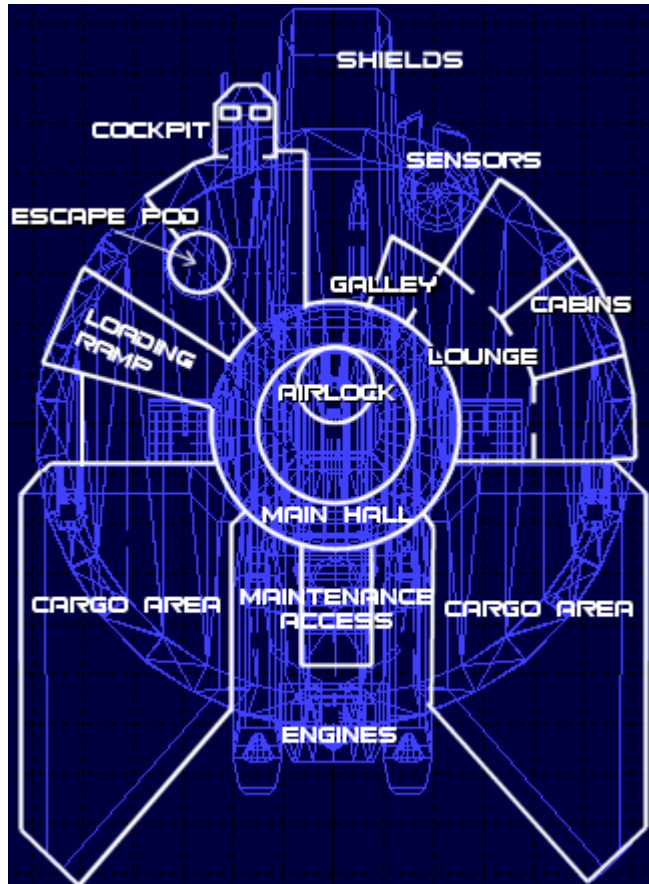
## Damage Capacity

See [Damage Rating \(Version 3\)](#) for an explanation of the damage system.

- Hull: 8 SP Starship
- Shields: 10 (Threshold 1)

## Inside the Ge-L5-1A

Like its predecessor the [Ge-F7-1B - Jinsoku Cargo Runner](#) is a very compact ship. The living areas have only 6.5 feet of clearance. However, unlike the Jinsoku, the accommodations are more polished. Passageways and the common rooms have an almost hotel feel to the decor.



### Bridge

The *Issoku* bridge design has the same features as the [Geshrinari Compact Bridge](#), but a different layout. The helm and nav stations are in the front located near the front, and the command station is located on the port side.

### Staterooms

The *Issoku* is equipped with three [Geshrinari Standard Crew Quarters](#). The owner can decide if they want the rooms configured for single or dual occupancy.

### Lounge

There is a small [Geshrinari Lounge](#) located at the end of the crew section.

## Galley

Located forward of the staterooms is the [Geshrinari Galley](#), although it lacks most of the amenities. It is designed to handle reheating prepackaged meals, and preparing simple meals. It has a small dishwasher under the counter for cleaning dishes, cutlery, and cookware

## Cargo Area

The *Issoku* has two cargo areas. They are loaded from the exterior doors, but there is a [Geshrinari Standard Door](#) on the inside of each for the crew to access them from the interior.

## Engineering

The *Issoku* has a compact engineering section, it is a cramped space and not intended for personnel to stay in for any period of time. It houses the generators, life support, and fold systems.

## Airlock

The *Issoku* like its predecessor has essentially two airlocks. On the port side there is a ramp with a small airlock for surface use. Accessed from the center of the ship is a docking [Geshrinari Airlock](#) that is accessed through the top of the ship.

## Amenities

Located next to the loading ramp is the *Issoku's* amenities. This contains two showers, toilets and sinks. There is also a pair of washer/drier units for cleaning clothes.

## Systems

### Armored Hull

The *Issoku* is built with a [Ge-L5-H3300 Spacecraft \(DO\) Hull Construction](#)

## Computer

The *Issoku* features a [Ge-Y2-E3300 - Hogosha Quantum Computer System](#) for its computer requirements.

## Communications

The *Issoku* is equipped with a [Ge-Y1-E3103 - Intercom System](#) for internal communications, and a [Ge-Y2-E3302 - Communications Suite](#) for external communications.

## Emergency Systems

### Blast Shutters

The *Issoku* is equipped with [Geshrinari Blast Shutters](#) to prevent explosive decompression. They are located at the cargo doors, the engineering space.

### Fire Suppression

The *Issoku* is equipped with the [Ge-Y1-E3104 - Automatic Fire Suppression System](#) for controlling fires on board.

### Escape Pod

The *Issoku* is equipped with a single [Ge-X3300 - Type 33 Escape Pod](#) located just aft of the bridge.

## Sensors

The *Issoku* is equipped with [Ge-Y2-E3301 - Standard Starship Sensors](#).

## Life Support

The *Issoku* is equipped with a [Ge-Y1-V3100 - Life Support System](#) capable of providing life support for 18 persons. The atmospheric systems, air and temperature systems are beneath the floor of the main hall. Located about in the center of the hall. Located closer to the generator is the water system. The gravity system is distributed about the ship in the floor and the outer walls.

## Power

The *Issoku* is fitted with a [Geshrinari Aether Generator](#) that supplies all its power requirements.

## Propulsion

The *Issoku* is equipped with the following propulsion systems:

### Turbo Plasma Drives

The *Issoku* is equipped with a cluster of these drives referred to as [Ge-L5-P3300 Turbo Plasma Drives](#)

### CDD

The *Issoku* is equipped with a [Ge-L5-P3301 Continuum Distortion Drive](#)

### Fold

The *Issoku* is capable of [Hyperspace Travel](#) by means of its [Ge-L5-P3302 Hyperspace Drive](#)

### Thrusters

The *Issoku* performs attitude control, and station keeping by using 16 [Ge-L5-P3303 Maneuvering Thrusters](#).

## Landing Gear

The *Issoku* is equipped with three pneumatically controlled landing gear. When not used they retract into the lower hull space.

## Shields



The *Issoku* is equipped with a [Geshrinari Combined Field System](#) for defense. They are housed in the section of the ship in the front to the starboard of the bridge.

## Weaponry

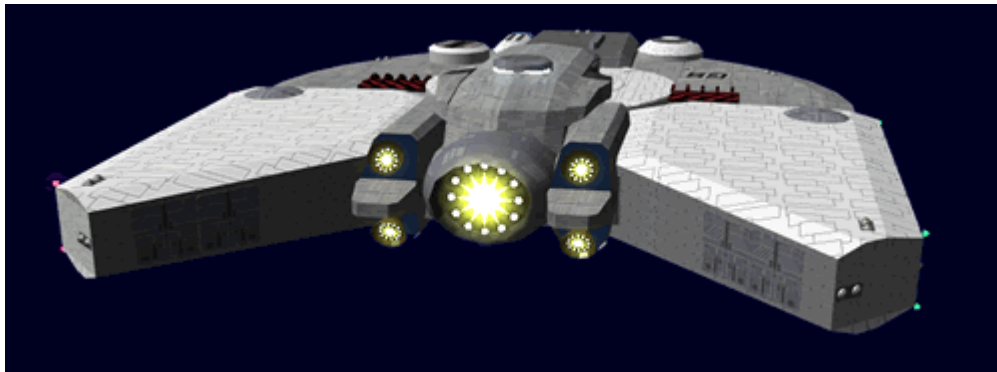
The *Issoku* comes equipped with only two plasma cannons. But it has four weapon hard points that the owner can install weapons into. This gives the owner the flexibility to choose what weapons they desire.

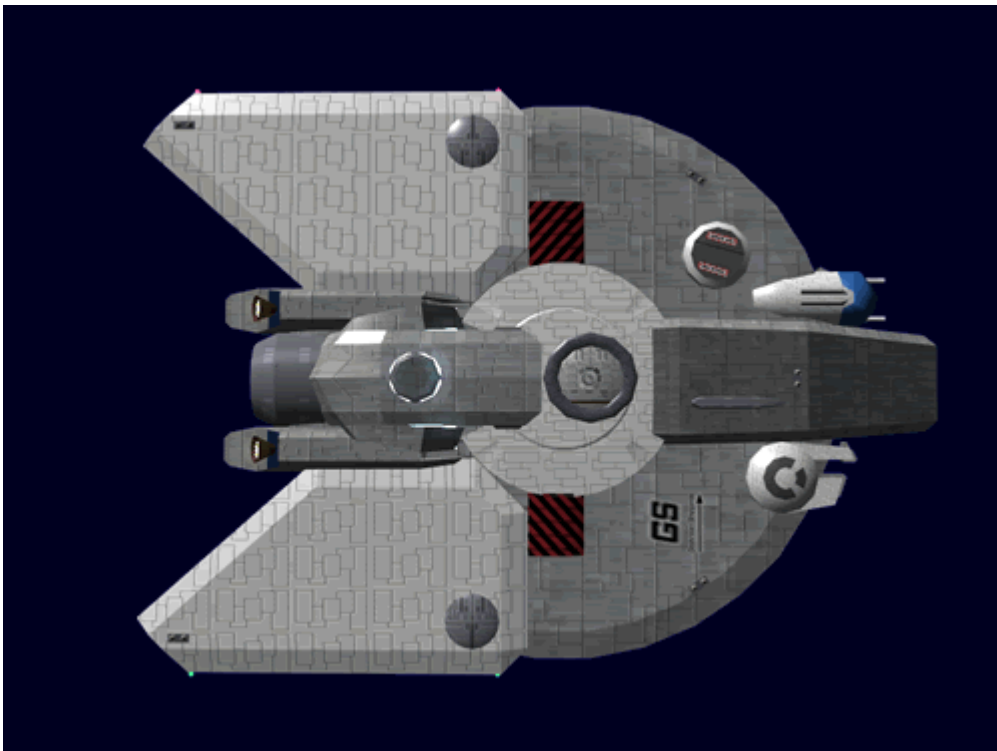
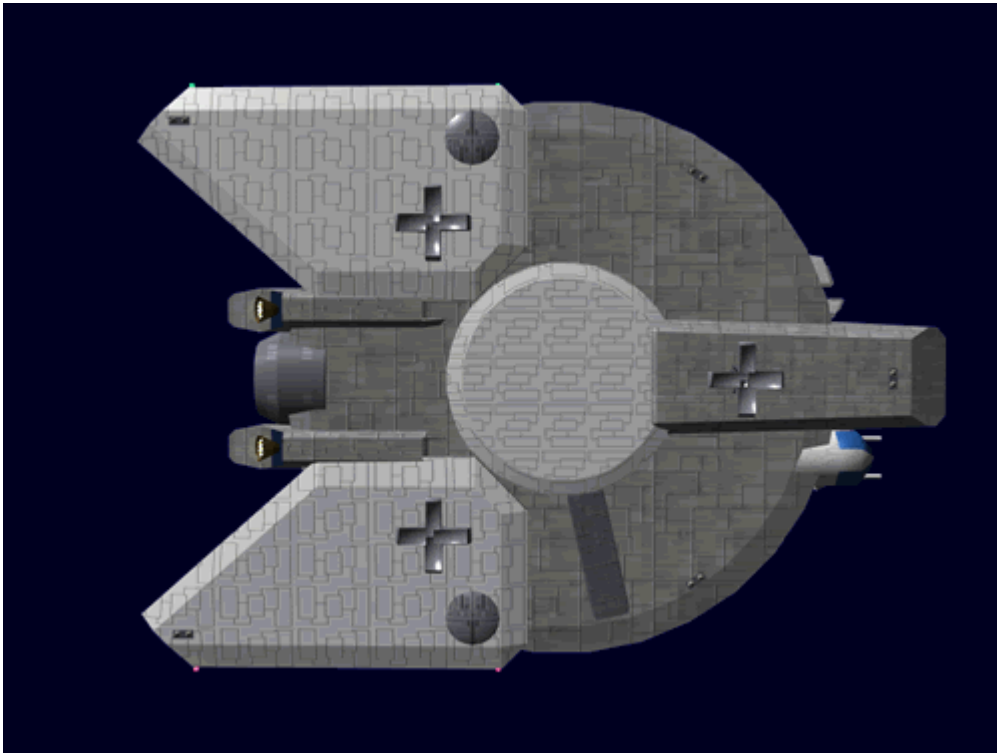
- Twin fore-mounted plasma cannons, 2 [SDR](#)
- Empty hard point
- Empty hard point
- Empty hard point
- Empty hard point

## Available Weapons

- [Ge-Y1-W3100 - Anti-Ship Turrets](#) Tier 10, Light Anti-Starship
- [Ge-Y2-W3300 - Anti-Armor Turrets](#) Tier 9, Heavy Anti-Mecha/Tier 8 or Tier 9, Medium Anti-Mecha or Heavy Anti-Mecha (  **Fix Me!** : Staff needs to determine which)
- [Ge-C1-W3302 - Anti-Fighter Turret](#) Tier 7 or Tier 8, Light Anti-Mecha or Medium Anti-Mecha (  **Fix Me!** : Staff needs to determine which)
- [Ge-Y2-W3301 - Suisei Active Anti-Missile System](#) 2 missile 1 ADR, 4 missile 2 ADR

## Views





## Standard Equipment

- 1 [EM-G16-1B Medical Kit](#)
- 1 [EM-G17-1a Basic Tool Kit](#)



- 1 [EM-G17-2a Repair Kit](#)
- 1 [EM-G18-1a Ship Hull Patch Kit](#)

## OOC Notes

- Created by [Nashoba](#). Artwork very likely created by the same. Approval thread here:<sup>1)</sup>

Products & Items Database	
Product Categories	starships
Product Name	Issoku-Class Cargo Runner
Nomenclature	Ge-L5-1A
Manufacturer	<a href="#">Geshrinari Shipyards</a>
Year Released	<a href="#">YE 30</a>
Price (KS)	60 ,000.00 KS

<sup>1)</sup>

<https://starmy.com/roleplay-forum/threads/geshrinari-cargo-runner-variant.7353/post-119565>

From:

<https://wiki.starmy.com/> - **STAR ARMY**

Permanent link:

[https://wiki.starmy.com/doku.php?id=corp:geshrinari\\_shipyards:type\\_33\\_cargo\\_runner](https://wiki.starmy.com/doku.php?id=corp:geshrinari_shipyards:type_33_cargo_runner)

Last update: **2024/02/25 10:23**

