

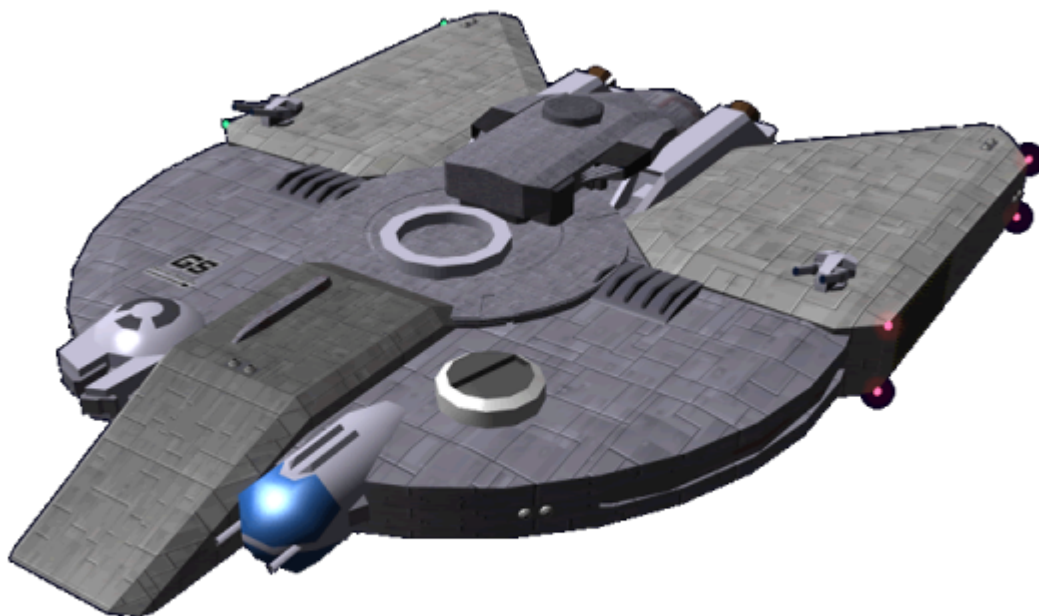
# Ge-F7-1B - Jinsoku Cargo Runner

A competitor to the [Ge-F6-1A - Light Freighter](#), the [Geshrinari Shipyards](#) Jinsoku or Type 30 Cargo Runner is a small, easily customizable starship designed for small cargo and passenger runs. It became available in [YE 30](#).



## About the Ge-F7

The Type 30 Cargo Runner or Jinsoku-Class, is a small, easily customizable starship designed for small cargo and passenger runs. Jinsoku means swift in Yamataian. These design factors affected many aspects of the ship. Such as a thinner hull, and depending more on shielding. In [YE 33](#) when the work started on the [Ge-L5-1A - Issoku-Class Cargo Runner](#) the Type 30 was renamed to Jinsoku-Class.



## History

The Ge-F7 was developed in [YE 30](#) as a small, easily customizable starship designed for small cargo and passenger runs. In [YE 34](#) the design was upgraded to a 1B which upgraded many of the systems to standard ones by [Geshrinari Shipyards](#). All new Ge-F7 will be 1B's.

## General

- Class: Ge-F7-1A\1B
- Type: Fast Freighter
- Designers: [Geshrinari Shipyards](#)
- Manufacturer: [Geshrinari Shipyards](#)
- Production: Mass Production
- **Price:** 40,000 [KS](#) new
- **Upgrade:** 10,000 [KS](#)

## Crew and Accommodations

Crew: 6 (Can be operated by a single person)

## Dimensions

- Length: 34 meters ( 111.5 feet)
- Width: 25.2 meters ( 50 feet)
- Height: 5.2 meters ( 17 feet)
- Decks: 1 (4 meters each)

## Speeds

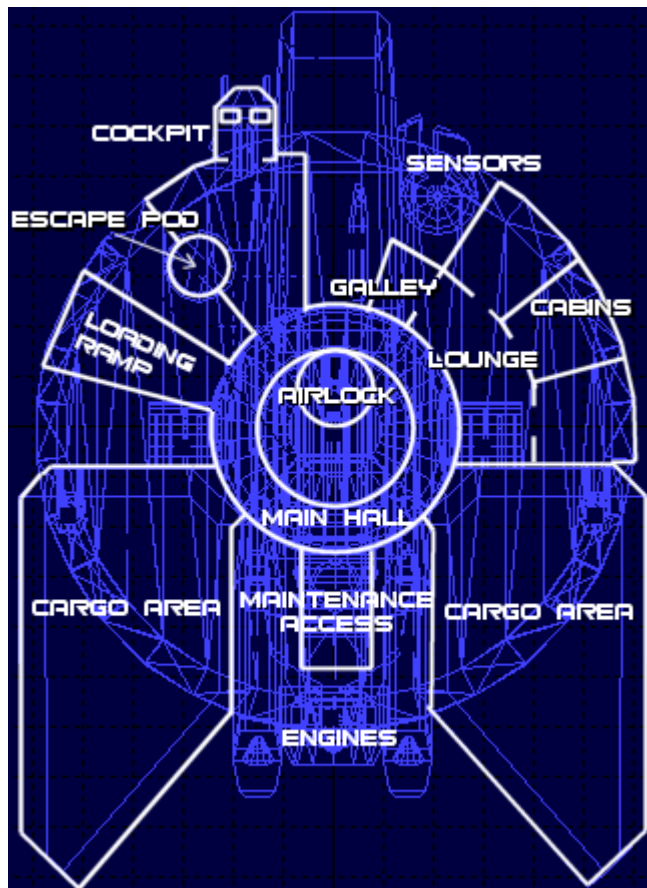
The *Jinsoku* is a nimble vessel.

- **Atmospheric:** Mach 4
- **Combined Field System/Continuum Distortion Drive:**
  - **Minimum:** Resting motionless
  - **Sublight:** .25c (~74,948 kilometers per second)
  - **Maximum Speed:** 10,000c
- **Hyperspace Drive:** (0.5 ly/m)

## Inside the Type 30



The Jinsoku is a very compact ship. The living areas have only 6.5 feet of clearance. By default the accommodations are rather spartan. Passageways and the common rooms have an almost industrial feel to the decor.



## Bridge

The *Jinsoku* bridge design has the same features as the [Geshrinari Compact Bridge](#), but a different layout. The helm and nav stations are in the front located near the front, and the command station is located on the port side.

## Staterooms

The *Jinsoku* is equipped with three [Geshrinari Standard Crew Quarters](#). The owner can decide if they want the rooms configured for single or dual occupancy.

## Lounge

There is a small [Geshrinari Lounge](#) located at the end of the crew section.

## Galley

Located forward of the staterooms is the [Geshrinari Galley](#), although it lacks most of the amenities. It is designed to handle reheating prepackaged meals, and preparing simple meals. It has a small dishwasher under the counter for cleaning dishes, cutlery, and cookware

## Cargo Area

The *Jinsoku* has two cargo areas. They are loaded from the exterior doors, but there is a [Geshrinari Standard Door](#) on the inside of each for the crew to access them from the interior.

## Engineering

The *Jinsoku* has a compact engineering section, it is a cramped space and not intended for personnel to stay in for any period of time. It houses the generators, life support, and fold systems.

## Airlock

The *Jinsoku* like its predecessor has essentially two airlocks. On the port side there is a ramp with a small airlock for surface use. Accessed from the center of the ship is a docking [Geshrinari Airlock](#) that is accessed through the top of the ship.

## Amenities

Located next to the loading ramp is the *Jinsoku's* amenities. This contains a shower, a toilet and a sink.

# Systems

## Armored Hull

The *Jinsoku* 1B is built with a [GE-T1-H3100 - Spacecraft \(DD\) Hull Construction](#). It is only 25 centimeters thick.

## Computer

The *Jinsoku* 1B features a [Ge-Y2-E3300 - Hogosha Quantum Computer System](#) for its computer requirements.

## Communications

The *Jinsoku* 1B is now equipped with a [Ge-Y1-E3103 - Intercom System](#) for internal communications, and a [Ge-Y2-E3302 - Communications Suite](#) for external communications.

## Emergency Systems

### Blast Shutters

The *Jinsoku* is equipped with [standard\\_shutters](#) to prevent explosive decompression. They are located at the cargo doors, the engineering space.

### Escape Pod

The *Jinsoku* 1B is equipped with a single [Ge-X3300 - Type 33 Escape Pod](#) located just aft of the bridge.

## Sensors

The *Jinsoku* 1B is equipped with [Ge-Y2-E3301 - Standard Starship Sensors](#).

## Life Support

The *Jinsoku* 1B is equipped with a [Ge-Y1-V3100 - Life Support System](#) capable of providing life support for 18 persons. The atmospheric systems, air and temperature systems are beneath the floor of the main hall. Located about in the center of the hall. Located closer to the generator is the water system. The

gravity system is distributed about the ship in the floor and the outer walls.

## Power

The *Jinsoku* is fitted with a [Geshrinari Aether Generator](#) that supplies all its power requirements.

## Propulsion

The *Jinsoku* is equipped with the following propulsion systems:

### Graviton Drives

The *Jinsoku* is equipped with a cluster of these drives referred to as [Ge-F7-En1A graviton engines](#).

### CDD

The *Jinsoku* is equipped with a [Ge-F7-Cd1A Continuum Distortion Device](#).

### Fold

The *Jinsoku* is capable of [Hyperspace Travel](#) by means of its [Ge-F7-Fd1A Hyperspace Fold Drive](#).

## Landing Gear

The *Jinsoku* is equipped with three pneumatically controlled landing gear. When not used they retract into the lower hull space.

## Shields

The *Jinsoku* is equipped with a [Geshrinari Combined Field System](#) for defense. They are housed in the section of the ship in the front to the starboard of the bridge.

## Weaponry

The *Jinsoku* comes equipped with only two plasma cannons. But it has four weapon hard points that the

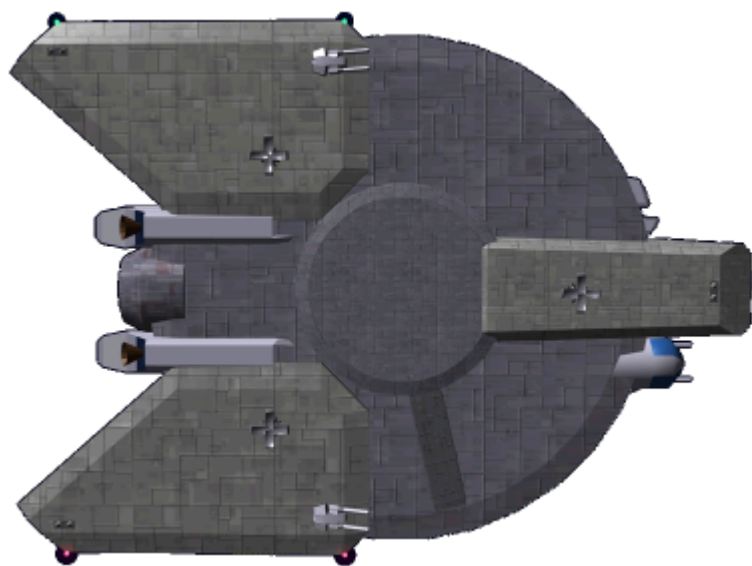
owner can install weapons into. This gives the owner the flexibility to choose what weapons they desire.

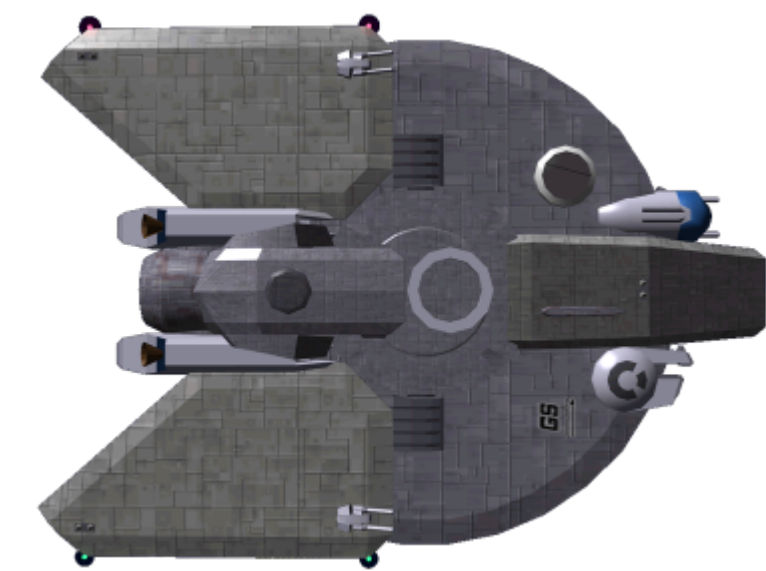
- Twin fore-mounted plasma cannons, 2 [SDR](#)
- 4x Twin laser turrets (2x dorsal, 2x ventral), 1 [SDR](#)

## Standard Equipment

- 1 [EM-G16-1B Medical Kit](#)
- 1 [EM-G17-1a Basic Tool Kit](#)
- 1 [EM-G17-2a Repair Kit](#)
- 1 [EM-G18-1a Ship Hull Patch Kit](#)

## Other views





# OOC Notes

- 3D art for this ship was modeled by Wes and rendered by Nashoba.<sup>1)</sup> Interior map by Wes.

Products & Items Database	
Product Categories	starships
Product Name	Jinsoku Cargo Runner
Nomenclature	Ge-F7-1B
Manufacturer	Geshrinari Shipyards
Year Released	YE 30
Price (KS)	40,000.00 KS

<sup>1)</sup>  
<https://stararmy.com/roleplay-forum/threads/identifying-nashobas-3d-work.71633/post-445186>

From:  
<https://wiki.stararmy.com/> - **STAR ARMY**

Permanent link:  
[https://wiki.stararmy.com/doku.php?id=corp:geshrinari\\_shipyards:type\\_30\\_cargo\\_runner](https://wiki.stararmy.com/doku.php?id=corp:geshrinari_shipyards:type_30_cargo_runner)

Last update: **2024/02/19 18:53**

