

# Ge-L8-1a - Jōkyaku-Class Passenger Ship



The Jōkyaku-Class combines passenger capability and cargo in an efficient package. It became available in [YE 36](#). The version of this ship re-designed for disaster recovery operations is the RDRS Ge-L8-1b - Jōkyaku-Class Passenger Class Ship.

## About

This class of ship was originally designed for a balance of passengers and cargo. It features a flexible cabin arrangement allowing the owner to increase the number of passengers with no major structural changes. The ship features twenty four [Ge-X3300 - Type 33 Escape Pod](#), allowing the ship to safely evacuate up to 120 persons. The Jōkyaku-Class is intended to travel in relatively safe regions. For this reason it is lightly armed. They are common at all [Ge-H2-1a - Amatsu-Class Spaceport](#), and most corporate ground facilities without orbital stations.

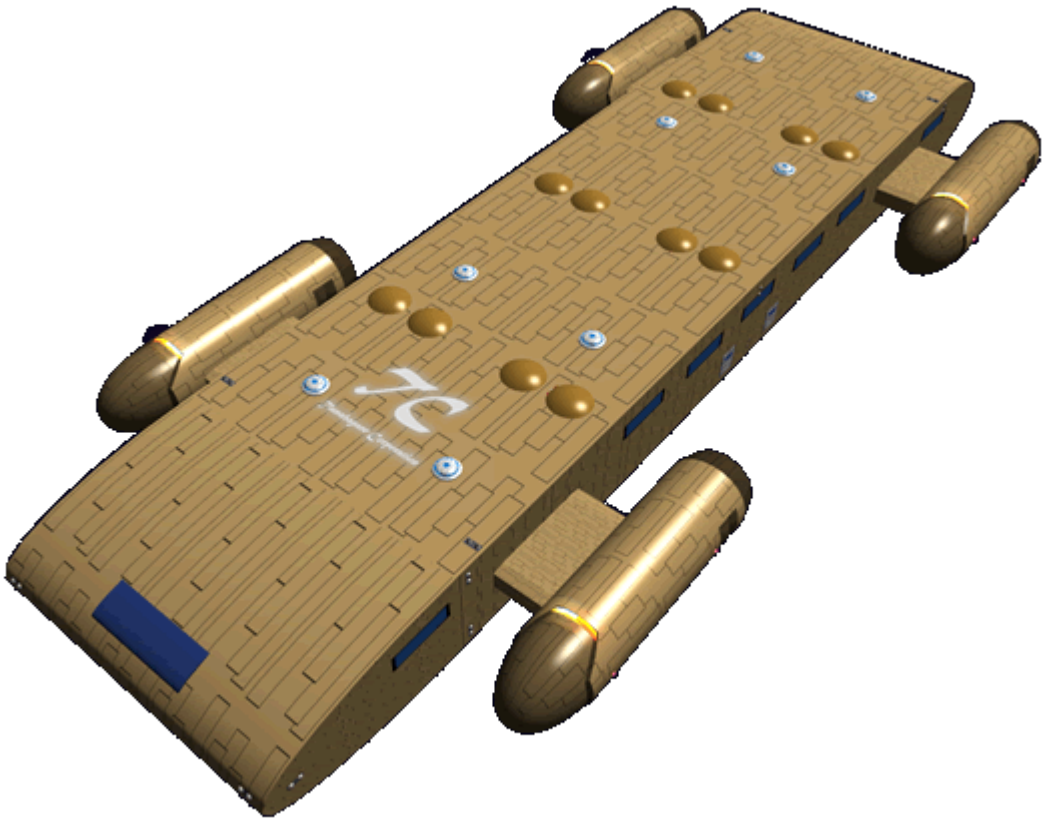
## History

The Jōkyaku-Class was developed to ferry employees within the [Tamahagane Corporation](#) to and from other corporate facilities at no expense. After production started the corporation decided to offer it on the market for use by independents, or other companies.

## Appearance

The Jōkyaku-Class has a very simple streamlined appearance. The body is rectangular with the bow and stern being curved. There are four nacelles that house the STL and graviton engines. A large view port is visible on the bow providing a view from the lounge. There are six large view ports on either side of the ship which allow the passengers and crew to look at the space they are in. Two airlocks are present on the lower level on both sides. A cargo door is visible on the stern and shuttle bay doors for the bow. The protective covers for the [Ge-X3300 - Type 33 Escape Pod](#) dot the dorsal and ventral surfaces. Likewise the plasma arrays are also visible.

The corporate ships are painted the standard [Tamahagane Corporation](#) scheme. Generic ones are painted white, but customers can customize the hull colors.



## Statistical Data

This section provides operational details for the Jōkyaku-class ship. Customization is possible at cost to the owner.

Jōkyaku-Class	
Nomenclature:	Ge-L8-1a
Type:	Freighter
Class:	Passenger
General	
Designers:	Tamahagane Corporation R&D
Manufacturer:	Geshrinari Shipyards
Price:	100,000 <span>KS</span>
Dimensions	
Length:	120 meters ( 393 feet)
Width:	44 meters ( 144.32 feet)
Height:	Height: 10 meters ( 32.8 feet)
Performance	

Atmospheric	4,900 km/h, or 3.044.8 mph (Mach 4)
Min speed:	0
Space	
CDD Cruise speed:	.3c (~89,937 kilometers per second) (~55,884 miles per second)
CDD Maximum speed:	12,500c (~1.43 ly/h)
Hyperspace fold:	394,470c (0.75 ly/m)
<b>Occupancy:</b>	
Crew:	Crew: 19 (Can be operated by a single person)
Passengers:	48 or 96 depending on configuration
<b>Systems</b>	
Hull:	<a href="#">GE-T1-H3300 - Spacecraft (DO) Hull Construction</a>
Propulsion:	<a href="#">Geshrinari Hyperspace Fold Drive Geshrinari Continuum Distortion Drive</a>
Power:	<a href="#">Geshrinari Aether Generator</a>
Control:	<a href="#">Ge-Y2-E3300 - Hogosha Quantum Computer System</a>
Sensors:	<a href="#">Ge-Y2-E3301 - Standard Starship Sensors</a>
Shields:	<a href="#">Geshrinari Combined Field System</a>
Weapons:	16 <a href="#">Ge-E1-W3400 - Dual Plasma Array</a>

## General

- Class: *Jōkyaku*-class
- Nomenclature: Ge-L8-1a
- Type: Passenger Freighter
- Designers: [Tamahagane Corporation R&D](#)
- Manufacturer: [Geshrinari Shipyards](#)
- **Price:** 100,000 [KS](#) (Without customization, or weapons)

## Crew and Accommodations

- Crew: 19 (Can be operated by a single person)
- **Passengers:** 48 or 96 depending on configuration
- Maximum Capacity: 67 or 115 accommodations
- **Emergency Capacity:** 230 people can fit aboard in an emergency, but the ship would be extremely cramped.

## Dimensions

- Length: 120 meters ( 393 feet)
- **Width (Fuselage):** 24 meters ( 78.72 feet)
- **Width (Overall):** 44 meters ( 144.32 feet)
- Height: 10 meters ( 32.8 feet)
- Decks: 2 (4 meters each)

## Speeds

The *Jōkyaku* is a nimble vessel.

- **Atmospheric:** 4,900 km/h, or 3.044.8 mph (Mach 4)
- **Combined Field System/Continuum Distortion Drive:**
  - **Minimum:** Resting motionless
  - **Sublight:** .3c (~89,937 kilometers per second) (~55,884 miles per second)
  - **Maximum Speed:** 12,500c (~1.43 ly/h)
- **Hyperspace Drive:** 394,470c (0.75 ly/m)

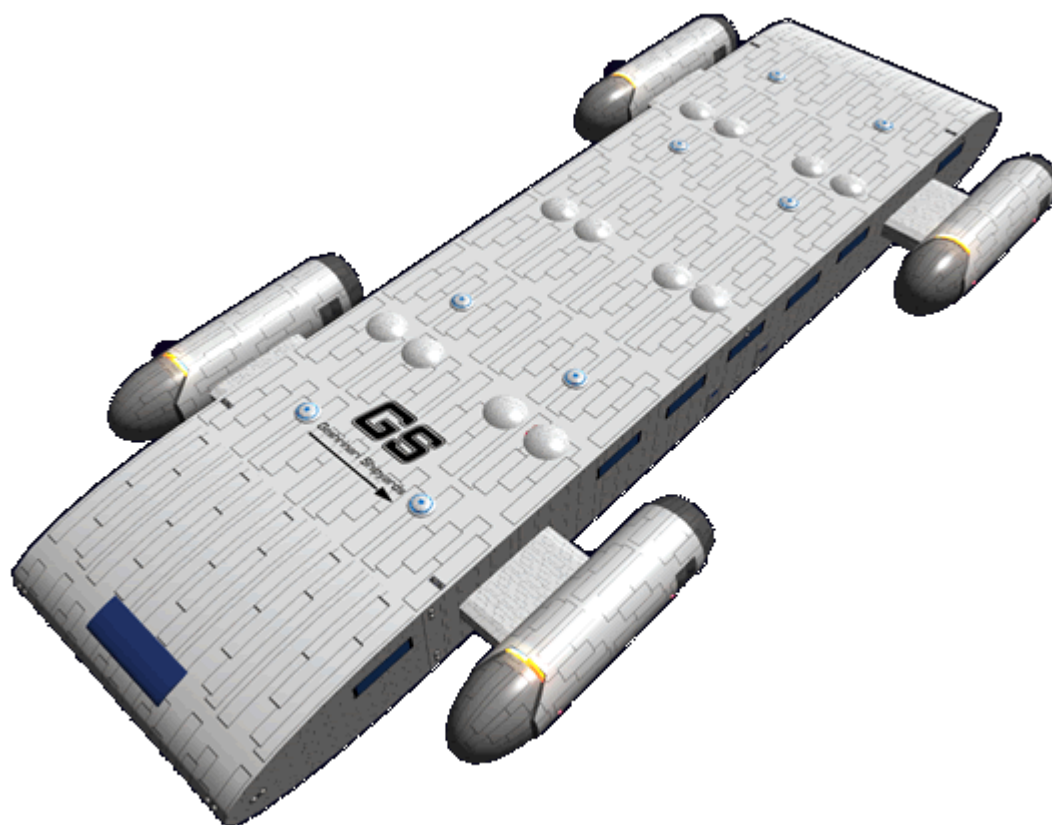
## Durability and Maintenance

- **Service Lifespan:** Estimated 20 years of constant use, possibly longer with refits.
- **Refit Cycle:** Frequent minor updates through refits once every four to five years.

## Damage Capacity

See [Damage Rating \(Version 3\)](#) for an explanation of the damage system.

- Hull: 20
- Shields: 20 (Threshold 2)



## Inside the Jōkyaku-Class



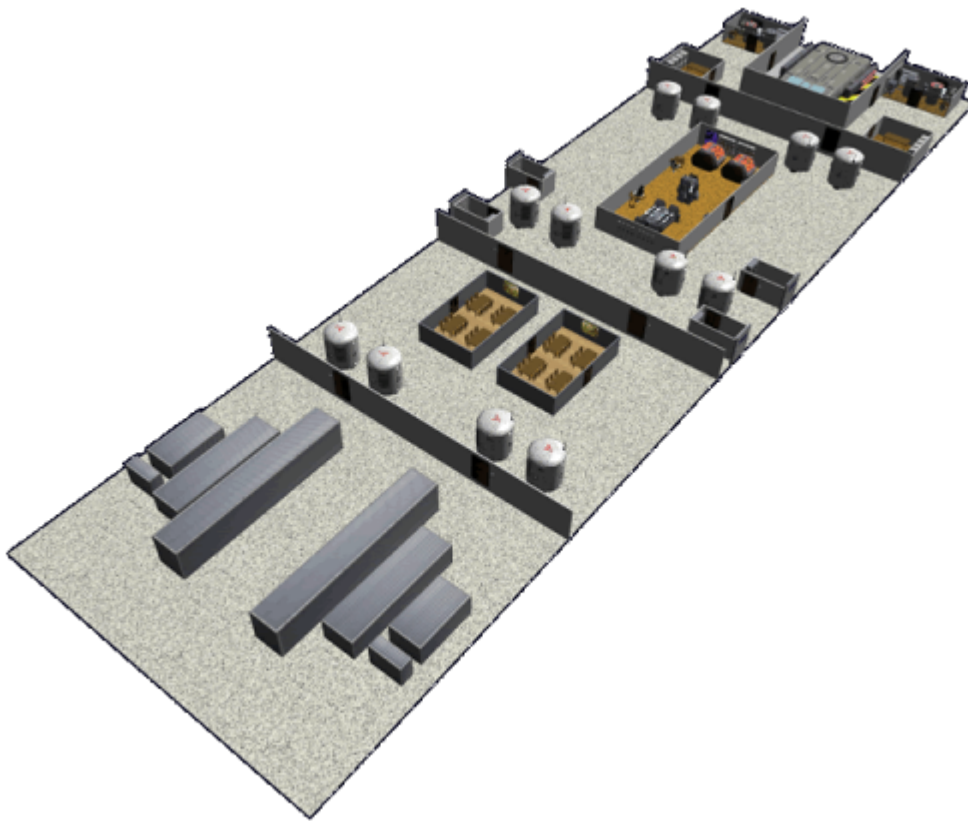
### Deck 1

Deck one is the upper deck, it is dedicated to passenger and crew amenities mostly. Crew quarters are located aft.



## Deck 2

Deck two is the utility deck, it features the engineering, life support, cargo holds etc. In the image you can see the escape pods.



## Cargo Hold

The [Geshrinari Cargo Bay](#) is located in the forward section of the deck. It has a floor space of 24 meters x 20 meters, and 3 meter height. This means it can carry up to 12 [SSCC-XL](#).

## Shuttle Bay

The [Geshrinari Standard Shuttle Bay](#) is located in the aft of the deck. It is designed to hold a Ge-T1 series shuttle.

## Bridge

The ship has a [Geshrinari Compact Bridge](#) located on Deck One.

## Computer Room

Located on deck one the [Geshrinari Standard Computer Room](#) is located amidships.

## Lounge

The ship has a large [Geshrinari Lounge](#) located in the bow of deck one.

## Airlocks (4)

The ship has four [Geshrinari Airlock](#) located on deck two amidships on either side.

## Engineering

[Geshrinari Standard Engineering](#) is located on deck two. It is in forward of the shuttle bay.

## Crew Quarters (8)

There are eight dual occupancy [Geshrinari Standard Crew Quarters](#) located in the stern. This provides accomondations for 16 crew. There are two [Geshrinari Common Baths](#) and [Geshrinari Common Toilets](#).

## Officers Quarters 2

The ship is fitted with two [Geshrinari Owner's Suite](#) that serve as officer quarters.

## Passenger Quarters 24

The ship has twenty-four quarters for passengers. They can be either [Geshrinari Passenger Quarters](#) which hold two people, or [Geshrinari Utility Quarters](#) which hold four. The owner can decide which configuration they want either at time of purchase or after a refit.

## VIP or Owners Suite

In the passenger section of the ship is a [Geshrinari Owner's Suite](#). It can either be used by the owner of the ship or a VIP passenger.

## Dining Room

The ship has a large 96 place [Geshrinari Dining Room](#).



## Galley

The ship has two [Geshrinari Galley](#)s located adjacent to either side of the lounge on deck one. They are used to supply food for the Dining room and the lounge for activities.

## Scullery

There is an over sized [Geshrinari Scullery](#) located next to the dining hall on deck one.

## Medical

There is a [Geshrinari Medical Bay](#) located on deck one. It is on the port side near the dining room.

## Laundry

There are two [Geshrinari Ship's Laundry](#) located on deck two near the shuttle bay. One on each side.

## Ship's Locker (4)

There are four [Geshrinari Ship's Locker](#) two on each deck.

## Life Support

For safety the ship is equipped with two [Geshrinari Life Support Room](#). They are located next to the shuttle bay on deck two.

## Recreation rooms

The ship has two [Geshrinari Shipyards Recreation Room](#) located on deck two. These can be configured for a variety of functions. As they are adjacent, the connecting wall can be removed for larger events.

## Systems

The *Jōkyaku* uses standard [Geshrinari Shipyards](#) components.

## Ge-L8-H3600 Armored Hull

The armored hull of the *Jōkyaku* is a [GE-T1-H3300 - Spacecraft \(DO\) Hull Construction](#).

## Ge-L8-E3600 Computer System

The *Jōkyaku* is fitted with a [Ge-Y2-E3300 - Hogosha Quantum Computer System](#) for all command and control functions. It is also equipped with a [Geshrinari Psionic Signal Controller](#).

## Ge-L8-E3601 Sensors

The *Jōkyaku* is equipped with a [Ge-Y2-E3301 - Standard Starship Sensors](#).

## Ge-L8-E3602 Communications

The *Jōkyaku* is equipped with a [Ge-Y2-E3302 - Communications Suite](#) for external communications. It is equipped with a [Ge-Y1-E3103 - Intercom System](#) for internal communications.

## Ge-L8-E3604 - Fire Control

The *Jōkyaku* is outfitted with a [Ge-Y2-E3306 - Fire Control System](#) to control whatever weaponry it is equipped with.

## Ge-L8-V3600 Life Support

The *Jōkyaku* is equipped with a [Ge-Y1-V3100 - Life Support System](#). This system provides full life support for all personnel and sections of the ship.

## Emergency

The *Jōkyaku* has all the standard Emergency systems available:

- [Ge-Y1-E3104 - Automatic Fire Suppression System](#)
- [Geshrinari Blast Shutters](#)
- 24 [Ge-X3300 - Type 33 Escape Pods](#)

## Ge-L8-G36xx

The *Jōkyaku* uses a [Geshrinari Aether Generator](#) for supplying primary power.

It has a pair of [Geshrinari Fusion Generator](#) which serve as emergency power. It carries enough fuel to operate the backup generator for 30 days.

## Ge-L8-S3601 Shielding

The *Jōkyaku* is equipped with a [Geshrinari Combined Field System](#) for protection.

## Ge-L8-P36xx Propulsion

The *Jōkyaku* is equipped with a variety of engines for specific tasks.

### Ge-L8-P3601 - FTL

For FTL travel the is equipped with a:

- 1 [Geshrinari Hyperspace Fold Drive](#)
- 4 [Geshrinari Continuum Distortion Drive](#) nacelles

### Ge-L8-P3602 - STL

The *Jōkyaku* is equipped with four [Geshrinari Turbo Plasma Drives](#) mounted pylons which allow them to be rotated up to 180 degrees.

### Ge-L8-P3603 - Atmospheric

For safe operation during landings and takeoff the *Jōkyaku* is equipped with a pair of [Geshrinari Graviton Engine](#). In an emergency the [Geshrinari Turbo Plasma Drives](#) can be used for VTOL operation.

### Ge-L8-P3604 - Docking and Station keeping

The *Jōkyaku* is equipped with twelve pairs of [Geshrinari Maneuvering Thrusters](#), which are used for attitude control, docking maneuvers, and station keeping.

## Ge-L8-M3600 - Landing Gear

The *Jōkyaku* is equipped with twelve landing pads. They are pneumatically driven and are used to raise or lower the ship, and level it.

## Ge-E1-W3400 - Dual Plasma Array

- 16 [Ge-E1-W3400 - Dual Plasma Array](#) mounted dorsally and ventrally

## Vehicles

The *Jōkyaku* comes with either

- 1 [Ge-T1-1A - Transatmospheric Shuttle](#) or [Ge-T1-2a - Hikiuma-Class Shuttle](#)

or

- 2 [Ge-T2-1C - "Kuma" Shuttle](#)

or

- 8 [Ge-T5-1a Cho-Class Shuttle](#)

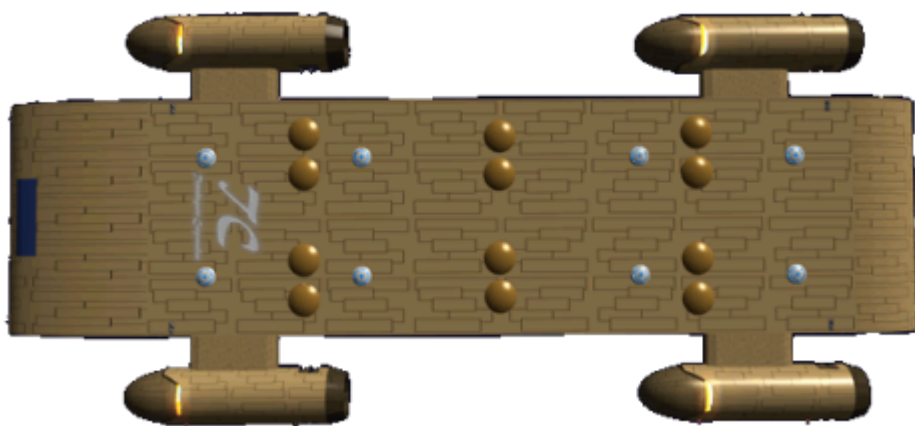
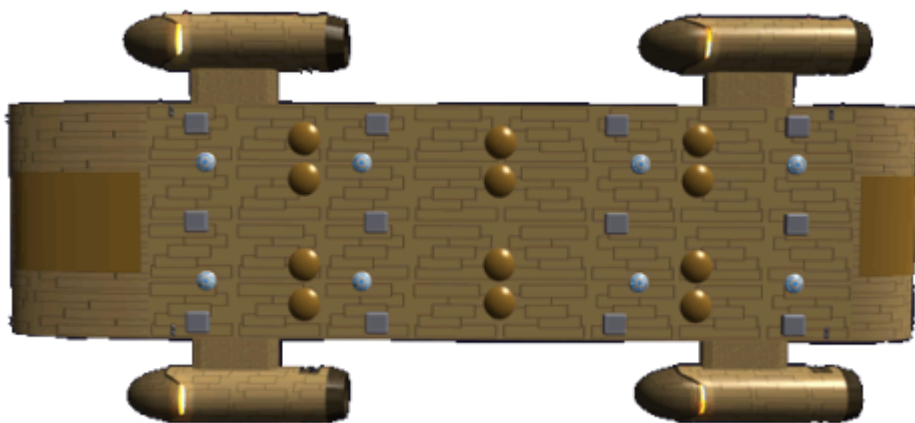
## Standard Equipment

A *Jōkyaku* typically has the following equipment

- 8 [EM-G17-1a Basic Tool Kit](#)
- 6 [EM-G17-2a Repair Kit](#)
- 4 [EM-G18-1a Ship Hull Patch Kit](#)
- 10 [EM-G19 - Survival Kit](#)
- 4 [EM-G16-1A/1B Medical Kit](#)
- 100 [EM-G16-2a First Aid Kit](#) 1 per stateroom.
- 120 [EM-G1 Emrys Dusk Suit](#) 30 per ship's locker.

## Other Views

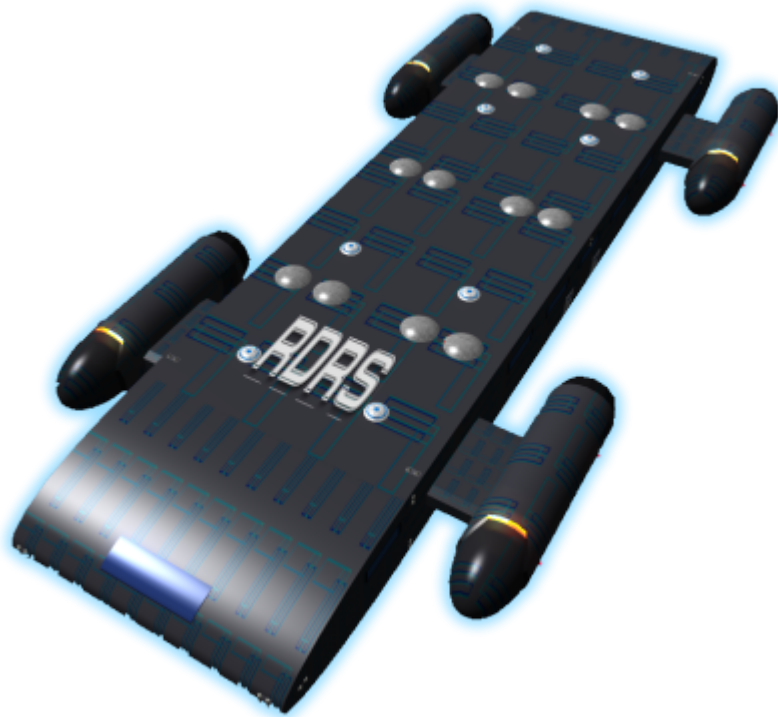
### Dorsal view

**Ventral view****Bow view****Stern view**



## Disaster Recovery Version

The redesigned Disaster Recovery version of this ship is the RDRS Ge-L8-1b - Jōkyaku-Class Passenger Class Ship pictured below:



This [Rapid Disaster Response Service](#) version of the ship is designed to move a balanced load of both passengers and cargo, without being designed to only transport one or the other.

## OOO Notes

Authored by [Nashoba](#) Nov 26, 2014 Artworkd Created by [Nashoba](#) . Submission Approved by [Wes](#) on Dec 16, 2014. [Forum Thread](#).

Products & Items Database	
Product Categories	starships

Products & Items Database	
Product Name	Jōkyaku-Class Passenger Ship
Nomenclature	Ge-L8-1A
Manufacturer	<a href="#">Geshrinari Shipyards</a>
Year Released	YE 36
Price (KS)	100,000.00 KS

From:

<https://wiki.stararmy.com/> - **STAR ARMY**

Permanent link:

[https://wiki.stararmy.com/doku.php?id=corp:geshrinari\\_shipyards:passenger\\_class\\_ship](https://wiki.stararmy.com/doku.php?id=corp:geshrinari_shipyards:passenger_class_ship)

Last update: **2024/02/25 13:38**

